

DIRECTIONS FOR USE

To control FIRE ANTS, use 12½ pounds minimum of this product broadcast per acre, or 1 lb per 3,500 sq ft. Also recommended for individual mound treatment. To control ANTS, JAPANESE BEETLE LARVAE, WHITE GRUBS, and WIRE WORMS, use 20 pounds of this product broadcast per acre to turf or soil and wash into soil lightly. Do not allow children or pets on treated lawn area until the insecticide has been washed off the grass into the soil and the area is completely dry.

WARNING:

May be fatal if swallowed. Do not inhale dust. Do not get on skin. In case of contact, wash immediately with soap and water. Avoid contamination of feed and foodstuffs.

This product is toxic to fish and wildlife. Birds feeding on treated area may be killed. Keep out of any body of water. Do not apply where runoff is likely to occur. Do not contaminate water by cleaning of equipment or disposal of wastes. Apply this product only as specified on this label.

Do not reuse empty container. Destroy it by perforation or crushing. Bury or discard in safe place.

NOTICE: AGRICHEMICAL PRODUCTS DIVISION, LTV AEROSPACE CORPORATION MAKES NO WARRANTY, EXPRESS OR IMPLIED, INCLUDING THE WARRANTIES OF MERCHANTABILITY AND/OR FITNESS FOR ANY PARTICULAR PURPOSE CONCERNING THIS PRODUCT except those which are contained on the Agri-Chemical Products Division, LTV Aerospace Corporation label attached to the product container.

FORMULATED FOR AND DISTRIBUTED BY
AGRI-CHEMICAL PRODUCTS DIVISION
 LTV AEROSPACE CORPORATION

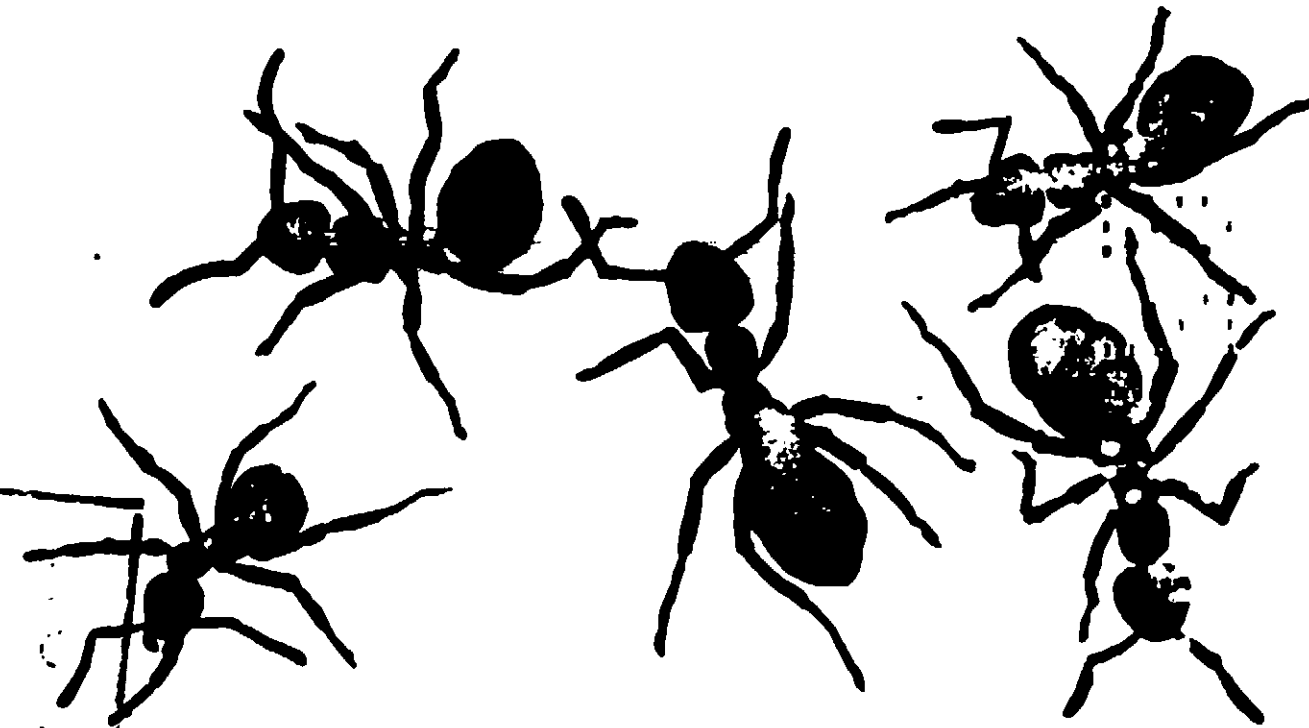
2345 W. MOCKINGBIRD LANE

DALLAS, TEXAS 75235

USDA Reg. No. 11287-4

Goamspray™ PRODUCTS

HEPTACHLOR 10
DEATH ON FIRE ANTS



11287-4
 THIS PRODUCT IS TO BE USED ONLY ON THE PESTS LISTED ON THE ATTACHED CONTAINER LABEL

CONTROLS: ANTS WIRE WORMS
 WHITE GRUBS EARWIGS

ACTIVE INGREDIENTS:

Heptachlor* 7.2%
 Related Compounds..... 2.8%

INERT INGREDIENTS 90.0%
 100.0%

*Heptachlorotetrahydro-4, 7-methanoindene

WARNING: KEEP OUT OF REACH OF CHILDREN.
 SEE BACK OF PANEL FOR ADDITIONAL WARNINGS

NET WEIGHT 1½ LBS.