



# LAWN SPOT WEEDER

CONTROLS MOST ROSETTE AND VINING WEEDS IN LAWNS

**ACTIVE INGREDIENTS:**

*Alkanolamine salts of (ethanol and isopropanol series) of 2,4-Dichlorophenoxyacetic acid .....	1.66%
**Dimethylamine salt of Dicamba (3,6-Dichloro-o-anisic acid) .....	.31%
Dimethylamine salts of related acids .....	.05%
<b>INERT INGREDIENTS</b> .....	<b>97.98%</b>
<b>Total</b> .....	<b>100.00%</b>

\*Equivalent to 1.0%, 2,4-Dichlorophenoxyacetic acid  
 \*\*Equivalent to 0.25%, 3,6-Dichloro-o-anisic acid  
 Contains Sodium Nitrite

## CAUTION

**KEEP OUT OF REACH OF CHILDREN**

See Side Panel for Additional CAUTIONS

EPA Reg. No. 10900-35-1386

EPA Est. No. 10900-OH-1

**Net Weight 1 lb. 3 oz. (19 ounces)**

FC- G-3-74 MANUFACTURED FOR PROD. 2194

**UNIVERSAL COOPERATIVES, INC.  
ALLIANCE, OHIO 44601**

## UNICO LAWN SPOT WEED KILLER

CONTROLS ALL THESE LAWN WEEDS

Black Medic	Filaree	Pennywort
Buckhorn	Fleabane	Pepperweed
Canada Thistle	Florida Pusley	Pigweed
Chickweed	Ground Ivy	Plantain
Clover	Heal-All	Poison Ivy
Cudweed	Henbit	Prickly Lettuce
Curly Dock	Knotweed	Purslane
Dandelion	Lambsquarter	Sheep sorrel
Dollarweed	Matchweed	Shepherds purse
English Daisy	Mustard	Yarrow

## DIRECTIONS

Use anytime weeds are conspicuous and temperatures are 50 degrees or higher.

**SHAKE WELL.** No stooping necessary. Stand upright, extend your arm so container is a comfortable 2-3 feet above ground. Invert can so top is aimed at center of weed. Place finger on end of actuator and press firmly. Only a light burst needed! Drenching does not increase effectiveness. **APPLY TO INDIVIDUAL WEEDS ONLY.**

Weeds start to twist in a few days, gradually decline. A full month may be required for complete fadeout. Repeat in three or four weeks if weeds persist.

It is not necessary (or desirable) to remove deadweeds. They will eventually disintegrate and disappear if left alone.

## CAUTION

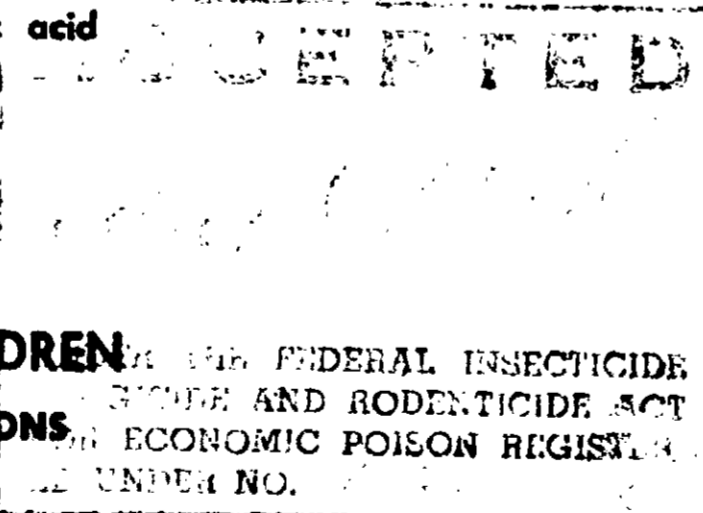
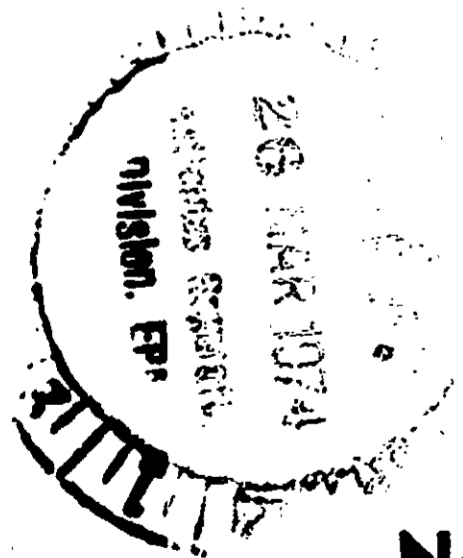
Avoid contact with eyes, skin or clothing. In case of contact, flush with plenty of water; for eyes get medical attention. Wash after each use.

Avoid drift or application to nearby garden plants, flowers or shrubs. Do not apply within dripline of desirable plants. Do not spray on bent grass, St. Augustine grass, clover or newly seeded areas, as they may be permanently injured. Do not contaminate water used for irrigational or domestic purposes. Do not store near fertilizers, seeds, insecticides or fungicides.

**WARNING:** Contents under pressure. Do not use near fire or open flame. Store in a cool place (not over 120° F), but protect from freezing. Never throw in fire or puncture this container.

## NOTICE

Use only for the purpose and in compliance with limitations, cautions and warnings stated on this label.



APR 12 1971 Red + Green  
 RECEIVED  
 EMPLOYEE

ACCEPTED  
 MAR-5-1971  
 UNDER THE FEDERAL INSECTICIDE  
 FUNGICIDE AND ROUPELUCIDE ACT  
 FOR ECONOMIC POISON REGISTERED  
 UNDER NO. 11275-2

52-2271-007 D 1 2  
 52-2271-007 J SEALED

PATENTS  
 ISSUED AND PENDING  
 BLANKS made under license from  
 EX CELL O CORPORATION by  
 INTERNATIONAL PAPER  
 SINGLE SERVICE DIV., NEW YORK, N. Y. 10017  
 Patent No. 26,305

# LITHATE<sup>®</sup> 2,4-D NON-VOLATILE BROADLEAF WEED KILLER

Net Weight (Anhydrous) 1.05 Pounds Min.

THIS DOSAGE-UNIT PACKAGE  
 PROVIDES EXACTLY 1 LB. 2,4-D  
 ACID EQUIVALENT

XLO-PAK  
 TO OPEN

TO OPEN OPEN BOTH GABLES TO OPEN

# LITHATE<sup>®</sup> 2,4-D NON-VOLATILE BROADLEAF WEED KILLER

## CONTROL THESE WEEDS

- Bindweed \* Burdock \* Cocklebur \* Dandelion  
 Kochia \* Lambsquarters \* Marsh Elder \* Mustard  
 Pennycress \* Peppergrass \* Pigweed \* Plantain  
 Puncture Vine \* Ragweed \* Shepherd's Purse  
 Sunflower \* Thistle \* Wild Carrot \* Wild Hemp

### CAUTION

**KEEP OUT OF REACH OF CHILDREN** Harmful if swallowed. Avoid inhaling dust. Avoid contact with skin, eyes or clothing. In case of eye contact flush with water. Avoid contamination of irrigation ditches and water used for domestic purposes, either by concentrated powder or by sprays.

**Note:** This Dosage-Unit when dissolved in several gallons of water for spraying, presents no appreciable handling hazards.

### WARNING

Exercise care when applying spray and avoid spray mist particles reaching or drifting to susceptible plants such as Tomatoes, Cotton, Grapes, Tobacco, Beans, Squash or Ornamentals. Use coarse sprays near susceptible plants to minimize drift. Do not use 2,4-D spray equipment for other purposes without first thoroughly cleaning it. Do not store near foodstuffs, seeds, fertilizers, insecticides or fungicides. Prevent drift of active powder from opened packages, as when making spray batches or discarding empty packages.

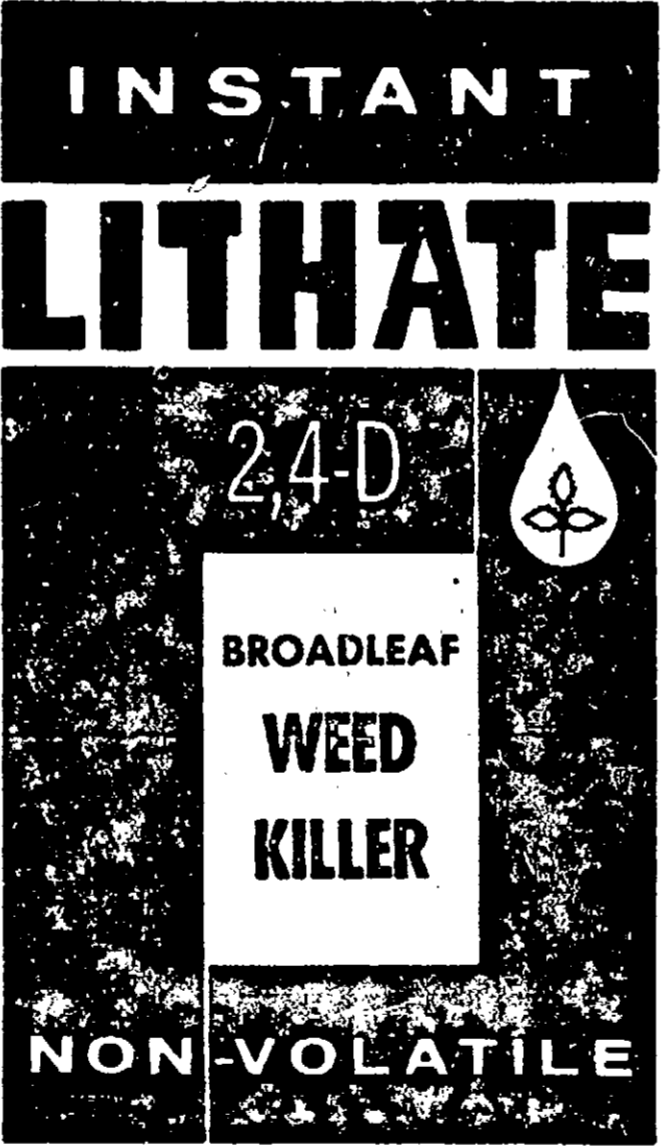
### NOTICE

Since the handling, use and conditions of use of this material are not under their direct supervision or control neither Guth Chemical Company nor the seller makes any Warranty other than that the kind of Active Ingredient and net quantity of Acid Equivalent are as stated on the label.

"Lithate<sup>®</sup> 2,4-D is an instantly dissolving concentrated non volatile metal salt

**This Carton not to be reused. Destroy Empties.**

Made in U.S.A. Printed in U.S.A.



**CAUTION**  
**KEEP OUT OF REACH OF CHILDREN**  
 See adjoining panel for detailed directions and  
 USDA REGISTRATION NUMBER 11275-2  
 Label Revision Dated 7, January 1971

### ANHYDROUS COMPOSITION

Active Ingredient	LITHIUM 2,4-DICHLOROPHOXYACETATE	95%
Inert Ingredients		5%

GUTH CORPORATION  
 Box 302, Naperville, Ill. 60540 U.S.A.

LITHATE 2,4-D IS COMPLETELY NON-VOLATILE. Regardless of changing wind direction or weather conditions after application, Lithate 2,4-D treated weeds and crop plants cannot give off injurious volatile fumes to carry in the air and damage surrounding crops and plants.

**ALWAYS READ THE COMPLETE LABEL ON ANY PEST CONTROL CHEMICAL PACKAGE.** Handle, store and use in accordance with directions. Do not contaminate water supplies. Destroy empty containers in accordance with laws and local regulations.

### GENERAL DIRECTIONS

Confine the application of all pest control chemicals to the area being treated. Uncaring or careless application not only wastes chemical but can also cause serious economic damage to surrounding crops and plants.

Weed control chemicals can escape from the area being treated in the form of a "bottle" drift. There are two kinds of drift both of which should be guarded against. There is physical particle drift and there is injurious volatile fume drift.

Injurious volatile fume drift takes place from many chemicals as long as they are exposed and remain active. Lithate 2,4-D is completely non-volatile and therefore is completely free from volatile fume drift.

The person making the application of a weed control chemical is responsible for physical particle drift. Physical particle drift results when the wind catches and carries the particles being applied. These may be carried down wind to damage easily injured crops and plants.

There are several things that influence physical particle drift. The higher the wind, the higher the spray nozzles are off the ground, and the finer the spray particles, the easier the wind can pick up physical particles of the spray and the farther they will be carried.

Do not spray when easily injured crops and plants are directly down wind. Use coarse sprays. Coarse sprays that give good weed coverage can be obtained by using special weed chemical nozzles that permit 25 to 30 gallons of water spray solution to be applied per acre broadcast basis. Spray pressures 25 p.s.i. gauge or less also result in coarser sprays and reduce the amount of fine spray mist particles.

**DOSAGE-UNIT PACKAGE.** Lithate 2,4-D is a dry chemical that is dissolved in water and used as a spray. It is packaged by the Dosage Unit for convenience. Each Dosage Unit provides exactly 1 lb. of 2,4-D acid equivalent. For simplicity, ease and accuracy, plan spray batches to use whole Dosage Units.

**USE OF SPREADER STICKERS, WETTING AGENTS AND OTHER ADDITIVES.** Lithate 2,4-D contains no Spreader Sticker, Wetting Agent or similar additives. The Rates and Times of Application suggested in the Directions following are for straight Lithate 2,4-D and may not apply when other materials are added to this spray.

**BE SURE YOUR EQUIPMENT IS ALL WORKING PROPERLY.** See that the pressure is right and that all nozzles are throwing the correct pattern. Know your speed and how much water spray solution you are applying per acre. (Directions continued on adjoining panel)

**This Carton not to be reused. Destroy Empties.**

TRADE MARK - GUTH CORPORATION

(Directions continued from adjoining panel.)

### RATE AND TIME OF APPLICATION

**CROPLAND (2,4-D RESISTANT CROPS AND CROP VARIETIES)** The rates and times of application suggested here are for the more common or normal crops, crop varieties and growing conditions. Complex breeding sometimes creates a new or different variety that has changed tolerance for a given weed control chemical. Some of these different varieties may be less tolerant than normal. Some may have improved tolerance and these varieties can take advantage of a higher than normal rate of Lithate 2,4-D to get even better broadleaf weed control. Be sure of the rate your particular variety will tolerate before treating with Lithate 2,4-D. **SPRAY BARLEY, OATS, RYE OR WHEAT** from the full tiller to the boot stage or from the dough stage to ripening grain. Do not spray in the seedling stage or from the boot stage to the dough stage. Use 1 Dosage-Unit of Lithate 2,4-D for 2 to 4 acres (this provides 1/2 to 1/4 lb. of 2,4-D chemical acid equivalent per acre). Do not forage or graze treated grain fields within 2 weeks after spraying. Do not feed treated straw to live stock.

**SPRAY RICE** from the tiller to the boot stage. For flooded rice use 1 Dosage-Unit of Lithate 2,4-D for 1/4 to 1 1/4 acres (this provides 1 1/2 to 1/2 lb. of 2,4-D chemical acid equivalent per acre). For dryland rice use 1 Dosage-Unit of Lithate 2,4-D for 1 to 2 acres (this provides 1 to 1/2 lb. of 2,4-D chemical acid equivalent per acre).

**SPRAY FIELD CORN** from 4 inches in height to tasseling. Do not spray from tasseling to the dough stage. Over the top application may be made when the corn is 4 to 10 inches in height (standing). Use directed sprays (drop nozzles) after corn is 10 inches in height. Use 1 Dosage-Unit of Lithate 2,4-D broadcast basis, for 2 to 4 acres (this provides 1/2 to 1/4 lb. of 2,4-D chemical acid equivalent per acre).

**SPRAY GRAIN SORGHUM (MILO MAIZE)** from 4 inches in height to flowering. Do not spray from flowering through the early dough stage. Over the top spraying may be done when the sorghum is 4 to 10 inches in height (standing). Use directed sprays (drop nozzles) after sorghum is 10 inches in height. Use 1 Dosage-Unit of Lithate 2,4-D for 2 to 4 acres, broadcast basis (this provides 1/2 to 1/4 lb. of 2,4-D chemical acid equivalent per acre).

**2,4-D RESISTANT GRASS PASTURES and NON-CROPLAND** such as Fence Rows, Roadways, and Around Buildings with Mixed Perennial and Annual Weeds. Spray when weeds are growing actively. Use 1 to 3 Dosage-Units per acre (1 to 3 lb. 2,4-D chemical acid equivalent per acre). Do not graze to dairy animals within 7 days after spraying. Do not apply to newly seeded pastures. Do not use on pastures containing susceptible grasses such as Bent grass and St. Augustine grass.

**HAND SPRAYING AND SMALL SPOT SPRAYING.** First determine the amount of water your sprayer applies per 1000 sq. ft. One heaping tablespoon of Lithate 2,4-D in this amount of water and applied to 1000 sq. ft. is equivalent to 1 Dosage-Unit of Lithate 2,4-D per acre. This rate is suitable for in the Spring when weeds are young and growing actively. Later in the season or with hard to kill broadleaf weeds, double and even triple this rate.

(2)