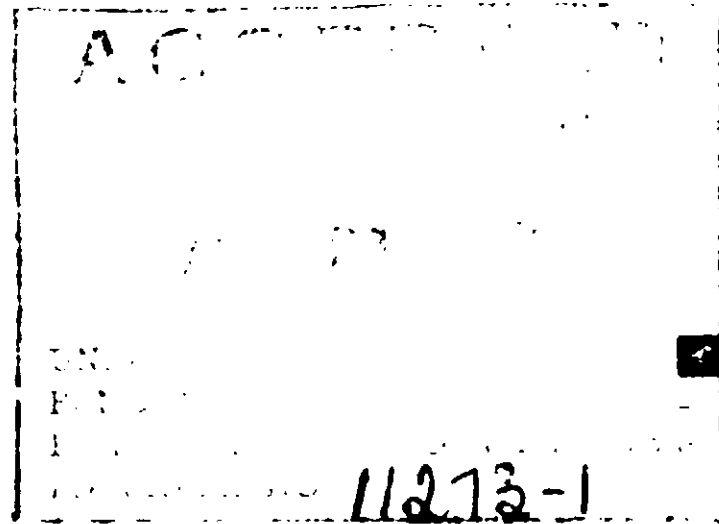


Net Weight: \_\_\_\_\_



# THIOLUX

MICRONIZED WETTABLE SULFUR

*Read This Label Carefully*

<b>ACTIVE INGREDIENT:</b>	<b>BY WT.</b>
Sulfur . . . . .	80%
<b>INERT INGREDIENTS . . . . .</b>	<b>20%</b>
	<hr/>
<b>TOTAL</b>	<b>100%</b>

EPA Reg. No. 11273-1

**CAUTION: KEEP OUT OF REACH OF CHILDREN**

Dispose of empty bag by burning. (KEEP OUT OF SMOKE)

**NOTICE:** Seller warrants that the product conforms to its chemical description and is reasonably fit for the purpose stated on the label when used in accordance with directions under normal conditions of use. The manufacturer

ACTIVE INGREDIENT:		BY WT.
Sulfur . . . . .		80%
INERT INGREDIENTS . . . . .		20%
	TOTAL	<u>100%</u>

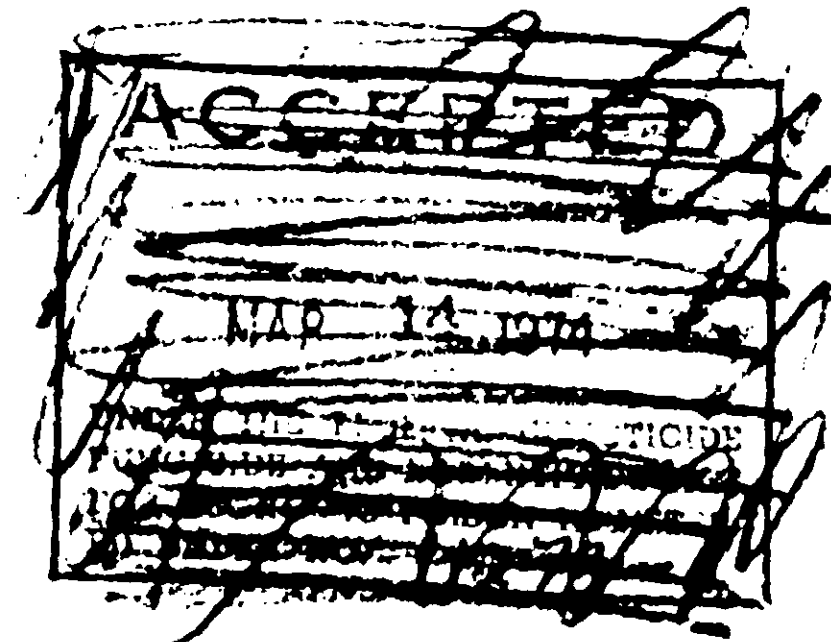
EPA Reg. No. 11273-1

**CAUTION: KEEP OUT OF REACH OF CHILDREN**

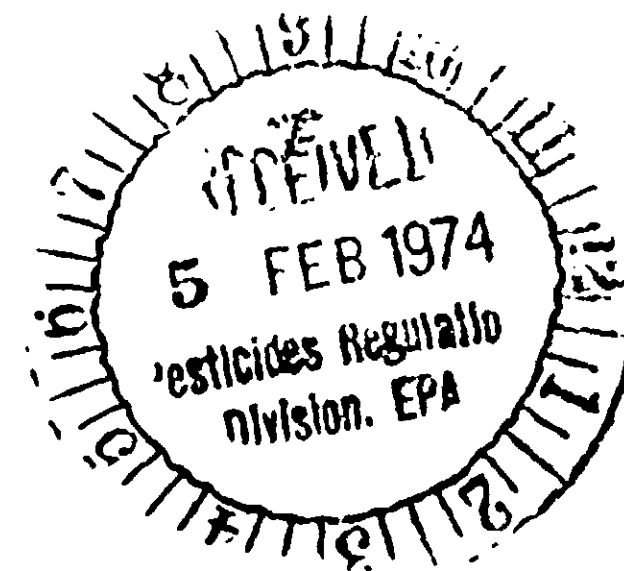
Dispose of empty bag by burning. (KEEP OUT OF SMOKE)

**NOTICE:** Seller warrants that the product conforms to its chemical description and is reasonably fit for the purpose stated on the label when used in accordance with directions under normal conditions of use. The manufacturer makes no other warranties of any kind, express or implied. Buyer assumes all risks of use, storage or handling of this material not in strict accordance with directions given herewith.

Manufactured by



**SANDOZ-WANDER, INC.**  
 CROP PROTECTION DEPARTMENT  
 HOMESTEAD, FLORIDA 33030



REC'D MAR 21 1974

### DIRECTIONS FOR DILUTION

**DILUTE APPLICATION:** Ground Application: Apply specified rate in 20 to 60 gallons of water per acre. Orchard Application: Apply specified rate in 100 to 800 gallons of water per acre.

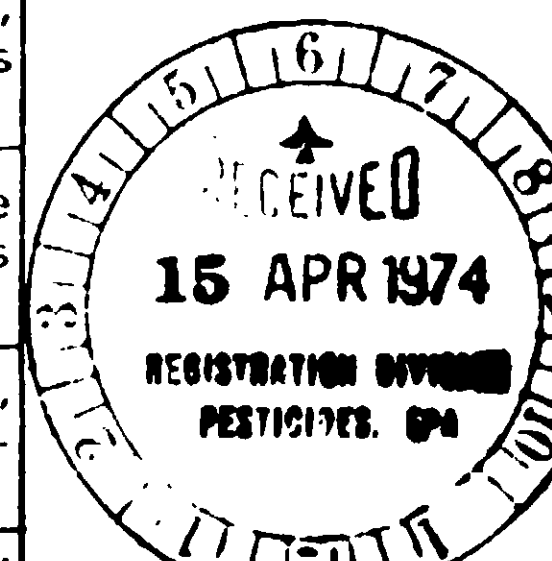
**CONCENTRATE APPLICATION:** Ground Application: Apply specified rate in not less than 5 gallons of water per acre. Orchard Application: Apply specified rate in 20 to 100 gallons of water per acre. Special concentrate equipment is necessary for these areas.

**AIR APPLICATION:** Apply specified rate in 5 to 20 gallons of water per acre. Orchard rates should not be applied in less than 10 gallons of water per acre.

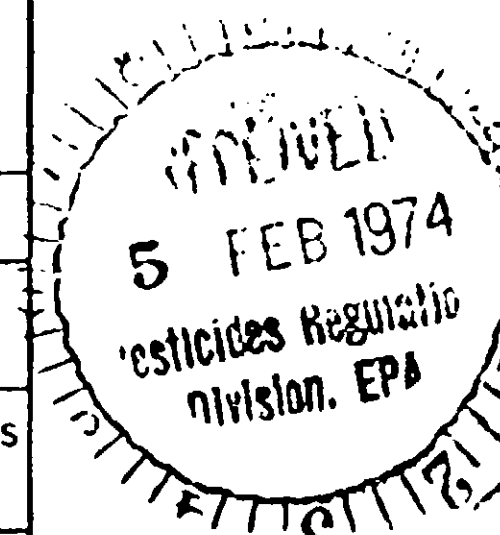
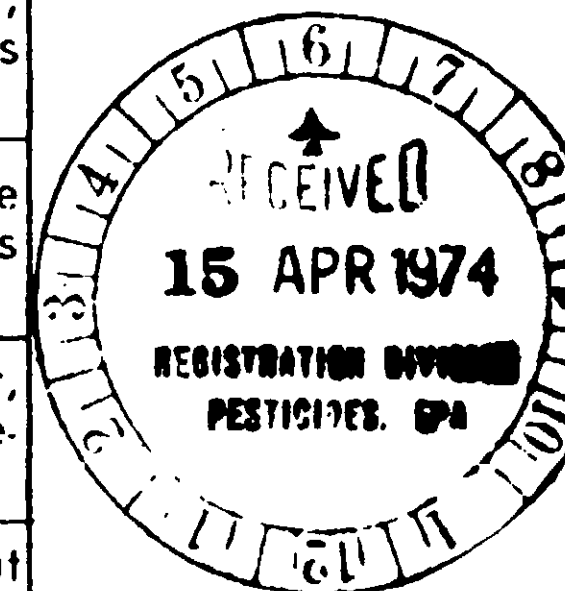
### DIRECTIONS FOR USE

Pour needed amount into spray tank under agitation. If necessary, add a few drops of oil to avoid foaming.

CROP TO BE PROTECTED	PROTECTION AGAINST	APPLICATION	
		Rate in Lbs/A	Frequency
Almonds, Cherries, Plums, Prunes	Brown Rot, Leaf Spot, Powdery Mildew, Silver Mite, Flat Mite, Red Spider	10-30	At bloom or early petal fall and repeat at 10-14 day intervals as necessary or after period of wet weather.
Apples, Pears (except D'anjou)	Powdery Mildew, Scab, Blister Mite, Red Spider	10-30	At pre-bloom and petal fall and apply with cover sprays throughout the season.
Peaches, Nectarines	Brown Rot, Powdery Mildew, Silver Mite, Red Spider	10-30	At bloom or early petal fall and repeat at 10 to 14 day intervals as necessary or after period of wet weather.
Citrus	Flat Mite, Silver Mite, Red Spider	8-20	Apply in any spray -- NOT CONTAINING OIL -- or following oil by 14 days.
Walnuts	European Red Mite, Pacific Mite, Almond Mite, Two-spotted Mite, Red Spider	10-20	Apply with mite sprays to increase effectiveness. CAUTION: Do not apply unless variety is known to be tolerant to sulfur.
Grapes	Powdery Mildew, Bud Mite, Blister Mite, Red Spider	2-5	In late dormancy, with cutworm spray, early shoot period, and every 14 days through season.
Blackberry (Rubis spp.)	Powdery Mildew	6-15	When new shoots are 6" long, and before blossoms open. Repeat at 10 day intervals as necessary.
Raspberry (Rubis spp.)	Powdery Mildew (Sphaerotheca humuli)	6-15	Each week starting at first bloom color, until fruit is set, then repeat as weather requires.
Strawberries	Powdery Mildew, Flat Mite, Red Spider	6-15	At first bloom color, repeat at 10 day intervals as necessary.



Apples, Pears (except D'anjou)	Powdery Mildew, Scab, Blister Mite, Red Spider	10-30	At pre-bloom and petal fall and apply with cover sprays throughout the season.
Peaches, Nectarines	Brown Rot, Powdery Mildew, Silver Mite, Red Spider	10-30	At bloom or early petal fall and repeat at 10 to 14 day intervals as necessary or after period of wet weather.
Citrus	Flat Mite, Silver Mite, Red Spider	8-20	Apply in any spray -- NOT CONTAINING OIL -- or following oil by 14 days.
Walnuts	European Red Mite, Pacific Mite, Almond Mite, Two-spotted Mite, Red Spider	10-20	Apply with mite sprays to increase effectiveness. CAUTION: Do not apply unless variety is known to be tolerant to sulfur.
Grapes	Powdery Mildew, Bud Mite, Blister Mite, Red Spider	2-5	In late dormancy, with cutworm spray, early shoot period, and every 14 days through season.
Blackberry (Rubis spp.)	Powdery Mildew	6-15	When new shoots are 6" long, and before blossoms open. Repeat at 10 day intervals as necessary.
Raspberry (Rubis spp.)	Powdery Mildew (Sphaerotheca humuli)	6-15	Each week starting at first bloom color, until fruit is set, then repeat as weather requires.
Strawberries	Powdery Mildew, Red Spider	5-10	Early leaf stage and repeat with or without pesticides. For powdery mildew, at first signs of disease and repeat as needed.
Beans, Peas, Broccoli, Brussels Sprouts, Cabbage, Cauliflower, Collard, Kale, Peppers, Potatoes	Powdery Mildew, Septoria Leaf Spot, Red Spider	3-5	Early leaf stage and repeat every 10-14 days, with or without pesticides immediately after rain.
Tomatoes	Russet Mite	3-5	Thorough coverage required.
Cotton, Seed Alfalfa	Red Spider	3-5	Apply as needed.
Peanuts	Powdery Mildew, Leaf Spot, Red Spider	3-5	Start at early leaf stage and repeat as necessary usually 10 to 24 days.
Sugar Beets	Red Spider	3-5	Apply as needed with or without pesticides.



**CAUTION:** Do not use on sulfur sensitive plants. Sulfur may burn foliage when temperature is excessively high. Do not apply if temperatures during or within three days after application are expected to exceed 90° F. in the area to be treated. Do not apply with or following an oil application for 14 days. Do not apply oil for 14 days following treatment.

REC'D MAR 21 1974