



**DO IT YOURSELF  
HOME PEST  
CONTROL**

**KILLS**

**CRICKETS, ROACHES,  
EARWIGS,  
SPIDERS, FLEAS,  
TICKS, SILVERFISH,  
ANTS, FLIES,  
CARPET BEETLES**

JUL 30 1986

10902-2

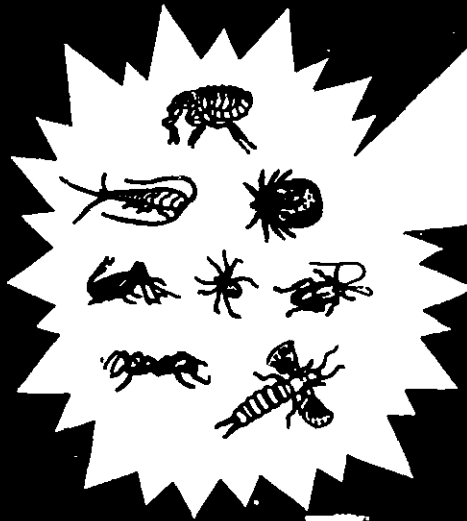
**ARIZONA'S  
BEST**

**DO IT YOURSELF  
HOME PEST  
CONTROL**

**FORMULA FOR PROFESSIONAL  
INDOOR INSECT PESTS**

**KILLS**

**CRICKETS, ROACHES, SPIDERS, SILVERFISH,  
ANTS, FLEAS, EARWIGS, BROWN DOG TICKS**



**NOTICE: READ ENTIRE LABEL CAREFULLY. USE STRICTLY IN ACCORDANCE WITH CAUTIONS AND DIRECTIONS. BUYER ASSUMES ALL RESPONSIBILITIES FOR SAFETY AND USE NOT IN ACCORDANCE WITH CAUTIONS AND DIRECTIONS.**

**ALWAYS SHAKE OR MIX WELL BEFORE USING.**

**MANUFACTURED BY  
L&G 2222 N. 27th Ave.  
SUNPLEX Phoenix, Az. 85009**

EPA REG. NO. 10902-2

EPA EST NO. 10902-AZ-1

**DAL**

#### PRECAUTIONARY STATEMENTS

##### HAZARDS TO HUMANS AND DOMESTIC ANIMALS

**CAUTION:** Avoid contact with eyes, skin and clothing. May be harmful if swallowed. Avoid breathing vapors or spray mist. Keep away from food, feedstuffs, and domestic water supplies. Wash thoroughly after handling.

**ENVIRONMENTAL HAZARDS:** This product is highly toxic to bees exposed to direct treatment or residues on plants. This product is toxic to fish, birds, and other wildlife. Keep out of lakes, streams, ponds, tidal marshes, and estuaries. Do not apply where runoff is likely to occur. Do not apply when weather conditions favor drift from areas treated. Do not contaminate water by cleaning of equipment or disposal of wastes. Do not use as a space spray. Do not spray desirable plants. Thoroughly wash dishes and food handling utensils with soap and water if they become contaminated by application of this product. Do not allow children or pets to contact treated surfaces until spray has dried. Remove pots and cover fish bowls (tanks) before spraying. Do not apply sprays of this product in conduits, meter housings, junction and switch boxes or other electrical equipment because of possible shock hazard. Do not use in edible products areas of food processing plants, restaurants, or other areas where food is commercially prepared.

##### STATEMENT OF PRACTICAL TREATMENT

**IF SWALLOWED:** Call a physician or poison control center. Drink 1 or 2 glasses of water and induce vomiting by touching back of throat with finger. Do not induce vomiting or give anything by mouth to an unconscious person. **IF ON SKIN:** In case of contact, remove contaminated clothing and immediately wash skin with plenty of soap and water. **IF IN EYES:** Flush eyes with plenty of water.

**NOTE TO PHYSICIAN:** Chlorpyrifos is a cholinesterase inhibitor. Treat symptomatically. Atropine only by injection is an antidote.

In case of an emergency endangering life or property involving this product, call collect 517-638-4400.

#### DIRECTIONS FOR USE

It is a violation of Federal law to use this product in a manner inconsistent with its labeling.  
**READ ENTIRE LABEL. USE STRICTLY IN ACCORDANCE WITH LABEL PRECAUTIONARY STATEMENTS AND DIRECTIONS.**

**HOW TO USE:** Hold container upright and spray infested surfaces until wet. Repeat treatment as needed. **NOTE:** After each use, clear nozzle above liquid level of container to prevent leakage and siphoning from nozzle.

**FOR CONTROL OF CRICKETS, ROACHES, ANTS, CLOVER MITES, FIREBRATS, SILVERFISH, AND SPIDERS (Indoors):** Thoroughly apply under and behind sinks, stoves, refrigerators, cabinets, around plumbing, along and behind baseboards and other areas where insects hide including dark corners of rooms, cabinets, cracks and crevices in walls and floors. For ants apply to ant trails, also around doors and windows and wherever these pests may find entrance.

**FOR CONTROL OF BROWN DOG TICKS AND FLEAS:** Thoroughly apply as a spray for spot treatment to infested areas such as pet beds and resting quarters; nearby cracks and crevices; along and behind baseboards, window and door frames and localized areas of floor and floor covering where these pests may be present. Old bedding of pets should be removed and replaced with clean, fresh bedding after treatment of pet area. **DO NOT TREAT PETS** with this product. To control the source of flea or tick infestation, pets habituating the treated premises should be treated with a product registered for application to animals.

**FOR CONTROL OF CARPET BEETLES (Indoors) —** Thoroughly apply as a spot treatment along baseboards and edges of carpeting, under carpeting, rugs and furniture, in closets and on shelving, and wherever else these insects are seen or suspected.

**FOR CONTROL OF FLEAS, MOSQUITOES (Outdoors) —** Use only as an aid in reducing annoyance from these insects. Spray outside surfaces of screens, doors, window frames or wherever these insects may enter the room. Also treat light fixtures on porches, in garages, and other places where these insects might congregate. Repeat as necessary.

**FOR CONTROL OF CRICKETS, ANTS, BROWN DOG TICKS, FLEAS, AND EARWIGS (Outdoors) —** Spray infested area thoroughly. For ants, thoroughly wet hills and runways. Repeat applications as infestation warrant and as reinfestation occurs.

**DISPOSAL:** Do not reuse empty container. Wrap container and put in trash collection.

\*Duron is a registered trademark of Dow Chemical Company, U.S. Patent No. 3,244,508.

It is a violation of Federal law to use this product in a manner inconsistent with its labeling.

READ ENTIRE LABEL. USE STRICTLY IN ACCORDANCE WITH LABEL PRECAUTIONARY STATEMENTS AND DIRECTIONS.

**HOW TO USE:** This product is ready to use and should be applied with either a hose end or tank sprayer. Shake well before filling your sprayer, and then apply by drenching or spot treating the infested areas. Repeat treatment as necessary. After use - Tighten cap on gallon jug and store in cool dark place until needed again.

**ORNAMENTALS AND TREES:** For best control of aphids, leafhoppers, mites, caterpillars, grasshoppers, whiteflies, red Spider, katydids, citrus mealy bugs, and other minor insects apply a course spray to thoroughly wet both upper and lower leaf surfaces and to infested limb and trunk areas. Attempt to penetrate dense foliage but avoid overspraying to the point of excessive runoff. Environmental factors significantly affect phytotoxicity. This product has been tested on numerous ornamental plants without causing serious phytotoxicity. However, because of the numerous varieties grown, it is recommended that a small group of plants be treated under the anticipated growing conditions and observed for phytotoxic symptoms for a least 7 days, before a large number of plants are treated. Do not treat bearing fruit and nut trees. Do not use on azalea's, roses, camellias, poinsettias, or variegated ivy because of possible injury to these plants.

**LAWNS AND OTHER OUTDOOR AREAS:** For best control of ants, cutworms, crickets, earwigs, flea's, ticks, sowbugs, mites, grasshoppers, mosquitoes, army worms, June beetles, sod webworms, chinch bugs, chiggers, and other turf and outdoor insects apply as course, low pressure drench spray using either a hose end or tank sprayer. For best results, lawns and other outdoor areas should be moist at the time of treatment. Thoroughly water immediately after treatment to wash the insecticide into the turf and soil. Spray when pests first appear and repeat when needed.

**OUTSIDE SURFACES, HOME AND BUILDING FOUNDATIONS:** For best control of ants, cockroaches, crickets, earwigs, flea's, hornets, wasps, spiders, sowbugs, scorpions, ticks, and mosquitoes apply as a residual drench spray to outside surfaces of buildings including porches, window frames, eaves, patio's, garages, refuse dumps, and other areas where pests congregate or have been seen. To help prevent infestations of buildings treat a band of soil 6 to 10 feet wide around and adjacent to buildings. Also the building foundation to a height of 2 to 3 feet, where pests are active and may find entrance. Repeat treatment as needed to maintain effectiveness. NOTE: For scorpions treat or remove accumulations of lumber, firewood, and other materials which serve as insect harborage sites.