

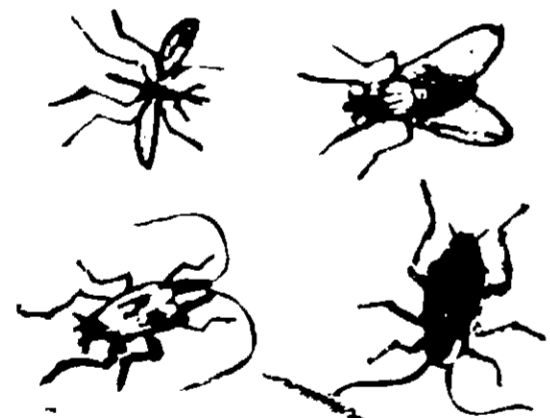
5-19

**KILLS Flies - Roaches
Ants - Mosquitoes**

Formula No. 19-37
Net Weight 14 oz.

Chem-Cide Insect Spray

**For Control Of Insects,
Residential & Industrial
And Pests On
Ornamental Plants**



EPA REG. NO. 10882-10
EPA EST. NO. 5502-NJ-1

WARNING

Keep Out Of The Reach Of Children.
Contents Under Pressure.
See Other Cautions On Back Panel.

DIRECTIONS FOR USE

SHAKE BEFORE USE. Point valve away from face and press button. Hold can at least 3 feet from surfaces which may stain and 18 inches from plants.

FOR CONTROL OF RESIDENTIAL AND INDUSTRIAL INSECTS

Flies, Mosquitoes, Gnats and Small Flying Moths: Direct spray at insects using short bursts (1 or 2 seconds) or treat unoccupied areas as follows: Close doors and windows. With a sweeping motion, direct spray upwards to all parts of the room (8 to 10 seconds per 1000 cubic feet). Keep room closed for 15 minutes. Do not remain in treated area. Ventilate area after treatment is completed.

Wasps and Hornets: Direct spray at these insects using short bursts. Spray thoroughly into nests, hiding and breeding places when insects have settled at night.

Roaches, Sowbugs, Centipedes, Crickets, Earwigs, Grain Mites, and Spiders: Spray thoroughly at hiding places such as cracks, crevices, moist areas, openings around pipes and sinks, under refrigerators, baseboards and storage areas. Spray directly on insects where possible. Repeat as necessary.

Ants: Spray trails, nests and points of entry. Spray on ants where possible. Repeat as necessary.

FOR CONTROL OF PESTS ON ORNAMENTAL PLANTS

For control of aphids, two-spotted spider mites and adult white flies on ornamental house and greenhouse plants (African violet, aralia, Christmas cherry, chrysanthemum, cineraria, daffodil, fuchsia, geranium, lantana, Nointhe bella, palm, petunia, rose and snapdragon) and on outdoor plants (azalea, chrysanthemum, euonymus, geranium, old-fashioned rose, snapdragon and zinnia). Spray plants with a slow sweeping motion so that mist drifts into plants. Do not spray so that upper and lower leaf surfaces are contacted. Use caution on new growth and tender foliage. Repeat as necessary. When controlling ants, spray when ants still.

For control of these pests as well as tent caterpillars, caterpillars, cypress webworm on ornamental trees and shrubs, and on trees, spray bearing fruit trees.

CONTAINS A COMBINATION OF TWO SYNTHETIC PYRETHROID COMPOUNDS

ACTIVE INGREDIENTS:

Permethrin	10%	2-(2,6-dimethyl-4-pyridyl)-1-methyl-3-isopropyl-4-methyl-5-pyridyl-1-propanol	20%
Pyrethrin	10%	2-(2,6-dimethyl-4-pyridyl)-1-methyl-3-isopropyl-4-methyl-5-pyridyl-1-propanol	20%
Pyrethrin	10%	2-(2,6-dimethyl-4-pyridyl)-1-methyl-3-isopropyl-4-methyl-5-pyridyl-1-propanol	20%
Pyrethrin	10%	2-(2,6-dimethyl-4-pyridyl)-1-methyl-3-isopropyl-4-methyl-5-pyridyl-1-propanol	20%
Pyrethrin	10%	2-(2,6-dimethyl-4-pyridyl)-1-methyl-3-isopropyl-4-methyl-5-pyridyl-1-propanol	20%

INERT INGREDIENTS

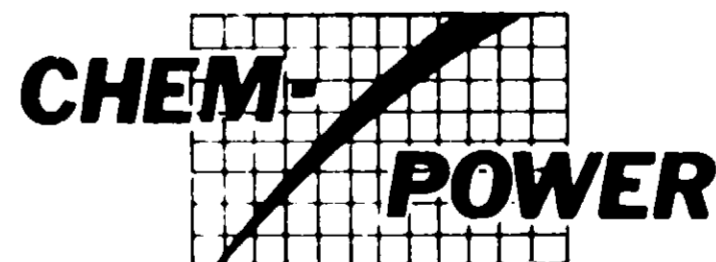
33%
100%

CAUTION

Keep out of the reach of children. Avoid contact with eyes and skin. If contact occurs, flush with water. Do not inhale vapors. Do not use in enclosed areas. Do not use in areas where food is prepared. Avoid contact with water. Do not use in areas where food is prepared. Do not use in areas where food is prepared.

WARNING Do not use in enclosed areas. Do not use in areas where food is prepared. Do not use in areas where food is prepared.

Mfg. in U.S.A. By:



Hanover Industrial Park
Cedar Knolls, N.J. 07927

ACCUMULATED
JUL 17 1977
10882-10

FM 226