

EVANS
GREEN WOOD
PRESERVATIVE
 for wood in contact with soil or water

EVANS
 PRODUCTS COMPANY
 Roanoke, VA
 24015



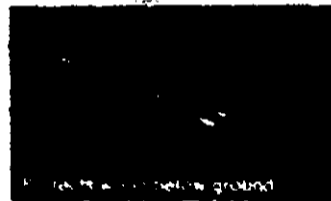
Protects against moisture, mildew, and rot

One U.S. Gallon
 3.785 Liters

Keep Out of Reach of Children.
WARNING
 See Additional Precautions on Back Panel

04-4X02 Weight Per Gal. 6.93 lbs. 24
 EPA Reg. No. 10866-R EPA Est. No. 10866-VA-1
 Active Ingredient: - - - - -
 Copper naphthenate 19.20%
 (equivalent to metallic copper - 2.0%)
 Inert Ingredients 80.80%
 Total 100.00%

GREEN WOOD PRESERVATIVE



PRECAUTIONARY STATEMENTS

HAZARDS TO HUMANS (AND DOMESTIC ANIMALS)

WARNING

Harmful if swallowed. May be absorbed through skin. Causes skin irritation. Avoid breathing vapor or spray mist. Do not get in eyes, or skin, or on clothing.

First Aid Statement: If swallowed, do not induce vomiting. Call a physician immediately. In case of contact, immediately flush eyes or skin with plenty of water. Get medical attention if irritation persists.

ENVIRONMENTAL HAZARDS

This product is toxic to fish. Keep out of lakes, streams or ponds. Do not contaminate water by cleaning of equipment or disposal of wastes.

PHYSICAL AND CHEMICAL HAZARDS

Combustible: Keep away from heat, sparks or open flame. Use with adequate ventilation.

DIRECTIONS FOR USE

IT IS A VIOLATION OF FEDERAL LAW TO USE THIS PRODUCT IN A MANNER INCONSISTENT WITH ITS LABELING.

STORAGE AND DISPOSAL

Do not reuse empty container. Wrap container and put in trash collection.

KEEP OUT OF REACH OF CHILDREN

EVANS GREEN WOOD PRESERVATIVE

An extra strength wood preservative which protects against the natural enemies of wood — moisture, rot, termite damage and mildew. This product will preserve, protect and seal all natural wood surfaces in contact with soil, water or concrete. Protects wood below ground or under water.

Where to Use

Apply liberally to unpainted fence posts, poles, foundation sills, docks, boats and all wood exposed to weather or moisture.

The green of Evans Green Wood Preservative is from the copper fungicide and will not last. Color will fade within a few months. Color may bleed through lighter colors of stains and paints.

Application

For proper penetration, wood should be free of bark, dry and well seasoned. Do not thin. Apply by brush, roller, spray or dipping. Use one thin coat under finishes. If no finish is to be used, apply two liberal coats within one (1) hour. THOROUGHLY cover ends. The more preservative absorbed by the wood, the longer and more effective the protection. Dries to touch rapidly. DO NOT OVERCOAT WITH LATEX PAINT OR CLEAR FINISHES UNTIL THOROUGHLY CURED (6-12 months). Use in well ventilated place. Avoid fire, flame, sparks or heaters.

Coverage

Approximately 100-300 square feet per gallon depending on method of application and porosity of wood being treated.

Clean-Up

Clean all equipment promptly with mineral spirits.

10856-8