

EVANS
STAIN & WOOD
PRESERVATIVE
 Semi-Transparent

EVANS
 PRODUCTS COMPANY
 ROANOKE VIRGINIA
 24015



Brings out the natural beauty of wood.
 Protects against moisture, mildew, and rot.

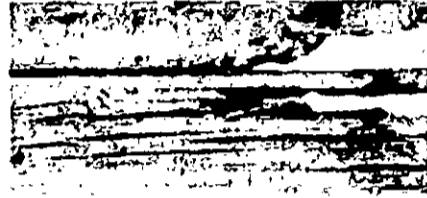
04-48870-D
 Jacobean

One U.S. Gallon
 3.785 Liters

KEEP OUT OF REACH OF CHILDREN
WARNING
 SEE BACK PANEL FOR ADDITIONAL PRECAUTIONS

EPA Reg. No. 10856-7 EPA Est. 10856-VA-1
 Active Ingredients:
 bis(tri-n-butyltin) oxide 0.4%
 Folpet [n-((trichloromethyl)thio)-
 phthalimide] 0.5%
 Inert Ingredients 99.1%
 100.0%

STAIN & WOOD PRESERVATIVE



PRECAUTIONARY STATEMENT HAZARDS TO HUMANS & DOMESTIC ANIMALS

WARNING

CONTAINS PETROLEUM DISTILLATE
AND bis(tri-butyl-tin) oxide

AND Folpet [n-[[trichloromethyl]thio]phthalimide]

- HARMFUL IF SWALLOWED. If swallowed do not induce vomiting. CALL PHYSICIAN IMMEDIATELY.
- HARMFUL IF ABSORBED THROUGH SKIN. Causes skin irritation. Wear rubber gloves, and goggles when applying and handling freshly treated lumber. In case of contact remove contaminated clothing immediately and wash skin with soap and water. Wash clothing before re-use. Wash hands thoroughly after handling.
- HARMFUL IF IN EYES. If in eyes flush with plenty of water and get medical attention.

ENVIRONMENTAL HAZARDS

This product is toxic to fish. Keep out of lakes, streams or ponds. Do not contaminate water by cleaning of equipment or disposal of wastes.

PHYSICAL OR CHEMICAL HAZARDS

COMBUSTIBLE. Keep away from heat, sparks or open flame. Use with adequate ventilation.

DIRECTIONS FOR USE

IT IS A VIOLATION OF FEDERAL LAW TO USE THIS PRODUCT IN A MANNER INCONSISTENT WITH ITS LABELING.

STORAGE AND DISPOSAL

Do not reuse empty container. Wrap container and put in trash collection.

KEEP OUT OF REACH OF CHILDREN

EVANS STAIN AND WOOD PRESERVATIVE

Evans Oil Stain and Wood Preservative represents new technology (U.S. Patent applied for) and brings out the natural beauty of wood while protecting against wood rot, mold, mildew and decay. Preserves solids and beautifies in one easy step by deeply penetrating the wood fiber to become an actual part of the wood. Evans Oil Stain and Wood Preservative conforms with the California Air Resources Board (CARB) solvent emission standard governing exterior architectural coatings.

Where To Use:

Evans Oil Stain and Wood Preservative is designed for use on exterior wood surfaces such as siding and trim, fences and similar wood surfaces. The solid colors hide the wood grain but still show the natural texture of the wood, while the semi-transparent colors let both the natural grain and texture show through.

How to Use:

Evans Oil Stain and Wood Preservative is ready for use. Do not add thinner. Stir thoroughly before using and occasionally while using.

Application:

All surfaces must be clean and dry before staining. Scrub unsightly mildew-infected areas with a solution of 1 quart household bleach and 3 quarts warm water. Let stand 30 minutes, then rinse with clean water. Apply stain only after area is completely dry. Apply liberally by brush, roller, pad applicator or spray. To eliminate lap marks, stain only a few boards at a time, working from top to bottom or from side to side, keeping the leading edge wet and stopping at such logical locations as corners, windows or door frames. Avoid staining in direct sunlight. Do not apply stain if the temperature is below 50° F (10° C). Dries to touch rapidly. Thorough drying requires 24 hours. If desired, a second coat may be applied at any time. Certain woods (e.g. cedar and redwood) contain natural dyes (Tannin) which sometimes bleed through the stain surface (More noticeable with lighter colors). These dye extracts may be unsightly but do not damage the stain. Should they occur, wash the affected area with a mild detergent solution.

Coverage:

100-200 square feet per gallon on rough, porous, unprimed surfaces. On previously stained surfaces approximately 100-200 square feet per gallon. It is recommended that a sample "brush-out" be made on a small, inconspicuous area of the surface to ensure satisfaction with the degree of transparency.

Clean Up:

Clean equipment promptly with mineral spirits.