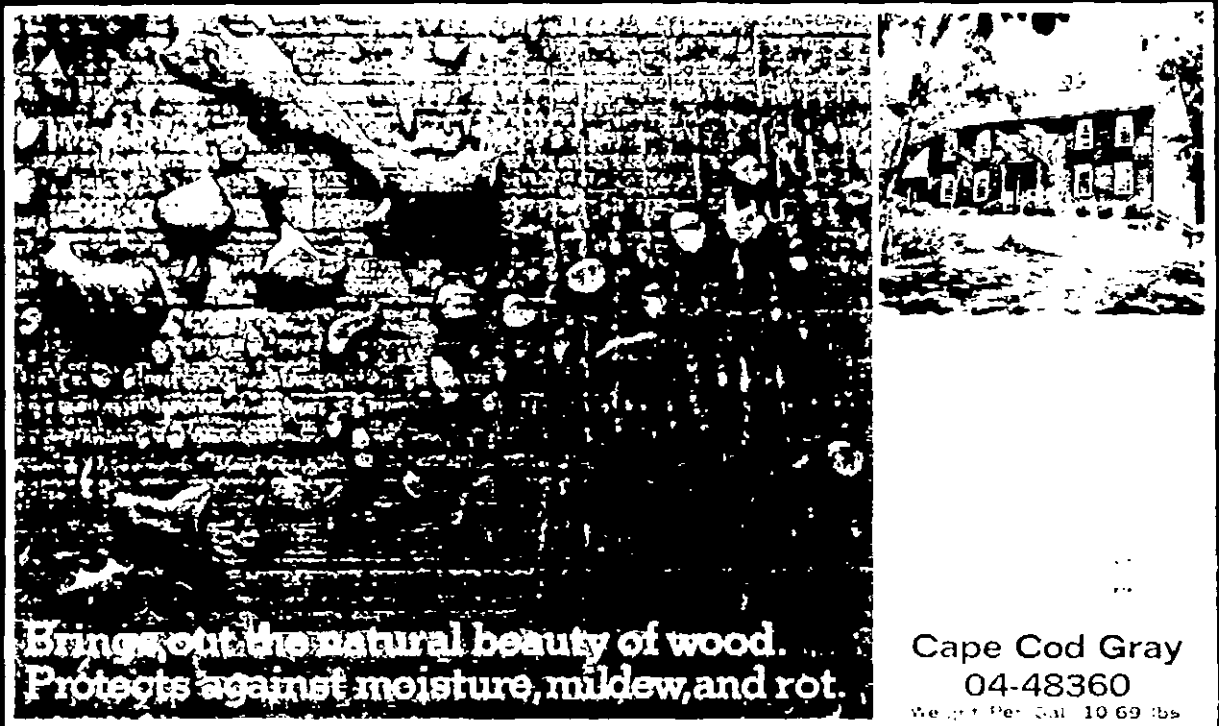


EVANS
STAIN & WOOD
PRESERVATIVE
Solid Color

EVANS
 PRODUCTS COMPANY
 ROANOKE, VIRGINIA
 240-5



Brings out the natural beauty of wood.
 Protects against moisture, mildew, and rot.



Cape Cod Gray
 04-48360
 Weight Per Gal. 10.69 lbs

One U.S. Gallon
 3.785 Liters

KEEP OUT OF REACH OF CHILDREN

WARNING

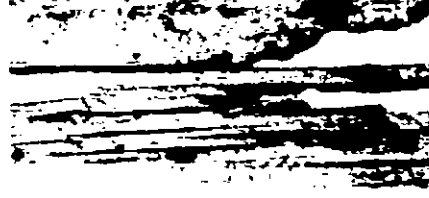
SEE BACK PANEL FOR ADDITIONAL PRECAUTIONS

EPA Reg. No. 10856-6 EPA Est. 10856-V4-1
 ACTIVE INGREDIENTS
 Copper Nonyl Oxide 3.0% 0.4%
 Tetraethylammonium hydroxide 6.0%
 INERT INGREDIENTS 93.6%
 100.0%

STAIN & WOOD PRESERVATIVE



Protects against moisture.



PRECAUTIONARY STATEMENT HAZARDS TO HUMANS & DOMESTIC ANIMALS

WARNING

CONTAINS PETROLEUM DISTILLATE

Always use this product carefully.

Always use this product in accordance with label directions.

- **HARMFUL IF SWALLOWED.** If swallowed, get medical attention. **CALL PHYSICIAN IMMEDIATELY.**
- **HARMFUL IF ABSORBED THROUGH SKIN.** Causes skin irritation. Wear rubber gloves and goggles when applying and handling freshly treated lumber. In case of contact, remove contaminated clothing immediately, and wash skin with soap and water. Wash clothing before reuse. Wash hands thoroughly after handling.
- **HARMFUL IF IN EYES.** If in eyes, flush with plenty of water and get medical attention.

ENVIRONMENTAL HAZARDS

This product is toxic to fish. Keep out of lakes, streams or ponds. Do not contaminate water by cleaning of equipment or disposal of wastes.

PHYSICAL OR CHEMICAL HAZARDS

COMBUSTIBLE. Keep away from heat, sparks or open flame. Use with adequate ventilation.

DIRECTIONS FOR USE

IT IS A VIOLATION OF FEDERAL LAW TO USE THIS PRODUCT IN A MANNER INCONSISTENT WITH ITS LABELING.

STORAGE AND DISPOSAL

Do not reuse empty container. Wrap container and put in trash collection.

KEEP OUT OF REACH OF CHILDREN

EVANS STAIN AND WOOD PRESERVATIVE

Evans Stain and Wood Preservative represents new technology. A new Patent applied for, and brings out the natural beauty of wood while protecting against wood rot, mold and decay. Preserves, seals and beautifies in one easy step by deep penetrating the wood fiber to become an integral part of the wood. Evans Stain and Wood Preservative is formulated with the California Air Resources Board (CARB) solvent emission standard governing water based finishing products.

Where To Use:

Evans Stain and Wood Preservative is designed for use on exterior wood surfaces such as siding and trim, fences and similar wood surfaces. Do not use on horizontal surfaces such as decks, porches, railings, steps or outdoor furniture. The solid colors hide the wood grain, but still show the natural texture of the wood, while the semi-transparent colors let both the natural grain and texture show through.

How To Use:

Evans Stain and Wood Preservative is ready to use. Do not dilute. Stir thoroughly before use and occasionally while using.

Application:

All surfaces must be clean and dry before staining. Sand, scrape, or remove infected areas with a solution of 1 quart household bleach and 3 quarts warm water. Let stand 30 minutes then rinse with clean water. Apply stain only after area is completely dry. Apply liberally by brush, roller, pad applicator or spray. To eliminate lap marks, stain only a few boards at a time, working from top to bottom, or from side to side, keeping the leading edge wet, and stopping at such logical separations as corners, windows, or door frames. Avoid staining in direct sunlight. Do not apply stain if the temperature is below 50° F. (10° C). Dries to touch rapidly. Thorough drying requires 24 hours. If desired, a second coat may be applied, at any time. Certain woods (e.g. cedar and redwood) contain natural dye. Tannin can sometimes bleed through the stain surface. More noticeable with lighter colors. These dye extracts may be unsightly, but do not damage the stain. Should they occur, wash the affected area with a mild detergent solution.

Coverage:

100-200 square feet per gallon on rough, porous, unpainted surfaces. On previously stained surfaces, approximately 100-300 square feet per gallon. It is recommended that a sample brush-out be made on a small inconspicuous area of the surface to ensure satisfaction with the degree of transparency.

Clean-Up:

Clean equipment promptly with mineral spirits.