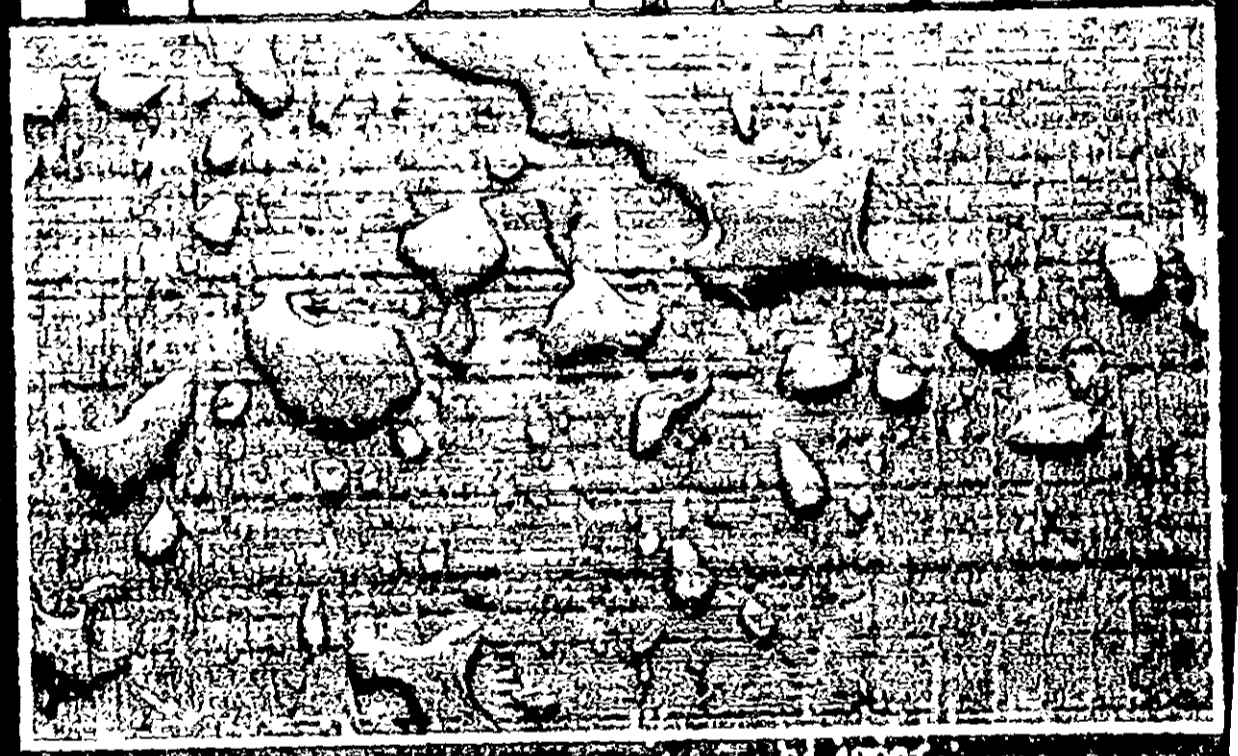




**EVANS**  
PRODUCTS COMPANY  
ROANOKE, VIRGINIA  
24015

# EVANS CLEAR WOOD PRESERVATIVE



One U.S. Gallon  
3.785 Liters

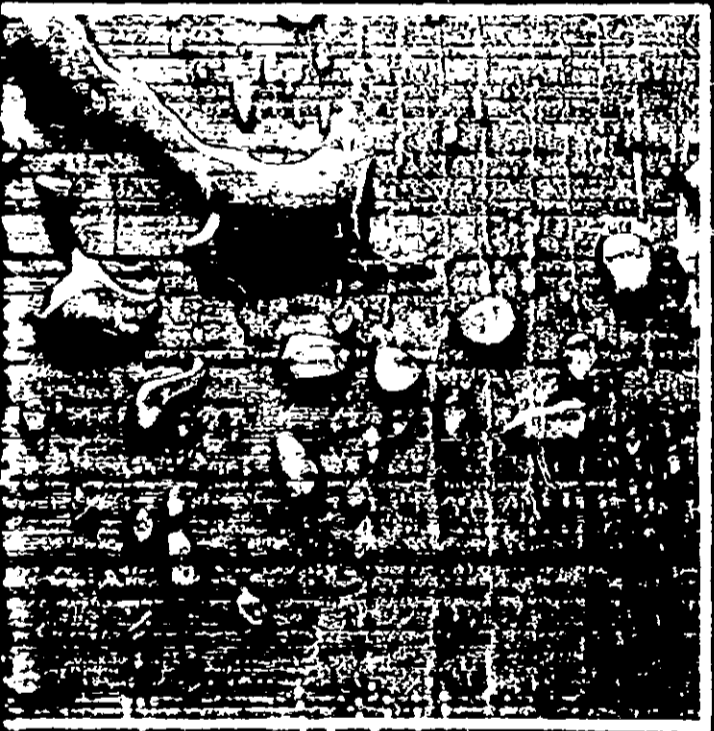
KEEP OUT OF REACH OF CHILDREN

**CAUTION**

SEE BACK PANEL FOR ADDITIONAL PRECAUTIONS

D4-4800T • Weight Per Gal. 6.85 lbs.  
EPA Reg. No. 10856-4 EPA Est. 10856-VA-1  
Active ingredient: Zinc naphthenate  
(equivalent to metallic zinc - 2.0%) 15.70%  
Inert ingredients 84.30%  
100.00%

# VANS R WOOD IRVATIVE

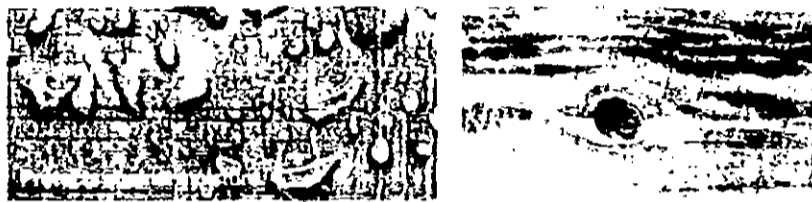


CHILDREN

PRECAUTIONS:

**D4-4800T** Weight Per Gal 6.85 lbs  
 EPA Reg. No 10856-4 EPA Est 10856-VA-1  
 Active ingredient: Zinc naphthenate  
 (equivalent to metallic zinc - 2.0%) 15.70%  
 Inert ingredients ..... 84.30%  
 100.00%

## CF EAR WOOD PRE



PRECAUTIONARY STATEMENTS  
 HAZARDS TO HUMANS  
 (AND DOMESTIC ANIMALS)

### CAUTION

ENVIRONMENTAL HAZARDS

PHYSICAL OR CHEMICAL HAZARDS

DIRECTIONS FOR USE

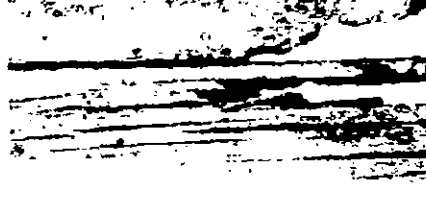
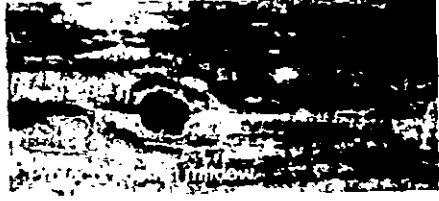
IT IS A VIOLATION OF FEDERAL LAW TO USE THIS PRODUCT  
 IN A MANNER INCONSISTENT WITH ITS LABELING

STORAGE AND DISPOSAL

KEEP OUT OF REACH OF CHILDREN

ACCEPTED

# CT EAR WOOD PRESERVATIVE



## PRECAUTIONARY STATEMENTS HAZARDS TO HUMANS (AND DOMESTIC ANIMALS)

### CAUTION

CONTAINS PETROLEUM DISTILLATE

- HARMFUL IF SWALLOWED. If swallowed, do not induce vomiting. Call physician immediately.
- Avoid contact with skin, eyes or clothing.
- In case of contact immediately flush eyes or skin with plenty of water.
- Get medical attention if irritation persists.

### ENVIRONMENTAL HAZARDS

This product is toxic to fish. Keep out of lakes, streams or ponds. Do not contaminate water by cleaning of equipment or disposal of wastes.

### PHYSICAL OR CHEMICAL HAZARDS

COMBUSTIBLE. Keep away from heat, sparks or open flame. Use with adequate ventilation.

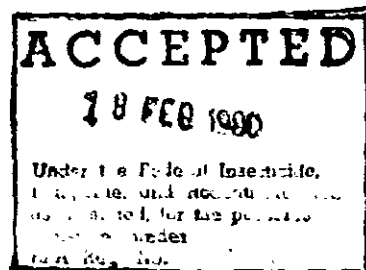
### DIRECTIONS FOR USE

IT IS A VIOLATION OF FEDERAL LAW TO USE THIS PRODUCT IN A MANNER INCONSISTENT WITH ITS LABELING.

### STORAGE AND DISPOSAL

Do not reuse empty container. Wrap container and put in trash immediately.

**KEEP OUT OF REACH OF CHILDREN.**



## EVANS CLEAR WOOD PRESERVATIVE

Protects against the natural enemies of wood—moisture, rot and mildew. This product will protect, seal and beautify all the natural wood surfaces around your home. Retards warping, swelling, shrinking and checking.

### WHERE TO USE

Recommended for use on millwork, plywood, decks, outdoor furniture, shutters, porches, fences, trellises, pickets, siding and exterior wood that is in contact with moisture. An ideal first coat prior to topcoating with paint or varnish. May be used as a water-repellent finish over a stain coating.

### APPLICATION

For proper penetration, wood must be clean and dry. Apply by brush, roller, spray, or dipping. If immersion is impractical, allow a second clear coat within one hour of the first coat.

### COVERAGE

Approximately 100-200 square feet per gallon, depending upon method of application and porosity of wood being treated.

### CLEAN-UP

Clean up equipment promptly with mineral spirits.