

10807-199

2/19/2010

1/3



UNITED STATES ENVIRONMENTAL PROTECTION AGENCY  
WASHINGTON, D.C. 20460

OFFICE OF  
PREVENTION, PESTICIDES  
AND TOXIC SUBSTANCES

Ms. Susan Watson  
Amrep, Inc.  
990 Industrial Park Drive  
Marietta, GA 30062

FEB 19 2010

Dear Ms. Watson:

Subject: Label amendment- PR Notice 2007-4 and 2008-1  
Misty Dualcide P3 RTU  
EPA Registration Number 10807-199  
Your submission dated February 1, 2010

The application referred to above, submitted in connection with registration under the Federal Insecticide, Fungicide, and Rodenticide Act, as amended, is acceptable with the following comment:

- 1. Change "Triple rinse or equivalent, then offer for recycling or reconditioning, or puncture and dispose of in a sanitary landfill or by incineration, of if allowed by state and local authorities, by burning." to "Triple rinse or equivalent, then offer for recycling or reconditioning, or puncture and dispose of in a sanitary landfill or by incineration, if allowed by state and local authorities."

A stamped label is enclosed for your records.

If you have any questions regarding this action, please contact Linda A. DeLuise of my team at (703) 305-5428.

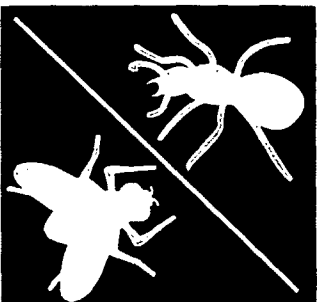
Sincerely yours,

*Linda A. DeLuise*

Richard Gebken  
Product Manager (10)  
Insecticide Branch  
Registration Division (7505P)

Enclosure

19 2010  
 Under the Federal Insecticide, Fungicide, and Rodenticide Act  
 as amended, for the pesticide  
 registered under EPA Reg. No.  
 10-207-199



## DUALCIDE P3 RTU

- For Use in Homes and Non-Food Areas of Food/Feed Processing Establishments, Kennels, Commercial Buildings, Schools, Motels, and Hotels.
- For Control of Fleas, Brown Dog Ticks and Lice on Premises and on Dogs
- For Control of Ticks Which May Cause Lyme Disease on Premises
- Controls Fleas and Ticks on Dogs for 14 Days
- For Use Both Indoors and Outdoors
- Provides 60-day (Two Months) Control of Cockroaches, Fleas, and Stored Product Pests

ACTIVE INGREDIENTS:  
 permethrin: 0.50%  
 OTHER INGREDIENTS†: 99.50%  
 TOTAL: 100.000%

†(3-phenoxyphenyl) methyl (±) cis/trans 3-(2,2-dichloroethenyl) 2,2-dimethylcyclopropanecarboxylate.  
 Cis/trans ratio: min. 35% (±) cis and max. 65% (±) trans.

KEEP OUT OF REACH OF CHILDREN.

### CAUTION:

See side panel for additional precautionary statements.

**B00442**

NET CONTENTS 1 GALLON (3.8 LITERS)

**PRECAUTIONARY STATEMENTS: HAZARDS TO HUMANS AND DOMESTIC ANIMALS:**  
**CAUTION:** Wash thoroughly with soap and water after handling.  
**ENVIRONMENTAL HAZARDS:** This product is toxic to fish. To protect the environment, do not allow pesticides to enter or run off into storm drains, drainage ditches, gutters or surface waters. Applying this product in calm weather when rain is not predicted for the next 24 hours will help to ensure that wind or rain does not blow or wash pesticide off the treatment area.

**STORAGE & DISPOSAL:** Do not contaminate water, food or feed by storage or disposal.  
**PESTICIDE STORAGE AND SPILL PROCEDURES:** Store upright at room temperature. Avoid exposure to extreme temperatures. In case of spill or leakage, soak up with an absorbent material such as sand, sawdust, earth, fuller's earth, etc. Dispose of with chemical waste. **PESTICIDE DISPOSAL:** Wastes resulting from the use of this product may be disposed of on site or at an approved waste disposal facility. **PESTICIDE DISPOSAL:** Wastes resulting from the use of this product may be disposed of on site or at an approved waste disposal facility. **CONTAINER DISPOSAL: Containers one gallon and smaller: IF EMPTY:** Nonrefillable container. Do not reuse or refill this container. Place in trash or offer for recycling if available. **IF PARTLY FILLED:** Call your local solid waste agency or 1-800-CLEANUP for disposal instructions. Never place unused product down any indoor or outdoor drain. **Containers larger than one gallon: Metal Containers:** Triple rinse or equivalent. Then offer for recycling or reconditioning, or puncture and dispose of in a sanitary landfill, or by other procedures approved by state and local authorities. **Plastic Containers:** Triple rinse or equivalent, then offer for recycling or reconditioning, or puncture and dispose of in a sanitary landfill or by incineration, if allowed by state and local authorities, by burning. If burned, stay out of smoke. **Glass Containers:** Triple rinse or equivalent, then dispose of in a sanitary landfill or by other approved state and local procedures.

**DIRECTIONS FOR USE:** It is a violation of Federal law to use this product in a manner inconsistent with its labeling.

**READ ENTIRE LABEL BEFORE EACH USE  
 PET USE APPLIES TO USE ONLY ON DOGS**

Not for use on plants being grown for sale or other commercial use, or for commercial seed production, or for research purposes. For use on plants intended for aesthetic purposes or climatic modification and being grown in ornamental gardens or parks, or on golf courses or lawns and grounds. Avoid contamination of feed and foodstuffs. Remove pets and birds and cover fish aquaria before space spraying or surface applications. Do not use on humans. Vacate room after treatment and ventilate before reoccupying. Do not allow children or pets to contact treated areas until surfaces are dry.

**SHAKE WELL BEFORE USING.**

**INDOOR APPLICATION:**

Do not use in food/feed areas of food/feed handling establishments, restaurants or other areas where food/feed is commercially prepared or processed. Do not use in serving areas while food is exposed or facility is in operation. Serving areas are areas where prepared foods are served such as dining rooms but excluding areas where foods may be prepared or held. In the home, all food processing surfaces and utensils should be covered during treatment or thoroughly washed before use. Exposed food/feed should be covered or removed. Nonfood/feed areas are areas such as garbage rooms, lavatories, floor drains (to sewers), entries and vestibules, offices, locker rooms, machine rooms, boiler rooms, garages, mop closets and storage (after canning or bottling). Vacate treated areas and ventilate before reoccupying. For maximum effectiveness, a combination of spot, surface treatment and fogging is recommended. Do not apply to classrooms while in use. In the

w/n

home, all food processing surfaces and utensils should be covered during treatment or thoroughly washed before use. Do not apply this product in occupied patient rooms or in any rooms/areas while occupied by patients, the elderly or infirm. Do not apply to institutions (including libraries, sports facilities, etc.) in the immediate area when occupants are present. Exposed food/feed should be covered or removed.

**SURFACE SPRAYING: For 60-Day (Two Months) control Cockroaches, Waterbugs, Palmetto Bugs, Scorpions, Millipedes, Centipedes, Sowbugs, Pillbugs, Ants, Silverfish, Firebrats, Spiders, Crickets, Clover Mites, Cheese Mites, Granary Weevils, Rice Weevils, Confused Flour Beetles, Rust Red Flour Beetles, Drugstore Beetles, Meal Worms, Grain Mites and Cadellids:** Direct the spray into hiding places, cracks and crevices, and behind shelves and drawers. For silverfish, spray bookcases. For ants, spray trails, nest and points of entry. **To control Carpet Beetles:** Spray edges of carpeting and under carpeting and rugs. Make localized application to floor and baseboards. Spray directly into cracks, crevices and infested areas of shelving. **To control Bedbugs:** Spray mattresses lightly, particularly around tufts and seams. Take beds apart and spray in all joints. Treat baseboards, molding and floors. **To control Fleas (adult and larvae) and Ticks, including Ticks which may carry Lyme Disease (adults and larvae):** Thoroughly spray infested areas, pet beds, resting quarters, nearby cracks and crevices, along and behind baseboards, moldings, window and door frames, and entire area of floor and floor covering. Fresh bedding should be placed in animal quarters following treatment. Allow to dry thoroughly before allowing pets to contact treated areas. **To control Clothes Moths:** Remove any infested articles from storage, brush thoroughly, and air for several hours in sunlight, if possible. Apply spray liberally to empty chests, closets, bureaus and other storages directing the spray into cracks, joints and crevices. After airing, infested articles may be treated lightly, keeping nozzle at least three feet from fabric to avoid staining. **To Kill Lice and Louse Eggs:** Spray in an inconspicuous area to test for possible staining or discoloration. Inspect again after drying, then proceed to spray entire area to be treated. Spray from a distance of 8 to 10 inches. Treat only those garments and parts of bedding, including mattresses and furniture that cannot be either laundered or dry cleaned. Allow all treated articles to dry thoroughly before use. **SPACE SPRAYING:** Close doors and windows and shut off ventilating systems. Apply with a good machine adjusted to deliver a fine mist or fog. **For rapid control of House Flies, Fruit Flies, Gnats, Mosquitoes, Skipper Flies, Wasps, Hornets, Bees, Black Flies, Angoumois Grain Moths, Mediterranean Flour Moths, Indian Meal Moths and Tobacco Moths:** Direct spray at an upward angle, distributing it uniformly throughout the entire area at a rate of 1 ounce per 1000 cubic feet of space. Keep area closed for 2 hours. Ventilate before reoccupying.

**FOGGING: To kill exposed or accessible stages of the above named crawling insects:** Use a rate of 1 gallon to 20,000 to 40,000 cubic feet for space. Contact insects directly when possible. Keep area closed for 2 hours. Ventilate before reoccupying.

**ON LIVESTOCK: To protect cattle (beef and dairy), goats, sheep, hogs and horses from Horn Flies, Face Flies, House Flies, Mosquitoes and Gnats:** Apply a light mist sufficient to wet the surface of the hair. For face flies, spray face and head, but do not spray into eyes. **To control Stable Flies, Horse Flies and Deer Flies:** Apply at a rate of 2 ounces per adult animal, sufficient to wet the hair thoroughly. **To control Blood-Sucking Lice:** Apply to the infested areas of the animal, using a stiff brush to get the spray to the base of the hair. **To control Poultry Lice:** Spray roosts, walls and nests or cages thoroughly. This should be followed by spraying over the birds with a fine mist. **To control Bedbugs and Mites in poultry houses:** Spray crevices of roost poles, cracks in walls, and cracks in nests where the bedbugs and mites hide.

**ON DOGS:** Consult a veterinarian before using this product on medicated, debilitated, aged, pregnant or nursing animals. Do not use on dogs under 12 weeks. Sensitivities may occur after using ANY

pesticide product for pets. If signs of sensitivity occur bathe your pet with mild soap and rinse with large amounts of water. If signs continue, consult a veterinarian immediately. **To control Fleas, Ticks and Lice:** Start spraying at the tail, moving the dispenser rapidly and making sure that the animal's entire body is covered, including the legs and underbody. While spraying, fluff the hair so that the spray will penetrate to the skin. Make sure spray wets thoroughly, but do not saturate animal. Do not spray into eyes or face. Avoid contact with genitalia. Use protective gloves or mitts when applying product. DO NOT USE ON CATS OR KITTENS.

#### OUTDOOR APPLICATION:

**To control Ticks, including Ticks which may carry Lyme Disease (perimeter treatment):** Use this product as a residual treatment to control Ticks including the Deer Tick (*Ixodes dammini*), Lone Star Tick (*Amblyomma americanum*), Brown Dog Tick (*Rhipicephalus sanguineus*), American Dog Tick (*Dermacentor variabilis*) and Western Black-legged Tick (*Ixodes pacificus*): For each area listed below, apply until surface is wet but not to the point of runoff (approximately 1 gal/750-1000 square feet). Treat around windows and doors, porches, screens, eaves, patios, garages, under stairways and in crawl spaces where these pest may enter. Treat a band of vegetation and leaf litter 6 to 10 feet wide around the outside of buildings to help control ticks occurring there. To help control ticks in outdoor activity areas, treat a band of vegetation and leaf litter 6-10 feet wide and adjacent to activity areas, especially where dense vegetation occurs. **For control of Garden Insects:** For use on roses, dahlias, asters and other ornamentals to kill Japanese Beetles hit by the spray as well as Whiteflies, Aphids, Exposed Thrips, Spiders, Red Mites and Leafminers: May be used on plants as a multi-purpose spray in small gardens and for spot treatments of incipient insect infestations to prevent spreading in large garden areas. May also be used on other plants such as African violets, asters, azaleas, begonias, camellias, carnations, chrysanthemums, dahlias, delphiniums, dogwoods, English ivy, eunonymus, fuchsia, geraniums, crassula, grape vines, Kentia palms, laurels, marigolds, rhododendrons, roses, rubber plants, snapdragons, stocks, wandering jews and zinnias. **Effective when used as directed against Whiteflies, Aphids, Spider and Red Mites, Exposed Thrips, Lace Bugs, Japanese Beetles, Pavement Ants, Clover Mites and Armyworms:** When spraying plants, do not operate closer than 18 inches. Use sweeping motion. Be cautious about wetting tender foliage, young plants and new growth. Do not spray plants when temperatures exceed 90°F. Contact insects directly whenever possible. **Adult Mosquito Control:** Remove all exposed food and cooking utensils. Cover all food handling surfaces or wash thoroughly after treatment and before use. Do not use on edible crops. Apply a fine mist to thoroughly treat the entire area. For best results, treat when the wind velocity does not exceed 5 miles per hour but do not apply when wind speeds exceed 10 miles per hour. Treat shrubbery or vegetation where mosquitoes may rest. Apply at a rate of 2.5 pints per acre (0.9 ounce per 1000 square feet). Using truck-mounted conventional misting equipment such as Rotomist models 51C, 91 or 100HT traveling at 5 mph to treat a 300 foot swath, calibrate equipment to deliver 0.95 gallon per minute. Under no conditions should open water be treated with this product. Not to be used within 100 feet (30 meters) of lakes and streams. Buyer assumes all risks of use, storage or handling of this product not in strict accordance with directions given herewith.

MADE IN U.S.A. BY:

**amrep**  
990 Industrial Park Drive  
Marietta, GA 30062  
770.422.2071 • 800.241.7766

EPA REG. NO. 10807-199

PRT4788 01/10p  
EPA EST. NO. 10807-TX-1

**Boo442**