

12 JUN 1992

Ms. Susan Watson  
Amrep, Incorporated  
990 Industrial Park Drive  
Marietta, GA 30062

Dear Ms. Watson::

Subject: Updated Labeling  
Repc-Tox Space Spray Insecticide  
EPA Registration Number 10807-101  
Submission dated May 27, 1992

The labeling referred to above, submitted in connection with registration under the Federal Insecticide, Fungicide, and Rodenticide Act, as amended, is acceptable subject to the comments listed below. Submit one (1) copy of the finished labeling prior to releasing the product for shipment.

1. Submit a current Confidential Statement of Formula which includes all of the pertinent information, including the upper and lower certified limits, the bulk density of the product, and the flashpoint/flame extension.
2. Add the common chemical name "Resmethrin" to the active ingredient declaration, before the technical name.
3. Delete the term "related compounds" from the label ingredients declaration. Unless otherwise substantiated, these isomers should be considered inert compounds. If the "related compounds" are determined to have pesticidal activity, they should be incorporated into the declaration for the active ingredient, and not distinguished separately as "related compounds" or "other isomers".

CONCURRENCES

SYMBOL							
SURNAME							
DATE							

UNITED STATES ENVIRONMENTAL PROTECTION AGENCY

204

4. Expand the sentence "All food processing surfaces....", which appears in the **PRECAUTIONARY STATEMENTS** section of the product label, to read as follows:

All food processing surfaces, benches, shelving, etc. should be covered or removed during treatment or thoroughly washed with an effective cleaning compound followed by a potable water rinse prior to use.

Sincerely,



Richard F. Mountfort  
Product Manager 10  
Insecticide-Rodenticide Branch  
Registration Division

CONCURRENCES

SYMBOL								
SURNAME								
DATE								

PH 10

**PRECAUTIONARY STATEMENTS:  
Hazards to Humans and  
Domestic Animals.**

For Use In: **SCHOOLS, HOTELS,  
MOTELS, OFFICE BUILDINGS, HOSPI-  
TALS, NURSING HOMES, FOOD  
PLANTS, BAKERIES, RESTAURANTS,  
FACTORIES and WAREHOUSES.**

**CAUTION:** Harmful if swallowed or inhaled. Avoid breathing vapor or spray mist. Avoid contact with skin. Wash contaminated clothing before reuse. Do not contaminate feed or foodstuffs.

**Food Processing Plants:** Use only when the plant is not in operation. Foods should be removed or covered during treatment. All food processing surfaces should be covered or thoroughly cleaned before using. In hospitals, patients should be removed from room prior to treatment. Room should be ventilated for 2 hours after treatment. Do not return patients to room until after ventilation.

**Environmental Hazards:** This product is toxic to fish. Keep out of lakes, streams or ponds. Do not apply when weather conditions favor drift from areas treated.

**Physical or Chemical Hazards:** Do not use, pour, spill or store near heat or open flame. Keep container closed.

**DIRECTIONS FOR USE**

It is a violation of Federal law to use this product in a manner inconsistent with its labeling. For most effective results, use a good sprayer adjusted to deliver a fine mist.

MANUFACTURED BY



990 industrial park drive  
Marietta, Georgia 30052

63 industrial drive  
Cartersville, Georgia 30120

945 east pleasant run road  
Lancaster, Texas 75146

3600 west carriage drive  
Santa Ana, California 92704

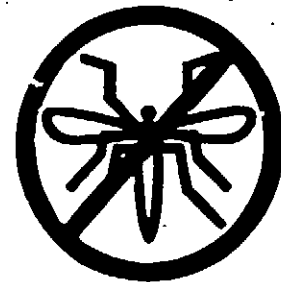
**WILLY**<sup>®</sup>

ACCEPTED  
with COMMENTS  
in EPA Letter Dated

12 JUN 1992

Under the Federal Insecticide,  
Fungicide, and Rodenticide Act  
as amended, for the pesticide  
registered under EPA Reg. No.  
10807-101

**REPCO-TOX**  
Space Spray  
Insecticide



**ACTIVE INGREDIENTS:**

† (5-Benzyl-3-furyl) methyl-2,2-dimethyl-3-(2-methylpropenyl)  
cyclopropanecarboxylate ..... 0.250% w/w  
Related compounds ..... 0.034%

**INERT INGREDIENTS:** ..... 99.716%

**TOTAL** ..... 100.00%

\* Cis/trans isomers ratio: max. 30% (-) cis. and min. 70% (-) trans.

† U.S. Patent No. 3,465,007

CONTAINS PETROLEUM DISTILLATES

**KEEP OUT OF REACH OF CHILDREN.**

**CAUTION**

**USE ONLY AS DIRECTED.**

See added cautions on side panel.

**STATEMENT OF PRACTICAL TREATMENT**

For skin contact, wash area with soap and water.

For eyes, flush with water for 15 minutes and contact a physician.

If ingested, do not induce vomiting. Contact a physician at once.

**FOR INDUSTRIAL AND INSTITUTIONAL USE ONLY.**

EPA REG NO 10807-101

EPA EST NO 10807-GA-1/GA-2/TE-1/CA

Authorized by USDA for use in federally  
inspected meat and poultry plants

R-415

NET CONTENTS

GALLON(S)

**BEST AVAILA**