

10807 - 6

04/06/1977

1/1

CAUTION

Do not apply directly to food. Cover or remove all food and food processing equipment during application. Use this product in food processing plants only when plant is not in operation. All food processing surfaces should be covered or thoroughly washed with potable water before using. Remove birds and pets. Cover fish aquariums before spraying. Avoid inhalation of spray mist. Avoid skin contact.

WARNING: Contents under pressure. Do not puncture container. Do not store at temperatures exceeding 130 F. Do not use or store near heat or open flame. Do not incinerate or spray into open flame.

ACTIVE INGREDIENTS:

Pyrethrins 30%
 *Piperonyl Butoxide, technical 60%
 N-octyl bicycloheptene dicarboximide 1.00%
 Petroleum distillate 12.80%

INERT

INGREDIENTS 85.30%
 *Equivalent to 0.48% (butylcarbityl) (6-propylpiperonyl) ether and 0.12% related compounds.

Manufactured by

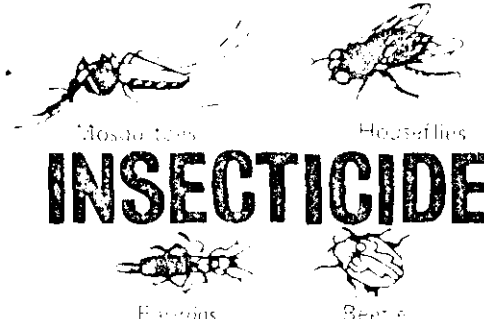
AERO MIST, INC.
 990 Industrial Park Drive
 Marietta, Georgia 30062

MISTY

CHERRY BLOSSOM

Multi-Purpose

INSTITUTION SIZE

**INSECTICIDE**

DUAL SYNERGIST

EPA Reg No. 10807-6

EPA Est. 10807-GA-1

CAUTION

KEEP OUT OF REACH OF CHILDREN.
 CONTENTS UNDER PRESSURE.

See additional cautions on back panel.
 NET. WT. 18 OZ. (1 LB. 2 OZ.)

DIRECTIONS FOR USE

To kill houseflies, mosquitoes, moths, gnats, fleas, roaches, silverfish, ants, bedbugs, spiders, centipedes, and accessible flying forms of grain infesting insects (the Angoumois Grain Moth, Mediterranean Flour Moth, Indian Meal Moth) accessibly flying forms of stored product pests (Tobacco Moth), and also crawling Carpet Beetles, Drug Store Beetles and Pea Weevils; close all doors and windows. Point nozzle upward and direct the aerosol mist to all parts of the area to be treated. Fog particularly well in areas in which these insects are most likely to congregate or rest. Fog at the rate of 3 seconds per 1000 cubic feet of space. Best results are obtained when sprayed directly on crawling insects.

Keep the treated area closed for 15 minutes. Do not remain in treated area and ventilate the area after treatment is completed. Do not spray closer than 36 inches to fabrics or upholstery. Spraying closer than directed or excessive treatment may cause damage.

