

181

10807-3

FIG 17

ACCEPTED

MAR 6 1980

Under the Federal Insecticide, Fungicide, and
 Rodenticide Act, as amended, this
 pesticide registration
 EPA Reg. No. 10807-3

PRECAUTIONARY STATEMENTS
 Hazards to Humans and Domestic Animals

CAUTION

Harmful if swallowed or absorbed through skin. Avoid breathing vapors or spray mist. Avoid contact with skin and eyes. In case of contact, immediately flush eyes or skin with plenty of water. Obtain medical attention if irritation persists. If swallowed, do not induce vomiting. Call a physician immediately.

Do not apply directly to food. In commercial food handling facilities, cover or remove any food and food processing equipment during application. Do not apply while food processing is underway. After space spraying in food processing plants, wash all equipment, benches, shelving, etc., where exposed food will be handled, with an effective cleaning compound followed by a potable water rinse. All food processing surfaces and utensils should be covered during treatment, or thoroughly washed before use. Remove birds and pets. Cover fish aquariums before spraying.

PHYSICAL OR CHEMICAL HAZARDS

THIS PRODUCT CONTAINS AN EXTREMELY FLAMMABLE PROPELLANT. Do not use or store near fire, sparks or heated surfaces. Turn off pilot lights in gas appliances and unplug or turn off electrical equipment in the use area. After airing out phase is completed, relight pilot lights and reconnect electrical current. Do not smoke in the use area. Contents under pressure. Do not puncture or incinerate container. Exposure to temperatures above 130° F may cause bursting. Incineration of container may cause explosion.

DIRECTIONS FOR USE

It is a violation of Federal law to use this product in a manner inconsistent with its labeling

STORAGE & DISPOSAL

Storage: Store in a cool area away from heat or open flame. Disposal: Do not reuse empty container. Wrap container and put in trash collection.

SHAKE WELL BEFORE USING.

To kill **FLIES, MOSQUITOES, GNATS, WASPS, HORNETS:** Close doors and windows and spray toward upper corners of room. Keep valve depressed so as to thoroughly mist the room (6-7 seconds per 1,000 cubic ft.). Leave room closed for 15 minutes, after which doors and windows may be opened.

To kill **ROACHES, WATERBUGS, SILVERFISH, CRICKETS, ANTS.** Spray baseboards, cracks, crevices, moist areas, and openings around sinks and pipes and other hiding places, hitting the insects directly. Spray ant hill and ant trails over windows and door sills and other locations. Repeat as necessary for control

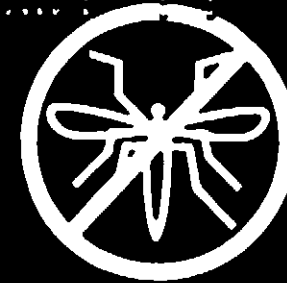
Manufactured By:

AMREP, INC.

990 Industrial Park Drive
 Marietta, Georgia 30062

WASPS

ECONO KILL



For Use in Households, Food and Non-Food Areas of Warehouses, Food Processing Plants, Motels, Hotels, Theaters, Schools and Offices

ACTIVE INGREDIENTS

Permethrin 0.5%
 Cyfluthrin 0.5%
 Pyrethrin 0.5%
 Pyrethroid 0.5%
 Pyrethrin 0.5%
 Pyrethroid 0.5%
 Pyrethrin 0.5%
 Pyrethroid 0.5%

Keep out of reach of children.

CAUTION

See back panel for additional precautionary statements.

EPA Reg. No. 10807-3

EPA Est. No. 10807-GA-1

NET WT. 16 OZ. (1 LB.)