



# MAGNACIDE<sup>TM</sup> 4551

## OIL FIELD MICROBIOCIDES

### ACTIVE INGREDIENTS

5-Chloro-2-methyl-4-isothiazolin-3-one ..... 1.15%  
2-Methyl-4-isothiazolin-3-one ..... 0.35%

INERT INGREDIENTS ..... 98.50%  
TOTAL ..... 100.00%

## DIRECTIONS GENERAL CLASS

It is a violation of Federal law to use this product  
For the control of slime-forming and sulfate-reducing bacteria  
recovery injection fluids, drilling, fracturing and completion  
on the severity of the contamination

**DANGER**



**POISON**

KEEP OUT OF REACH OF CHILDREN

**DANGER**

CONTAINS METHANOL

### PRECAUTIONARY STATEMENTS HAZARDOUS TO HUMANS AND DOMESTIC ANIMALS

CORROSIVE. CONTAINS METHANOL, WHICH MAY CAUSE BLINDNESS. CAUSES EYE DAMAGE AND SKIN  
BURNS. MAY CAUSE ALLERGIC SKIN REACTION. VAPOR HARMFUL IF INHALED. FATAL IF SWALLOWED

Do not get in eyes, on skin, or clothing. Wear goggles or face shield and rubber gloves when handling. Avoid  
breathing vapor or mist. Avoid contamination of food. Do not take internally. Wash thoroughly with soap and  
water after handling and before eating or smoking. Remove contaminated clothing and wash before reuse.

### ENVIRONMENTAL HAZARDS

This pesticide is toxic to fish and wildlife. Do not discharge into lakes, streams, ponds or public waters unless in  
accordance with a NPDES permit. For guidance, contact your Regional Office of the Environmental Protection  
Agency.

Do not contaminate waters by cleaning of equipment or disposal of wastes.

### PHYSICAL OR CHEMICAL HAZARDS

FLAMMABLE. Do not use or store near heat or open flame.

### STORAGE AND DISPOSAL

STORAGE: Do not contaminate water, food, or feed by storage or disposal. Open dumping is prohibited. If  
plastic, do not reuse empty container.

DISPOSAL: Pesticide or residue that cannot be used or chemically reprocessed should be disposed of in a  
landfill approved for pesticides or buried in a safe place away from water supplies. Triple rinse (or equivalent) all  
containers and, for metal containers, offer for recycling or reconditioning (for plastic containers dispose in an  
incinerator), or transport in landfill approved for pesticide containers or bury in a safe place. Consult federal, state  
or local disposal authorities for approved alternative procedures.

NOTICE: Seller warrants that the product conforms to its chemical description and is reasonably fit for the  
purpose stated on the label when used in accordance with directions under normal conditions of use, but neither  
this warranty nor any other warranty of merchantability or fitness for a particular purpose, express or implied,  
extends to the use, storage or handling of this product in a manner other than as directed by label instructions,  
or under abnormal conditions, or under conditions not reasonably foreseeable to seller, and buyer assumes the  
risk of any such use.

DOCUMENT AVAILABLE MANUFACTURED BY: MAGNA CORPORATION, 11808 South Bloomfield Ave., Santa Fe Springs, California 90243

### INTERMITTENT OR SLUG METHOD

For treatment of enhanced oil and gas recovery injection  
Magnacide 4551 (4.2-16.8 gallons or 33.7-134.7 pounds Magnacide  
ment 1-5 times per week or as needed to establish control. S  
(1.26-8.4 gallons or 10.1-67.4 pounds Magnacide 4551 per 1000  
maintain control. For treatment of drilling, fracturing and cor  
required, where noticeably fouled, add 300-3000 ppm Magnacide  
Magnacide 4551 per 1000 barrels of injection fluid). Repeat treat  
control. Subsequently, treat with 30-2000 ppm Magnacide 4551  
4551 per 1000 barrels of injection fluid). Repeat treatment as

### CONTINUOUS FEED METHOD

For treatment of enhanced oil and gas recovery injection fluid  
Magnacide 4551 (4.2-16.8 gallons or 33.7-134.7 pounds Magnacide  
the desired degree of control is established. Subsequently, treat  
or 10.1-67.4 pounds Magnacide 4551 per 1000 barrels of wa

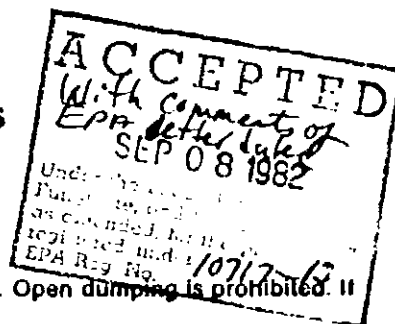
NOTE: Addition of Magnacide 4551 should be made at a p  
Magnacide 4551 weighs 8.02 lbs per gallon  
Freeze stable to minus 45°F (-43°C)

### STATEMENT OF PRACTICE CALL A PHYSICIAN IMMEDIATELY IN ALL CASES

IF SWALLOWED: Dilute with two glasses of water. Call a physician  
not give anything by mouth to an unconscious person.  
methanol (methyl alcohol).  
IF INHALED: Remove immediately to fresh air. If not breathing,  
difficult, give oxygen. Call a physician.  
IF ON SKIN: Wash thoroughly with soap and water. Remove  
IF IN EYES: Flush with plenty of water for at least 15 minutes.

### NOTE TO PHYSICIAN

Material is corrosive and may cause mucosal damage. Carefully  
methanol. Measures against circulatory shock, respiratory distress.



# MAGNACIDE<sup>TM</sup> 4551

Est. No. 10707-TX-1

EPA Reg. No. 10707-13

## FIELD MICROBIOCIDES

### INGREDIENTS

methyl-4-isothiazolin-3-one	1.15%
isothiazolin-3-one	0.35%
INGREDIENTS	98.50%
TOTAL	100.00%

KEEP OUT OF REACH OF CHILDREN

## DANGER

### CAUTIONARY STATEMENTS TO HUMANS AND DOMESTIC ANIMALS

CAUSE BLINDNESS. CAUSES EYE DAMAGE AND SKIN  
VAPOR HARMFUL IF INHALED. FATAL IF SWALLOWED

Wear goggles or face shield and rubber gloves when handling. Avoid  
food. Do not take internally. Wash thoroughly with soap and  
water. Remove contaminated clothing and wash before reuse.

### ENVIRONMENTAL HAZARDS

Do not discharge into lakes, streams, ponds or public waters unless in  
contact with your Regional Office of the Environmental Protection

at or disposal of wastes

### CHEMICAL HAZARDS

Do not use near open flame.

### STORAGE AND DISPOSAL

Do not feed by storage or disposal. Open dumping is prohibited. If

Used or chemically reprocessed should be disposed of in a  
safe place away from water supplies. Triple rinse (or equivalent) all  
containers or conditioning (for plastic containers dispose in an  
safe place. Consult federal, state  
procedures.

Warranted to its chemical description and is reasonably fit for the  
use with directions under normal conditions of use, but neither  
guarantee or fitness for a particular purpose, express or implied,  
shall be made in a manner other than as directed by label instructions,  
and buyer assumes the

## DIRECTIONS FOR USE GENERAL CLASSIFICATION

It is a violation of Federal law to use this product in a manner inconsistent with its labeling.

For the control of slime forming and sulfate-reducing bacteria in oil and gas field water systems including enhanced  
recovery injection fluids, drilling, fracturing and completion fluids, add 30-3000 ppm Magnacide 4551 depending  
on the severity of the contamination

### INTERMITTENT OR SLUG METHOD

For treatment of enhanced oil and gas recovery injection fluids, where noticeably fouled, add 100-400 ppm  
Magnacide 4551 (4.2-16.8 gallons or 33.7-134.7 pounds Magnacide 4551 per 1000 barrels of water). Repeat treat-  
ment 1-5 times per week or as needed to establish control. Subsequently, treat with 30-200 ppm Magnacide 4551  
(1.26-8.4 gallons or 10.1-67.4 pounds Magnacide 4551 per 1000 barrels of water). Repeat treatment as needed to  
maintain control. For treatment of drilling, fracturing and completion fluids, where higher concentrations may be  
required, where noticeably fouled, add 300-3000 ppm Magnacide 4551 (12.6-126.0 gallons or 101.1-1010.5 pounds  
Magnacide 4551 per 1000 barrels of injection fluid). Repeat treatment 1-5 times per week or as needed to establish  
control. Subsequently, treat with 30-2000 ppm Magnacide 4551 (1.26-84.0 gallons or 10.1-673.7 pounds Magnacide  
4551 per 1000 barrels of injection fluid). Repeat treatment as needed to maintain control.

### CONTINUOUS FEED METHOD

For treatment of enhanced oil and gas recovery injection fluids, where noticeably fouled, add 100-400 ppm Magna-  
cide 4551 (4.2-16.8 gallons or 33.7-134.7 pounds Magnacide 4551 per 1000 barrels of water) continuously until  
the desired degree of control is established. Subsequently, treat with 30-200 ppm Magnacide 4551 (1.26-8.4 gallons  
or 10.1-67.4 pounds Magnacide 4551 per 1000 barrels of water) continuously or as needed to maintain control.

NOTE: Addition of Magnacide 4551 should be made at a point in the system where it will be uniformly mixed

Magnacide 4551 weighs 8.02 lbs. per gallon  
Freeze stable to minus 45°F (-43°C)

### STATEMENT OF PRACTICAL TREATMENT

#### CALL A PHYSICIAN IMMEDIATELY IN ALL CASES OF SUSPECTED POISONING

IF SWALLOWED: Dilute with two glasses of water. Call a physician immediately. See NOTE TO PHYSICIAN. Do  
not give anything by mouth to an unconscious person. Material is corrosive and contains  
methanol (methyl alcohol)

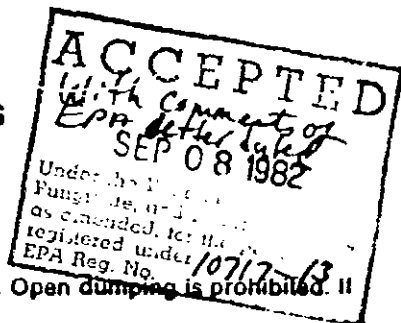
IF INHALED: Remove immediately to fresh air. If not breathing, apply artificial respiration. If breathing is  
difficult, give oxygen. Call a physician.

IF ON SKIN: Wash thoroughly with soap and water. Remove and wash contaminated clothing before reuse.

IF IN EYES: Flush with plenty of water for at least 15 minutes. Call a physician.

### NOTE TO PHYSICIANS

Material is corrosive and may cause mucosal damage. Careful gastric lavage may be indicated for toxic effects of  
methanol. Measures against circulatory shock, respiratory depression, and convulsions may be needed.



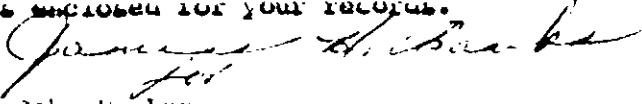
FACTURED BY: MAGNA CORPORATION, 11808 South Bloomfield Ave., Santa Fe Springs, California 90670

BEST DOCUMENT AVAILABLE

-2-

If these conditions are not complied with, the registration will be subject to cancellation in accordance with FIFRA Sec. 6(a). Your release for shipment of the product constitutes acceptance of these conditions.

A stamped copy of the label is enclosed for your records.



John H. Lee  
Product Manager (31)  
Disinfectants Branch  
Registration Division (TS-767)

Enclosure

E