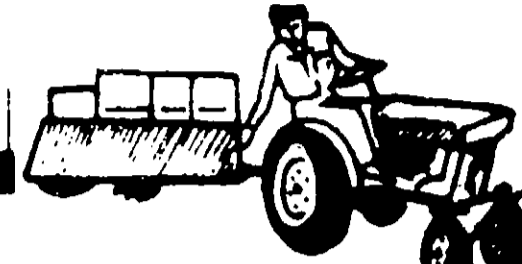


To control WHITE GRUBS (larvae of Japanese Beetle and European Chafer), use 2-4 lbs. per 1,000 sq. ft. Apply the granules uniformly over the area treated followed immediately by thorough watering to wash the insecticide into the turf. For best results, treat when grubs are young and actively feeding near the soil surface, usually during late July and August. Consult your local agricultural extension service specialist for proper time to treat in your area.



# LAWN - A - MAGIC

## 'PERMA-KILL'

For Professional Use by LAWN-A-MAT Dealers

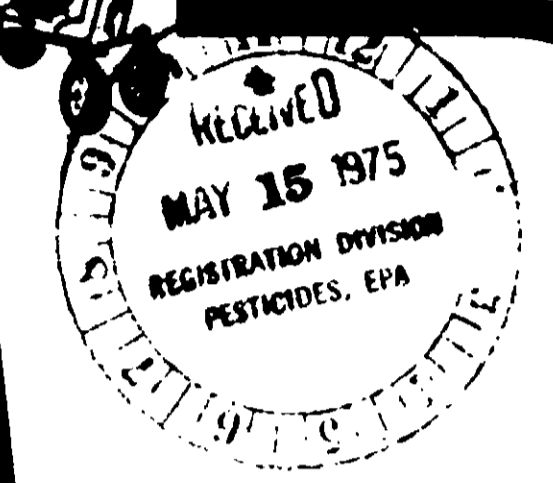
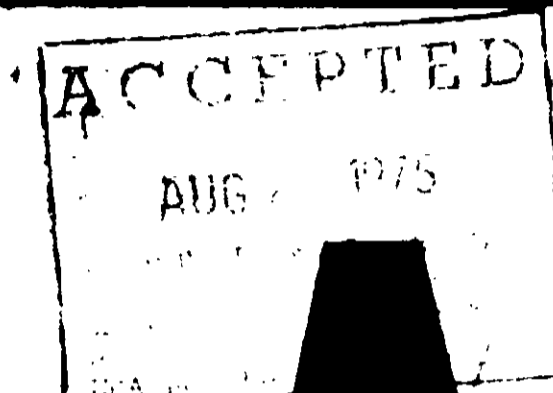
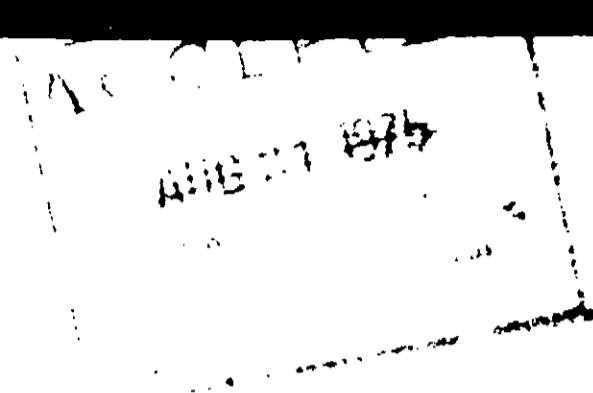
LAWN-A-MAGIC "PERMA-KILL" is for the control of Chinch Bugs and Sod Webworms (Lawn Moths). Apply evenly at the rate of 1 lb. per 1,000 square feet of Lawn area. After application, water lawn using 30 gallons of water per 1,000 square feet.

**CAUTION:** KEEP OUT OF REACH OF CHILDREN AND ANIMALS

Avoid contact with skin, eyes or clothing. Flush contaminated areas with plenty of water and get medical attention if irritation persists. Wash thoroughly after handling. Wash contaminated clothing before re-use. Avoid breathing dust. Keep children and pets off treated areas until this material is washed into the ground and grass is dry. Keep away from food, feedstuffs and domestic water supplies.

**NOTE TO PHYSICIAN:** Active ingredient is a cholinesterase inhibitor. Treat symptomatically. Atropine is antidote.

This product is toxic to fish, birds and other wildlife. Keep out of lakes,



Harmful if swallowed. Avoid contact with skin, eyes or clothing. Flush contaminated eyes with plenty of water and get medical attention if irritation persists. Wash thoroughly after handling. Wash contaminated clothing before re-use. Avoid breathing of dust. Keep children and pets off treated areas until this material is washed into the soil and grass is dry. Keep away from food, feedstuffs and domestic water supplies.

**ANTIDOTE (ANTHELMINTIC):** Active ingredient is a cholinesterase inhibitor. Treat with physostigmine. Atropine is antidote.

This product is toxic to fish, birds and other wildlife. Keep out of lakes, streams or ponds. Do not apply when weather conditions favor drift from the treated area. Do not contaminate water by cleaning of equipment or disposal of wastes. This product is highly toxic to bees exposed to direct treatment or residues on crops. Protective information may be obtained from your Cooperative Agricultural Extension Service. Apply this product only as specified on this label.

Dispose of empty container and wastes by burning or burying in non croplands away from domestic water supplies.

**ACTIVE INGREDIENTS:**

Chlorpyrifos [0,0-diethyl 0 (3,5,6 trichloro-2-pyridyl)-phosphorothioate] . . . . . 2.32%

Aromatic petroleum derivative solvent . . . . . 1.26%

**INERT INGREDIENTS** . . . . . 96.42%

100.00%

Net Weight  
25 lbs.

TREATS 25,000 SQUARE FEET

E. P. A. Reg. No. 10711-4

SPREADER SETTING NO. 3

E. P. A. Est. 572-NJ-2

All the nutrients and controls your lawn needs 4 times a year plus FREE analysis...FREE delivery...FREE application

**PROVEN ON OVER A MILLION LAWNS COAST TO COAST**



Net Weight  
25 lbs.

TREATS 25,000 SQUARE FEET

E. P. A. Reg. No. 10711-4  
E. P. A. Est. 572-NJ-2

SPREADER SETTING NO. 3

All the nutrients and controls your lawn needs 4 times a year plus FREE analysis...FREE delivery...FREE application  
**PROVEN ON OVER A MILLION LAWNS COAST TO COAST**



COMMERCIAL SIZE

Trade Mark LAWN-A-MAGIC Reg. U.S. Pat. Office

**Lawn-a-mat** 

"Greenskeeper for America's homeowner." America's FIRST and LARGEST producer of lawn products,  
delivered and applied to the homeowner's lawn.

*Manufactured for*

**LAWN-A-MAT CHEMICAL & EQUIPMENT CORP.**

153 JEFFERSON AVENUE, MINEOLA, N. Y. 11501

COPYRIGHT © 1972, LAWN-A-MAT CHEMICAL & EQUIPMENT CORP.