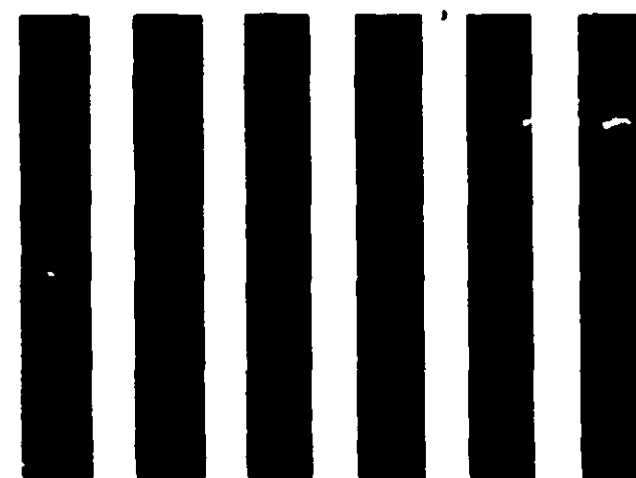


10659-52  
**ACCEPTED**  
 JUN 13 1973  
 UNDER THE FEDERAL PESTICIDE  
 FUNGICIDE AND RODENTICIDE ACT  
 FOR ECONOMIC POISON REG. STA-  
 TED UNDER NO. 124.73 SUBJECT  
 TO ATTACHED CONDITIONS.



**20 MULE TEAM<sup>®</sup>**  
**BOROCIL<sup>®</sup> IV**

**A GRANULAR GRASS AND  
 WEED KILLER—FOR DRY  
 OR SPRAY APPLICATION**

**NONSELECTIVE**

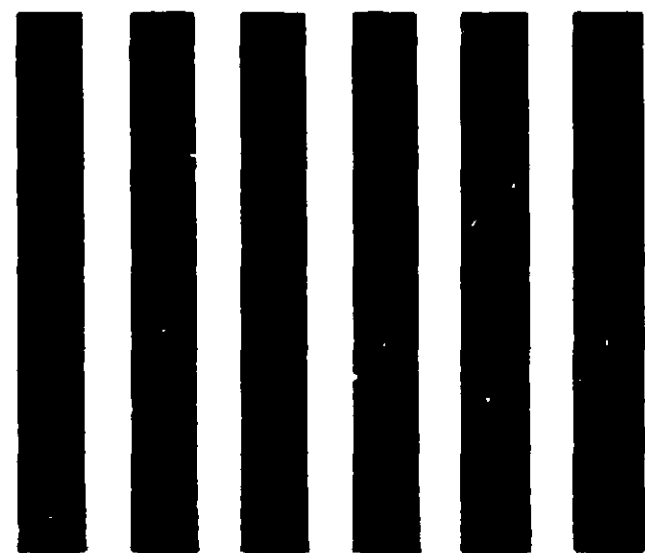
<b>ACTIVE INGREDIENTS:</b>	
Sodium Metaborate Tetrahydrate (Na <sub>2</sub> B <sub>4</sub> O <sub>7</sub> · 4H <sub>2</sub> O)	94.0%
Boron Trioxide (B <sub>2</sub> O <sub>3</sub> ) Equivalent	32.0%
Bromacil (5-bromo-3-sec- butyl-6-methyluracil)	4.0%
<b>INERT INGREDIENTS</b>	2.0%

USDA Reg. No. 1674-93  
 U.S. Patent Nos. 3227541 and 3464810

**CAUTION**

**KEEP OUT OF REACH OF CHILDREN**  
 Avoid contamination of feed and foodstuffs. Do not  
 leave container where children or animals may take  
 orally. Harmful if swallowed. May cause irritation  
 of eyes, nose, throat and skin. Avoid breathing spray  
 mist. Avoid contact with skin and clothing. Do not  
 store in direct contact with ground or concrete floors.  
 Do not reuse container. Destroy when empty.

**US BORAX**  
 LOS ANGELES • NEW YORK



BOROCIL IV is designed for use on noncropped land where control of all vegetation is desired. BOROCIL IV is effective on annual and perennial broadleaved weeds, and is particularly effective on grasses. The chemical becomes effective after being carried into the root zone of the soil by rainfall or irrigation water following application. Therefore, an interval delay between treatment and evidence of toxicity may be expected. Best time for treatment is before or during the period of active growth of the vegetation, but do not apply when ground is frozen. Apply on railroad rights-of-way, highways, fence lines, storage yards, parking lots and industrial sites.

**METHOD OF APPLICATION**—BOROCIL IV is designed for spray or dry application. Conventional Herbicide Spreaders may be used if they can be accurately adjusted to the desired low rates of application. The hand-operated PCB Spreader is especially designed for use where power equipment is not desired. Uniform distribution and even spread over treated area are essential for best results.

**RATES OF APPLICATION**—Ranges in rates of application are given below. Generally the lower rates are adequate for application before or during the early stages of seasonal growth. The higher rates may be desired for use on maturing vegetation, on highly absorptive soils (high organic matter or carbon content) or when an extended period of residual control is desired on porous soils under conditions of high rainfall or heavy irrigation.

**ANNUAL GRASSES AND WEEDS**—For dry application, apply 100 to 200 lbs. BOROCIL IV per acre (1/4 to 1/2 lb. per 100 sq. ft.) for most grasses and weeds, such as cheat (annual brome), foxtail, wild oats, crabgrass, pigweed, lamb's-quarter, cocklebur, and purslane. For spray application add 1/4 to 1/2 lb. of BOROCIL IV to sufficient water to cover 100 sq. ft.

**PERENNIAL GRASSES**—For dry application, apply 200 to 400 lbs. BOROCIL IV per acre (1/2 to 1 lb. per 100 sq. ft.) to control perennial grasses such as quackgrass, bluegrass, smooth brome and bluestems. The high rate of application is suggested for persistent species such as Johnson grass, Bermuda grass, Dallis grass and nutgrass. For spray application, add 1/2 to 1 lb. BOROCIL IV to sufficient water to cover 100 sq. ft.

**PERENNIAL BROADLEAF WEEDS**—For dry application, apply 200 to 400 lbs. per acre (1/2 to 1 lb. per 100 sq. ft.) to control such weeds as dock, wild carrot, sweet clover, sheep sorrel, dandelion and plantain. For resistant species such as bouncing Bet, spurge, goldenrod, asters, daisies, and dogbane, the higher rates are suggested. For spray application, add 1/2 to 1 lb. BOROCIL IV to sufficient water to cover 100 sq. ft.

**IMPORTANT**

This material is not selective in action and may be toxic to all types of vegetation and may render the entire treated area totally or partially unproductive for one or more years. Care should be taken to confine the use or application to the particular area intended to be treated and to avoid its contact with lawns, trees, shrubs, crops and other desirable plants which are not intended to be destroyed or injured. This includes precautions in treating areas which may be overlaid by roots of adjacent valuable growths. Careless application of this material, or washing by water runoff, to areas where desirable plants are growing or which will be used for later planting, may result in injury to desirable plants. Do not contaminate domestic or irrigation water. Keep livestock off treated areas. Wash clothing and equipment after application. Mechanical equipment should be thoroughly cleaned after use.

**NOTICE**

Because of many varying conditions affecting use and application, such as location, seasonal weather, soil composition and type of vegetation, manufacturer warns buyer that these and other conditions may impair or vary the results or effects of the use of this product. In any event, complete elimination of weeds is not guaranteed. It is advisable to consult your State Extension Service or Agricultural Experimental Station weed specialists on specific problems. Neither manufacturer nor seller shall be liable in respect to any injury or damage suffered by reason of the use of this product for a purpose not indicated by the label or when used contrary to the directions or instructions hereon nor with respect to breach of any warranty not expressly specified herein. Buyer accepts this material subject to these terms, and assumes all risk of usage and handling except when used or handled in accordance with this label. Neither manufacturer nor seller makes, and their employees and agents are not permitted to make, any representations or warranties, express or implied by law, not specifically set forth herein.

**UNITED STATES BORAX & CHEMICAL CORPORATION**

NET: 50 LBS.  
20 MULE TEAM.

# MONODOR-CHLORATE. GRANULAR

U. S. Patent No. 2,798,804  
Other Patents Pending

**NONSELECTIVE**  
**WEED AND GRASS KILLER**  
APPLY DRY OR AS A SPRAY FOR  
GENERAL VEGETATION  
PREPAVING TREATMENT

FOR USE AS A COTTON DEPOLIANT-REFER TO OUR BULLETIN M-C G-D2

ACTIVE INGREDIENTS:	
Sodium Metaborate Tetrahydrate ( $\text{Na}_2\text{B}_4\text{O}_7 \cdot 4\text{H}_2\text{O}$ ).....	68.0%
[Boron Trioxide ( $\text{B}_2\text{O}_3$ ) Equivalent.....]	23.3%
Sodium Chlorate ( $\text{NaClO}_3$ ) .....	30.0%
INERT INGREDIENTS .....	2.0%

11-4-71  
1624-103

<sup>1</sup> EPA REG. NO. 1624-103

## CAUTION

KEEP OUT OF REACH OF CHILDREN

Do not leave container where children or animals may take internally. Harmful if swallowed. Avoid contact with skin and clothing. Avoid contamination of feed and feedstuffs. Do not store in direct contact with ground or concrete floors.

10659-53

SEE BACK PANEL FOR OTHER CAUTIONS & DIRECTIONS FOR USE.



# U.S. BORAX

LOS ANGELES • NEW YORK

# MONOBOR - CHLORATE. Granular

Nonselective

Weed and Grass Killer

Apply Dry or as a Spray

## DIRECTIONS FOR USE

**APPLICATION:** For all uses uniform application is essential. MONOBOR-CHLORATE Granular may be applied either as a dry granular material or as a water spray. Both dry and spray applications become effective as soil treatments following rainfall or irrigation.

For DRY application conventional herbicide spreaders may be used. The hand operated PCB Spreader is especially recommended for use where power equipment is not desired.

For SPRAY application equipment with mechanical agitation (preferably vigorous enough to keep the granules suspended in the water while dissolving) is recommended. First, add water to the spray tank. Then, with agitator operating, add the MONOBOR-CHLORATE Granular. With good agitation up to 3 pounds MONOBOR-CHLORATE Granular per gallon of water may be used. Continue agitation until the herbicide is completely dissolved, and preferably until spray tank is empty. Necessary precautions should be taken to keep undissolved material out of pumps and lines.

**GENERAL VEGETATION CONTROL:** MONOBOR-CHLORATE Granular applied as a spray will give quick knock-down of vegetation and residual control of annual broad-leaved weeds and grasses on areas such as parking lots, fence lines, highway and railroad sites, and industrial yards. For SPRAY applications add ½ to 2 pounds of MONOBOR-CHLORATE Granular to sufficient water to cover 100 square feet. Apply as a contact spray thoroughly wetting all parts of the plants, particularly the growing tips. ½ to 1 gallon per 100 square feet is usually adequate for young growth up to 6 inches high. The higher rates may be necessary to insure thorough coverage of heavy vegetation or to provide extended residual control. For DRY application apply ½ to 2 pounds per 100 square feet. The lighter rates should be used only at time of weed emergence on moist soil, or when precipitation is anticipated while weeds are still young.

**PERENNIAL NOXIOUS WEEDS:** Persistent perennial weeds are most effectively treated when nearing maturity or during dormant stages in the fall. Spring applications may also be made under moderate rainfall conditions. Summer applications are recommended only where rainfall is dependable for leaching the herbicide into the soil. Apply 2 to 4 pounds per 100 square feet in the dry granular form or as a spray. On deep-rooted perennials such as bindweed, Canada thistle, Bermuda grass, and quack grass the heavier rates may be required.

**JOHNSON GRASS CONTROL:** In Noncropped Areas - MONOBOR-CHLORATE Granular is effective for control of Johnson grass, Dallis grass and other deep-rooted perennial grasses on areas such as industrial sites, roadsides, fence lines, drainage ditch banks, and railroad rights-of-way. Apply dry at 1 to 3 pounds per 100 square feet, or add 1 to 3 pounds to 1 or 2 gallons of water per 100 square feet. Johnson grass is most susceptible to MONOBOR-CHLORATE Granular after heading in late summer and into fall. Most efficient and economical control is obtained by treating during this period.

**FOR USE UNDER ASPHALT PAVING:** For use as a "preparing" residual herbicide under asphalt paving to prevent premature breakdown of asphalt paving due to weeds, an application of 2 to 4 pounds per 100 square feet to the finished subgrade is recommended. For spray treatment dissolve 1 to 2 pounds per gallon of water and apply 2 gallons per 100 square feet. For dry treatment apply in granular form. After treatment apply at least 2 gallons of water per 100 square feet to dissolve and incorporate the herbicide in the soil.

### IMPORTANT

This material is not selective in action and may be toxic to all types of vegetation and may render the entire treated area totally or partially unproductive for one or more years. Care should be taken to confine the use or application to the particular area intended to be treated and to avoid its contact with lawns, trees, shrubs, crops and other desirable plants which are not intended to be destroyed or injured. This includes precautions in treating areas which may be overlaid by roots of adjacent valuable growths. Careless application of this material, or washing by water run-off, to areas where desirable plants are growing or which will be used for later planting may result in injury to desirable plants. Do not drain or flush equipment on or near such areas.

Do not contaminate domestic or irrigation water or waters used by fish and wildlife. Wash clothing and equipment after application. Keep animals off treated areas until rainfall has leached all the herbicide into the soil. Mechanical equipment should be thoroughly cleaned after use.

### NOTICE

Because of the many varying conditions affecting use and application, such as location, seasonal weather, soil composition and type of vegetation, manufacturer warns buyer that these and other conditions may impair or vary the results or effects of the use of this product. In any event, complete elimination of weeds is not guaranteed. It is advisable to consult your State Extension Service or Agricultural Experimental Station weed specialists on specific problems. Neither manufacturer nor seller shall be liable in respect to any injury or damage suffered by reason of the use of this product for a purpose not indicated by the label or when used contrary to the directions or instructions hereon nor with respect to breach of any warranty not expressly specified herein. Buyer accepts this material subject to these terms, and assumes all risk of usage and handling except when used or handled in accordance with this label. Neither manufacturer nor seller makes, and their employees and agents are not permitted to make, any representations or warranties, express or implied by law, not specifically set forth herein.

**UNITED STATES BORAX & CHEMICAL CORPORATION**

3075 WILSHIRE BLVD.,

PLA261C

LOS ANGELES, CALIFORNIA