

PRECAUTIONARY STATEMENTS
Hazardous to Humans/Domestic Animals
CAUTION

May be harmful if swallowed, inhaled or absorbed through skin. Avoid breathing spray mist and provide adequate ventilation of area being treated. Avoid contact with skin, eyes and clothing. In case of contact immediately flush skin and eyes with plenty of water. Wash thoroughly with soap and water after handling. If poisoning occurs, get prompt medical aid.

NOTE TO PHYSICIAN: Chlorpyrifos is a cholinesterase inhibitor. Treat symptomatically. Atropine, by injection is antidote of choice. Do not apply when food processing is underway. In the home do not spray food handling surfaces.

Remove pets, birds, and cover aquariums before spraying. Do not allow children or pets to contact treated surface until spray has dried.

STATEMENT OF PRACTICAL TREATMENT

IF IN EYES: Flush with plenty of water. Get medical attention if irritation persists.

IF ON SKIN OR CLOTHING: Remove contaminated clothing. Wash skin with soap and warm water. Get medical attention if irritation persists.

IF INHALED: Remove to fresh air. If effects occur, get medical attention.

Physical Hazards: None known.

Do not use or store near heat or open flame.

Under the Federal Insecticide, Fungicide, and Rodenticide Act, this product is registered under EPA Reg. No. 10583-11



ACTIVE INGREDIENTS:

d-trans Allethrin (ally homolog of Cisena II)	0.050%
Related compounds	0.004%
n-Octyl bicycloheptene dicarboximide	0.400%
Chlorpyrifos (O,O-diethyl O-(3,5,6-trichloro-2-pyridyl) phosphorothiolate)	0.500%
Aromatic petroleum distillate	0.282%
Petroleum distillate	0.002%
INERT INGREDIENTS	99.762%

MCA 284, Insecticide Synergist

U.S. Patent No. 3,244,585 - Dow Chemical Company

KEEP OUT OF REACH OF CHILDREN

CAUTION

See Side Panel for Additional Precautionary Statements

DIRECTIONS FOR USE

It is a violation of Federal law to use this product in a manner inconsistent with its labeling.

PLEASE READ COMPLETE PRECAUTIONARY STATEMENTS AND USE DIRECTIONS BEFORE APPLYING.

The most effective pest control program a DO-IT-YOURSELFER can obtain is to use the methods developed by the Professional Exterminator. **BOOT-HILL**, when applied directly from this container using the appropriate Spray Cap - 2 hole for indoor spraying or 12 hole for outdoor spraying, will readily give professional results.

See attached label for complete use directions.

STORAGE AND DISPOSAL

STORAGE: Store in a cool, dry place away from heat or open flame.
PRODUCT DISPOSAL: Securely wrap container in several layers of paper and discard in trash.

CONTAINER DISPOSAL: Do not reuse container. Rinse thoroughly before discarding in trash.

NOTICE: Neither the Manufacturer nor Seller makes any warranty, express or implied, concerning the use, effects of, or results from use of this product, other than as indicated on this label. Buyer assumes all risks of use, storage, and handling of this material not in strict accordance with directions contained on this label.

NET CONTENTS: ONE-HALF GALLON
SHAKE WELL BEFORE USING

Manufactured by
GENERAL CONTROL COMPANY
 3334 E. Pennsylvania St.
 Tucson, AZ 85714

EPA Reg. no. 10583-11 EPA Est. no. 10583-AZ-1



Chlorpyrifos [0,0-diethyl O-(3,5,6-trichloro-2-pyridyl) phosphorothioate]
 Aromatic petroleum distillate
 Petroleum distillate
 INERT INGREDIENTS:

0.500%
 0.282%
 0.002%
 98.762%
 100.000%

BOOT-HILL

Quick Kill
 Residential Insecticide

-MGK-264, Insecticide Synergist.
 *U.S. Patent No. 3,244,586 - Dow
 Chemical Company.

USE Indoors AND Outdoors FOR QUICK KNOCKDOWN AND LONG LASTING RESIDUAL CONTROL OF ROACHES, SPIDERS, SCORPIONS, ANTS, BROWN DOG TICKS, SILVERFISH, EARWIGS AND OTHER LISTED INSECTS. DESIGNED FOR USE AT MANY SITES SUCH AS HOMES, KENNELS, COMMERCIAL BUILDINGS, WAREHOUSES, THEATRES, OFFICE BUILDINGS, SCHOOLS, MOTELS, HOTELS, RESTAURANTS AND FOOD PROCESSING FACILITIES.

ACC

DEC 3 1987

Under
 For
 GS
 149
 EPA

KEEP OUT OF REACH OF CHILDREN

CAUTION

STATEMENT OF PRACTICAL TREATMENT

IF IN EYES: Flush with plenty of water. Get medical attention if irritation persists.
 IF ON SKIN OR CLOTHING: Remove contaminated clothing. Wash skin with soap and warm water. Get medical attention if irritation persists.
 IF INHALED: Remove to fresh air if effects occur and call a Physician.
 IF SWALLOWED: Drink 1 or 2 glasses of water and induce vomiting by touching back of throat with finger. Do not induce vomiting or give anything by mouth to an unconscious person. Call a Physician.

PRECAUTIONARY STATEMENTS
HAZARDS TO HUMANS AND DOMESTIC ANIMALS
CAUTION

May be harmful if swallowed, inhaled or absorbed through skin. Avoid breathing spray mist and provide adequate ventilation of area being treated. Avoid contact with skin, eyes and clothing. In case of contact immediately flush skin and eyes with plenty of water. Wash thoroughly with soap and water after handling. If poisoning occurs, get prompt medical aid.

NOTE TO PHYSICIAN: Chlorpyrifos is a cholinesterase inhibitor. Treat symptomatically. Atropine, by injection, is antidote of choice.

Do not apply when food processing is underway. In the home do not spray food handling surfaces.

Remove pets, birds and cover aquariums before spraying. Do not allow children or pets to contact treated surface until spray has dried.

Physical Hazards

Do not use or store near heat or open flame.

STORAGE AND DISPOSAL

STORAGE: Store in a cool dry place away from heat or open flame.

PRODUCT DISPOSAL: Securely wrap container in several layers of paper and discard in trash.

CONTAINER DISPOSAL: Do not reuse container. Rinse thoroughly before discarding in trash.

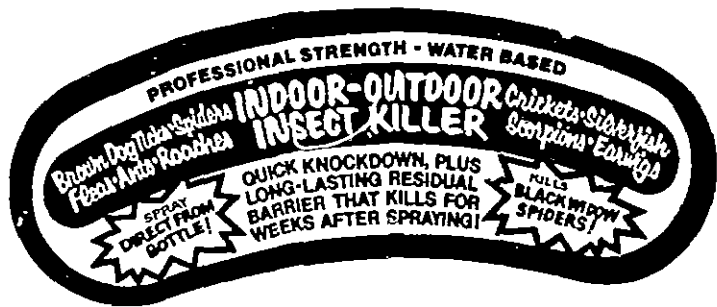
NET CONTENTS: ONE QUART
SHAKE WELL BEFORE USING

Manufactured by

GENERAL CONTROL COMPANY
3334 E. PENNSYLVANIA ST. TUCSON, AZ 85714

EPA Reg. No. 10593-11

EPA Est. No. 10583-AZ-1



DEC 6 1987

