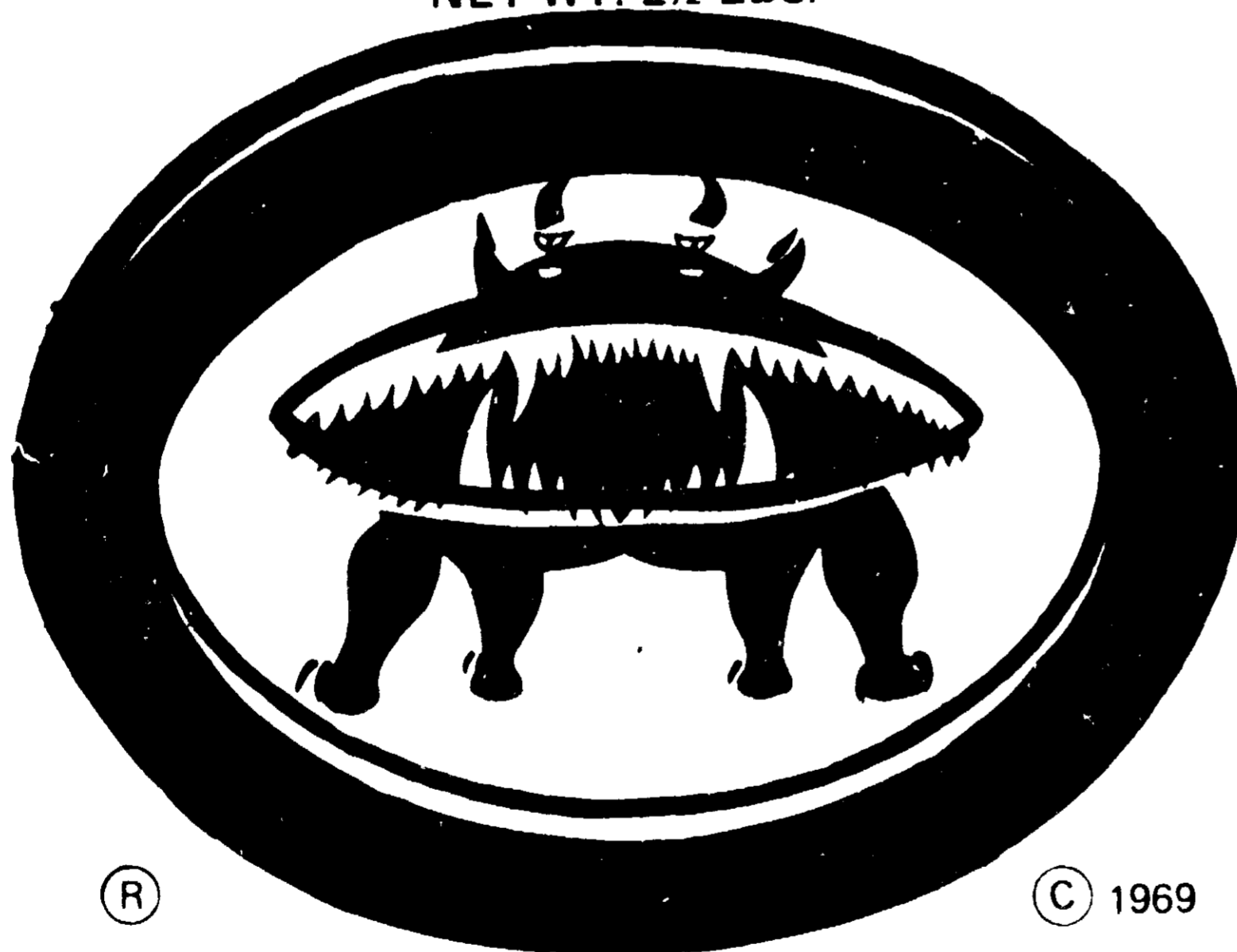


K-LAN CO. INC. BOX 5663 AMARILLO, TEX. 79107

# ROJO ROOT-RID-ER

NET WT. 2½ LBS.



®

© 1969

K-LAN CO. INC

**PREVENTS ROOTS IN SEWER LINE  
WILL NOT HARM TREES OR SHRUBS**

## CAUTION

KEEP OUT OF REACH OF CHILDREN  
ACTIVE INGREDIENT 19.92%  
INERT INGREDIENTS 80.08%  
COPPER SULPHATE PENTAHYDRATE  
USDA REG NO 10564-1

**\$2.50**

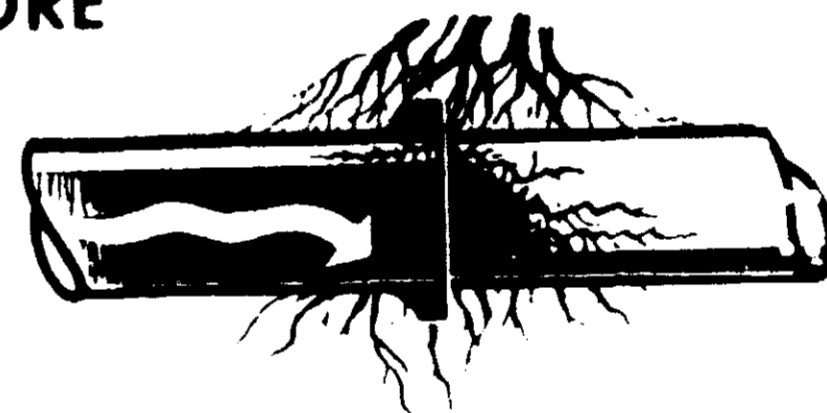
MANUFACTURED BY K-LAN COMPANY, INC.

## DIRECTIONS FOR USE

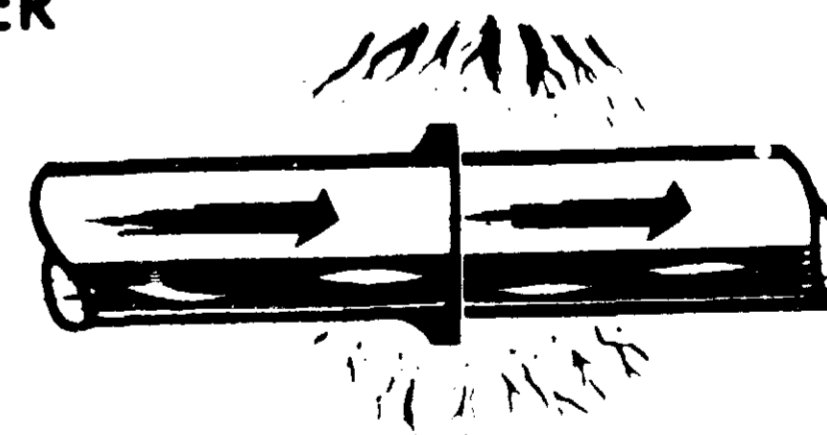
Pour one cup full of ROJO ROOT-RID-ER in commode bowl and flush. Be sure it is the last flush at night. Do this once each month.

**WILL NOT CLEAR COMPLETELY STOPPED LINE**

**BEFORE**



**AFTER**



**MONEY BACK GUARANTEE**  
If used according to directions—Money back if not satisfied

## CAUTION

Contains Copper Sulfate.

If taken internally, drink water or milk.  
**CALL PHYSICIAN IMMEDIATELY**