

50 LBS.

NET WT.

V. M. S.

INSECTICIDAL FREE CHOICE MINERAL-VITAMIN SUPPLEMENT

MEDICATED

For Continuous Self-Feeding of Cattle During the Summer for Control of Hornflies and Cattle Grubs; for Mixing in Feed to Provide a 7-Day Feeding Program for Grub Control and as an Aid in the Reduction of Cattle Lice, or a 14-Day Feeding Program for Grub Control; for beef cattle and non-lactating dairy animals only. Follow feeding directions carefully.

Pesticidally Active Ingredient:

Ronnel (O,O-dimethyl O-(2, 4, 5-trichlorophenyl) phosphorothioate) 6.0%

Pesticidally Inert Ingredients 94.0%

INGREDIENTS:

Cottonseed Meal, Corn Meal, Dried Molasses, Cane Molasses, Beet Molasses, Anise Oil, Dicalcium Phosphate, Calcium Carbonate, Magnesium Oxide, Magnesium Sulfate, Magnesium Carbonate, Salt, Sulfur, Manganese Sulfate, Yeast Culture, Soda Bicarbonate, Meat and Bone Meal, Diatomaceous earth, Glycerol monosterate, Phyrogenic silica, Mineral Oil, Cobalt Carbonate, Copper Carbonate, Cobalt Sulfate, Zinc Sulfate, Iron Oxide, Ethylene Diamine Dihydriodide, Choline Chloride and Irradiated Dried Yeast (source of Vitamin D2).

Manufactured and Guaranteed By:
V. M. S., INC.
Montgomery, Alabama 36101

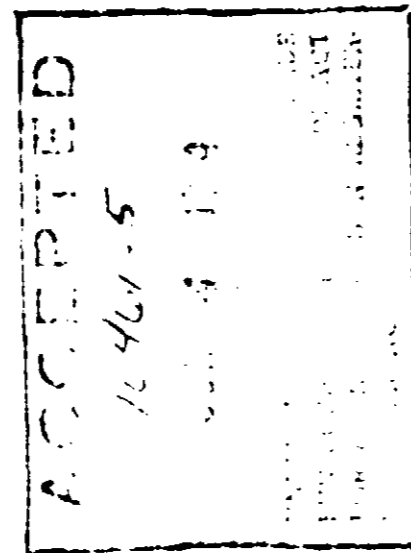
GUARANTEED ANALYSIS:

Calcium (Ca), not more than	9.60%
Calcium (Ca), not less than	8.00%
Phosphorus (P), not less than	6.00%
Iodine (I), not less than	0.03%
Salt (NaCl), not more than	21.00%
Salt (NaCl), not less than	18.00%
Magnesium (Mg), not less than	1.70%
Manganese (Mn), not less than	0.15%
Cobalt (Co), not less than	0.03%
Copper (Cu), not less than	0.02%
Vitamin D2, not less than	40,000 U.S.P. Units per lb.

WARNINGS

Use as a sole source of Ronnel. Dairy cows should be treated early in their dry period but **only** if the dry period occurs between the end of the adult heel fly season and before grubs reach the back.

Do not feed to dairy animals that will produce milk for human consumption for 10 days prior to freshening. If dairy cows or heifers freshen during feeding program, or if insecticidal mineral has not been withdrawn the required 10 days prior to freshening, milk must not be used for **fat**.



AC
FEDERAL
FOR LC
1970

...and Vitamin D2).

Manufactured and Guaranteed By:
V. M. S., INC.
Montgomery, Alabama 36101

GUARANTEED ANALYSIS:

Calcium (Ca), not more than	9.60%
Calcium (Ca), not less than	8.00%
Phosphorus (P), not less than	6.00%
Iodine (I), not less than	0.03%
Salt (NaCl), not more than	21.00%
Salt (NaCl), not less than	18.00%
Magnesium (Mg), not less than	1.70%
Manganese (Mn), not less than	0.15%
Cobalt (Co), not less than	0.03%
Copper (Cu), not less than	0.02%
Vitamin D2, not less than	40,000 U.S.P. Units per lb.

WARNINGS

Use as a sole source of Ronnel.
Dairy cows should be treated early in their dry period but **only** if the dry period occurs between the end of the adult heel fly season and before grubs reach the back.

Do not feed to dairy animals that will produce milk for human consumption for 10 days prior to freshening. If dairy cows or heifers freshen during feeding program, or if insecticidal mineral has not been withdrawn the required 10 days prior to freshening, milk must not be used for food for 10 days after the last feeding of this product.

Withdraw 10 days prior to slaughter.

Do not feed to sick animals or animals under stress, such as those just shipped, dehorned, castrated, or weaned within the last 3 weeks.

Ronnel is a cholinesterase inhibitor. Do not feed this product to animals simultaneously or within a few days before or after treatment with or exposure to cholinesterase-inhibiting drugs, pesticides or chemicals. Consult a veterinarian at the first sign of adverse reaction. Atropine is an antidote.

CAUTION
KEEP OUT OF REACH OF CHILDREN

Wash hands with soap and water after handling. This material contains a cholinesterase inhibitor. Treat symptomatically. Atropine is an antidote.

This product is toxic to fish. Keep out of lakes, streams and ponds. Do not contaminate water by cleaning of equipment or disposal of wastes. Use this product only as specified on this label.

Do not reuse empty container. Destroy it by burning or burying in non-croplands away from water supplies.

Licensed under U.S. Patent No. 2,811,480

STORE IN A COOL, DRY PLACE

(SEE REVERSE SIDE FOR FEEDING DIRECTIONS)

EPA REG. NO. 10461-5

DIRECTIONS FOR CONTINUOUS SELF-FEEDING PROGRAM V.M.S. INSECTICIDAL FREE CHOICE MINERAL-VITAMIN SUPPLEMENT

When to Feed: Pasture-raised cattle start feeding V.M.S. Insecticidal Free Choice Mineral-Vitamin Supplement in the spring before flies appear. Continue feeding all summer and into the fall until cold weather restricts fly development. For grub control, feed continuously for a minimum of 75 days.

How Much to Feed: Recommended consumption of V.M.S. Insecticidal Free Choice Mineral-Vitamin Supplement containing 6% Ruminant Salt per 100 lb. of body weight per head per month.

How to Feed: Feed V.M.S. Insecticidal Free Choice Mineral-Vitamin Supplement continuously, free-choice to cattle in covered mineral-feeder troughs or boxes. Provide one mineral-feeder box or feeding space for each 15 to 20 head of cattle. Locate mineral-feeder boxes and troughs in watering areas. To encourage uniform and normal consumption, put out only a 7-day supply at one time. Keep mineral-feeder boxes and troughs clean. For added protection, each animal must eat its share of the supplement. Some animals may require an additional 7-day program after weaning for grub control.

WARNING

During continuous feeding programs, do not allow cattle to run out of V.M.S. Insecticidal Free Choice Mineral-Vitamin Supplement and do not feed any additional salt or mineral.

DIRECTIONS FOR 7-DAY OR 14-DAY FEEDING PROGRAMS

Mix V.M.S. Insecticidal Free Choice Mineral-Vitamin Supplement with grain or hay for top-dressing, or mix with the complete ration to make an insecticidal feed. Feed continuously for 7 or 14 days and make certain that all cattle have adequate feeding space. Make certain that insecticidal treatment is distributed on, or mixed into, the ration. Use a total of 0.2 lb. of V.M.S. Insecticidal Free Choice Mineral-Vitamin Supplement for each animal that is to be fed over the 7- or 14-day feeding period.

NOTE: Insecticidal Free Choice Mineral-Vitamin Supplement should be used with caution in conjunction with other insecticides.

When to Feed: Apply insecticidal treatment in season and before grubs are present. Insecticide is not effective for grub control if applied after the fly, when grubs are in the third or fourth instar. Biting of cattle lice will be prevented if applied for the 7-day program.

7 DAY TREATMENT

When to Feed:

WARNING

During continuous feeding program, do not allow cattle to run out of V.M.S. Insecticidal Free Choice Mineral-Vitamin Supplement and do not feed any additional salt or mineral.

DIRECTIONS FOR 7-DAY OR 14-DAY FEEDING PROGRAMS

Mix V.M.S. Insecticidal Free Choice Mineral-Vitamin Supplement with ground grain for top dressing, or mix with the complete ration to make an insecticidal feed. Feed continuously for 7- or 14 days and make certain that all cattle have access to adequate feeding space should be available for each animal. Make certain that insecticidal feed is evenly distributed on, or mixed into, the total ration. Provide a total of 0.2 lb. of V.M.S. Insecticidal Free Choice Mineral-Vitamin Supplement for each 100 lb. body weight to be fed over the 7- or 14-day period.

NOTE: Insecticidal Free Choice Mineral-Vitamin Supplement should be used within 4 weeks of mixing.

When to Feed: After the peak adult fly season and before grubs reach the 3rd stage. Ronnel is not effective for grub control if used during the life cycle, when grubs are in the 1st or 2nd stage. Reduction of cattle lice will be obtained if Ronnel is fed for the 7-day program.

7-DAY TREATMENT

When to Feed:

Southern areas: September through September.
Northern areas: September through October.

How to Feed: Mix 0.2 lb. of V.M.S. Insecticidal Free Choice Mineral-Vitamin Supplement containing 6% Ronnel with 100 lb. of feed to produce an insecticidal feed. Prepare and feed for the 7-day feeding program. Feed 0.2 lb. of insecticidal feed per 100 lb. body weight daily for 7 continuous days.

14-DAY TREATMENT

When to Feed:

Southern areas: September through September.
Northern areas: September through December.

How to Feed: Mix 0.4 lb. of V.M.S. Insecticidal Free Choice Mineral-Vitamin Supplement containing 6% Ronnel with 200 lb. of feed to produce an insecticidal feed. Prepare and feed for the 14-day feeding program. Feed 0.2 lb. of insecticidal feed per 100 lb. body weight daily for 14 continuous days.

