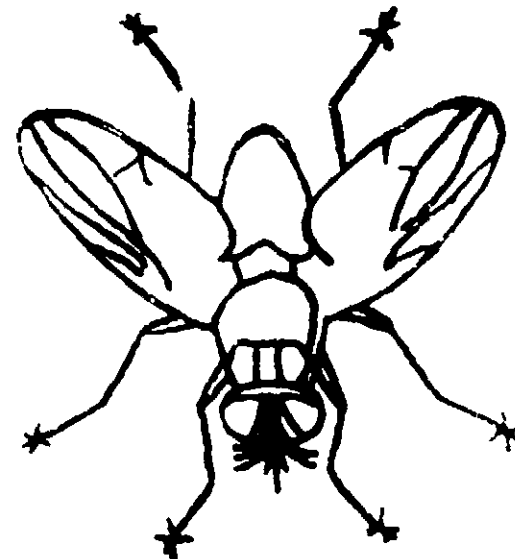


THE ULTIMATE IN MINERAL-VITAMIN NUTRITION  
MANUFACTURING  
**FOR LIVESTOCK**

33 1/2 LBS. (NET) WEIGHT

# FENO-FLY No. 2 BLOCK MEDICATED



(FOR RUMINANTS ONLY)

Prevents the breeding of horn flies and face flies in the pasture of treated cattle, aids in the prevention of stomach worms (*Haemonchus* spp.), hookworm (*Parastomum*), and nodular worms (*Oesophagostomum*). Aids in the prevention of foot rot in cattle and soft tissue lumpy jaw in cattle.

**ACTIVE INGREDIENT:**  
Phenothiazine ..... 1.250%  
**INERT INGREDIENTS:** ..... 98.750%  
Total ..... 100.000%  
Resists only to ingredients which are neither flyicides nor drugs.  
**OTHER ACTIVE INGREDIENT:**  
Ethylene Diamine Dihydrochloride ..... 0.035%

**INGREDIENTS:**  
Cottonseed meal, dehydrated alfalfa meal, corn meal, urea salt, dried molasses, dicalcium phosphate, mono calcium phosphate, magnesium carbonate, ethylene diamine dihydrochloride, cobalt sulfate, cobalt carbonate, copper carbonate, zinc sulfate, magnesium sulfate, magnesium oxide, manganese sulfate, iron oxide, calcium carbonate, sodium bicarbonate, vitamin, dried corn fermentation solubles, meat and bone meal, yeast culture, niacin, riboflavin, choline, calcium carbonate, methionine supplement, and other ingredients. Source of Vitamin D<sub>3</sub>, Vitamin B<sub>12</sub> supplement, Vitamin A palmitate, anise oil and cane molasses.

Manufactured For and Guaranteed By:  
**V. M. S., INC.**  
Montgomery, Alabama 36101

17-46-1-4

(Bunostomum), and hookworms (Oesophagostomum). Aids in the prevention of foot rot in cattle and soft tissue lumpy jaw in cattle.

**ACTIVE INGREDIENT:**

Phenothiazine \_\_\_\_\_ 1.00%

**INERT INGREDIENTS:** \_\_\_\_\_ 98.750%

Total \_\_\_\_\_ 100.000%

\*Refers only to ingredients which are neither insecticides nor drugs.

**OTHER ACTIVE INGREDIENT:**

Ethylene Diamine Dihydriodide \_\_\_\_\_ 0.035%

**INGREDIENTS:**

Cottonseed meal, dehydrated alfalfa meal, corn meal, urea, salt, dried molasses, dicalcium phosphate, monocalcium phosphate, magnesium carbonate, ethylene diamine dihydriodide, cobalt sulfate, cobalt carbonate, copper carbonate, zinc sulfate, magnesium sulfate, magnesium oxide, manganese sulfate, iron oxide, calcium carbonate, sodium bicarbonate, sulfur, dried corn fermentation solubles, meat and bone meal, yeast culture, niacin, choline chloride, calcium pantothenate, riboflavin supplement, irradiated dried yeast (source of Vitamin D-2), Vitamin B-12 supplement, Vitamin A palmitate, anise oil and cane molasses.

Manufactured For and Guaranteed By:

V. M. S., INC.

Montgomery, Alabama 36101

**GUARANTEED ANALYSIS:**

Crude protein, not less than \_\_\_\_\_ 16.00%

(includes not more than 5.00% equivalent protein from non-protein nitrogen)

Crude fat, not less than \_\_\_\_\_ 1.00%

Crude fiber, not more than \_\_\_\_\_ 7.00%

Calcium (Ca), not more than \_\_\_\_\_ 6.50%

Calcium (Ca), not less than \_\_\_\_\_ 5.50%

Phosphorus (P), not less than \_\_\_\_\_ 1.00%

Iodine (I), not less than \_\_\_\_\_ 0.028%

Salt (NaCl), not more than \_\_\_\_\_ 21.00%

Salt (NaCl), not less than \_\_\_\_\_ 18.00%

Magnesium (Mg), not less than \_\_\_\_\_ 1.50%

Asa, not more than \_\_\_\_\_ 50.00%

Vitamin D-2, not less than 7,000 U.S.P. Units per Lb

**FEEDING DIRECTIONS:**

Self feed continuously as the sole source of salt so as to provide  $\frac{3}{4}$  ounce per 100 pounds of body weight per head daily. Do not offer any other mineral or salt mixtures. The above daily intake levels will furnish the proper medication to support drug claim. **WARNING:** Do not feed this medicated block to lactating dairy animals. Occasional sensitivity to phenothiazine has been reported in cattle.

**WARNING**

**KEEP OUT OF REACH OF CHILDREN**

**NOTE:** For maximum protection against horn flies and face flies, it is recommended that cattle be sprayed once when first starting on a continuous V.M.S. Feno-Fly program. V.M.S. Feno-Fly prevents the breeding of horn flies and face flies in the manure but does not effect any existing adult fly problem. Be sure and supply ample blocks at all times—at least one block for every 10 to 12 head. Since face flies migrate from farm to farm, it is essential that the larvicide program be carried out on an area basis to assist in the reduction of the adult face fly population.

"Consult your veterinarian for assistance in the diagnosis, treatment, and control of parasitism."

EPA EST #10461 A1 1

EPA REG #10461 4