



UNDER THE FEDERAL INSECTICIDE  
 FUNGICIDE AND RODENTICIDE ACT  
 FOR ECONOMIC PESTICIDE REGISTERED  
 EO UNDER NO. 100-1-1  
 SUBJECT  
 TO ATTACHED COMMENTS.

33 1/2 LBS. NET WEIGHT  
 "Three Blocks Equal 100 Pounds"  
**KATTLE-KING (S.E.)**

**BLOCK  
 ANTI-FLY  
 WEREGATED**

(For Domestic Only)

Presents the breeding of horn flies and eye flies in the  
 manner of treated cattle, sheep and swine. The protection of  
 stomach insects (botulism, etc.) and the prevention of  
 stomach worms (Ostertagia spp.), habronema, (Gastero-  
 phytes), and genital lesions (Oxyuris equi). Also  
 in the prevention of foot rot in cattle and pig blisters  
 in the prevention of cattle and pig blisters.  
 In the prevention of eye flies, genital lesions and  
 in the prevention of eye flies, genital lesions and  
 in the prevention of eye flies, genital lesions and

**ACTIVE INGREDIENTS:**  
 Permethrin (6-8 micron particle size) 1.250%  
**INERT INGREDIENTS:** 98.750%  
 Total 100.000%  
 \*Batters only to ingredients which are neither insecticides  
 or drugs.  
 (Other) Drug Active Ingredients:  
 Ethylene Diamine Dihydrochloride 0.035%  
**INGREDIENTS**

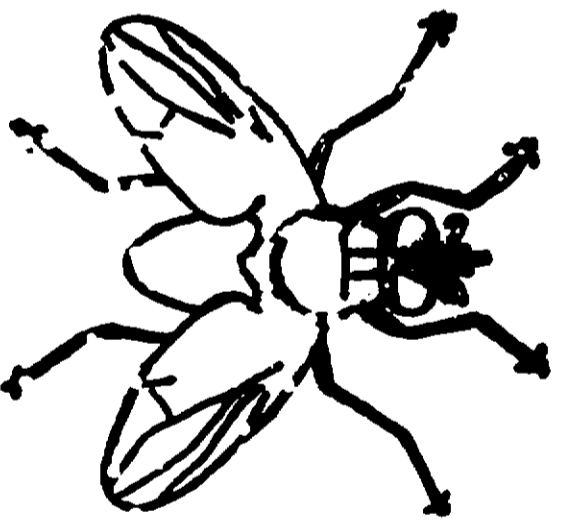
Cottonseed meal, soybean meal, dehydrated alfalfa meal,  
 corn meal, meat and bone meal, urea, dicalcium phos-  
 phate, salt, dried molasses, succinylated phosphite,  
 monocalcium phosphate, magnesium carbonate, cane  
 molasses, calcium sulfate, cobalt carbonate, copper carbo-  
 nate, ethylene diamine dihydrochloride, zinc sulfate, mag-  
 nesium sulfide, potassium oxide, magnesium oxide, hy-  
 peroxide, sodium bicarbonate, sulfur, disodium phosphate,  
 dried cane fermentation solubles, yeast culture, alcohol,  
 Vitamin B12 supplement, calcium chloride, calcium parae-  
 theinate, riboflavin supplement, zinc oxide, inactivated dried  
 yeast (source of Vitamin B1), and ethanol A palmitate.  
 Formulated by V. M. S. INC.  
 Montgomery, Alabama

**ANALYZED ANALYSIS:**

**Block Analysis:** 33 1/2 LBS. NET WEIGHT  
 (Total weight of 100 lbs. net weight)

Permethrin (6-8 micron particle size)	1.250%
Ethylene diamine dihydrochloride	0.035%
Cottonseed meal	21.000%
Soybean meal	10.000%
Dehydrated alfalfa meal	10.000%
Corn meal	10.000%
Meat and bone meal	10.000%
Urea	10.000%
Dicalcium phosphate	10.000%
Salt	10.000%
Dried molasses	10.000%
Succinylated phosphite	10.000%
Monocalcium phosphate	10.000%
Cane molasses	10.000%
Calcium sulfate	10.000%
Cobalt carbonate	10.000%
Copper carbonate	10.000%
Ethylene diamine dihydrochloride	10.000%
Zinc sulfate	10.000%
Magnesium sulfide	10.000%
Potassium oxide	10.000%
Sodium bicarbonate	10.000%
Sulfur	10.000%
Disodium phosphate	10.000%
Dried cane fermentation solubles	10.000%
Yeast culture	10.000%
Alcohol	10.000%
Vitamin B12 supplement	10.000%
Calcium chloride	10.000%
Calcium parathionate	10.000%
Riboflavin supplement	10.000%
Zinc oxide	10.000%
Inactivated dried yeast (source of Vitamin B1)	10.000%
Ethanol A palmitate	10.000%

**CAUTION**  
 Do not feed this medicated block to lactating dairy animals. Occasional sensitivity to phenothiazine has been reported in cattle.  
**KEEP OUT OF REACH OF CHILDREN**



**NOTE:** For maximum protection against horn flies and eye flies, it is recommended that cattle be sprayed once when first starting on a continuous KATTLE-KING ANTI-FLY Program. KATTLE-KING ANTI-FLY prevents the breeding of horn flies and eye flies in the manner but does not affect any existing adult fly problem. Be sure and scurry sample blocks at all times—at least one block per every 10 to 12 head. (Since one fly migrates from farm to farm, it is essential that the blockade program be carried out on an area basis to result in the reduction of the adult face fly population).  
 \*USDA Reg. No. 10461-1"