

10445-91

1-6-88

1/8

US ENVIRONMENTAL PROTECTION AGENCY OFFICE OF PESTICIDES PROGRAMS REGISTRATION DIVISION (TS-767) WASHINGTON, DC 20460  <b>NOTICE OF PESTICIDE:</b> <input checked="" type="checkbox"/> REGISTRATION <input type="checkbox"/> REREGISTRATION <i>(Under the Federal Insecticide, Fungicide,          and Rodenticide Act, as amended)</i>	EPA REGISTRATION NO. 10445-91	DATE OF ISSUANCE <b>16 JAN 1988</b>
	TERM OF ISSUANCE	
	NAME OF PESTICIDE PRODUCT METASOL CR-220	

NAME AND ADDRESS OF REGISTRANT (Include ZIP code)

Calgon Corporation  
 Calgon Center  
 P.O. Box 1346  
 Pittsburgh, PA 15230

**NOTE:** Changes in labeling formula differing in substance from that accepted in connection with this registration must be submitted to and accepted by the Registration Division prior to use of the label in commerce. In any correspondence on this product always refer to the above U.S. EPA registration number.

On the basis of information furnished by the registrant, the above named pesticide is hereby Registered/Reregistered under the Federal Insecticide, Fungicide, and Rodenticide Act.

A copy of the labeling accepted in connection with this Registration/Reregistration is returned herewith.

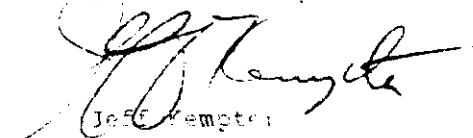
Registration is in no way to be construed as an indorsement or approval of this product by this Agency. In order to protect health and the environment, the Administrator, on his motion, may at any time suspend or cancel the registration of a pesticide in accordance with the Act. The acceptance of any name in connection with the registration of a product under this Act is not to be construed as giving the registrant a right to exclusive use of the name or to its use if it has been covered by others.

This product is conditionally registered in accordance with FIFRA section 3(c)(7)(A) provided that you:

1. Submit/cite all data required for registration/reregistration of your product under FIFRA section 3(c)(5) when the Agency requires all registrants of similar products to submit such data.
2. Add the phrase "EPA Registration No. 10445-91" to your label before you release the product for shipment.
3. Submit five (5) copies of your final printed labeling before you release the product for shipment. Refer to the A-79 enclosure for a further description of final printed labeling.

If these conditions are not complied with, the registration will be subject to cancellation in accordance with FIFRA section 6(a). Your release for shipment of the product constitutes acceptance of these conditions.

A stamped copy of the label is enclosed for your records.



Jeff Kemper  
 Product Manager (32)  
 Disinfectants Branch  
 Registration Division (TS-767C)

Enclosures

ATTACHMENT IS APPLICABLE

SIGNATURE OF APPROVING OFFICIAL	DATE
---------------------------------	------

2/8



SUBSIDIARY OF MERCK & CO., INC.

# METASOL CB-220 LIQUID SLIMICIDE

## FOR CONTROLLING BACTERIA, FUNGI, AND YEASTS IN PULP AND PAPER MILLS

### ALSO FOR THE PRESERVATION OF PIGMENT SLURRIES, ADHESIVES, COATINGS, EMULSIONS, AND HIGH VISCOSITY SUSPENSIONS AND FOR PRESERVING AQUEOUS PAINTS, METALWORKING FLUIDS, WAXES & POLISHES, AND INKS

ACTIVE INGREDIENT:  
1,2-Dibromo-2,4-Dicyanobutane . . . . . 20%  
INERT INGREDIENTS . . . . . 80%

**KEEP OUT OF THE REACH OF CHILDREN  
DANGER**

## Net Weight 441 Lbs. (200 Kg.)

**CALGON CORPORATION**  
**CALGON CENTER • PITTSBURGH, PA. 15230**

U.S. Patent No. 3,833,731, 3,873,597, 3,877,922, 3,929,858

### DIRECTIONS FOR USE

It is a violation of federal law to use this product in a manner inconsistent with its labeling. This product has been cleared for use in paper or paper products intended for use in contact with food at a maximum level of 0.005% active ingredient of dry weight fiber (21 CFR Part 176.300). The product is also FDA approved for adhesives (21 CFR Part 175.105) and for paper or paper products intended for use in contact with food (21 CFR Parts 176.170 and 176.180).

### PAPER MILLS

#### Slime Control

For control of bacterial, fungal and yeast growth in pulp, paper, and paperboard mills, add Metasol CB-220 at the rate of 0.4-2.0 lbs/ton of finished pulp or paper produced (dry basis). Addition should be made at a location that will insure uniform distribution of Metasol CB-220 in the mass of fiber and water, such as the beaters, jordan inlet or discharge, broke chests, furnish chests, save-alls, and white-water chests. It is preferable to clean a fouled machine before slimicide addition whenever possible.

#### Method of Addition

Systems with a tendency to become severely fouled or heavily fouled systems should be thoroughly cleaned and then treated with Metasol CB-220 at a range of 1.2-2.0 lbs/ton of finished paper produced until control of the problem is achieved. Maintenance levels for systems conducive to slight or moderate fouling should be treated on an intermittent basis with Metasol CB-220 at a level of 0.4- 2.0 lbs/tons of finished paper product depending upon observed conditions.

#### For Preservation of Pigment Slurries, Adhesives, Coatings, Emulsions, and High Viscosity Suspensions.

Dosage: Metasol CB-220 is effective as a preservative at use levels of 0.05-0.13% (w/w) based on the total formulation in slurries such as: starch, clay, calcium carbonate or titanium dioxide; paper coatings, high viscosity suspensions (e.g., polymers, sizing solutions); adhesives such as: polyvinyl alcohol/polyvinyl acetate based adhesives; starch-based adhesives, dextrin based adhesives. The exact amount necessary for the preservation of any given formulation will depend on the components, storage time and temperature, etc., and can be determined by actual test. For these uses and for preservation of aqueous paints, metalworking fluids, waxes, polishes and inks, consult the Product Bulletin.

ACCEPTED  
with COMMENTS  
in EPA Letter Dated:

JAN 6 1988

Under the Federal Insecticide,  
Fungicide, and Rodenticide Act  
as amended, the pesticide  
registered with EPA Reg. No.  
10445-91

**PRECAUTIONARY STATEMENTS  
HAZARDS TO HUMANS AND  
DOMESTIC ANIMALS**

**DANGER! CORROSIVE TO EYES  
CAUSES EYE DAMAGE AND SKIN IRRITATION**

Do not get in eyes, on skin, or clothing. Wear goggles or face shield and rubber gloves when handling. Harmful if swallowed. Wash contaminated clothing thoroughly before reuse. Do not contaminate feed or foodstuffs.

**STATEMENT OF PRACTICAL TREATMENT**

**First Aid:**

**EYE:** In case of contact, flush eyes with water for at least 15 minutes. Get medical attention immediately.

**SKIN:** If on skin, wash with soap and water. Call a physician if irritation persists.

**INTERNAL:** If swallowed, call a physician or Poison Control Center. Drink 1 or 2 glasses of water and induce vomiting by touching back of throat with finger or, if available, by administering syrup of ipecac. Do not induce vomiting or give anything by mouth to an unconscious person.

If inhaled, move to fresh air immediately.

**NOTICE**

Seller makes no warranty, expressed or implied, concerning the use of this product other than indicated on the label. Buyer assumes all risk of use and/or handling of this material when such use and/or handling is contrary to label instruction

EPA Registration No. 10445-

EPA Establishment No. 10445-PA-01

EPA Establishment No. 10445-NJ-01

EPA Establishment No. 10445-CA-01

EPA Establishment No. 10445-TX-01

EPA Establishment No. 10445-MO-01

EPA Establishment No. 45359-CT-01

For additional information regarding incidents involving human and environmental exposure, call (412) 777-8000 and ask for the Regulatory and Trade Affairs Department

**Method of Addition:** For preservation of slurries and high viscosity suspensions, the material should be added at a point in the processing where there will be sufficient time and agitation for good dispersion.

**ENVIRONMENTAL HAZARDS:**

Do not discharge effluent containing this active ingredient into lakes, streams, ponds, estuaries, oceans, or public waters unless this product is specifically identified and addressed in an NPDES permit. Do not discharge effluent containing this product to sewer systems without previously notifying the sewage treatment plant authority. For guidance contact your State Water Board or Regional Office of the EPA.

**STORAGE AND DISPOSAL:**

**Prohibitions** — Do not contaminate water, food or feed by storage or disposal. **Keep container tightly closed.**  
**Pesticide Disposal** — Pesticide wastes are acutely hazardous. Improper disposal of excess pesticide, spray mixture, or rinsate is a violation of Federal law. If these wastes cannot be disposed of by use according to label instructions, contact your State Pesticide or Environmental Control Agency, or the Hazardous Waste representative at the nearest EPA Regional Office for guidance.

**CONTAINER DISPOSAL:**

**Plastic Containers** — Triple rinse (or equivalent). Then offer for recycling or reconditioning, or puncture and dispose of in a sanitary landfill, by incineration or if allowed by State and local authorities, by burning. If burned, stay out of smoke.

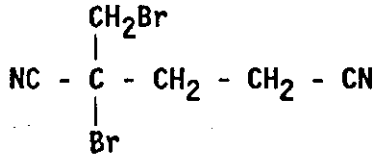
Contact your Calgon representative for directions on refilling the returnable plastic bin.

PRODUCT BULLETIN

METASOL CB-220 LIQUID SLIMICIDE

For controlling bacteria, fungi, and yeasts in pulp and paper mills; for the preservation of pigment slurries, adhesives, coatings, latex emulsions and high viscosity suspensions, and for the preservation of aqueous paints, metalworking fluids, waxes and polishes, and inks.

STRUCTURE



PROPERTIES

Active Ingredient . . . . . 20% minimum 1,2-dibromo-2,4-dicyanobutane  
 Inert Ingredient . . . . . 80% Tripropyleneglycol monomethyl ether  
 Appearance . . . . . Yellow to light amber liquid  
 Flash Point (Fisher Tag CC) . . . . . 200°F  
 Freezing Point . . . . . Store above 5°C  
 Specific Gravity . . . . . 1.063 at 20°C

RECOMMENDATIONS

The following concentrations of Metasol CB-220 Liquid Slimicide must be used to provide preservative efficiency. The concentrations are based on total formulation weight.

	<u>Effective Concentration</u> <u>By Weight of Product</u>
<u>Pulp &amp; Paper Mills</u>	
Slime Control	0.02 - 0.1%
<u>Aqueous Paints</u>	
Polyvinyl acetate	0.125 - 0.375%
Acrylic	0.125 - 0.375%
Vinyl acrylic	0.125 - 0.375%
Alkyd modified acrylic	0.125 - 0.375%
Alkyd modified vinyl acrylic	0.125 - 0.375%
<u>Adhesives</u>	
Polyvinyl acetate	0.125 - 0.75%
Styrene butadiene	0.125 - 0.375%
Polyvinyl alcohol	0.25 - 0.375%
Methyl cellulose	0.125 - 0.375%
Hydroxyethyl cellulose	0.25 - 0.375%
Acrylic	0.125 - 0.375%
Epoxy	0.05 - 0.375%
Polyester	0.05 - 0.375%
Dextrin	0.375 - 0.5%
Casein	0.5 - 0.75%

ACCEPTED  
with COMMENTS  
in EPA Letter Dated:

JAN 6 1988

Under the Federal Insecticide,  
Fungicide, and Rodenticide Act  
as amended, for the pesticide  
registered under EPA Reg. No.

10445-91

	<u>Effective Concentration</u> <u>By Weight of Product</u>
<u>Latex Emulsions</u>	
Polyvinyl acetate	0.05 - 0.25%
Acrylic	0.05 - 0.25%
Vinyl acrylic	0.05 - 0.25%
Styrene butadiene	0.05 - 0.25%
<u>Dispersed Pigments</u>	
Clay	0.05 - 0.125%
Titanium dioxide	0.05 - 0.125%
Calcium carbonate	0.05 - 0.125%
Starch	0.05 - 0.125%
<u>Joint Cements</u>	
Paste type, vinyl latex	0.25 - 0.5%
Paste type, protein	0.25 - 0.5%
<u>Metalworking Fluids</u>	
Soluble fluid	0.125 - 0.5%
Synthetic fluid	0.125 - 0.5%
Semi-synthetic fluid	0.125 - 0.5%
<u>Waxes and Polishes</u>	0.05 - 0.5%
<u>Inks</u>	0.05 - 0.375%

**DIRECTIONS FOR USE**

Pulp & Paper Mills - Metasol CB-220 should be added where uniform distribution is assured.

Aqueous Paints - Metasol CB-220 should be incorporated into the make-up water during the grind.

Latex Emulsions - Metasol CB-220 should be post-added using moderate agitation immediately following the cool-down of the emulsion prior to entering the storage tank facilities.

Dispersed Pigments - Metasol CB-220 should be post-added using moderate agitation immediately following the cool-down of the dispersed pigment prior to entering the storage tank facilities.

Adhesives & Joint Cements - Metasol CB-220 should be incorporated with agitation into the make-up water blend.

Metalworking Fluids - Metasol CB-220 can be readily incorporated into metalworking fluid formulations by addition to the concentrate coupled with moderate agitation. It should be added to the concentrate to provide 0.125-0.5% of Metasol CB-220 in the final dilute fluid.

Metasol CB-220 can also be added or metered into the final diluted cutting fluid either prior to its addition to the system or after the system has been filled. Stir thoroughly or operate the system for a sufficient time after Metasol CB-220 addition to thoroughly mix the preservative with the fluid.

Waxes and Polishes - Metasol CB-220 should be incorporated with agitation into the makeup water blend.

Inks - Metasol CB-220 should be incorporated with agitation into the makeup water blend.

#### PRECAUTIONARY STATEMENTS, HAZARDS TO HUMANS & DOMESTIC ANIMALS

**DANGER! CORROSIVE TO EYES. CAUSES EYE DAMAGE AND SKIN IRRITATION. HARMFUL IF SWALLOWED.**

Do not get in eyes, on skin, or on clothing. Wear goggles or face shield and rubber gloves when handling. Wash contaminated clothing thoroughly before reuse. Do not contaminate food or feedstuff.

**FIRST AID:** Eye - In case of contact, flush eyes with water for at least 15 minutes. Get medical attention immediately. Skin - In case of contact, wash with soap and water. If irritation persists, call a physician. Internal - If swallowed, call a physician or Poison Control Center. Drink 1 or 2 glasses of water and induce vomiting by administering ipecac syrup or by touching back of throat with finger. Do not induce vomiting or give anything by mouth to an unconscious person. If inhaled, moved to fresh air immediately.

#### STORAGE AND DISPOSAL

Prohibitions - Do not contaminate water, food or feed by storage or disposal. Keep container tightly closed.

Pesticide Disposal - Pesticide wastes are acutely hazardous. Improper disposal of excess pesticide, spray mixture, or rinsate is a violation of Federal law. If these wastes cannot be disposed of by use according to label instructions, contact your State Pesticide or Environmental Control Agency, or the Hazardous Waste representative at the nearest EPA Regional Office for guidance.

#### CONTAINER DISPOSAL

Plastic Containers - Triple rinse (or equivalent). Then offer for recycling or reconditioning, or puncture and dispose of in a sanitary landfill, by incineration or if allowed by State and local authorities, by burning. If burned, stay out of smoke.

Contact your Calgon representative for directions on refilling the returnable plastic bin.

#### ENVIRONMENTAL HAZARDS

Do not discharge effluent containing this active ingredient into lakes, streams, ponds, estuaries, ocean or public water unless this product is specifically identified and addressed in an NPDES permit. Do not discharge effluent containing this product to sewer systems without previously notifying the sewage treatment plant authority. For guidance contact your State Water Board or Regional Office of the EPA.

#### SERVICE

Calgon maintains chemical and microbiological laboratory facilities to help customers solve preservation problems in their formulations.

#### NOTICE

Seller makes no warranty, expressed or implied, concerning the use of this product other than indicated on the label. Buyer assumes all risk of use and/or handling of this material when such use and/or handling is contrary to label instruction.

For additional information regarding incidents involving human and environmental exposure, call (412) 777-8000 and ask for the Regulatory and Trade Affairs Department.

#### FDA APPROVALS

This product has been cleared for use as a slimeicide in paper or paper products intended for use in contact with food at a maximum level of 0.005% active ingredient of dry weight fiber (21 CFR 176.300). The product is also FDA approved for adhesives (21 CFR Part 175.105) and for paper or paper products intended for use in contact with food (21 CFR Parts 176.170 and 176.180).

(1emetach220)