

Page 1

Modern Living

FLY & MOSQUITO KILLER

*Equivalent to 0.43% (butylcarbityl) (6-propylpiperonyl) ether and 0.11% other related compounds

DO NOT TURN CAN UPSIDE DOWN WHILE SPRAYING

USDA Reg. No. 3410-38

DISTRIBUTED BY
ESSEX CHEMICAL CORPORATION
CONSUMER PRODUCTS DIVISION
MADE IN U.S.A.

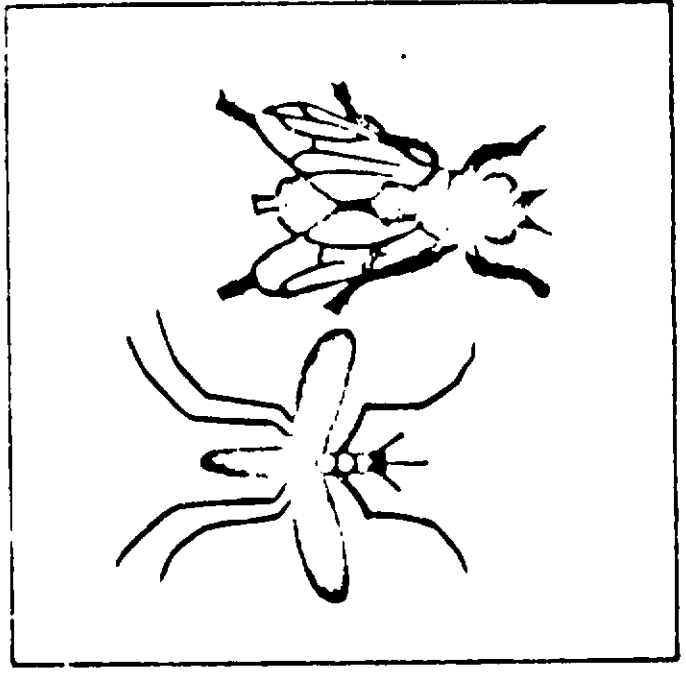
temperatures over 100 F. Avoid contamination of food and feed stuffs

ACTIVE INGREDIENTS: (By Weight)
Pyrethrins 0.15%
N-Octyl Bicycloheptene Dicarboximide 0.30%
Technical Piperonyl Butoxide* 0.54%
Petroleum Distillates 9.01%

INERT INGREDIENTS: 10.00%
90.00%
100.00%

CLOTHES MOTHS AND CARPET BEETLES: Woolens must be cleaned thoroughly before using this spray. Spray garments thoroughly from a distance of two feet. Do not overlook folds and seams when spraying. Unless garments are stored in a mothproof container, monthly application is suggested. Interior surfaces of storage closets and trunks should be thoroughly sprayed.

CAUTION: Do not puncture or incinerate container or store in



Activated for Faster Kill.
Kills Flies, Mosquitoes, Gnats, and certain other flying and Crawling Insects.

CAUTION: CONTENTS UNDER PRESSURE

Keep out of reach of children
See side panel for additional precautions

NET WT. 11 OZ.

DIRECTIONS—SHAKE GENTLY BEFORE USING

Remove cap. Hold can in upright position about 2 feet from object to be sprayed, with opening in nozzle pointing in desired direction. Press button to release spray and spray directly on insects where possible.

FLYING HOUSEHOLD INSECTS: (Flies, Gnats, Mosquitoes). Close doors and windows of room. Then proceed to spray all parts of room with sweeping circular motion. (Hit insects directly with spray where possible) Keep room closed for 15 minutes after spraying.

CRAWLING HOUSEHOLD INSECTS: (Roaches, Ants, Bedbugs, Silverfish, Spiders). When possible, use spray directly on insects. Or, spray insects' hiding places under sinks, stoves, in crevices, around doorsills, pipes, window frames, storage areas, refuse areas, etc. For Ants, spray ant-trails. Avoid direct spraying of foods. Spray mattresses and beds for bedbug control. Repeat as needed.

CUSTOMER LAYOUT COLORS
ESSEX CHEMICAL CORPORATION
INDEX NO. 5-33
ENG 10-31008
DF 1-11-73
CITY 017
CE 4846
SIZE 211 X 604
SYNTH PRESSURE
ARTIST 9018

REV 6-9-74

10423-15



YELLOW GREEN BROWN BLACK

3 1009

Page 2

Modern Living

and 0.11% other related compounds.

DO NOT TURN CAN UPSIDE DOWN WHILE SPRAYING

USDA REG. NO. 3410-38

DISTRIBUTED BY ESSEX CHEMICAL CORPORATION CONSUMER PRODUCTS DIVISION Made in U.S.A.

ACTIVE INGREDIENTS: (By Weight)

Table with 2 columns: Ingredient Name and Percentage. Includes Pyrethrins (0.15%), N-Octyl Bicycloheptene Dicarboximide (0.30%), Technical Piperonyl Butoxide* (0.54%), Petroleum Distillates (9.01%), and Inert Ingredients (10.00%, 90.00%, 100.00%).

MAY BE USED ON: Roses, Asters, Azaleas, Carnations, Evergreens, Snapdragons, Crassula, Petunias, Rhododendrons, Delphiniums, Chrysanthemums, Deciduous Plants, Iris, African Violets, Marigolds, Grape Ivy, English Ivy, Camellias, Euonymas, Dahlias.

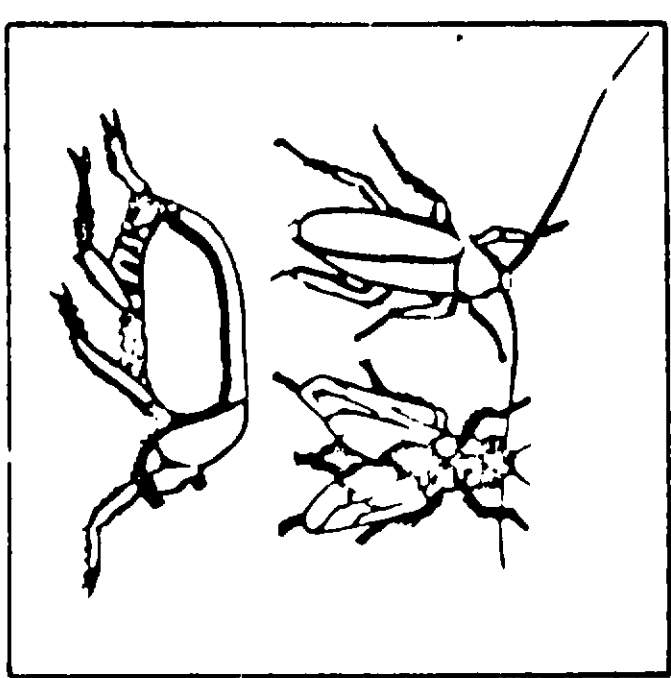
CAUTION:

Do not puncture or incinerate container or store in temperatures over 100° F. Avoid contamination of food and feed stuffs.

*Equivalent to 0.43% (butylcarbityl) (6-propylpiperonyl ether)

HOUSEHOLD GARDEN BUG KILLER

FOR HOUSE INSECTS AND GARDEN PESTS



Contains Pyrethrins, Nature's Own Insecticide

CAUTION: CONTENTS UNDER PRESSURE

Keep out of reach of children See side panel for additional precautions

NET WT. 11 OZ.

DIRECTIONS—SHAKE GENTLY BEFORE USING: Remove cap. Hold can in upright position about 2 feet from object to be sprayed... FLYING HOUSEHOLD INSECTS: (Flies, Gnats, Mosquitoes)... CRAWLING HOUSEHOLD INSECTS: (Roaches, Ants, Bedbugs, Silverfish, Spiders)... CLOTHES MOTHS AND CARPET BEETLES... GARDEN INSECTS: For use against Japanese Beetles, Leaf Hoppers, Aphids, Exposed Thrips and Adult White Flies.

CUSTOMER ESSEX CHEMICAL CORP. LAYOUT P-211 x 604 B INDEX NO 3-33 DF. 1-11-73 INC. 10-3-1069 CITY, 017 SUE 211 x 604 COLORS YELLOW GREEN BROWN BLACK WHITE COAT ARTIST 9018



10423-15

REV

Page 1

YELLOW ORANGE BLACK 31008

Modern Living

*Equivalent to 0.43% (butylcarbityl) (6-propylpiperonyl) ether and 0.11% other related compounds

DO NOT TURN CAN UPSIDE DOWN WHILE SPRAYING
USDA Reg. No. 3410-38

REGISTERED BY
ESSEX CHEMICAL CORPORATION
CONSUMER PRODUCTS DIVISION
11100 W. 11th St., Minneapolis, MN 55426
Made in U.S.A.

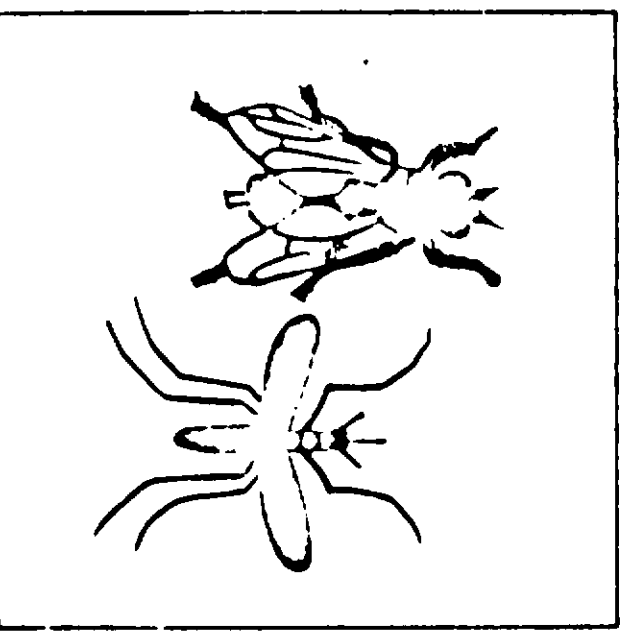
temperatures over 100 F. Avoid contamination of food and feed stuffs.

ACTIVE INGREDIENTS: (By Weight)
Pyrethrins 0.15%
N-Octyl bicycloheptene Dicarboximide 0.30%
Technical Piperonyl Butoxide* 0.54%
Petroleum Distillates 9.01%
10.00%
INERT INGREDIENTS: 90.00%
100.00%

CLOTHES MOTHS AND CARPET BEETLES: Woolens must be cleaned thoroughly before using this spray. Spray garments thoroughly, from a distance of two feet. Do not overlook folds and seams when spraying. Unless garments are stored in a mothproof container, monthly application is suggested. Interior surfaces of storage closets and trunks should be thoroughly sprayed.

CAUTION: Do not puncture or incinerate container or store in

CAUTION: CONTENTS UNDER PRESSURE
Keep out of reach of children
See side panel for additional precautions
NET WT. 11 OZ.



Activated for Faster Kill.
Kills Flies, Mosquitoes, Gnats, and certain other Flying and Crawling Insects.

FLY & MOSQUITO KILLER

DIRECTIONS—SHAKE GENTLY BEFORE USING

Remove cap. Hold can in upright position about 2 feet from object to be sprayed, with opening in nozzle pointing in desired direction. Press button to release spray and spray directly on insects where possible.

FLYING HOUSEHOLD INSECTS: (Flies, Gnats, Mosquitoes) Close doors and windows of room. Then proceed to spray all parts of room with sweeping circular motion. (Hit insects directly with spray where possible.) Keep room closed for 15 minutes after spraying.

CRAWLING HOUSEHOLD INSECTS: (Roaches, Ants, Bedbugs, Silverfish, Spiders) When possible, use spray directly on insects. Or, spray insects' hiding places under sinks, stoves, in crevices, around doorsills, pipes, window frames, storage areas, refuse areas, etc. For Ants, spray ant trails. Avoid direct spraying of foods. Spray mattresses and beds for bedbug control. Repeat as needed.

CUSTOMER ESSAY CHEMICAL CORP
LAYOUT P-211 x 604 B INDIAN NO. 5-33 DT 1-11-73
COLOR YELLOW • ORANGE • BLACK • WHITE COAT
ING 10-3 1008 CITY 017
SIZ 211 x 604
APRIL 9 018

10423-15



YELLOW GREEN BROWN BLACK

Page 2

Modern Living

3 1009

and 0.11% other related compounds.

DO NOT TURN CAN UPSIDE DOWN WHILE SPRAYING

USDA REG. NO. 3410-38

REGISTERED BY
ESSEX CHEMICAL CORPORATION
 CONSUMER PRODUCTS DIVISION
 1000 W. 10th Street
 Minneapolis, MN 55401
 MADE IN U.S.A.

ACTIVE INGREDIENTS:
 (By Weight)

Pyrethrins 0.15%
 N-Octyl Bicycloheptene Dicarboximide 0.30%
 Technical Piperonyl Butoxide* 0.54%
 Petroleum Distillates 9.01%

INERT INGREDIENTS
 10.00%
 90.00%
 100.00%

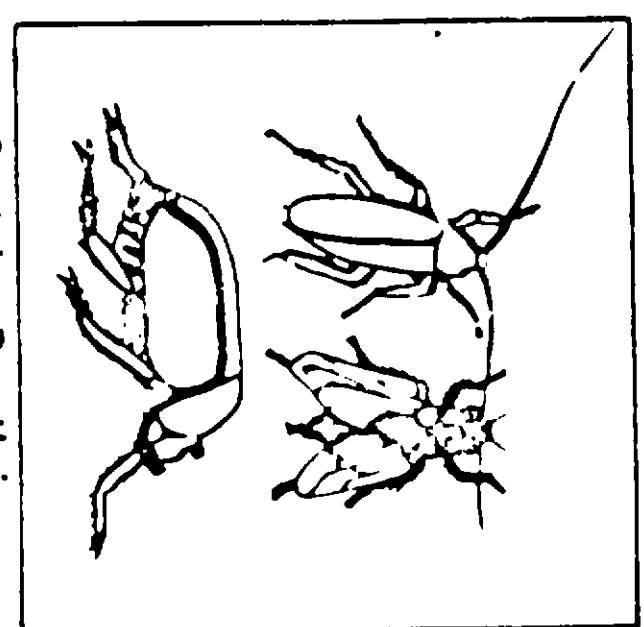
*Equivalent to 0.43% (butylcarbityl) (6-propylpiperonyl ether)

MAY BE USED ON: Roses, Asters, Azaleas, Carnations, Evergreens, Snapdragon, Crassula, Petunias, Rhododendrons, Delphiniums, Chrysanthemums, Deciduous Plants, Iris, African Violets, Marigolds, Grape Ivy, English Ivy, Camellias, Euonymas, Dahlias

CAUTION:
 Do not puncture or incinerate container or store in temperatures over 100°F. Avoid contamination of food and feed stuffs.

HOUSEHOLD GARDEN BUG KILLER

FOR HOUSE INSECTS AND GARDEN PESTS



Contains Pyrethrins,
 Nature's Own Insecticide

CAUTION: CONTENTS UNDER PRESSURE
 Keep out of reach of children
 See side panel for additional precautions

NET WT. 11 OZ.

DIRECTIONS--SHAKE GENTLY BEFORE USING. Remove cap. Hold can in upright position about 2 feet from object to be sprayed, with opening in nozzle pointing in desired direction. Press trigger to release spray and spray directly on insects where possible.

FLYING HOUSEHOLD INSECTS (Flies, Gnats, Mosquitoes): Close doors and windows of room. Then proceed to spray all parts of room with sweeping motion. Hit insects directly with spray where possible. Keep room closed for 15 minutes after spraying.

CRAWLING HOUSEHOLD INSECTS (Cockroaches, Ants, Beetles, Silverfish, Spiders): Where possible, use spray directly on insects. Or spray insects hiding in crevices, sinks, stoves, on floors, walls, and in closets, pipes, window frames, storage areas, refuse areas, etc. For Ants, spray ant trails. Avoid direct spraying of food, clothing, mattresses, and beds for bedbug control. Repeat as needed.

CLOTHES MOTHS AND CARPET BEETLES: Wools must be cleaned thoroughly before using this spray. Spray garments thoroughly from a distance of 1-2 feet. Do not spray on fur and silks when spraying. Unless garments are stored in a tightly sealed container, monthly application is suggested. Interior surfaces of storage chests and trunks should be thoroughly sprayed.

GARDEN INSECTS: For use against Japanese Beetles, Leaf Hoppers, Aphids, Exposed Thrips and Adult White Flies. Holding can 1-2 feet from plants, spray with one second bursts using a sweeping motion. Light spray on insects. Spray all sides covering plant foliage lightly. Never wet leaves. New growth and young plants should be handled with particular care. Avoid using in direct sunlight and during hottest daylight hours. Repeat when necessary. Do NOT spray on Lantana or Maiden Hair fern.

CUSTOMER ESSEX CHEMICAL CORP. ENG 10-3-1069 FCY, 0/17 SIZE 211 x 604
 LAYOUT P-211 x 604 B INDEX NO 5-33 DT 1-11-73 CLR 4542 6.375 STYLE RD PRES 207E
 COLORS YELLOW GREEN BROWN BLACK WHITE CRT APR 90/8



10423-15