

SEE ATTACHED

CUSTOMER ESSEX CHEMICAL CORP. ENG 10-31010 REV. 017 SITE 211 x 604
 LAYOUT P-211 x 604 B INDEX NO. 3-33 D.I. 1-11-73 C.E. 484 x 6.375 STYL RD PRESSURE
 COLORS YELLOW MED. BLUE BLACK 31010 ARTIST 7/18

CAUTION:
 Do not use in commercial food preparation areas or in edible products areas of food processing plants. Harmful if swallowed, inhaled or absorbed through the skin. Provide adequate ventilation of areas being treated. Avoid contact with skin, eyes or clothing. Wash thoroughly after using. Keep out of reach of children. Do not allow children to contact treated areas until surfaces are dry. Remove all pets, birds, fish, hawks, etc. before spraying. Do not spray on plastics or asphalt tile. To avoid possible staining of any surface, test first on inconspicuous area. Do not spray near open flame or while smoking. Do not puncture or throw container in fire. Do not store over 120°.

IF MISUSE RESULTS IN ILLNESS—GET PROMPT MEDICAL AID. TO PHYSICIAN—ATROPINE SULFATE IS ANTIDOTAL.

ACTIVE INGREDIENTS:	
Pyrethrins	0.05%
Piperonyl Butoxide	1.00%
N-octyl-2-cyanoheptene-3-dicarboximide	1.66%
o-Isopropyl-p-tert-butylphenol	5.00%
Inert Ingredients	91.29%
INERT INGREDIENTS:	
Corrosion Inhibitor	0.08%
(p-tert-butylphenyl) ether	0.01%
Other related compounds	0.01%
Surfactant	0.01%
Stabilizer	0.01%
U.S. patent no. 3,111,333	

CAUTION
 DO NOT SPRAY NEAR OPEN FLAME OR WHILE SMOKING.

DISTRIBUTED BY
 ESSEX CHEMICAL CORPORATION
 CONSUMER PRODUCTS DIVISION
 © Registered, Copyright © 1973
 Made in U.S.A.

YELLOW · MED BLUE · BLACK 31010

CAUTION: CONTENTS UNDER PRESSURE
 Keep out of reach of children
 See side panel for additional precautions

NET WT. 11 OZ.

EPA REG. NO. 10423-1-AA

KILLS: Roaches, Ants, Silverfish, Spiders and Certain Other Crawling Bugs.



ANTTS & ROACH KILLER
 LONG LASTING SPRAY

Modern Flyings!

DIRECTIONS—TO USE: 1. Remove protective cap. Hold can upright and point nozzle away from you. 2. Press button down to spray. 3. Spray infested surfaces until slightly wet from a distance of 6 to 10 inches. Repeat treatment as needed. **FOR SPOT APPLICATION ONLY.**

ROACHES, WATERBUGS, CRICKETS: Spray cracks in walls and floors, baseboards, around sinks, water pipes or wherever these bugs hide or breed. Repeat as needed.

ANTS, SPIDERS, SCORPIONS, CENTIPEDES: Spray surfaces around openings where insects enter or hide such as door sills, window frames, wall cracks, water pipes, heat ducts, baseboards. Also spray ant trails and center of ant hills.

SILVERFISH: Same procedure as for roaches. Also spray behind shelving, bookcases, linen closets and similar places.

BOX ELDER BUGS: Spray directly on bugs when they gather on side of houses, porches, or tree trunks. Repeat as necessary.

CARPET BEETLES: For spot application only to sections of floor, under carpets and around baseboards with special attention to cracks and crevices. Repeat as necessary.

FLYING INSECTS: Outside Use Only: To reduce annoyance of flies, mosquitoes, wasps, moths, June bugs—Spray surfaces of screens, floors, window frames and around outside light fixtures. Repeat as necessary.

ACCEPTED
 10423-1
 JUL 27 1974

UNDER THE FEDERAL INSECTICIDE FUNGICIDE AND ROBOTICIDE ACT FOR ECONOMIC POISON REGISTERED UNDER NO. 10423-1-AA SUBJECT TO APPROVED CONDITIONS.

RECEIVED
 18 JUN 1974
 REGISTRATION DIVISION
 PESTICIDES, EPA

SEE ATTACHED

CAUTION:

Do not use in commercial food preparation areas or in edible products areas of food processing plants. Harmful if swallowed, inhaled or absorbed through the skin. Provide adequate ventilation of areas being treated. Avoid contact with skin, eyes or clothing. Wash thoroughly after using. Keep out of reach of children. Do not allow children to contact treated areas until surfaces are dry. Remove all pets, birds, fish bowls, etc. before spraying. Do not spray on plastics or asphalt tile. To avoid possible staining of any surface, test first on inconspicuous area. Do not spray near open flame or while smoking. Do not puncture or throw container in fire. Do not store over 120°.

IF MISUSE RESULTS IN ILLNESS—GET PROMPT MEDICAL AID. TO PHYSICIAN—ATROPINE SULFATE IS ANTIDOTAL.

ACTIVE INGREDIENTS:	
Pyrethrins.....	.05%
Phenyl Butoxide	
Technical.....	10%
N-octyl bicycloheptene dicarboximide.....	1.66%
o-isopropylphenyl methylate.....	.500%
Petroleum distillate.....	14.484%
INERT INGREDIENTS:	
	100.000%

*Consists of .08% (butylated hydroxytoluene) ether and other related compounds.
EPA Reg. No. 264 Insecticide Synergist
"Baygon" U.S. patent no. 3,111,533

CAUTION
DO NOT SPRAY NEAR OPEN FLAME OR WHILE SMOKING.

DISTRIBUTED BY
ESSEX CHEMICAL CORPORATION
CONSUMER PRODUCTS DIVISION
Bridgeport, Connecticut 06609
Made in U.S.A.

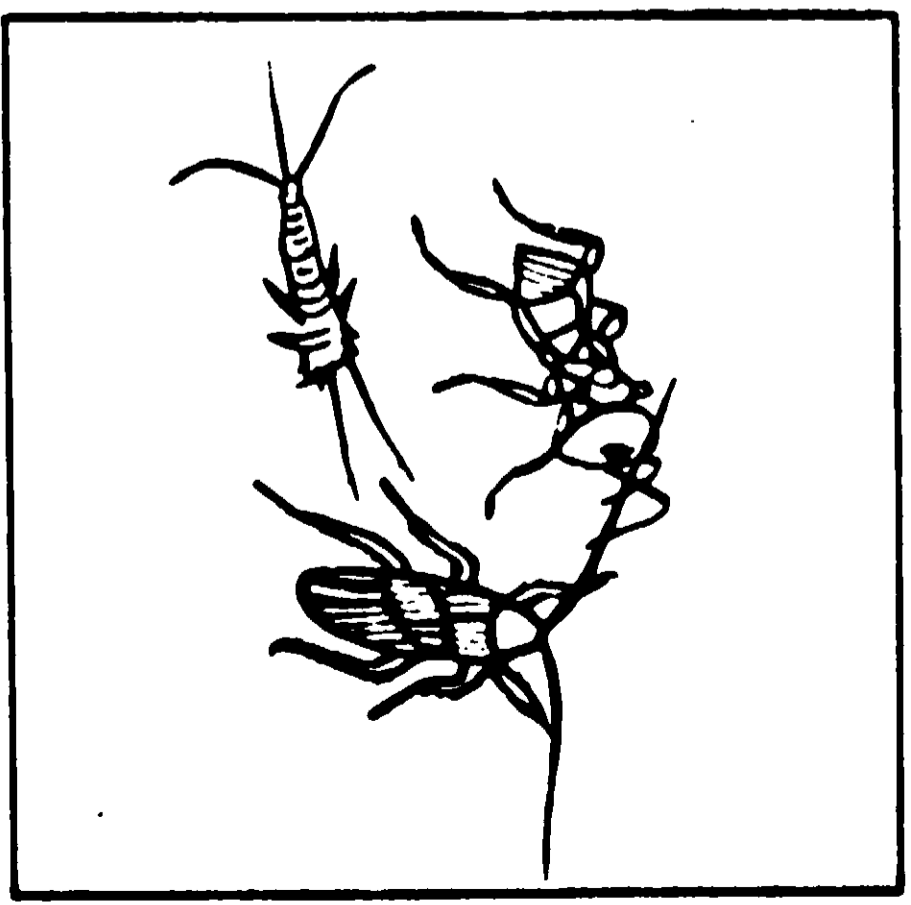
CUSTOMER	ESSEX CHEMICAL CORP.	ENG. NO.	10-31010	FCIV. NO.	017
LABOR	P-2114504-B	INDEX NO.	5-33	D.F. NO.	1-11-73
COLOR	YELLOW · MED. BLUE · BLACK				C.E.S. 484x
	YELLOW · MED. BLUE · BLACK				WHITE CART

YELLOW · MED. BLUE · BLACK 3.1010

Modern Living

ANTS! ROACH KILLER

LONG LASTING SPRAY



KILLS: Roaches, Ants, Silverfish, Spiders and Certain Other Crawling Bugs.

CAUTION: CONTENTS UNDER PRESSURE
Keep out of reach of children
See side panel for additional precautions

NET WT. 11 OZ.

EPA REG. NO. 10423-1-AA

Living

373

RAY



its, Silverfish,
n Other

UNDER PRESSURE
of children
onal precautions

OZ.

23-1-AA

DIRECTIONS—TO USE: 1. Remove protective cap. Hold can upright and point nozzle away from you. 2. Press button down to spray. 3. Spray infested surfaces until slightly wet from a distance of 6 to 10 inches. Repeat treatment as needed. **FOR SPOT APPLICATION ONLY.**

ROACHES, WATERBUGS, CRICKETS: Spray cracks in walls and floors, baseboards, around sinks, water pipes or wherever these bugs hide or breed. Repeat as needed.

ANTS, SPIDERS, SCORPIONS, CENTIPEDES: Spray surfaces around openings where insects enter or hide such as door sills, window frames, wall cracks, water pipes, heat ducts, baseboards. Also spray ant trails and center of ant hills.

SILVERFISH: Same procedure as for roaches. Also spray behind shelving, bookcases, linen closets and similar places.

BOX ELDER BUGS: Spray directly on bugs when they gather on side of houses, porches, or tree trunks. Repeat as necessary.

CARPET BEETLES: For spot application only to sections of floor, under carpets and around baseboards with special attention to cracks and crevices. Repeat as necessary.

FLYING INSECTS: Outside Use Only: To reduce annoyance of flies, mosquitoes, wasps, moths, June bugs—Spray surfaces of screens, doors, window frames and around outside light fixtures. Repeat as necessary.

REV. 017	SDE 211 X 604
CLQ. 484 X 6. 375	SVLE RD. PRESSURE
E CONT	
ARTIST 9618	

9
0
1

ACCEPTED
10423-1
JUL 27 1974
 UNDER THE FEDERAL INSECTICIDE
 FUNGICIDE AND RODENTICIDE ACT
 FOR ECONOMIC POISON REGISTER
 ED UNDER NO. _____ SUBJECT
 TO ATTACHED COMMENTS.

RECEIVED
18 JUN 1974
 REGISTRATION DIVISION
 PESTICIDES, EPA

Reg. →
← Rev.