

1 PC-6 10190-3 P11-33

FOR INDUSTRIAL AND INSTITUTIONAL USE ONLY

UV11

PC-6

Germicidal Cleaner

HOW TO USE PC-6

Before applying PC-6 remove gross filth and heavy soil deposits from surfaces. Wash and scrub with 2 ounces of PC-6 per gallon of water.... rinse, and the job is done....clean and sanitary. PC-6 will not damage floors such as asphalt tile, terrazzo, linoleum or wood. It will not harm any painted surfaces as described above. Thoroughly scrub food contact surfaces with a detergent and rinse with potable water before reuse.

WHERE TO USE PC-6

Use PC-6 to clean floors, walls, sinks, garbage cans, telephones, storage bins, lockers, shower rooms.

EPA Est. 10190-NJ-01
EPA Est. 52-CA-1

(185)

PHENOL COEFFICIENT -

7.0 Staphylococcus Aureus
6.5 Salmonella Typhosa

ACTIVE INGREDIENTS:

Ethanolamine Dodecylbenzenesulfate	7.00%
Isopropanol	3.90%
Soap	2.90%
Potassium ortho-benzl-para-chlorophenate	4.90%
Inert Ingredients	95.10%
	<i>Total 100.00%</i>

EPA Reg. No. 10190-3

WARNING:

KEEP OUT OF REACH OF CHILDREN.
Causes eye or skin irritation. Do not get in eyes, on skin or clothing. Harmful if swallowed. Avoid contamination of food.

NET CONTENTS:

Not Reviewed. Registrant claim to be in accordance with
Renewal of Pesticide Registration Guidance for Phase 3
Response, Page 2-12, Active to date of Clearance in State

STORAGE & DISPOSAL

STORAGE: Keep container closed when not in use. Do not store below 32° or above 100° F.

DISPOSAL: Do not contaminate water, food or feed by storage or disposal, or cleaning of equipment. In case of spill, flood area with water, washing to sewer or pick up and store in collection vessel. Wastes resulting from use of this product may be disposed of on site or at any approved waste disposal facility. Triple rinse empty container. Then offer for recycling or reconditioning or puncture and dispose of in a sanitary landfill. Plastic containers may be incinerated or if allowed by local authorities, by burning. If burned, stay out of smoke.

FIRST AID: In case of contact, immediately flush eyes or skin with plenty of water for at least 15 minutes. For eyes, call a physician. Remove and wash contaminated clothing before reuse. If swallowed, drink promptly a large quantity of milk, egg whites, gelatin solution or if these are not available, drink large quantities of water. Avoid alcohol. Call a physician.

SHIP TO:



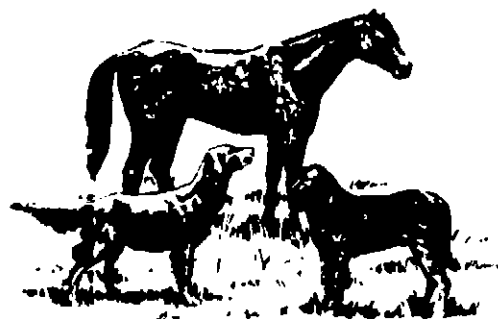
penelone[®]
CORPORATION

Penetone Corporation • A Subsidiary of West Chemical Products, Inc.
General Offices: 74 Hudson Avenue, Tenafly, New Jersey 07670 • (201) 567-3000
Other Locations in Principal Cities

KRESO DIP

No. 1 (STANDARDIZED)

INSECTICIDE • DISINFECTANT • GERMICIDE • CLEANSER



PHENOL COEFFICIENT 5 ADAC METHOD

ACTIVE INGREDIENTS: Coal Tar Hydrocarbons 53%, Coal Tar Phenols 18%.

INERT INGREDIENT: Water 9%, Soap 30%

CONTAINS COAL TAR PHENOLS

WARNING—KEEP OUT OF REACH OF CHILDREN

WARNING—May be fatal if swallowed or absorbed through the skin. Undiluted material may cause burns; do not get in eyes, on skin or on clothing. Avoid breathing spray mist. Wash after handling.

ANTIDOTE—Internal: If swallowed, do not induce vomiting. Drink large quantities of milk, gelatin solution or white of egg mixed with water, or if none available, large quantities of water. Avoid alcohol. Call a physician.

ANTIDOTE—External: Flood with water, then wash with rubbing alcohol and follow with soap and water. Call a physician if in eyes.

WARNING—Do not use on poultry or on any other food producing animal or on poultry nesting facilities. Do not use in dairy barns. Avoid contamination of food and drinking water.

CAUTION—After removing contents, rinse container several times with water. Perforate container before discarding. Bury waste material where it will not come in contact with people or animals.

CAUTION—Use only as directed. Avoid contact with eyes and mucous membranes. Do not apply to broken skin. Do not use on cats.

DO NOT STORE OR MIX NEAR HEAT OR OPEN FLAME

EPA Reg. No. 45086-1

32 FL OZ (1 QT)

EPA Est. No. 4180-NB-1

KRESO, INC.

DIRECTIONS

Kreso Dip must be diluted with water before using. Pour the water on the Kreso Dip and mix thoroughly.

Kreso Dip readily forms an emulsion when mixed with soft water. If at all possible, the water should be heated to body temperature before mixing.

When hard water must be used, it should be softened before mixing by adding washing soda or soap in sufficient quantity to make the water and Dip mix freely.

Be sure that the ingredients are thoroughly mixed before using.

If Dip does not flow freely in cold weather, place the container in a pail of warm water or a warm room until the contents liquefy.

FOR HORSES

LICE AND PSOROPTIC MANGE—Use 1 part of Kreso Dip to 60 parts of warm water. Dip or apply with spray pump. Saturate the hair and skin thoroughly. Repeat treatment for lice every 12 to 14 days as required. Repeat treatment for psoroptic mange at weekly intervals as required.

Treated horses should not be used for food purposes.

FOR DOGS

FLEAS AND LICE—Wash dogs in a solution of 1 part of Kreso Dip to 100 parts of warm water, keeping animals wet for 1 minute. Delicate-skinned animals should then be washed with soap and warm water, and then rinsed well with warm water. Repeat every 7 days as required. Kennels should be cleaned and sprayed with a solution of 1 part of Kreso Dip to 50 parts of boiling water.

SARCOPTIC MANGE—Thoroughly wet the skin and hair with a solution of 1 part of Kreso Dip to 100 parts warm water and allow solution to dry on. Do not bathe or rinse off. Repeat treatment at weekly intervals for two or more applications as needed.

Do not use on delicate-skinned animals for mange.

A bland ophthalmic ointment should be placed in the dog's eyes prior to the use of Kreso Dip and care should be taken to prevent the Kreso solution from getting into the animal's eyes.

DISINFECTION

As an effective disinfectant for livestock quarters, stables, and pens, use 1 part Kreso Dip to 72 parts warm water. This solution may be used for spraying, mopping, scrubbing or cleaning. Remove all livestock from buildings to be treated with the disinfectant. Thoroughly clean and protect or remove from the building all equipment, including feeders or waterers. Remove all litter or bedding and clean the building thoroughly. Apply disinfectant only at the recommended rate. When feeding and watering equipment is disinfected, rinse equipment thoroughly with potable water. Ventilate the building and do not house livestock until treatment has been absorbed, set or dried. Do not use in dairy barns. See Warning on front panel.

DILUTION TABLE

1-50 solution		
1 tablespoonful to 1 1/2 pints water	1 pint to 6 gallons water	1 gallon to 49 gallons water
1-60 solution		
1 tablespoonful to 2 pints water	1 pint to 7 1/2 gallons water	1 gallon to 59 gallons water
1-72 solution		
1 tablespoonful to 2 1/4 pints water	1 pint to 9 gallons water	1 gallon to 71 gallons water
1-100 solution		
1 tablespoonful to 3 pints water	1 pint to 12 gallons water	1 gallon to 99 gallons water

Add the water to the Kreso Dip.

CAUTION—DO NOT USE ON CATS
KRESO, INC.

Omaha, NE 68106

HOW TO USE PC-6

Before applying PC-6 remove gross filth and heavy soil deposits from surfaces. Wash and scrub with 2 ounces of PC-6 per gallon of water.... rinse, and the job is done....clean and sanitary. PC-6 will not damage floors such as asphalt tile, terrazzo, linoleum or wood. It will not harm any painted surfaces as described above. Thoroughly scrub food contact surfaces with a detergent and rinse with potable water before reuse.

WHERE TO USE PC-6

Use PC-6 to clean floors, walls, sinks, garbage cans, telephones, storage bins, lockers, shower rooms.

EPA Est. 10190-NJ-01
EPA Est. 52-CA-1

(185)

Not Reviewed. Registrant claims to be in accordance with Reregistration of Pesticide Product Guidance for Phase 2 Response. Page 2.12, Active to Inert Change in Status.

PHENOL COEFFICIENT -

7.0 Staphylococcus Aureus
6.5 Salmonella Typhosa

ACTIVE INGREDIENTS:

Ethanolamine Dodecylbenzenesulfate	7.00%
Isopropanol	3.90%
Soap	2.90%
Potassium ortho-benzl-para-chlorophenate	4.90%
Inert Ingredients	95.10%
	Total 100.00%

EPA Reg. No. 10190-3

WARNING:

KEEP OUT OF REACH OF CHILDREN.
Causes eye or skin irritation. Do not get in eyes, on skin or clothing. Harmful if swallowed. Avoid contamination of food.

NET CONTENTS:

STORAGE & DISPOSAL

STORAGE: Keep container closed when not in use. Do not store below 32° or above 100° F.

DISPOSAL: Do not contaminate water, food or feed by storage or disposal, or cleaning of equipment. In case of spill, flood area with water, washing to sewer or pick up and store in collection vessel. Wastes resulting from use of this product may be disposed of on site or at any approved waste disposal facility. Triple rinse empty container. Then offer for recycling or reconditioning or puncture and dispose of in a sanitary landfill. Plastic containers may be incinerated or if allowed by local authorities, by burning. If burned, stay out of smoke.

FIRST AID: In case of contact, immediately flush eyes or skin with plenty of water for at least 15 minutes. For eyes, call a physician. Remove and wash contaminated clothing before reuse. If swallowed, drink promptly a large quantity of milk, egg whites, gelatin solution or if these are not available, drink large quantities of water. Avoid alcohol. Call a physician.

SHIP TO:



penetone[®]
CORPORATION

Penetone Corporation • A Subsidiary of West Chemical Products, Inc.
General Offices: 74 Hudson Avenue, Tenafly, New Jersey 07670 • (201) 567-3000
Other Locations in Principal Cities

BEST AVAILABLE COPY

CREATIVE CREATIVE

DISINFECTANT CLEANER

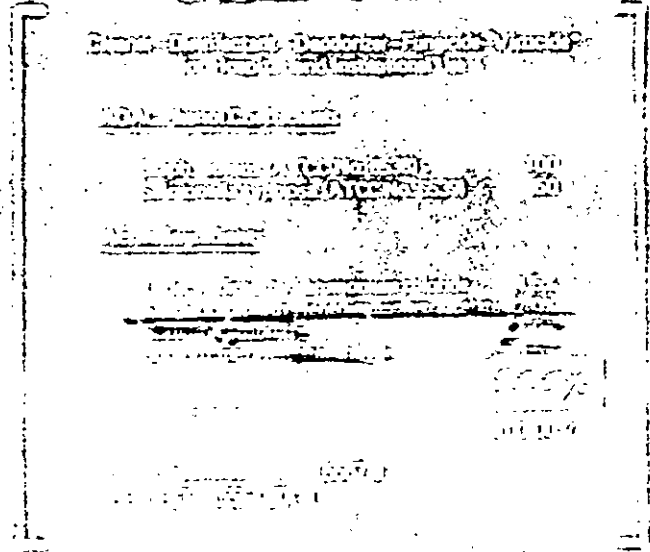
USE DIRECTIONS

WARNING

See label for first aid instructions. Avoid contact with eyes. Do not get on face. Do not breathe vapors. Avoid contact with skin. Avoid contact with clothing.

FIRST AID

In case of eye contact, flush eyes with clean water for at least 15 minutes. Do not get in eyes. If on face, wash with water. If on skin, wash with soap and water. If on clothing, remove clothing. If inhaled, get fresh air. If swallowed, do not induce vomiting. Seek medical attention.



USE DIRECTIONS
Apply to surface to be disinfected. Allow to remain on surface for 10 minutes. Rinse with water. Do not use on surfaces that are not compatible with this product. Do not use on surfaces that are already wet. Do not use on surfaces that are made of metal, stone, or wood. Do not use on surfaces that are made of plastic or vinyl. Do not use on surfaces that are made of fabric or paper. Do not use on surfaces that are made of glass or ceramic. Do not use on surfaces that are made of leather or rubber. Do not use on surfaces that are made of wax or oil. Do not use on surfaces that are made of paint or varnish. Do not use on surfaces that are made of wallpaper or fabric. Do not use on surfaces that are made of carpet or rug. Do not use on surfaces that are made of tile or grout. Do not use on surfaces that are made of brick or mortar. Do not use on surfaces that are made of concrete or stone. Do not use on surfaces that are made of metal or steel. Do not use on surfaces that are made of aluminum or copper. Do not use on surfaces that are made of brass or zinc. Do not use on surfaces that are made of silver or gold. Do not use on surfaces that are made of platinum or palladium. Do not use on surfaces that are made of titanium or zirconium. Do not use on surfaces that are made of niobium or tantalum. Do not use on surfaces that are made of hafnium or rhenium. Do not use on surfaces that are made of ruthenium or rhodium. Do not use on surfaces that are made of iridium or osmium. Do not use on surfaces that are made of selenium or tellurium. Do not use on surfaces that are made of polonium or astatine. Do not use on surfaces that are made of francium or actinium. Do not use on surfaces that are made of thorium or uranium. Do not use on surfaces that are made of plutonium or americium. Do not use on surfaces that are made of curium or berkelium. Do not use on surfaces that are made of californium or einsteinium. Do not use on surfaces that are made of fermium or mendelevium. Do not use on surfaces that are made of nobelium or lawrencium. Do not use on surfaces that are made of roentgenium or copernicium. Do not use on surfaces that are made of darmstadtium or rolandium. Do not use on surfaces that are made of meitnerium or hassium. Do not use on surfaces that are made of bohrium or hassium. Do not use on surfaces that are made of tennessine or oganesson.

NET CONTENTS 1.0 U.S. GALLONS

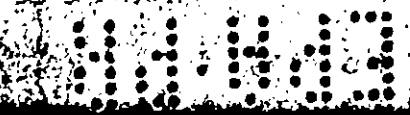
Not Reviewed. Registrations to be in accordance with
Registration of Pesticide Product Guidelines for Phase 2
Response, Page 2.12. Active to that Change in Status.

WARNING

KEEP OUT OF REACH OF CHILDREN

SEE LEFT PANEL FOR FIRST AID AND
ADDITIONAL PRECAUTIONARY STATEMENTS

Mfg. by **creative chemicals**
3 CHURCH ST. INC. PALMER, MASS.
TELEPHONE (413) 283-9778 01069



PC-6

TM
EPA # 101-10-2
P2 10, 1
C.P. 2/6/70

Germicidal Cleaner

HOW TO USE PC-6

Before applying PC-6 remove gross filth and heavy soil deposits from surfaces. Wash and scrub with 2 ounces of PC-6 per gallon of water.... rinse, and the job is done....clean and sanitary. PC-6 will not damage floors such as asphalt tile, terrazzo, linoleum or wood. It will not harm any painted surfaces as described above. Thoroughly scrub food contact surfaces with a detergent and rinse with potable water before reuse.

WHERE TO USE PC-6

Use PC-6 to clean floors, walls, sinks, garbage cans, telephones, storage bins, lockers, shower rooms.

EPA Est. 10190-NJ-01 (185)
EPA Est. 52-CA-1

PHENOL COEFFICIENT -

7.0 Staphylococcus Aureus
6.5 Salmonella Typhosa

ACTIVE INGREDIENTS:

Ethanolamine Dodecylbenzenesulfate	7.00%
Isopropanol	3.90%
Soap	2.90%
Potassium ortho-benzl-para-chlorophenate	4.90%
Inert Ingredients	95.10%
Total 100.00%	

EPA Reg. No. 10190-3

WARNING:
KEEP OUT OF REACH OF CHILDREN.
Causes eye or skin irritation. Do not get in eyes, on skin or clothing. Harmful if swallowed. Avoid contamination of food.

NET CONTENTS:

STORAGE & DISPOSAL

STORAGE: Keep container closed when not in use. Do not store below 32° or above 100° F.

DISPOSAL: Do not contaminate water, food or feed by storage or disposal, or cleaning of equipment. In case of spill, flood area with water, washing to sewer or pick up and store in collection vessel. Wastes resulting from use of this product may be disposed of on site or at any approved waste disposal facility. Triple rinse empty container. Then offer for recycling or reconditioning or puncture and dispose of in a sanitary landfill. Plastic containers may be incinerated or if allowed by local authorities, by burning. If burned, stay out of smoke.

FIRST AID: In case of contact, immediately flush eyes or skin with plenty of water for at least 15 minutes. For eyes, call a physician. Remove and wash contaminated clothing before reuse. If swallowed, drink promptly a large quantity of milk, egg whites, gelatin solution or if these are not available, drink large quantities of water. Avoid alcohol. Call a physician.

SHIP TO:



Penetone Corporation • A Subsidiary of West Chemical Products, Inc.
General Offices: 74 Hudson Avenue, Tenafly, New Jersey 07670 • (201) 567-3000
Other Locations in Principal Cities