

10182-248

**RESTRICTED USE PESTICIDE**  
Ground and Surface Water Concerns

For retail sale to and use only by Certified Applicators, or persons under their direct supervision, and only for those uses covered by the Certified Applicator's certification.

This product is a restricted use herbicide due to ground and surface water concerns. Users must read and follow all precautionary statements and instructions for use in order to minimize potential for atrazine to reach ground and surface water.

**SUTAZINE®+**  
Selective Herbicide

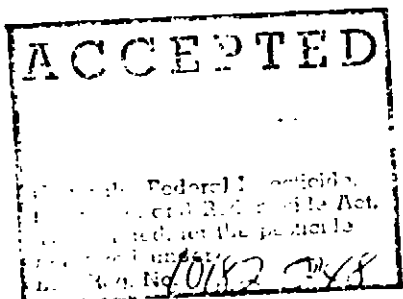
A Preplant Incorporated Herbicide for Control of  
Annual Grass and Broadleaf Weeds in Field, Sweet, Pop, and Silage Corn

<b>ACTIVE INGREDIENTS:</b>	<b>By Wt.</b>
Butylate:	
S-Ethyl diisobutylthiocarbamate .....	56.80%
Atrazine:	
2-chloro-4-(ethylamino)-6-(isopropylamino)-s-triazine .....	13.90%
Related Triazines .....	0.30%
<b>INERT INGREDIENTS:</b> .....	<u>29.00%</u>
<b>Total</b> .....	<b>100.00%</b>

Contains 4.8 pounds S-ethyl diisobutylthiocarbamate and 1.2 pounds atrazine active ingredient per gallon.

EPA Reg. No. 10182-248  
EPA Est. No. 10182-

Net Contents:



**KEEP OUT OF REACH OF CHILDREN**

**DANGER**

Made in U.S.A.  
ICI Agricultural Products  
ICI America, Inc.  
Wilmington, DE 19897

20726

### STATEMENT OF PRACTICAL TREATMENT

#### FIRST AID

If a known exposure occurs or is suspected, immediately start the procedures given below. If further treatment is required, contact a Poison Control Center, a physician, or the nearest hospital.

**IF SWALLOWED:** Immediately give several glasses of water and induce vomiting by gagging the victim with a finger placed on the back of the victim's tongue. Give fluids until vomitus is clear. If victim is unconscious or convulsing, do not induce vomiting or give anything by mouth.

**IF IN EYES:** Immediately flush the eyes with plenty of running water for at least 15 minutes. Hold the eyelids apart during flushing to ensure rinsing of the entire surface of the eye and lids with water. Call a physician.

**IF ON SKIN:** Flush affected areas with plenty of water for several minutes. Remove and clean any contaminated clothing and shoes. Get medical attention if skin irritation occurs.

**IF INHALED:** Remove to fresh air. Seek medical attention if respiratory irritation occurs or breathing becomes difficult.

---

**FOR 24-HOUR EMERGENCY MEDICAL ASSISTANCE, CALL 1-800-F-A-S-T-M-E-D (327-8633).**

**FOR CHEMICAL EMERGENCY: Spill, leak, fire, exposure, or accident call CHEMTREC 1-800-424-9300.**

---

73726

## PRECAUTIONARY STATEMENTS

### HAZARDS TO HUMANS AND DOMESTIC ANIMALS

#### DANGER

**CORROSIVE, CAUSES IRREVERSIBLE EYE DAMAGE. HARMFUL IF SWALLOWED.** Avoid contact with skin, eyes, and clothing. Avoid breathing spray mist. Wear goggles, rubber gloves, and protective clothing when handling. Wash skin with soap and water immediately after contact. Flush eyes with water.

Do not apply this product in such a manner as to directly or through drift expose workers or other persons.

Users are required to wear long sleeve shirts and long pants or equivalent, chemical resistant gloves, and boots (waterproofed). In addition, persons involved in mixing/loading operations are required to use heavy-duty chemical resistant gloves or neoprene gloves and a face shield or goggles.

#### ENVIRONMENTAL HAZARDS

Atrazine leaches readily and accepted label rates have been found to result in contamination of water supplies by way of groundwater. Therefore, users are advised to avoid use of atrazine in well-drained soils, particularly in areas having high groundwater tables.

Ground water contamination may be reduced by diking and flooring of permanent liquid bulk storage sites with an impermeable material.

This pesticide is toxic to aquatic invertebrates. Do not apply directly to water or to areas where surface water is present, or to intertidal areas below the mean high water mark. Runoff and drift from treated areas may be hazardous to aquatic organisms in neighboring areas. Do not contaminate water when disposing of equipment washwaters.

### DIRECTIONS FOR USE

It is a violation of Federal law to use this product in a manner inconsistent with its labeling.

Refer to attached booklet for use directions.

### GENERAL INFORMATION

SUTAZINE®+ selective herbicide is a selective herbicide which is mixed into the soil for control of weeds listed in Table 1 of attached booklet. SUTAZINE+ controls annual grasses and broadleaves as their seeds germinate by interfering with normal germination and seedling development. It does not control established weeds.

### GENERAL USE PRECAUTIONS

- Read all label directions before using.
- This product is intended for preplant or preemergence application only. No postemergence use is permitted.
- Failure to strictly follow label directions may result in exceeding the maximum annual atrazine use rates as stipulated by the Environmental Protection Agency.
- Where sequential postemergence treatments with appropriately registered products containing atrazine are necessary, do not exceed a total of 2.5 pounds active ingredient atrazine per acre per calendar year.
- This product may not be mixed/loaded or used within 50 feet of all wells, including abandoned wells, drainage wells, and sink holes. This product may not be mixed or loaded within 50 feet of intermittent streams and rivers, natural or impounded lakes and reservoirs. This product may not be applied aerially or by ground within 66 feet of the points where field surface water runoff enters perennial or intermittent streams and rivers or within 200 feet around natural or impounded lakes and reservoirs. If this product is applied to highly erodible land, the 66 foot buffer or set-back from runoff points must be planted to crop or seeded with grass or other suitable crop.
- Do not apply this product through any type of irrigation system.
- ~~Postemergence application to corn must be made before corn reaches 12 inches in height.~~
- The maximum application rate for corn is 2.5 pounds atrazine active ingredient per acre per calendar year.
- This product contains atrazine and thus may not control weeds that are known, or suspected to be triazine resistant.
- SUTAZINE+ is recommended for use only on mineral soils or those soils containing less than 10% organic matter.
- SUTAZINE+ should not be used on milo or sorghum.

24-10-20

- SUTAZINE+ should not be used on corn seed stock such as Breeders, Foundation, or Increase.
- SUTAZINE+ can be used on production seed corn.
- Do not contaminate irrigation water used for crops other than corn or water used for domestic purposes.
- Do not apply SUTAZINE+ before preirrigation in irrigated areas.
- Do not allow SUTAZINE+ to contaminate feed or food.
- SUTAZINE+ should not be stored near seeds, fertilizers, or foodstuffs.
- All containers of SUTAZINE+ should be kept tightly closed when not in use.
- Do not use in Arizona or 10 southernmost counties in California.
- Applied according to directions and under normal growing conditions, SUTAZINE+ will not harm the treated crop. During germination and early stages of growth, extended periods of unusually cold and wet or hot and dry weather, insect or plant disease attack, carryover pesticide residues, the use of certain soil applied systemic insecticides, improperly placed fertilizers or soil insecticides may create abnormal conditions that weaken crop seedlings. SUTAZINE+ used under these abnormal conditions could result in crop injury.
- Make only one application per crop.
- After treatment with SUTAZINE+, do not plant any crop except corn until the following year or injury may occur.
- Do not apply SUTAZINE+ after June 10.
- Following corn harvest, thoroughly invert soil by deep discing or plowing in the fall or early spring to minimize injury potential to rotational spring seeded crops.
- Corn or soybeans may be planted the spring season following treatment.
- Small grains may be planted 15 months following treatment.
- All other atrazine sensitive crops may be planted 18 months after application.
- Injury may occur to soybeans the year following corn when planted in north central and northwest Iowa, south central and southwest Minnesota, northern Nebraska and southeast South Dakota on soils having a calcareous surface layer.
- Where there are state/local requirements regarding atrazine use (including lower maximum rates and/or higher set-backs) which are different from the label, the more restrictive/protective requirements apply.

### STORAGE AND DISPOSAL

**PROHIBITIONS:** Do not contaminate water, food, or feed by storage or disposal. Open dumping is prohibited. Do not reuse empty container.

**STORAGE:** Keep container tightly closed when not in use. Do not store near seeds, fertilizers, or food stuffs. Can be stored at temperatures as low as minus 30°F.

**PESTICIDE DISPOSAL:** Rinse spray equipment. Pesticide wastes are acutely hazardous. Improper disposal of excess pesticide, spray mixture, or rinsate is a violation of Federal law. If these wastes cannot be disposed of by use according to label instructions, contact your State Pesticide or Environmental Control Agency, or the Hazardous Waste Representative at the nearest EPA Regional Office for guidance.

#### **CONTAINER DISPOSAL:**

**Metal:** Triple rinse (or equivalent); then offer for recycling or reconditioning, or puncture and dispose of in a sanitary landfill, or by other procedures approved by State and local authorities.

**Plastic:** Triple rinse (or equivalent); then offer for recycling or reconditioning, or puncture and dispose of in a sanitary landfill, or by incineration, or, if allowed by State and local authorities, by burning. If burned, stay out of smoke.

#### **FOR BULK AND MINI-BULK CONTAINERS**

**CONTAINER DISPOSAL:** Reseal container and offer for reconditioning, or triple rinse (or equivalent) and offer for recycling or reconditioning, or clean in accordance with manufacturer's instructions.

#### **CONTAINER PRECAUTIONS**

Before refilling, inspect thoroughly for damage such as cracks, punctures, bulges, dents, abrasions, and damaged or worn threads on closure devices.

**REFILL ONLY WITH SUTAZINE®+ selective herbicide.** The contents of this container cannot be completely removed by cleaning. Refilling with materials other than SUTAZINE+ will result in contamination and may weaken container.

After filling and before transporting, check for leaks.

Do not refill or transport damaged or leaking container.

Circulation before dispensing is required.

**CONTAINER IS NOT SAFE FOR FOOD, FEED, OR DRINKING WATER!**

**IMPORTANT:** Read the entire Directions for Use and the Conditions of Sale and Warranty before using this product.

**CONDITIONS OF SALE AND LIMITED WARRANTY:**

The Directions for Use of this product are believed to be reliable and should be followed carefully. However, it is impossible to eliminate all risks inherently associated with the use of this product. Crop injury, ineffectiveness or other unintended consequences may result because of such factors as timing and method of application, weather and crop conditions, mixture with other chemicals not specifically recommended or other influencing factors in the use of the product, all of which are beyond the control of the seller. All such risks shall be assumed by Buyer and User, and Buyer and User agree to hold Seller harmless for any claims relating to such factors.

Seller warrants that this product conforms to the chemical description on the label and is reasonably fit for the purposes stated on the label, subject to the inherent risks referred to above, when used in accordance with directions under normal conditions of use. This warranty does not extend to the use of this product contrary to label instructions, or under abnormal conditions or under conditions not reasonably foreseeable to or beyond the control of Seller and Buyer and User assume the risk of any such use. SELLER DISCLAIMS ALL OTHER WARRANTIES EXPRESSED OR IMPLIED INCLUDING ANY WARRANTY OF FITNESS OR MERCHANTABILITY.

When Buyer or User claims losses or damages resulting from the use or handling of this product (including claims based on contract, negligence, strict liability or other legal theories), Buyer or User must promptly notify in writing Seller of any claims to be eligible to receive either of the remedies set forth below. The EXCLUSIVE REMEDY OF BUYER OR USER and the LIMIT OF LIABILITY of Seller will be, at the election of Seller, refund of the purchase price paid for product bought, or replacement of amount of product used. SELLER SHALL NOT BE LIABLE FOR CONSEQUENTIAL, SPECIAL OR INDIRECT DAMAGES RESULTING FROM THE USE OR HANDLING OF THIS PRODUCT AND SELLER'S SOLE LIABILITY AND BUYER'S AND USER'S EXCLUSIVE REMEDY SHALL BE LIMITED TO THE REFUND OF THE PURCHASE PRICE.

This product is sold only for uses stated on its label. No express or implied license is granted to use or sell this product under any patent in any country except as specified: Country: United States of America. Patent No. 4,021,224; 4,137,070.

SUTAZINE®+ is a trademark of an ICI Group Company.

---

**RESTRICTED USE PESTICIDE**  
**Ground and Surface Water Concerns**

For retail sale to and use only by Certified Applicators, or persons under their direct supervision, and only for those uses covered by the Certified Applicator's certification.

This product is a restricted use herbicide due to ground and surface water concerns. Users must read and follow all precautionary statements and instructions for use in order to minimize potential for atrazine to reach ground and surface water.

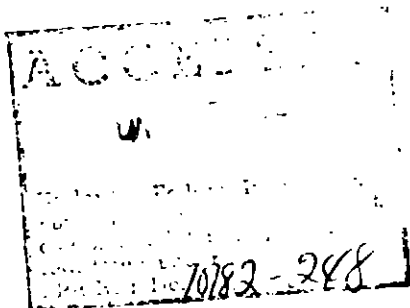
---

**SUTAZINE®+**  
**Selective Herbicide**

A Preplant Incorporated Herbicide for Control of  
Annual Grass and Broadleaf Weeds in Field, Sweet, Pop, and Silage Corn

**COMPLETE DIRECTIONS FOR USE**

EPA Reg. No. 10182-248  
EPA Est. No. 10182-



Made in U.S.A.  
ICI Agricultural Products  
ICI Americas Inc.  
Wilmington DE 19897



904

**KEEP OUT OF REACH OF CHILDREN**

**DANGER**

<b>ACTIVE INGREDIENTS:</b>	<b>By Wt.</b>
Butylate:	
S-Ethyl diisobutylthiocarbamate .....	56.80%
Atrazine:	
2-chloro-4-(ethylamino)-6-(isopropylamino)-s-triazine .....	13.90%
Related Triazines .....	0.30%
<b>INERT INGREDIENTS:</b> .....	<u>29.00%</u>
<b>Total</b> .....	<b>100.00%</b>

Contains 4.8 pounds S-ethyl diisobutylthiocarbamate and 1.2 pounds atrazine active ingredient per gallon.

**STATEMENT OF PRACTICAL TREATMENT**

**FIRST AID**

If a known exposure occurs or is suspected, immediately start the procedures given below. If further treatment is required, contact a Poison Control Center, a physician, or the nearest hospital.

**IF SWALLOWED:** Immediately give several glasses of water and induce vomiting by gagging the victim with a finger placed on the back of the victim's tongue. Give fluids until vomitus is clear. If victim is unconscious or convulsing, do not induce vomiting or give anything by mouth.

**IF IN EYES:** Immediately flush the eyes with plenty of running water for at least 15 minutes. Hold the eyelids apart during flushing to ensure rinsing of the entire surface of the eye and lids with water. Call a physician.

**IF ON SKIN:** Flush affected areas with plenty of water for several minutes. Remove and clean any contaminated clothing and shoes. Get medical attention if skin irritation occurs.

**IF INHALED:** Remove to fresh air. Seek medical attention if respiratory irritation occurs or breathing becomes difficult.

---

**FOR 24-HOUR EMERGENCY MEDICAL ASSISTANCE, CALL 1-800-F-A-S-T-M-E-D (327-8633).**

**FOR CHEMICAL EMERGENCY: Spill, leak, fire, exposure, or accident call CHEMTREC 1-800-424-9300.**

---

## PRECAUTIONARY STATEMENTS

### HAZARDS TO HUMANS AND DOMESTIC ANIMALS

#### DANGER

**CORROSIVE, CAUSES IRREVERSIBLE EYE DAMAGE. HARMFUL IF SWALLOWED.** Avoid contact with skin, eyes, and clothing. Avoid breathing spray mist. Wear goggles, rubber gloves, and protective clothing when handling. Wash skin with soap and water immediately after contact. Flush eyes with water.

Do not apply this product in such a manner as to directly or through drift expose workers or other persons.

Users are required to wear long-sleeve shirts and long pants or equivalent, chemical resistant gloves, and boots (waterproofed). In addition, persons involved in mixing/loading operations are required to use heavy-duty chemical resistant gloves or neoprene gloves and a face shield or goggles.

#### ENVIRONMENTAL HAZARDS

Atrazine leaches readily and accepted label rates have been found to result in contamination of water supplies by way of groundwater. Therefore, users are advised to avoid use of atrazine in well-drained soils, particularly in areas having high groundwater tables.

Ground water contamination may be reduced by diking and flooring of permanent liquid bulk storage sites with an impermeable material.

This pesticide is toxic to aquatic invertebrates. Do not apply directly to water or to areas where surface water is present, or to intertidal areas below the mean high water mark. Runoff and drift from treated areas may be hazardous to aquatic organisms in neighboring areas. Do not contaminate water when disposing of equipment washwaters.

110426

### DIRECTIONS FOR USE

It is a violation of Federal law to use this product in a manner inconsistent with its labeling.

#### GENERAL INFORMATION

SUTAZINE®+ selective herbicide is a selective herbicide which is mixed into the soil for control of weeds listed in Table 1 of this label. SUTAZINE+ controls annual grasses and broadleaves as their seeds germinate by interfering with normal germination and seedling development. It does not control established weeds.

#### GENERAL USE PRECAUTIONS

- Read all label directions before using.
- This product is intended for preplant or preemergence application only. No postemergence use is permitted.
- Failure to strictly follow label directions may result in exceeding the maximum annual atrazine use rates as stipulated by the Environmental Protection Agency.
- Where sequential postemergence treatments with appropriately registered products containing atrazine are necessary, do not exceed a total of 2.5 pounds active ingredient atrazine per acre per calendar year.
- This product may not be mixed/loaded or used within 50 feet of all wells, including abandoned wells, drainage wells, and sink holes. This product may not be mixed or loaded within 50 feet of intermittent streams and rivers, natural or impounded lakes and reservoirs. This product may not be applied aerially or by ground within 66 feet of the points where field surface water runoff enters perennial or intermittent streams and rivers or within 200 feet around natural or impounded lakes and reservoirs. If this product is applied to highly erodible land, the 66 foot buffer or set-back from runoff points must be planted to crop or seeded with grass or other suitable crop.
- Do not apply this product through any type of irrigation system.
- ~~Postemergence application to corn must be made before corn reaches 12 inches in height.~~
- The maximum application rate for corn is 2.5 pounds atrazine active ingredient per acre per calendar year.
- This product contains atrazine and thus may not control weeds that are known or suspected to be triazine resistant.
- SUTAZINE+ is recommended for use only on mineral soils or those soils containing less than 10% organic matter.
- SUTAZINE+ should not be used on milo or sorghum.
- SUTAZINE+ should not be used on corn seed stock such as Breeders, Foundation, or Increase.

- SUTAZINE+ can be used on production seed corn.
- Do not contaminate irrigation water used for crops other than corn or water used for domestic purposes.
- Do not apply SUTAZINE+ before preirrigation in irrigated areas.
- Do not allow SUTAZINE+ to contaminate feed or food.
- SUTAZINE+ should not be stored near seeds, fertilizers, or foodstuffs.
- All containers of SUTAZINE+ should be kept tightly closed when not in use.
- Do not use in Arizona or 10 southernmost counties in California.
- Applied according to directions and under normal growing conditions, SUTAZINE+ will not harm the treated crop. During germination and early stages of growth, extended periods of unusually cold and wet or hot and dry weather, insect or plant disease attack, carryover pesticide residues, the use of certain soil applied systemic insecticides, improperly placed fertilizers or soil insecticides may create abnormal conditions that weaken crop seedlings. SUTAZINE+ used under these abnormal conditions could result in crop injury.
- Make only one application per crop.
- After treatment with SUTAZINE+, do not plant any crop except corn until the following year or injury may occur.
- Do not apply SUTAZINE+ after June 10.
- Following corn harvest, thoroughly invert soil by deep discing or plowing in the fall or early spring to minimize injury potential to rotational spring seeded crops.
- Corn or soybeans may be planted the spring season following treatment.
- Small grains may be planted 15 months following treatment.
- All other atrazine sensitive crops may be planted 18 months after application.
- Injury may occur to soybeans the year following corn when planted in north central and northwest Iowa, south central and southwest Minnesota, northern Nebraska and southeast South Dakota on soils having a calcareous surface layer.
- Where there are state/local requirements regarding atrazine use (including lower maximum rates and/or higher set-backs) which are different from the label, the more restrictive/protective requirements apply.

## APPLICATION DIRECTIONS

### Carriers:

- Liquids - Either water or fluid fertilizers such as solutions, slurries, or suspensions may be used as liquid carriers. If fluid fertilizers are used, a physical compatibility test with these

must be done before combining in the spray tank. See Appendix I for details of the compatibility testing procedure. Even if SUTAZINE+ is physically compatible with a fluid fertilizer, constant agitation is necessary to maintain a uniform mixture during application.

- If there is a delay in incorporation when liquid carriers are used, the application must be made to a soil surface dry to at least 1/2 inch deep and free from dew and incidental moisture and must be incorporated within 4 hours.
- Dry bulk fertilizer - SUTAZINE+ may be impregnated on dry bulk fertilizer except single superphosphate (0-20-0), treble superphosphate (0-46-0), and nitrate fertilizers and applied as the fertilizer is spread.
  - Bulk fertilizer impregnated with SUTAZINE+ alone or in tankmix combinations should be applied immediately, not stored.
  - It is recommended that all bulk containers be tightly covered while the product is being transported and applied to reduce probability of SUTAZINE+ loss via volatilization. Any applications using impregnated material that are not immediately incorporated in the same operation must be made to a soil surface dry to at least 1/2 inch deep and free from dew and incidental moisture and incorporated the same day.
  - Uniform distribution of SUTAZINE+ on fertilizer particles and uniform application are necessary to assure good results.
  - See APPENDIX II and consult your local dealer for details including what fertilizers are compatible.

**Adding to Spray Tank:**

If SUTAZINE+ is used alone:

- Add the recommended amount to a clean (thoroughly rinsed and decontaminated) spray tank before it is half filled so that addition of the remaining water or fluid fertilizer carrier can aid in the thorough agitation and mixing of the spray solution.

**Volume and Agitation:**

- Apply in 10 to 50 gallons of water or fluid fertilizers per acre using a properly calibrated sprayer having good agitation.
- Use higher gallonage in arid areas.

**Pressure and Nozzles:**

- Use 15 to 50 psi to ensure good distribution in the spray pattern.
- Use either flood, fan, or swirl chamber nozzles that have been properly calibrated on a boom type sprayer .
- Agitation should be moderate, not excessive.

**Soil Moisture and Tillth:**

- Improper incorporation or poor tillth such as large clods may result in erratic or unsatisfactory weed control.
- The soil should be dry enough to permit good soil mixing or incorporation.
- Loss of weed control will result from any delay in incorporation if SUTAZINE+ is applied to a moist surface.
- Delayed applications must be made on a soil surface dry to 1/2 inch deep and free from dew and incidental moisture.

**Incorporation Timing:**

- Application and incorporation should be done in the same operation, when possible.
- Application in water or fluid fertilizer must not have more than a 4-hour delay between application and incorporation.
- If there is a delay between application and incorporation, see the comments on soil moisture and time allowable under previous sections on Liquid Carriers or Dry Bulk Fertilizers Carriers.
- In the semi-arid areas of eastern Washington, eastern Oregon and Idaho, SUTAZINE+ may be surface applied immediately after planting and incorporated by sprinkler irrigation (see soil moisture statement above).
- SUTAZINE+ can then be incorporated using 1/2 to 1 inch of water within 36 hours following application.
- The application and incorporation must be done within 5 days after the last tillage operation since poor results will occur if weeds have germinated.

**Incorporation Equipment and Methods:**

SUTAZINE+ must be incorporated into the soil to prevent loss of the herbicide. Thorough mixing is necessary for uniform weed control.

*Power driven cultivation equipment*

- Soil should have previous primary tillage.
- Ground speed must be adjusted with PTO to ensure thorough incorporation.
- Set horizontal action tine equipment to cut 4 to 6 inches deep.
- Set vertical action tine equipment to cut 3 to 4 inches deep.

*Tandem disc*

- Can be used on all soil types.
- Set disc to cut 4 to 6 inches deep.
- Operate disc at 4 to 6 MPH.
- Follow disc by a harrow or leveling device slightly wider than the disc.
- Two passes in different directions will improve incorporation.
- On the second pass the disc should be operated shallower than the first pass.
- If deep germinating weeds are present, a second incorporation will improve control or suppression. Weeds which fall into this category are: shattercane, seedling Johnsongrass, and nutsedge.

*Field Cultivator*

- Recommended for use on lighter soils in good till.
- Equip with 3 to 4 rows of sweeps spaced at 7 inches or less and staggered from row to row to leave no soil unturned or undisturbed.
- Set the field cultivator to cut 4 to 6 inches deep.
- Operate the field cultivator at 5 MPH or more.
- Follow by a harrow or leveling device.
- Chisel plow or points should not be used.
- Two passes in different directions with the second pass shallower than the first will improve incorporation.
- If deep germinating weeds are present, use a tandem disc for the first pass. Weeds which fall into this category are: shattercane, seedling Johnsongrass, and nutsedge.

**Planting:**

- Plant seed to a maximum depth of 2 inches.

- Planting can be done immediately or delayed for up to two weeks except for shattercane.
- Avoid moving or shaping soil after incorporation or working deeper than the SUTAZINE+ was incorporated since this can remove SUTAZINE+ from the row and result in a loss of weed control.
- Corn can be planted again without working the field if circumstances such as flooding, insects, or disease result in a poor stand of corn.

**Cultivation:**

- Should weeds develop, a shallow cultivation or rotary hoe will generally result in better weed control.
- A shallow cultivation is less than 1/2 the depth of incorporation.

**Sequential Herbicide Applications**

- Accent® herbicide, Beacon® herbicide  
A sequential treatment with Accent or Beacon is recommended for escapes of Johnsongrass and Shattercane.
- 2,4-D, Banvel® herbicide  
A sequential treatment with 2,4-D or Banvel is recommended for escapes of broadleaves.
- Use Accent, Beacon, 2,4-D, and Banvel at recommended rates found on the manufacturer's label.

**Weeds Controlled and Use Rates:**

- Consult Table 1 below.
- NOTE COMMENTS AND RESTRICTIONS IN TABLE 1.

**SUTAZINE+**  
**BROADCAST RATE PER ACRE**

**TABLE 1**

ANNUAL WEEDS	SCIENTIFIC NAME	USE RATE IN PINTS	COMMENTS AND RESTRICTIONS
Barnyardgrass (Watergrass)	<i>Echinochloa crus-galli</i>	5 1/4 to 7	<b>GENERAL:</b> <ul style="list-style-type: none"> <li>• Should weeds develop, a shallow cultivation at no more than 2 inches depth, or incorporation or injection will generally result in better weed control.</li> <li>• Use the higher rates for medium and fine textured soils.</li> </ul> <b>FALL APPLICATIONS:</b> <ul style="list-style-type: none"> <li>• Do not use fall application for suppression of chatterbox.</li> <li>• Use only in Minnesota, northern Iowa north of I-80, northern Missouri east of Highway 14, South Dakota east of Missouri River, Illinois north of I-80.</li> <li>• Apply and incorporate 10 1/2 pints per acre in the late fall.</li> <li>• Impregnated dry bulk fertilizer may be used in fall application.</li> </ul>
Bermudagrass (seedling)	<i>Cynodon dactylon</i>	5 1/4 to 7	
Carpetweed	<i>Mollugo verticillata</i>	5 1/4 to 7	
Cocklebur, common	<i>Xanthium pensylvanicum</i>	5 1/4 to 7	
Crabgrass	<i>Digitaria</i> spp.	5 1/4 to 7	
Florida pusley	<i>Richardia scabra</i>	5 1/4 to 7	
Foxtail, giant	<i>Setaria faberii</i>	5 1/4 to 7	
Foxtail, green	<i>Setaria viridis</i>	5 1/4 to 7	
Foxtail, yellow	<i>Setaria lutescens</i>	5 1/4 to 7	
Goosegrass	<i>Eleusine indica</i>	5 1/4 to 7	
Groundcherry, annual	<i>Physalis lanceifolia</i>	5 1/4 to 7	
Johnsonweed	<i>Datura stramonium</i>	5 1/4 to 7	
Johnsongrass (seedling) <sup>1</sup>	<i>Sorghum halepense</i>	7	
Kochia	<i>Kochia scoparia</i>	5 1/4 to 7	
Lambsquarters, common	<i>Chenopodium album</i>	5 1/4 to 7	
Morningglory, annual	<i>Ipomoea purpurea</i>	5 1/4 to 7	
Mustards	<i>Brassica</i> spp.	5 1/4 to 7	
Nightshade	<i>Solanum</i> spp.	5 1/4 to 7	
Oats, wild	<i>Avena fatua</i>	5 1/4 to 7	
Pigweed, prostrate	<i>Amaranthus graecizans</i>	5 1/4 to 7	
Pigweed, redroot	<i>Amaranthus retroflexus</i>	5 1/4 to 7	
Pigweed, smooth	<i>Amaranthus hybridus</i>	5 1/4 to 7	
Panicum, fall	<i>Panicum dichotomiflorum</i>	5 1/4 to 7	
Purslane, common	<i>Portulaca oleracea</i>	5 1/4 to 7	
Ragweed	<i>Ambrosia</i> spp.	5 1/4 to 7	
Sandbur, field	<i>Cenchrus pauciflorus</i>	7	
Sicklepod	<i>Cassia obtusifolia</i>	5 1/4 to 7	
Smartweed	<i>Polygonum</i> spp.	5 1/4 to 7	
Sorghum, volunteer <sup>1</sup>	<i>Sorghum</i> spp.	5 1/4 to 7	
Velvetleaf	<i>Abutilon theophrasti</i>	5 1/4 to 7	
Witchgrass	<i>Panicum capillare</i>	5 1/4 to 7	



Page 10  
**SUTAZINE+ Booklet**  
 SUT248B.RSC - RS-052092C

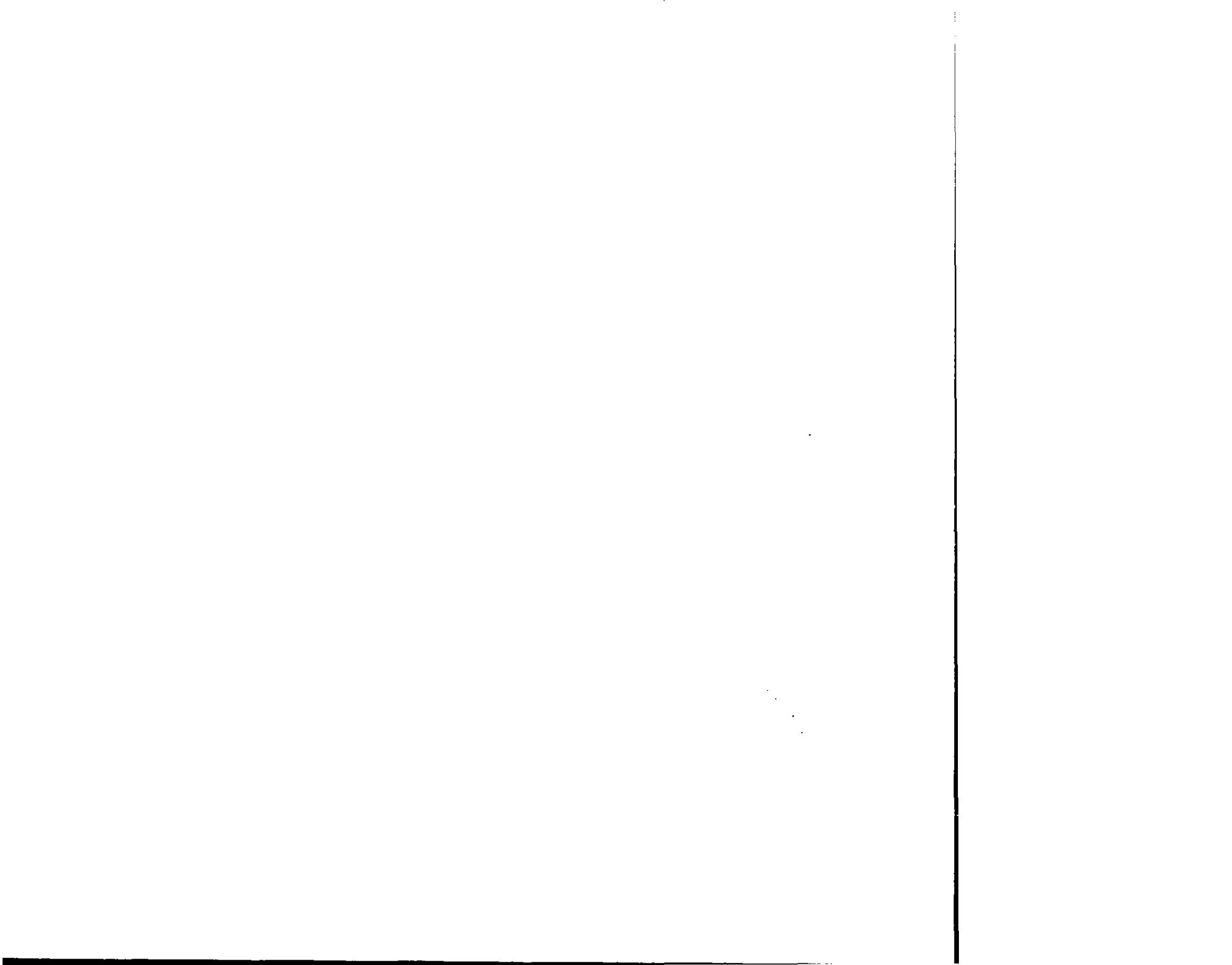
ANNUAL GRASSES	SCIENTIFIC NAME	USE RATE IN PINTS	COMMENTS AND RESTRICTIONS
<b>TOUGH ANNUAL GRASSES AND PERENNIAL WEEDS</b>			
Bermudagrass rhizome (Southeast Region only)	<i>Cynodon dactylon</i>	7 to 10 1/2	<ul style="list-style-type: none"> <li>• Apply and disc incorporate SUTAZINE+ just before planting.</li> <li>• Disc must be set to cut 6 inches deep.</li> <li>• Use the higher rate on medium to fine textured soils and for heavy infestations.</li> <li>• Incorporate a second time with a disc at right angles to the first with the disc set to operate no deeper than on the first pass.</li> <li>• Cultivate at least once and preferably twice.</li> <li>• The rhizomes and stolons must be cut up thoroughly so that four or less nodes remain on a strand.</li> </ul>
Hemp dogbane (Suppression only)	<i>Apocynum cannabinum</i>	10 1/2	<ul style="list-style-type: none"> <li>• Use SUTAZINE+ for early and midseason suppression.</li> <li>• Cultivation or application of a postemergence herbicide recommended for hemp dogbane will aid in extending control to late season.</li> </ul>
Johnsongrass, rhizome (Suppression only)	<i>Sorghum halepense</i>	7 to 10 1/2	<ul style="list-style-type: none"> <li>• A program of plowing and discing followed by SUTAZINE+ will give a good control of seedlings and greatly reduce early competition from rhizome plants.</li> <li>• Apply and disc incorporate SUTAZINE+ just before planting.</li> <li>• Sequential treatment with a postemergence grass herbicide recommended for Rhizome Johnsongrass is recommended for season-long control of escape rhizome plants.</li> <li>• Incorporate a second time with a disc at right angles to the first with the disc set to operate no deeper than on the first pass.</li> <li>• Cultivate at least once and preferably twice.</li> <li>• Where possible, disc 2 or 3 times at 4 to 6 week intervals in the fall and winter.</li> <li>• If multiple fall discings cannot be done, fall plowing followed by several discings in the spring before planting will cut rhizomes into small pieces and bring them to the surface where both the weather and SUTAZINE+ will kill or weaken them.</li> </ul>
Nutsedge, purple Nutsedge, yellow Texas Panicum (Southeast Region only)	<i>Cyperus rotundus</i> <i>Cyperus esculentus</i> <i>Panicum texanum</i>	7 to 10 1/2	<ul style="list-style-type: none"> <li>• Use the higher rates on medium and fine textured soils and for heavy infestations.</li> <li>• Existing stands of nutsedge must be turned and chopped thoroughly before treatment.</li> <li>• Cultivation is recommended in addition to SUTAZINE+ in fields with moderate to heavy infestations.</li> </ul>

17-10-00

ANNUAL GRASSES	SCIENTIFIC NAME	USE RATE IN PINTS	COMMENTS AND RESTRICTIONS
Shattercane (Suppression only)	<i>Sorghum vulgare</i>	10 1/2	<ul style="list-style-type: none"> <li>• Apply and incorporate immediately before planting for suppression and reduced early competition from shattercane. Do not delay incorporation from application.</li> <li>• Sequential treatment with a postemergence grass herbicide recommended for shattercane is recommended for season-long control of escape shattercane plants.</li> <li>• On continuous corn acreage with high shattercane seed populations, rotation to another crop such as soybeans where FUSILADE® 2000 herbicide can be used to control the population in alternate years.</li> <li>• Suppression may be improved if all the following practices are followed:               <ul style="list-style-type: none"> <li>- fall or spring moldboard plowing.</li> <li>- soil should be well-worked with a disc and dry enough to permit good incorporation of the herbicide.</li> <li>- all trash should be worked into the soil before application.</li> <li>- delay application until soil warms to a constant 55 degrees or higher temperature.</li> <li>- plant immediately after application and incorporation.</li> <li>- cultivate immediately if shattercane emerges. This cultivation should be shallower than the depth of incorporation of the SUTAZINE+ 6.7-E herbicide.</li> </ul> </li> </ul>
Signalgrass, broadleaf (Suppression only)	<i>Bracharia platyphylla</i>	10 1/2	<ul style="list-style-type: none"> <li>• Use SUTAZINE+ for early and midseason suppression.</li> <li>• Cultivation or application of a postemergence herbicide recommended for broadleaf signalgrass will aid in extending control in late season.</li> </ul>

<sup>1</sup>Cultivation is suggested in addition to SUTAZINE+ treatment in fields with moderate to heavy infestations.

9516/11



## APPENDIX 1

### Procedure for Testing the Compatibility of SUTAZINE+ Alone or with Tankmix Combinations with Fluid Fertilizers.

The following procedure is suggested for determining whether or not SUTAZINE+ may be combined with a specific fluid fertilizer or tank mix herbicide for spray tank application.

#### Materials Required:

1. SUTAZINE+
2. Fluid fertilizer
3. Adjuvant for spray tankmix combinations: Compex™, Sponto™ 168-D, Unite™, or equivalent. The adjuvant which provides the best emulsification depends on the specific fertilizer under consideration.
4. Two one-quart, wide mouth glass jars with lid or stopper.
5. Measuring spoons. A 25 mL pipette or graduated cylinder provides more accurate measurement. 1 tablespoon equals 3 teaspoons equals approximately 5 milliliters.
6. Measuring cup, 8 ounces (257 mL).

#### Procedure:

- Pour a pint or about 473 mL of the fluid fertilizer or water into each of the quart jars.
- Add adjuvant to one of the jars and mix. See Table 3 footnote for rate.
- If a tankmix is being tested, premix the wettable powders in 1/8 cup of water prior to addition to the pint of fluid fertilizer or water.
- The order of addition is wettable powders first, followed by flowables and SUTAZINE+ last.
- Add SUTAZINE+ to both jars. See Table 3 for rate to use.
- Close both jars with lid or stopper and mix the contents by turning the jars upside down ten times.
- Inspect the surface and body of the mixtures:
  - Immediately after completing the jar inversions.
  - After allowing the jars to stand quietly for 30 minutes.
  - And then again after turning the jars upside down 10 times after the 30 minute wait.

#### Evaluation:

- If a uniform mixture cannot be made, the mixture should not be used.
- If either mixture remains uniform for 30 minutes, the combination may be used.
- Should either mixture separate after 30 minutes, but readily remixes uniformly with ten jar inversions, the mixture can be used if adequate agitation is maintained in the tank.
- If adjuvant is needed, add it first at a rate of 3 pints per 100 gallons of fluid fertilizer or water.
- Foaming can be minimized by using moderate agitation.
- If nondispersible oil, sludge, or clumps of solids form in the mixture, the combination should not be used.

210726

**RATE TABLE FOR SUTAZINE+ AND  
ADJUVANT\* WITH THE FLUID FERTILIZER**

**TABLE 3**

GALLONS OF FLUID FERTILIZER TO BE APPLIED PER ACRE	SUTAZINE+ TO BE ADDED TO 1 PINT OF FERTILIZER PER POUND OF ACTIVE	
	mL	tsp.
10	10 1/2	2
15	7	1 1/3
20	5 1/4	1
25	4 1/4	3/4
30	3 1/2	2/3
40	2 1/2	1/2

\*Two (2) milliliters or one-half (1/2) teaspoon of adjuvant should be added to 1 pint of fluid fertilizer in order to equal the rate of 3 pints of adjuvant per 100 gallons of fluid fertilizer.

## APPENDIX II

### Impregnation on Dry Bulk Fertilizers

- CAUTION: SUTAZINE+ alone and in combination with other herbicides must not be impregnated on ammonium nitrate, potassium nitrate, or sodium nitrate fertilizers. Such mixtures may cause explosion and fire.
- Do not combine SUTAZINE+ with single (0-20-0) or treble (0-46-0) superphosphate.
- Consult your local dealer for more details on impregnation of dry bulk fertilizers
- SUTAZINE+ may be impregnated on many dry bulk fertilizers and applied and incorporated into the soil either in the Fall before the ground freezes or before planting for the control of many grassy and broadleaf weeds.
- All individual state regulations relating to bulk fertilizer blending, registration, labeling, and application are the responsibility of the individual and/or company selling the herbicide and fertilizer mixtures.
- All SUTAZINE+ label and supplementary literature instructions and precautions regarding rates, soil types, soil incorporation, applications, and other directions must be followed when impregnating on dry bulk fertilizer.

### APPROVED DRY BULK FERTILIZER INGREDIENTS FOR USE WITH SUTAZINE+ ALONE

**TABLE 4**

FERTILIZER INGREDIENT	N	P	K
Ammonium sulfate	21	0	0
Ammonium phosphate-sulfate	16	20	0
Diammonium phosphate	18	46	0
Monoammonium phosphate	1	56	0
Potassium chloride			60
Potassium sulfate			52
Urea*			0

\*Some ureas may be phytotoxic when high rates are applied to corn. Use only urea rates known to be safe for corn application.

- Uniform impregnation of the SUTAZINE+ on dry bulk fertilizer particles and uniform application in the field are necessary to assure good results.
- A minimum of 200 and a maximum of 700 pounds of approved impregnated ingredients from Table 4 must be applied per acre. For impregnation rate recommendations see Table 5.
- Bulk fertilizer impregnated with SUTAZINE+ should be applied immediately. NOT STORED. All bulk containers should be tightly covered while the products are being transported and applied to reduce chances of SUTAZINE+ loss via volatilization.

**RATE CHART OF IMPREGNATION OF DRY BULK FERTILIZER  
WITH SUTAZINE+ QUARTS PER TON OF FERTILIZER**

**TABLE 5**

FERTILIZER RATE POUNDS PER ACRE	SUTAZINE+ RATE PER ACRE		
	5 1/4 pts/A	7 pts/A	10 1/2 pts/A
200	26 1/4 qts	35 qts	52 1/2 qts
250	21 qts	28 qts	42 qts
300	17 1/2 qts	23 1/3 qts	35 qts
350	14 1/2 qts	20 qts	30 qts
400	13 1/4 qts	17 1/2 qts	26 1/4 qts
450	11 2/3 qts	15 1/2 qts	23 1/3 qts
500	10 1/2 qts	14 qts	21 qts
550	9 1/2 qts	12 3/4 qts	19 qts
600	8 3/4 qts	11 2/3 qts	17 1/2 qts
650	8 qts	10 3/4 qts	16 1/4 qts
700	7 1/2 qts	10 qts	15 qts

- Use a closed rotary drum mixer or similar type of closed blender equipped with suitable spray equipment.
- The spray nozzle should be positioned inside of the mixer to provide uniform spray coverage of the tumbling fertilizer and provide a uniform fine spray pattern.
- SUTAZINE+ is a relatively viscous material, particularly at low temperatures around 20° F. At warmer temperatures of 45°-80°F the viscosity is significantly lower. See viscosity data later in this appendix.
- Physical properties of fertilizers vary in liquid absorptive capacity. When absorptivity is sufficient, simple spray impregnation of the fertilizer with the herbicides provides a satisfactory, dry mixture.
- When the absorptive capacity is not adequate, use of a drying agent is required to provide dry, free-flowing mixtures.
- Drying agent for spinning-disc applicators is:
  - Micro-Cel™ E calcium silicate powder - Manville Sales Corporation
- Drying agents for pneumatic applicators are:
  - Micro-Cel E calcium silicate powder - Manville Sales Corporation
  - Agsorb™ 16/30 RVM-MS granular clay - Oil-Dri Corporation
- Drying agents should be added separately and uniformly to the previously impregnated herbicide-fertilizer mixture to ensure that the mixture is free-flowing.
  - Generally the following amounts are sufficient:

01/17/10

- Micro-Cel E calcium silicate powder at less than 2% by weight
- Agsorb 16/30 RVM-MS granular clay at less than 5% by weight
  
- The amount of SUTAZINE+ actually required in the manufacture of individual fertilizer mixtures should be determined carefully for each production operation. This is necessary to ensure that the amount of SUTAZINE+ actually contained in the mixture applied to the soil represents the correct use rate.

**Physical Data**

- Specific Gravity 20/20°C: 1.019 (typical)
- Pounds/Gallon 20°C: 8/48 (typical)
- Flashpoint: >216°F (Setaflash closed cup)
- Viscosity: 1120 centipoise @ 20°F, 660 centipoise @ 32°F, 430 centipoise @ 45°F, 275 centipoise @ 60°F, 175 centipoise @ 80°F, and 145 centipoise at 95°F.



25 of 26

## STORAGE AND DISPOSAL

**PROHIBITIONS:** Do not contaminate water, food, or feed by storage or disposal. Open dumping is prohibited. Do not reuse empty container.

**STORAGE:** Keep container tightly closed when not in use. Do not store near seeds, fertilizers, or food stuffs. Can be stored at temperatures as low as minus 30°F.

**PESTICIDE DISPOSAL:** Rinse spray equipment. Pesticide wastes are acutely hazardous. Improper disposal of excess pesticide, spray mixture, or rinsate is a violation of Federal law. If these wastes cannot be disposed of by use according to label instructions, contact your State Pesticide or Environmental Control Agency, or the Hazardous Waste Representative at the nearest EPA Regional Office for guidance.

### CONTAINER DISPOSAL:

**Metal:** Triple rinse (or equivalent); then offer for recycling or reconditioning, or puncture and dispose of in a sanitary landfill, or by other procedures approved by State and local authorities.

**Plastic:** Triple rinse (or equivalent); then offer for recycling or reconditioning, or puncture and dispose of in a sanitary landfill, or by incineration, or, if allowed by State and local authorities, by burning. If burned, stay out of smoke.

### FOR BULK AND MINI-BULK CONTAINERS

**CONTAINER DISPOSAL:** Reseal container and offer for reconditioning, or triple rinse (or equivalent) and offer for recycling or reconditioning, or clean in accordance with manufacturer's instructions.

### CONTAINER PRECAUTIONS

Before refilling, inspect thoroughly for damage such as cracks, punctures, bulges, dents, abrasions, and damaged or worn threads on closure devices.

**REFILL ONLY WITH SUTAZINE+.** The contents of this container cannot be completely removed by cleaning. Refilling with materials other than SUTAZINE+ will result in contamination and may weaken container.

After filling and before transporting, check for leaks.

Do not refill or transport damaged or leaking container.

Circulation before dispensing is required.

**CONTAINER IS NOT SAFE FOR FOOD, FEED, OR DRINKING WATER!**

26.426

**IMPORTANT:** Read the entire Directions for Use and the Conditions of Sale and Warranty before using this product.

**CONDITIONS OF SALE AND LIMITED WARRANTY:**

The Directions for Use of this product are believed to be reliable and should be followed carefully. However, it is impossible to eliminate all risks inherently associated with the use of this product. Crop injury, ineffectiveness or other unintended consequences may result because of such factors as timing and method of application, weather and crop conditions, mixture with other chemicals not specifically recommended or other influencing factors in the use of the product, all of which are beyond the control of the seller. All such risks shall be assumed by Buyer and User, and Buyer and User agree to hold Seller harmless for any claims relating to such factors.

Seller warrants that this product conforms to the chemical description on the label and is reasonably fit for the purposes stated on the label, subject to the inherent risks referred to above, when used in accordance with directions under normal conditions of use. This warranty does not extend to the use of this product contrary to label instructions, or under abnormal conditions or under conditions not reasonably foreseeable to or beyond the control of Seller and Buyer and User assume the risk of any such use. SELLER DISCLAIMS ALL OTHER WARRANTIES EXPRESSED OR IMPLIED INCLUDING ANY WARRANTY OF FITNESS OR MERCHANTABILITY.

When Buyer or User claims losses or damages resulting from the use or handling of this product (including claims based on contract, negligence, strict liability or other legal theories), Buyer or User must promptly notify in writing Seller of any claims to be eligible to receive either of the remedies set forth below. The EXCLUSIVE REMEDY OF BUYER OR USER and the LIMIT OF LIABILITY of Seller will be, at the election of Seller, refund of the purchase price paid for product bought, or replacement of amount of product used. SELLER SHALL NOT BE LIABLE FOR CONSEQUENTIAL, SPECIAL OR INDIRECT DAMAGES RESULTING FROM THE USE OR HANDLING OF THIS PRODUCT AND SELLER'S SOLE LIABILITY AND BUYER'S AND USER'S EXCLUSIVE REMEDY SHALL BE LIMITED TO THE REFUND OF THE PURCHASE PRICE.

This product is sold only for uses stated on its label. No express or implied license is granted to use or sell this product under any patent in any country except as specified: Country: United States of America. Patent No. 4,021,224; 4,137,070.

- FUSILADE® and SUTAZINE®+ are trademarks of ICI Group Companies.
- Accent® is a trademark of E. I. du Pont de Nemours & Co. (Inc.).
- Agsorb™ is a trademark of Oil Dri Corporation of America.
- Banvel® is a trademark of Sandoz Crop Protection Corporation.
- Beacon® is a trademark of CIBA-GEIGY Corporation.
- Compex™ is a trademark of Kalo, Inc.
- Micro-Cel™ is a trademark of Manville Sales Corporation.
- Sponto™ is a trademark of Witco Corporation.
- Unite™ is a trademark of HACO, Inc.