

READ ENTIRE LABEL. USE STRICTLY IN ACCORDANCE WITH CAUTIONS, WARNINGS, AND DIRECTIONS, AND WITH APPLICABLE STATE AND FEDERAL REGULATIONS. USES, TIMING AND DOSAGE MAY VARY AS A CONSEQUENCE OF LOCAL WEATHER OR CONDITIONS. WE RECOMMEND REFERENCE TO STATE AGRICULTURAL EXTENSION SERVICE CONCERNING SPECIFIC USES.

DIRECTIONS

DO NOT RE-USE EMPTY DRUMS. RETURN TO DRUM CONDITIONER OR DESTROY BY PERFORATING OR CRUSHING AND BURYING IN A SAFE PLACE.

Prokil Endrin 1.6 Emulsive can be applied by conventional hydraulic sprayers or low volume ground applications (at not less than 20 gals. water per acre or by airplane sprayers at 5-15 gals. water per acre).

COTTON: Thrips, Cotton Fleahoppers: Early Season Control: 1.3 Pint per acre. Mid-Season Control: 1/2 Pint per acre. Late Season Control: 1 Pint per acre. **Bollweevil and Bollworm (not Pink Bollworm):** Early Season Control: Use 1 Pint per acre. Mid-Season and Late Season Control: Use 1 to 1.5 Pints per acre in a mixture with other recommended materials. **Cabbage Looper, Leaf Perforator, Salt Marsh Caterpillar, Lygus Bugs, Cutworms:** 1.3 gallon per acre in water for coverage. Do not apply within 5 days of hand-picking. Workers entering the field within 5 days after treatment should be protected. Toxicity to beneficial insects may be high if applied in great quantities.

972111 PROKIL

EPA Reg. No. 10168-4 AA

PROKIL ENDRIN 1.6

EMULSIFIABLE CONCENTRATE

ACTIVE INGREDIENTS	By Wt.
Endrin (hexachloroepoxyoctahydro-endo-endo-dimethanonaphthalene)	19.5%
Aromatic Petroleum Derivatives	73.0%
INERT INGREDIENTS	7.5%
TOTAL	100.0%
Contains 1.6 lb. Endrin per Gallon	



DANGER POISON



KEEP OUT OF REACH OF CHILDREN

— NOT FOR USE OR STORAGE IN OR AROUND THE HOME —

ANTIDOTE:

INTERNAL: If any of the insecticide is swallowed, give a tablespoon of salt in a glass of warm water. Repeat until vomit fluid is clear. Keep victim prone and quiet.

EXTERNAL: If skin is contacted, wash immediately with soap and water.

CALL A PHYSICIAN IMMEDIATELY!

NOTE TO PHYSICIAN: In case of poisoning administer barbiturates as for anti-convulsant therapy. Observe patient carefully since repeated treatment may be needed.

SEE SIDE PANEL FOR ADDITIONAL PRECAUTIONS!

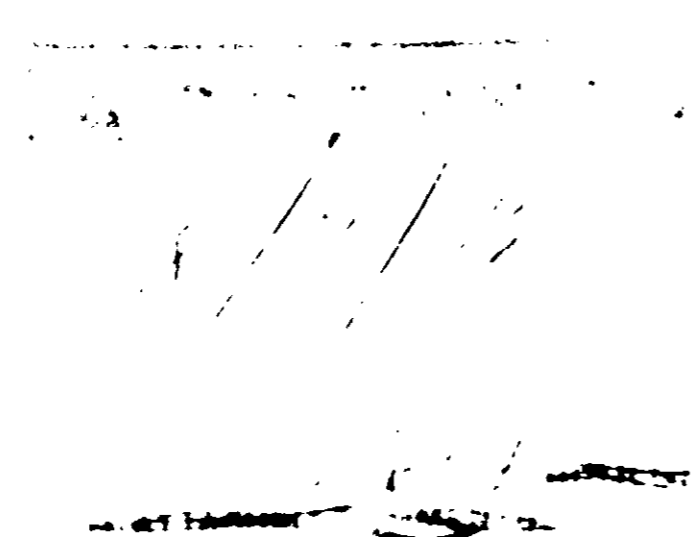
NET CONTENTS _____ LIQUID

CALIFORNIA (Plant)
P. O. Box 406
340 East Main St.,
Telephone: 348-5150
Calipatria, Calif. 92233

The Dune Company

AGRICULTURAL CHEMICALS

ARIZONA
Rt. 1, Box 33
Telephone: 627-2479
Somerton, Ariz. 85350



PROKIL END
Chlorine 1
Parathion S
ylox, thion
on labeling

POISONOUS
RAPIDLY AB
AROUS. FI


Keep awa
Do not us
Do not g
Do not b
Wash the
eating
Clean up
Do not us
Use clean

In case
and flush s
eyes, get m

N 1.6

By Wt.

.....	19.5%
.....	73.0%
.....	7.5%
.....	100.0%

SON 

IN

THE HOME —

a tablespoon of salt in a
 ep victim prone and quiet.
 ap and water.

!)

arbituxtes as for anti-con-
 treatment may be needed.

CAUTIONS!

111)

ny

ARIZONA

Rt. 1, Box 33

Telephone: 627-2479
 Somerton, Ariz. 85350

PROKIL ENDRIN compatible with the following:

Chlordane, Toxaphene, Thionex, Kelthane, Chlorobenzilate, Parathion, Malathion, Systox, Malathion, Guthion, Dithion, Bidrin, Cygon, Phosphamidon, Dylox, Ltnion, Trithion, Diazinon, Sevin. Observe all cautions and limitations on labeling of all products used in mixtures.

DANGER

**POISONOUS BY SKIN CONTACT, INHALATION OR SWALLOWING
 RAPIDLY ABSORBED THROUGH SKIN. SPRAY MIST EXTREMELY HAZAROUS.
 FIRE HAZARD!**

- Keep away from heat and open flame.
- Do not use, pour, spill or store near heat or open flame.
- Do not get in eyes, on skin, on clothing.
- Do not breathe spray mist.
- Wash thoroughly with soap and water after handling and before eating or smoking.
- Clean up spillage.
- Do not use indoors without adequate mechanical exhaust ventilation.
- Use clean clothing daily and wear clean, synthetic rubber gloves.

In case of contact, immediately remove all contaminated clothing and flush skin or eyes with plenty of water for at least 15 minutes; for eyes, get medical attention. Wash clothing before re-use.

DO NOT spray into or near fire or open flame. Do not smoke while spraying. Wear a mask or respirator of a type passed by the U.S. Bureau of Mines for Endrin protection. Keep away from children and domestic animals. Treatment should not be made to areas while they are occupied by unprotected humans or beneficial animals; they should be kept out of such treated areas for at least one hour after treatment.

DO NOT APPLY nor allow to drift where dairy animals or animals being finished for slaughter may be grazing. Do not graze dairy animals or animals being finished for slaughter on treated fields. Workers entering fields within five (5) days after application should wear protective clothing. Use this product for recommended purposes and at recommended dosages.

HIGHLY TOXIC to fish and wildlife. Birds feeding on treated area may be killed. Do not contaminate any body of water nor apply to any area not specified on the label. DO NOT apply when weather conditions favor drift from areas treated. DO NOT apply where runoff is likely to occur. DO NOT contaminate water by cleaning of equipment or disposal of wastes.

THIS PRODUCT IS HIGHLY TOXIC TO BLES exposed to direct treatment or residues on crops. Protective information may be obtained from your Cooperative Agricultural Extension Service.

NOTICE ON CONDITIONS OF SALE

Our recommendations for use of this product are based upon tests believed to be reliable. The use of this product being beyond the control of the manufacturer, no guarantee, expressed or implied, is made as to the effects of such or the results to be obtained if not used in accordance with directions or established safe practice. The buyer must assume all responsibility including injury or damage, resulting from its misuse as such, or in combination with other materials.