

GREENSECT

ACCEPTED
OCT 1 1968
UNDER THE FEDERAL INSECTICIDE ACT
FUNGICIDE AND RODENTICIDE ACT
REGISTERED UNDER NO. 10120 SUBJECT
TO ATTACHED CONDITIONS

TO CONTROL INSECTS THAT INFEST GREENS, FAIRWAYS AND LAWNS

- ACTIVE INGREDIENTS:90%
 - *Chloroform Technical
 - Aromatic Hydrocarbon Derivative Solvents
 - *Methanol
- INERT INGREDIENTS:10%
 - Calcium dodecylbenzene sulfonate
 - C₁₈ Fatty Alcohol Ether
 - *Consists of octachloro-d, 7-nitro-1,2,3,4-tetrahydro-1,2,4-triazine and related compounds.
 - *O, O-Dimethyl dithiophosphate of Methyl mercaptosuccinate

Apply to infested areas as follows:

WIREWORMS, CHINCH BUGS AND LARVAE OF JAPANESE BEETLE AND WHITE-FRINGED BEETLE: Use three ounces of GREENSECT for each 1,000 square feet, mixing with sufficient water to cover area. For one acre mix one gallon of GREENSECT with sufficient water to cover area. Wash into the soil after applying. This will give control for one season. For control of up to five years, apply GREENSECT at the rate of two to four gallons per acre or six to twelve ounces for each 1,000 square feet.

APHIDS AND SPIDER MITES ON ORNAMENTALS: Use GREENSECT at the rate of two ounces per gallon of water. Spray thoroughly with a wet coarse spray. Repeat when necessary.

ANTS: Mix 1/2 gallon of GREENSECT with sufficient water to cover one acre.

SOD WEB WORMS: Mix GREENSECT at the rate of one to two gallons in sufficient water to cover one acre. Water thoroughly before applying, but do not water for several days after treating.

CAUTION

KEEP OUT OF REACH OF CHILDREN

Harmful, may be fatal if swallowed. Contact with skin can cause toxic symptoms. Avoid breathing spray mist. In case of contact with skin, wash with soap and water. Avoid contamination of feed and foodstuffs. Flammable mixture. Keep away from heat or open flame. KEEP CHILDREN AND PETS OFF TREATED AREA UNTIL MATERIAL IS WASHED INTO SOIL AND LAWN IS DRY.

Keep out of any body of water. Fish may be killed. Birds feeding on treated areas may be harmed.

Notes: Grasshopper and Grasshopper and certain forms may be subject to so injury after use.

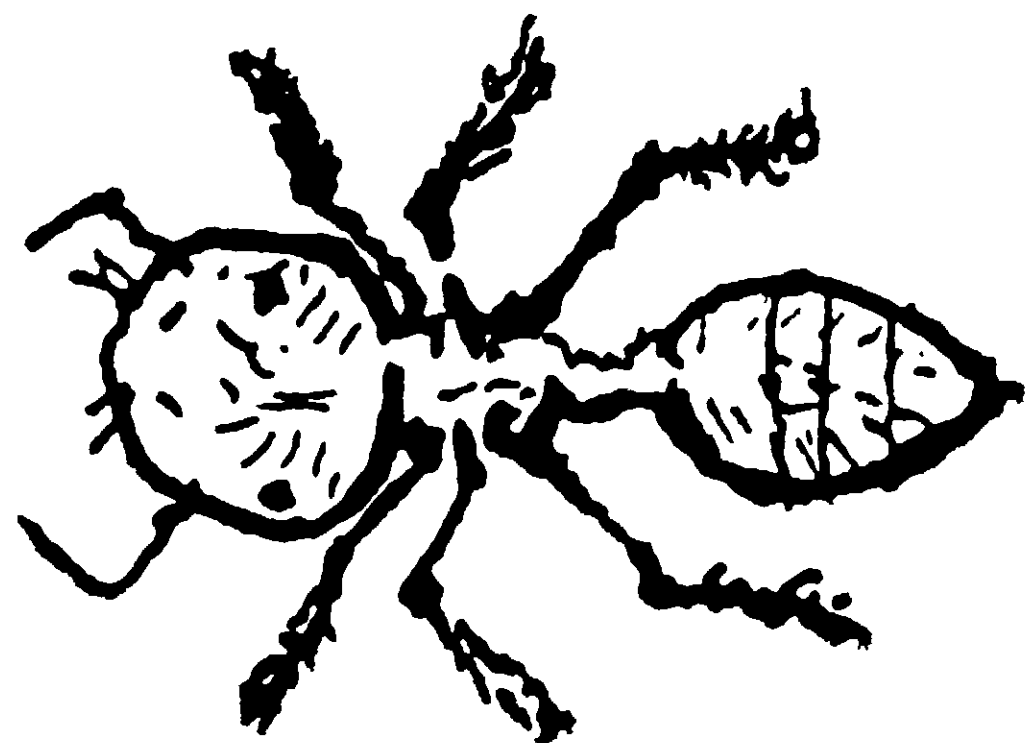
Net Content _____ Gallons

**DO NOT REUSE CONTAINER
DESTROY WHEN EMPTY**

H & K RED ANT KILLER

Active Ingredients

Technical Chlordane	15%
Equivalent to 2.0% Octachloro-4 7-Methanotetrahydroindane and 6.0% of related compounds.	
Heptachlor (heptachlorotetrahydro-4,7 7-methanoindene)	7.2%
Related Compounds	2.8%
Inert Ingredients	75%
	100%



WARNING

See back panel for additional warnings
KEEP OUT OF REACH OF CHILDREN

GUARANTEE

Buyer assumes all risks of use, storage, or handling of this material not in strict accordance with directions given herewith.

Dealers and Retailers are not responsible for this product or its use. If not fully satisfied, return the container with unused portion of powder to the manufacturer for refund of price of this package.

WARNING

**KEEP OUT OF REACH
OF CHILDREN**

Distributed By
H & K CO.

Box 415
Llano, Texas 78643

P. O. Box 1048
Big Spring, Texas 79720

INSTRUC

Sprinkle around entrance, 4 inches from entrance, 4 inches wide and cover with H & K Powder.

Then follow trails when going to and from work several places.

This product should be used where ants are working.

Use only in areas where ants are growing. This product is

WAR

May be fatal if swallowed. Do not get on skin with eyes or skin, flush for eyes get medical soap and water after eating or smoking. Keep treated areas.

This product is toxic to wildlife. Keep out of lake. Do not contaminate water equipment or disposal product only as specified.

**KEEP OUT OF REACH
AVOID INHALATION**