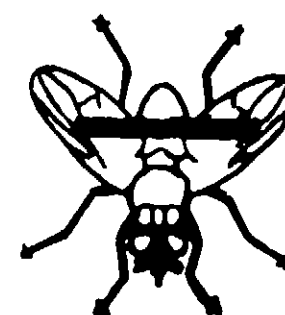


50 Lbs. Net

# Swift Bar Fly Mineral Block

Medicated

(For Cattle Only)



Prevents the breeding of horn flies and face flies in the manure of treated cattle when used as directed. Aids in the prevention of stomach worms (*Haemonchus* spp), hookworms (*Oesophygostomum* spp) and nodular worms (*banostomum* spp).

**PESTICIDALLY ACTIVE DRUG INGREDIENT:**

Phenothiazine\* ----- 3.5%  
PESTICIDALLY INERT INGREDIENTS\*\* ----- 96.5%

Total ----- 100.0%

\* Biologically assayed

\*\* Refers to feed and mineral ingredients which are neither insecticides nor drugs.

**GUARANTEED ANALYSIS**

Calcium (Ca) -----	Not More Than -----	12.00 %
Calcium (Ca) -----	Not Less Than -----	10.00 %
Phosphorus (P) -----	Not Less Than -----	5.00 %
Salt (NaCl) -----	Not More Than -----	51.00 %
Salt (NaCl) -----	Not Less Than -----	46.00 %
Iodine (I) -----	Not Less Than -----	0.002 %

**\*\* INGREDIENTS**

Salt, defluorinated phosphate, meat meal tankage, steamed bone meal, dextrin, calcium carbonate, cane molasses, magnesium oxide, manganous oxide, iron oxide, iron carbonate, zinc oxide, copper oxide, cobalt sulfate, potassium iodide, anise oil.

MANUFACTURED BY SWIFT & CO.,  
GENERAL OFFICE, CHICAGO, ILL. 60601

**DIRECTIONS FOR USE**

Cattle should consume 0.25 ounces of Swift Bar Fly Mineral Blocks-Medicated per day for each 100 lbs. body weight daily.

Self feed these blocks continuously as the sole source of salt. Cattle should be observed closely to assure a consumption rate of 0.25 ounce per 100 pounds body weight (2 ounces per 800 pound individual) daily.

Locate the mineral near their watering place.

Do not feed any other salt or mineral. Swift Bar Fly Mineral Blocks-Medicated is designed specifically for range grass. The active ingredient of Swift Bar Fly Mineral Blocks-Medicated has been biologically tested against the horn fly and guaranteed by the manufacturer to prevent the breeding of an average of 90% or more of the horn flies in the manure of treated cattle when used as directed.

For maximum protection against horn flies, cattle should be sprayed at the start of the fly season, and then supplied with Swift Bar Fly Mineral Blocks-Medicated continuously beginning several weeks before the fly season until all adult horn flies have disappeared in the fall. Swift Bar Fly Mineral Blocks-Medicated prevents the breeding of horn flies in the manure of treated cattle, but does not affect the existing adult flies.

Since face flies migrate from farm to farm it is essential that the larvicide program be carried out on an area basis to assist in the reduction of the adult face fly population.

**WARNING: KEEP OUT OF REACH OF CHILDREN.**

DO NOT FEED TO LACTATING DAIRY ANIMALS

OCCASIONAL SENSITIVITY TO PHENOTHIAZINE HAS BEEN REPORTED IN CATTLE. CONSULT VETERINARIAN BEFORE USING IN SEVERELY DEBILITATED ANIMALS. THIS TREATMENT WILL NOT AFFECT THE POPULATION OF EXISTING ADULT FLIES

L-11-71

ACCEPTED

EPA Registration No. 10101-13

2-16-72

10101-13