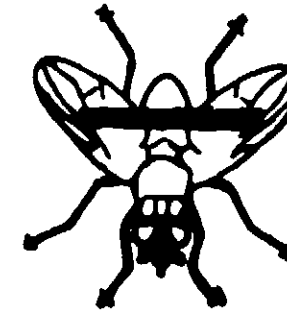


33-1/8 Lbs. Net

# Swift Bar Fly Range Block

Medicated

(For Cattle Only)



Prevents the breeding of horn flies and face flies in the manure of treated cattle when used as directed. Aids in the prevention of stomach worms (*Haemonchus* spp), hookworms (*Oesophagostomum* spp) and nodular worms (*bunostomum* spp).

**PESTICIDALLY ACTIVE DRUG INGREDIENT:**

Phenothiazine\* ----- 0.55%  
**PESTICIDALLY INERT INGREDIENTS\*\*** ----- 99.45%

Total ----- 100.0%

\* Biologically assayed

\*\* Refers to feed and mineral ingredients which are neither insecticides nor drugs.

**GUARANTEED ANALYSIS**

Crude Protein -----	Not Less Than -----	22.00 %
(This includes not more than 7% equivalent protein from non-protein nitrogen)		
Crude Fat -----	Not Less Than -----	1.00 %
Crude Fiber -----	Not More Than -----	7.00 %
Calcium (Ca) -----	Not More Than -----	10.00 %
Calcium (Ca) -----	Not Less Than -----	9.00 %
Phosphorus (P) -----	Not Less Than -----	1.25 %
Salt (NaCl) -----	Not More Than -----	15.00 %
Salt (NaCl) -----	Not Less Than -----	13.00 %
Iodine (I) -----	Not Less Than -----	0.001%

**\*\* INGREDIENTS**

Plant protein products, grain products, cane molasses, dehydrated alfalfa meal (preserved with ethoxyquin), meat and bone meal, urea, defluorinated phosphate, calcium carbonate, salt, iron oxide, magnesium oxide, manganous oxide, iron carbonate, copper oxide, cobalt sulfate, zinc oxide, potassium iodide, anise oil, D-activated animal sterol (source of vitamin D3), vitamin A palmitate, vitamin E supplement and lignin sulfonate 1.00%.

MANUFACTURED BY SWIFT & CO.,  
GENERAL OFFICE, CHICAGO, ILL. 60604

**DIRECTIONS FOR USE**

Feed 0.1 pound of Swift Bar Fly Range Block-Medicated for each 100 lbs. of body weight. Supply this block at the rate of 25 to 30 per hundred cattle. The blocks should be distributed over a large area. Self feed these blocks continuously as the sole source of salt. Cattle should be observed closely to assure a consumption rate of 0.1 pound of block per 100 pounds of body weight daily.

The active ingredient of Swift Bar Fly Range Block-Medicated has been biologically tested against the horn fly, and guaranteed by the manufacturer to prevent the breeding of an average of 90% or more of the horn flies in the manure of treated cattle when used as directed.

For maximum protection against horn flies, cattle should be sprayed at the start of the fly season, and fed Swift Bar Fly Range Block-Medicated continuously beginning several weeks before the fly season until all adult horn flies have disappeared in the fall. Swift Bar Fly Range Block-Medicated prevents the breeding of horn flies in the manure of treated cattle, but does not affect any existing adult flies.

**WARNING: KEEP OUT OF REACH OF CHILDREN.**

DO NOT FEED TO LACTATING DAIRY ANIMALS.

OCCASIONAL SENSITIVITY TO PHENOTHIAZINE HAS BEEN REPORTED IN CATTLE. CONSULT VETERINARIAN BEFORE USING IN SEVERELY DEBILITATED ANIMALS. THIS TREATMENT WILL NOT AFFECT THE POPULATION OF EXISTING ADULT FLIES.

3-11-71

**ACCEPTED**

2-18-72

UNDER THE FEDERAL FOOD, DRUG, AND COSMETICS ACT

EPA Registration No. 10101-9

*Comments*

ACCEPTED WITH COMMENTS