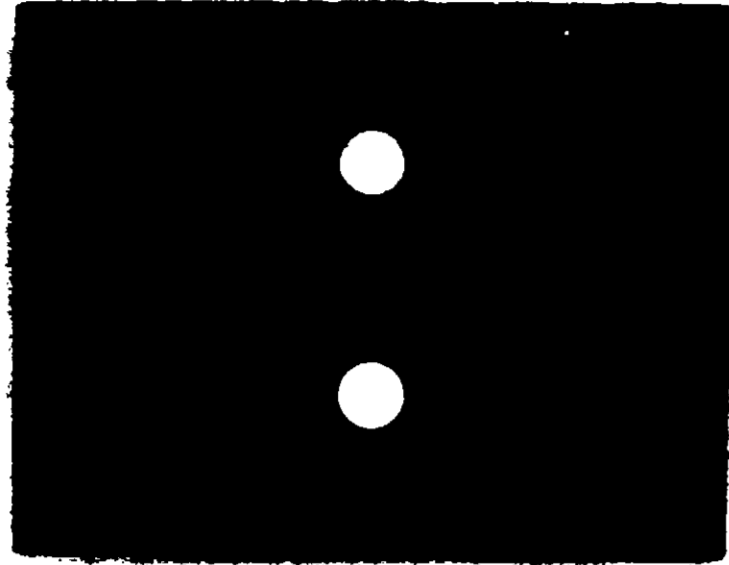


REGISTRATION NO. 10090-2

Easy to Apply



Prevents DECAY

DRY ROT

MOLD

ACTIVE INGREDIENT

Copper Naphthenate

INERT INGREDIENT

Mineral Spirits 87 1/2%

Termites

ROT NOT No. 1 ONE PINT

CAUTION
HARMFUL OR IRRITATING
KEEP OUT OF THE REACH OF CHILDREN
SEE CAUTIONS ON BACK PANEL

DIRECTIONS

Dip in ROT NOT a minute or two. (If material has been "waterproofed" give it a little longer.) Wring out excess. Hang up to dry.

Small pieces may be dipped. Leave in until they absorb all they can. For larger pieces, brush ROT NOT on, very heavily. Flow it on, do not brush it out. It can also be sprayed on.

Do not thin—use it full strength.

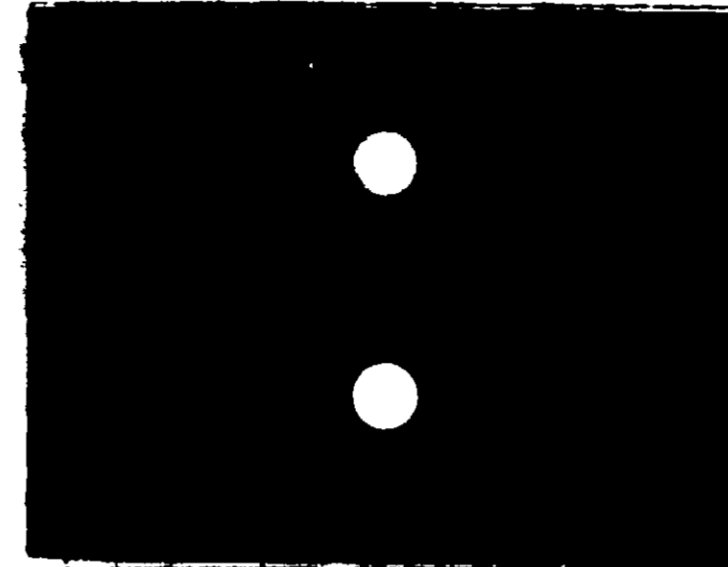
use precautions usual in painting. ROT NOT cannot be used over paint.

INFLAMMABLE WHILE WET

Guaranteed Metal Content. ROT NOT is the same preservative the Navy and Army used in the war.

KEEP OUT OF THE REACH OF CHILDREN.

Easy to Apply



Prevents DECAY

DRY ROT

MOLD

Termites

ROT NOT No. 1 ONE PINT

CONTAINS PETROLEUM DISTILLATE. If Swallowed, Do Not Induce Vomiting. CALL PHYSICIAN IMMEDIATELY. COMBUSTIBLE. Keep away from heat and open flame. Use with adequate ventilation. Avoid prolonged contact with skin and breathing of vapor or spray mist. Do not transfer contents to bottles or other unlabeled containers. Close container after each use.

2 KINDS:

ROT NOT Number 1

GREEN. For materials that will not be painted over. It colors them light green and will "bleed" through paint unless sealed.

ROT NOT Number 2

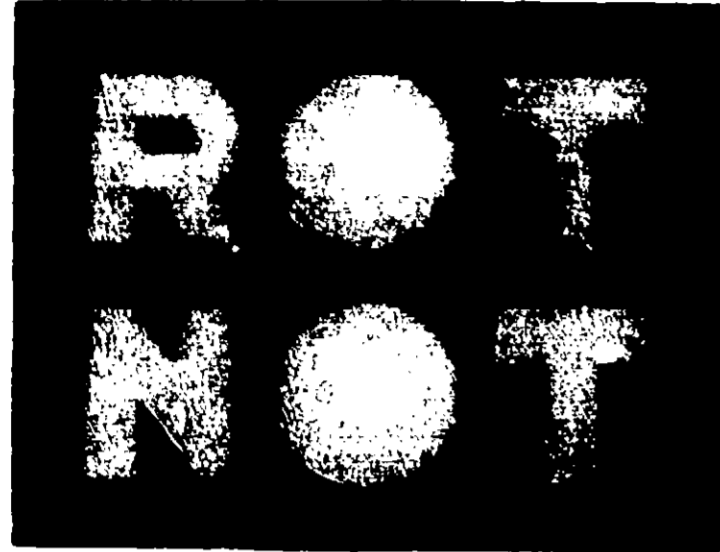
PALE AMBER. Leaves almost no color after drying. For materials to be painted or left "natural".

1

ACCEPTED
8/27/68
UNION OF THE FEDERAL INSPECTIVE
FURNACE AND ROENTICIDE ACT
FOR ESTABLISHMENT ON REGISTERED UNDER 10090-2 SUBJECT TO ATTACHED COMMENTS.

REGISTRATION NO. 10090-2

Easy to Apply



Prevents

DECAY

DRY ROT

MOLD

Termites

ACTIVE INGREDIENT

Copper Naphthenate

INERT INGREDIENT

Mineral Spirits 87½%

ROT NOT No. 1 ONE PINT

CAUTION!

HARMFUL OR FATAL IF SWALLOWED
KEEP OUT OF THE REACH OF CHILDREN
SEE CAUTIONS ON BACK PANEL

DIRECTIONS


for using either kind:
Number 1 or Number 2

**Rope, Fishing Line,
Awnings, Canvas**

Dip in ROT NOT a minute
or two. (If material has
been "waterproofed" give
it a little longer.) Wring
out excess. Hang up to dry.

On WOOD

Small pieces may be dipped.
Leave in until they absorb
all they can. For larger
pieces, brush ROT NOT on,
very heavily. Flow it on,
do not brush it out. It can
also be sprayed on.

 Do not thin—use
it full strength.

use precautions usual in
painting. ROT NOT cannot
be used over paint.

INFLAMMABLE WHILE WET

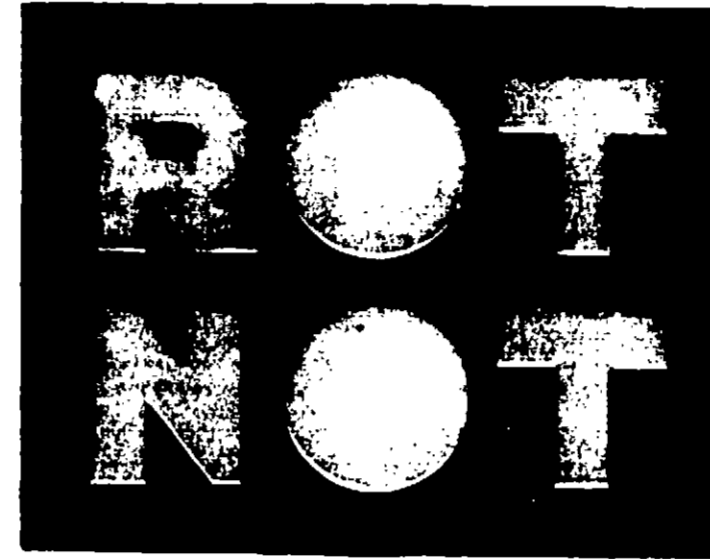
Guaranteed Metal Content.
ROT NOT is the same pre-
servative the Navy and
Army used in the war.


**INDUSTRIAL PAINT
MANUFACTURING CO.**

Mobile, Ala., U. S. A.

KEEP OUT OF THE REACH OF CHILDREN.

Easy to Apply



Prevents

DECAY

DRY ROT

MOLD

Termites

ROT NOT No. 1 ONE PINT

CONTAINS PETROLEUM DISTILLATE. If Swallowed, Do Not Induce
Vomiting. CALL PHYSICIAN IMMEDIATELY. COMBUSTIBLE. Keep
away from heat and open flame. Use with adequate ventilation.
Avoid prolonged contact with skin and breathing of vapor or spray mist.
Do not transfer contents to bottles or other unlabeled containers. Close
container after each use

Preserves

ROPE

CANVAS

WOOD

AWNINGS

Fishing Line

2 KINDS:

ROT NOT Number 1

GREEN. For materials that
will not be painted over. It
colors them light green and
will "bleed" through paint
unless sealed.

ROT NOT Number 2

PALE AMBER. Leaves almost
no color after drying. For
materials to be painted or
left "natural".

 Be sure you
have the kind you want

This is ROT NOT

Number

8/17/65