

REGISTRATION NO. 10090-1

**Easy to Apply**



**Prevents**

**DECAY**

**DRY ROT**

**ACTIVE INGREDIENT**

Zinc Naphthenate

**MOLD**

**INERT INGREDIENT**

Mineral Spirits 64%

**Termites**

**ROT NOT No. 2 ONE QUART**

**CAUTION!**

**HARMFUL OR FATAL IF SWALLOWED  
KEEP OUT OF THE REACH OF CHILDREN**

SEE CAUTIONS ON BACK PANEL

**DIRECTIONS**

for using Either kind:  
Number 1 or Number 2

**ROPE, Fishing Line,  
AWNINGS, CANVAS**

Dip in ROT NOT for a minute or two. (If material has been "water-proofed" give it a little longer) Wring out excess. Hang up to dry

**On WOOD**

Small pieces may be dipped. Leave in until they absorb all they can. For larger pieces, brush ROT NOT on, as heavily as possible. Flow it on, do not brush it out. It can also be applied by spraying.

Do not thin use it full strength.

use precautions usual in painting. ROT NOT cannot be used over paint

**INFLAMMABLE WHILE WET**

Guaranteed Metal Content ROT NOT is the same preservative the Navy and Army used in the war

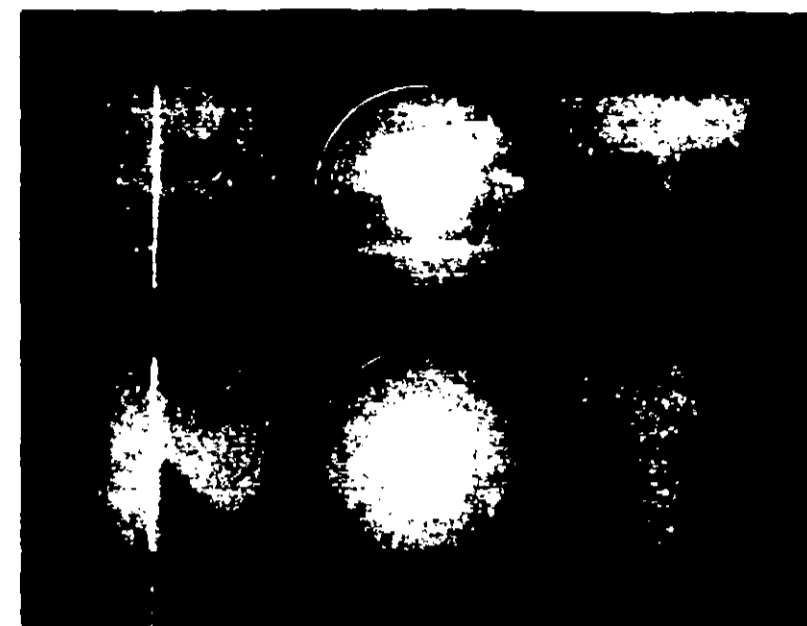


**INDUSTRIAL PAINT  
MANUFACTURING CO.**

**Birmingham 1, Ala., U. S. A.**

KEEP OUT OF THE REACH OF CHILDREN.

**Easy to Apply**



**Prevents**

**DECAY**

**DRY ROT**

**MOLD**

**Termites**

**ROT NOT No. 2 ONE QUART**

**CONTAINS PETROLEUM DISTILLATE. If Swallowed Do Not Induce Vomiting CALL PHYSICIAN IMMEDIATELY. COMBUSTIBLE. Keep away from heat and open flame. Use with adequate ventilation. Avoid prolonged contact with skin and breathing of vapor or spray mist. Do not transfer contents to bottles or other unlabeled containers. Use container after each use.**

**Preserves**

**ROPE  
CANVAS  
WOOD  
AWNINGS  
Fishing Line**

**2 KINDS:**

**ROT NOT Number 1**

**GREEN.** For materials that will not be painted over. It colors them light green and will "bleed" through paint unless sealed

**ROT NOT Number 2**

**PALE AMBER.** Leaves almost no color after drying. For materials to be painted or left "natural"

**Be Sure**

**you have the kind you want**

**This is ROT NOT**

**Number**