

10088-117

5/11/2010

6/1



UNITED STATES ENVIRONMENTAL PROTECTION AGENCY
WASHINGTON, D.C. 20460

OFFICE OF
PREVENTION, PESTICIDES
AND TOXIC SUBSTANCES

Mr. Adam Swader
Athea Laboratories, Inc.
P.O. Box 240014
Milwaukee, WI 53224

MAY 11 2010

Subject: Label Notification(s) for Pesticide Registration 2007-4

Dear Mr. Swader:

The Agency is in receipt of your Application(s) for Pesticide Notification under Pesticide Registration Notice (PRN) 2007-4 dated for March 25, 2010

EPA Registration Number: 10088-117 IR 25

The Registration Division (RD) has conducted a review of this request for applicability Under PRN 2007-4 and finds that the label change(s) requested falls within the scope of PRN-2007-4. The label has been date-stamped "Notification" and will be placed in our records.

Please be reminded that 40 CFR Part 156.140(a)(4) requires that a batch code, lot number, or other code identifying the batch of the pesticide distributed and sold be placed on non-refillable containers. The code may appear either on the label (and can be added by non-notification/PR Notice 98-10) or durably marked on the container itself.

If you have any questions, please contact Melody Banks on 703 305-5413.

Sincerely,

Richard Gebken
Product Manager
Insecticide Branch
Registration Division (7504P)



United States
Environmental Protection Agency
Washington, DC 20460

<input type="checkbox"/>	Registration
<input type="checkbox"/>	Amendment
<input checked="" type="checkbox"/>	Other

OPP Identifier Number

Application for Pesticide - Section I

1. Company/Product Number 10088-117	2. EPA Product Manager	3. Proposed Classification <input checked="" type="checkbox"/> None <input type="checkbox"/> Restricted
4. Company/Product (Name) IR 25	PM# 10	
5. Name and Address of Applicant (Include ZIP Code) Athea Laboratories, Inc. P.O. Box 240014 Milwaukee, WI 53224 <input type="checkbox"/> Check if this is a new address	6. Expedited Review. In accordance with FIFRA Section 3(c)(3) (b)(i), my product is similar or identical in composition and labeling to: EPA Reg. No. _____ Product Name _____	

Section - II

<input type="checkbox"/> Amendment - Explain below.	<input type="checkbox"/> Final printed labels in response to Agency letter dated _____
<input type="checkbox"/> Resubmission in response to Agency letter dated _____	<input type="checkbox"/> "Me Too" Application.
<input checked="" type="checkbox"/> Notification - Explain below.	<input type="checkbox"/> Other - Explain below.

NOTIFICATION
MAY 11 2010

Explanation: Use additional page(s) if necessary. (For section I and Section II.)

Notification of minor label changes per PR Notice 2007-4. See attached cover letter

Section - III

1. Material This Product Will Be Packaged In:

Child-Resistant Packaging <input type="checkbox"/> Yes* <input checked="" type="checkbox"/> No	Unit Packaging <input checked="" type="checkbox"/> Yes <input type="checkbox"/> No	Water Soluble Packaging <input type="checkbox"/> Yes <input checked="" type="checkbox"/> No	2. Type of Container <input checked="" type="checkbox"/> Metal <input type="checkbox"/> Plastic <input type="checkbox"/> Glass <input type="checkbox"/> Paper <input type="checkbox"/> Other (Specify) _____
* Certification must be submitted		If "Yes" Unit Packaging wgt. No. per container 1,16,18,40	If "Yes" Package wgt. No. per container

3. Location of Net Contents Information <input checked="" type="checkbox"/> Label <input type="checkbox"/> Container	4. Size(s) Retail Container N/A	5. Location of Label Directions <input checked="" type="checkbox"/> On Label <input type="checkbox"/> On Labeling accompanying product
---	------------------------------------	--

6. Manner in Which Label is Affixed to Product <input checked="" type="checkbox"/> Lithograph <input type="checkbox"/> Paper glued <input type="checkbox"/> Stenciled	<input checked="" type="checkbox"/> Other Silkscreened
--	--

Section - IV

1. Contact Point (Complete items directly below for identification of individual to be contacted, if necessary, to process this application.)

Name Adam Swader	Title Regulatory Comp Spec.	Telephone No. (Include Area Code) 414-354-6417
---------------------	--------------------------------	---

Certification

I certify that the statements I have made on this form and all attachments thereto are true, accurate and complete. I acknowledge that any knowingly false or misleading statement may be punishable by fine or imprisonment of both under applicable law.

6. Date Application Received (Stamped)

2. Signature 	3. Title Regulatory Comp Spec.	6. Date Application Received (Stamped)
4. Typed Name Adam Swader	5. Date Mar 25, 2010	



March 25, 2010

Document Processing Desk (NOTIF)
Office of Pesticide Programs (7504P)
U.S. Environmental Protection Agency
1200 Pennsylvania Ave., NW
Washington, DC 20460-0001

Subject: Storage and Disposal Update
IR 25
EPA Registration No. 10088-117

To Whom It May Concern:

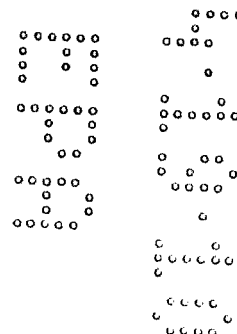
Please find the enclosed one label marked with changes and Form 8570-1 stating the following:

Notification of label change per PR Notice 2007-4. This notification is consistent with the guidance in PR Notice 2007-4 and the requirements of EPA's regulations at 40 CFR §§ 156.10, 156.140, 156.144, 156.146, and 156.156. No other changes have been made to the labeling or Confidential Statement of Formula for this product. I understand that it is a violation of 18 U.S.C. SEC. 1001 to willfully make any false statement to EPA. I further understand that if the amended label is not consistent with requirements of 40 CFR §§ 156.10, 156.140, 156.144, 156.146, and 156.156, this product may be in violation of FIFRA and I may be subject to enforcement action and penalties under sections 12 and 14 of FIFRA.

If there are any questions in regards to this notification please contact me at 414-354-6417 ext. 215 or email me at aswader@athea.com.

Thank You,

Adam Swader
Regulatory Compliance Specialist
Enclosures



IR 25

DIRECTIONS FOR USE

It is a violation of Federal law to use this product in a manner inconsistent with its labeling.

IR 25 provides up to 4 hours of protection from Mosquitoes, Black Flies, Stable Flies, and Flies, Gnats, Chiggers, Fleas, and Ticks.

Convenient, easy to use (Towel)(Towelette)(Wipe) allows quick and thorough application to skin, hair, and clothing for maximum protection.

Read and follow all directions and precautions on this product label.

Wipe and spread evenly to moisten all exposed skin. Use just enough repellent to cover exposed skin and/or clothing. Avoid over-application of this product. Frequent reapplication and saturation of clothing are unnecessary for effectiveness. When using on face, apply sparingly, avoiding eyes and mouth. Apply sparingly around ears. Do not allow children to handle this product. Do not apply to eyes and mouth. Do not apply to children's hands. When using on children, apply to your own hands and then put it on the child. Do not apply over cuts, wounds, or irritated skin. Also apply to clothing such as shirt, pants, hat, and socks. Do not use under clothing. For Chiggers and Ticks, apply to shirt and pant cuffs and socks.

After returning indoors, wash treated skin with soap and water. Wash treated clothing before wearing it again. Use of this product may cause skin reactions in rare cases. If you suspect a reaction to this product, discontinue use, wash treated skin, and call your local poison control center. If you go to a doctor, take this repellent product with you.

NOTE: Will not damage cotton, wool, or nylon. Do not apply on or near acetate rayon, Spandex or synthetics other than nylon, furniture, plastics, watch crystals, leather and painted or varnished surfaces (including automobiles).

DIRECTIONS FOR DISPENSING:

Remove lid. Pull towel from center of the roll and thread through underside of lid. Do not push finger through lid opening. Pull towel at 90° angle. Snap hinged cap back into place so towels stay moist.

STORAGE AND DISPOSAL

Do not contaminate water, food or feed by storage or disposal. **CONTAINER STORAGE/DISPOSAL:** Store in an area inaccessible to children. Dispose of wipe in trash after use. Do not flush. Tightly close lid between uses to retain moisture. Do not reuse empty container. Offer empty container for recycling. If recycling is not available, thoroughly rinse empty container before discarding in trash.

1541.0406010

Page 1 of 3

PRECAUTIONARY STATEMENTS HAZARDS TO HUMANS AND DOMESTIC ANIMALS

WARNING

Causes substantial but temporary eye injury. Harmful if swallowed. Do not get in eyes. Use of this product may cause skin reactions in rare cases. Wash treated clothing before wearing it again. Wash hands before eating, drinking, chewing gum, using tobacco or using the toilet.

FIRST AID

IF IN EYES:

- Hold eye open and rinse slowly and gently with water for 15-20 minutes.
- Remove contact lenses, if present, after the first 5 minutes, then continue rinsing eyes.
- Call a poison control center or doctor for treatment advice.

IF SWALLOWED:

- Call a poison control center or doctor immediately for treatment advice.
- Have a person sip a glass of water if able to swallow.
- Do not induce vomiting unless told to do so by a poison control center or a doctor.
- Do not give anything by mouth to an unconscious person.

Have the product container or label with you when calling a poison control center or doctor or going for treatment. For additional information on this product (including health concerns, medical emergencies or pesticide incidents), you may call 1-800-222-1222.

NOTIFICATION
MAY 11 2010

Water-Based Insect Repellent Formula

Non-VOC Formula

No Strong/Offensive Odor

Leaves No Sticky Residue

With Effective DEET Repellent

Repels Biting Insects For Up To 4 Hours/
Provides Up To 4 Hours Protection

Repels Mosquitoes, Black Flies, Ticks, and Fleas

ACTIVE INGREDIENT:

DEET	25.00%
OTHER INGREDIENTS:	75.00%
TOTAL	100.00%

KEEP OUT OF REACH OF CHILDREN WARNING

See side panel for additional precautionary statements.

EPA REG. NO. 10088-117

EPA-EST 10088-WI-2

Net Contents: (x) ounces

Contains: (X) • (X)" x (X)" ((X) cm x (X) cm)
Premoistened (Towelettes) (Towels) (Wipes)

Manufactured By:
Athea Laboratories Inc
PO Box 240014
Milwaukee, WI 53224

5/6

Optional text imprinted on label:

Date and/or company name and/or company logo, preceded of followed by:

- Golf Outing
- Golf Camp
- Day Camp
- Summer Camp
- Summer Carnival
- Summer Picnic
- Grand Opening
- Grand Opening Fair
- Best Year Ever
- Compliments of
- Keeping you protected

Optional Package Direction/Directions for Dispensing (may be bulleted, numbered or in sentence form):

Resealable package instructions (used with product supplied in resealable pouches/packages):

To Open Package: Peel back resealable label. Remove (towel)(towelette)(wipe)(cloth) from the center of the pack. Reseal package to the closed position to keep (towels)(towelettes)(wipes)(cloths) moist.

Or

Tear open envelope, remove towel; open, and wipe or rub liberally on all exposed skin areas avoiding eyes and mouth. Repeat when insects become annoying. For ticks and chiggers, also apply liberally to shoe tops, socks and around openings of clothing. Repeat using a fresh towel when necessary.

Or

Canister Directions

TO OPEN:

- Remove lid from canister.
- Lift flap in center of lid.

Manufactured By:
Athea Laboratories, Inc.
Product Name: IR 25
EPA Reg. No. 10088-117

- Pull up corner of center (towel)(towelette)(wipe), twist to a point and thread through dispenser hole in lid. DO NOT PUSH FINGER THROUGH OPENING.
- Replace lid. Pull out exposed (wipe)(towelette)(wipe) and snap off. The next (towel)(towelette)(wipe) pops up automatically. Dispose of used (towels)(towelettes)(wipes) in trash receptacle. Snap center flap down when finished to retain moisture.
- Do not flush.

Or

TO OPEN PACKAGE:

Flip open dispensing cap and remove lid by pulling upward. Thread center (towel)(towelette)(wipe) corner through slits in lid center. DO NOT PUSH FINGER THROUGH OPENING. Replace lid. Dispense (towels)(towelettes)(wipes) by pulling out at an angle. Snap flip lid down when finished, to retain moisture. Dispose of used (towels)(towelettes)(wipes) in trash. Do not flush.

Or

TO OPEN PACKAGE:

Pop open dispensing cap and remove top by lifting upward. Pull up corner of center (towel)(towelette)(wipe), twist to a point and thread through slits on top. DO NOT PUSH FINGER THROUGH SLITS. Replace top and pull (towels)(towelettes)(wipes) at a slight angle. The next (towel)(towelette)(wipe) pops up automatically. Snap tab closed to retain moisture. Do not flush.

Or

DISPENSER: To start feed. Remove large cover and discard seal from container. From center of (towel)(towelette)(wipe) roll, pull up (towel)(towelette)(wipe) corner, twist into a point and thread it through the hole in the container cover. DO NOT PUSH FINGER THROUGH HOLE. Pull through about one inch. Replace cover. Pull out first (towel)(towelette)(wipe) and snap off at a 90 degree angle. Remaining (towel)(towelette)(wipe) feed automatically ready for next use. When through using, keep small center cap closed to prevent moisture loss. Do not flush.

Or

(for refill bag)

To Open Package:

Remove lid on canister. Cut open top of plastic bag. Remove the roll from the plastic bag. Place roll in canister. Dispose

~~of plastic. Thread the (wipe) (towelette) (cloth) through the opening on the canister. Close the lid of the canister.~~

Or

Resealable Package Instructions:

TO OPEN PACKAGE: Slowly peel back label. (Pull out)(Remove) (towels)(towelettes)(wipes) as needed. To retain moisture, reseal (pouch)(package) by firmly pressing label back on (pouch)(package).

Or

(For canister)

To Open Package: Remove cover. Pull up (towel)(towelette)(wipe) corner from center of roll. Thread through hole in the cover. Replace cover. Open center cap to cover to remove wipe. When not in use (When not using), close center cap (securely) to prevent moisture loss.

Or

(For carton or tub)

To Open Package: Open cover and slowly peel back label on pouch. Remove (Pull out) (towel)(towelette)(wipe) as needed. To retain moisture, reseal (pouch)(bag) by firmly pressing seal back on the (pouch)(bag) and close (carton or tub) cover.

Or

(for the Travel Pack size)

To Open Package: Slowly peel back label. (Pull out)(Remove) (towels)(towelette)(wipes) as needed. Reseal label to retain moisture.

Or

To Open Package: Open ziplock (Tear edge of pack). (Pull out)(Remove) (towels)(towelette)(wipes) as needed. Reseal ziplock to retain moisture.

Or

(Non-resealable Packaging)

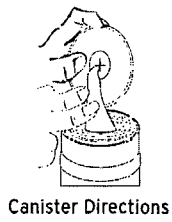
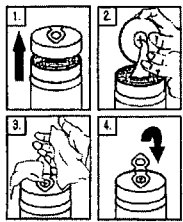
To Open Package: Tear edge of pack. (Pull out)(Remove) (towels)(towelette)(wipe).

5/09

Optional Marketing Text:

- Repels Mosquitoes that may carry/transmit the West Nile virus.
- Towels apply repellent where you need it most.
- Will not stain clothes or fabric.
- Will not stain clothing or fabric.
- Stain-free formula will not harm clothes.
- Repellent formula will not stain clothes or fabrics.
- No excess spray with towels to harm decorative plants.
- Easy-to-use towels apply repellent in one-step.
- Apply repellent in one easy step - tear off towel and wipe.
- Portable canister goes anywhere.
- Portable canister goes anywhere bugs are found.
- Portable (X)-count canister can be taken anywhere.
- Portable (X)-count canister easily fits into pockets.
- Use towels at work or at play.
- Soft, durable (X" x (X") (towelette)(towel)(wipe).
- Non-greasy insect repellent.
- Portable, resealable packaging.

Optional Graphics:

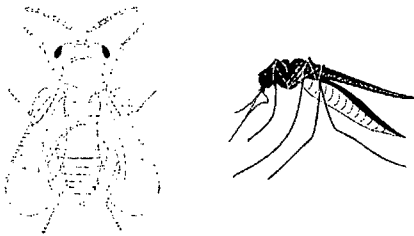
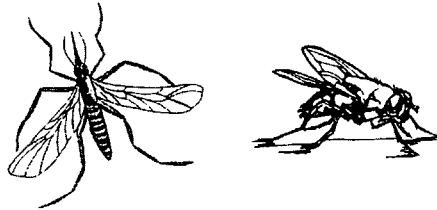
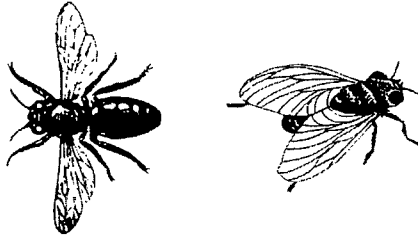
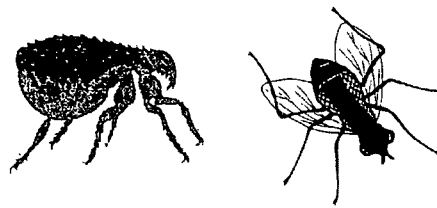


Canister Directions



Manufactured By:
 Athea Laboratories, Inc.
 Product Name: IR 25
 EPA Reg. No. 10088-117

Optional Graphics:



Optional Graphics:

