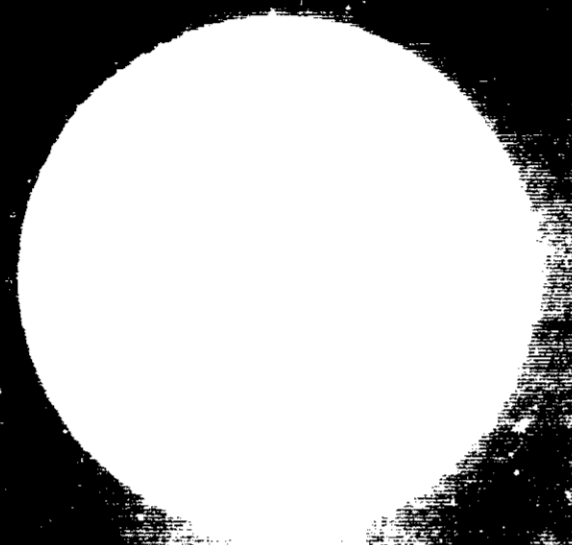


LITHO U.S.A.



BELOW
THE WATER LINE

SUPER HEAVY DUTY

ANTI-FOULING

The dry coat of KL-990 contains powerful marine growth inhibitors... Tried and proven in Florida's coastal waters.



KL-990

ONE U. S. GALLON

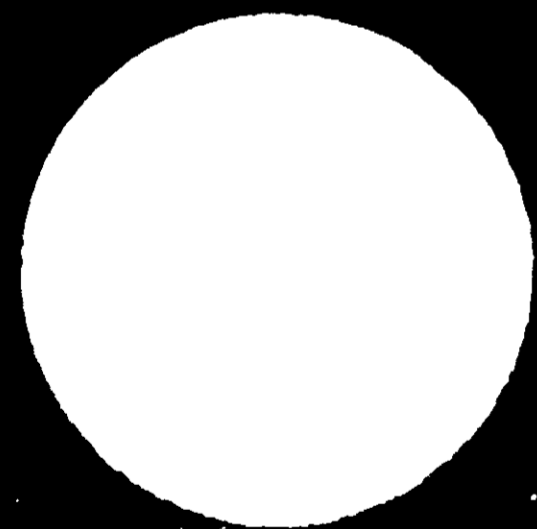
KOMPOSITION

Prevents the growth of marine life on the bottom of sea-going vessels. Formulated for tropical and other heavily infested waters.

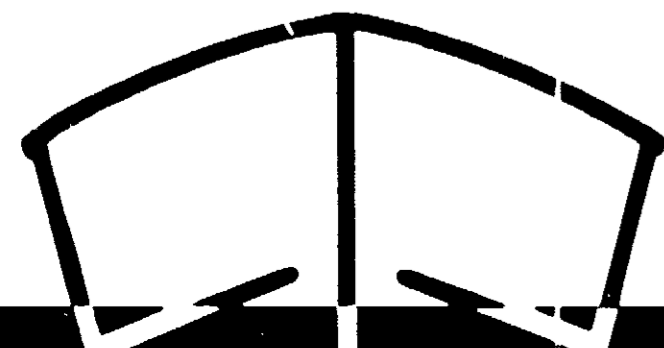
SUPER HEAVY DUTY

®

SUPER HEAVY D



**FOR
THAT
IMPORTANT
AREA**



One Gallon U.S. Standard Measure

3.79 Liters Metric Measure

.83 Imperial Gallon

DIRECTIONS

For maximum results remove old paint layers and apply two full coats, allowing sufficient time for drying between applications. A poorly brushed film will not furnish satisfactory protection. KL-990 should be flowed on with a good quality long bristle brush.

Thick, dead layers of old paint will rapidly absorb KL-990 and reduce its effectiveness. Do not thin KL-990, even for prime coat application to new wood. New fiberglass surfaces need a wet sanding before application of the first coat of KL-990. Steel, aluminum and iron surfaces must be undercoated with a high grade anti-corrosive primer. Loose paint, sea growth and dust must be removed from all surfaces to be coated.

The Komposition is easily stirred if the can is inverted and shaken briefly before opening. When ready for application, KL-990 will be uniform in color. KL-990 can be brushed on with extreme ease.

KL-990 dries to a smooth, attractive finish and does not crack, chip, check or peel. Use firm brush action to insure good surface contact, especially on new fiberglass surfaces. Brushes are cleaned easily with mineral spirit.

For best results allow to dry 6 hours between coats and allow to dry at least 6 hours before launching.

CHECK THE FACTS:

Anti-fouling properties are based upon toxicity of ingredients and the very slow disintegration of the Komposition.

The coat is smooth and firm with excellent adhesion. The slow exfoliation of the coat eliminates building up of "dead" layers, avoiding the cost of removal, and insuring a smooth bottom.

KL-990 can be brushed, rolled and sprayed, covering one-third more surface with no runs or sags.

Prolonged exposure to air does not harm the anti-fouling properties. The boat can be launched even a week after application of the final coat.

Can be applied over previously painted surfaces AND DIRECTLY TO FIBER-GLASS and EPOXY after an initial sanding to remove release coatings and waxes.



5-7-71
9956-3

FOR
THAT
IMPORTANT
AREA

HEAVY DUTY

ANTI-FOULING

The dry coat of KL-990 contains powerful marine growth inhibitors. Tried and proven in Florida's coastal waters.



KL-990®