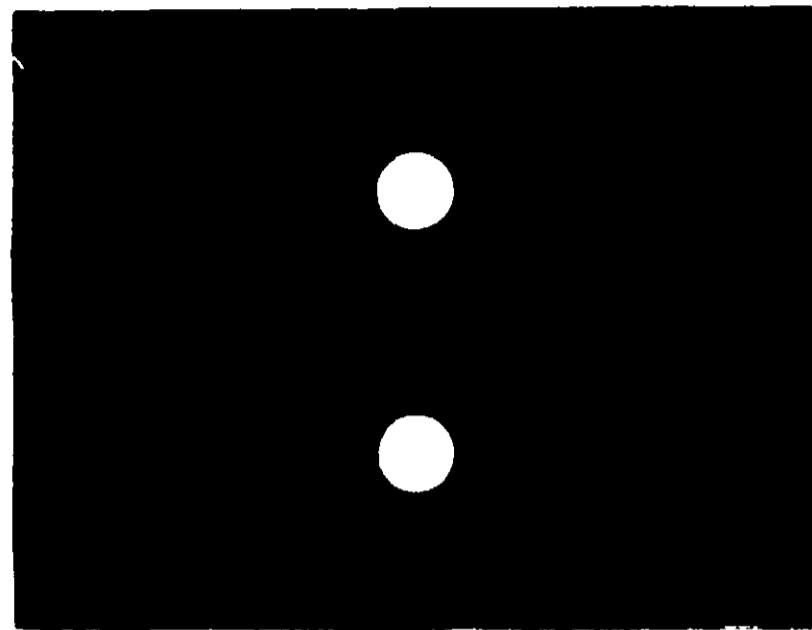


REGISTRATION NO. 10090-1

Easy to Apply



Prevents

DECAY

DRY ROT

ACTIVE INGREDIENT

Zinc Naphthenate

MOLD

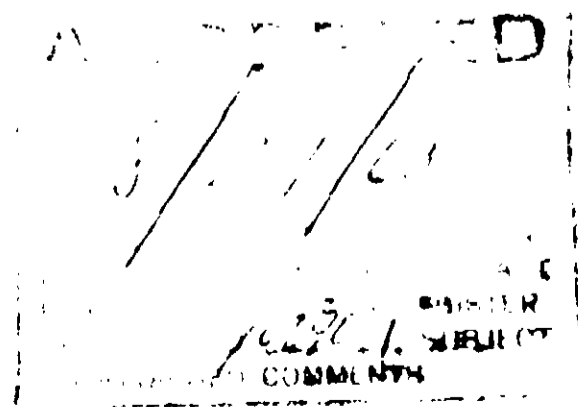
INERT INGREDIENT

Mineral Spirits 64%

Termites

ROT NOT No. 2 ONE QUART

CAUTION!
HARMFUL OR FATAL IF SWALLOWED
KEEP OUT OF THE REACH OF CHILDREN
SEE CAUTIONS ON BACK PANEL



DIRECTIONS

for using Either kind:
Number 1 or Number 2

**ROPE, Fishing Line,
AWNINGS, CANVAS**

Dip in ROT NOT for a minute or two. (If material has been "water-proofed" give it a little longer) Wring out excess. Hang up to dry.

On WOOD

Small pieces may be dipped. Leave in until they absorb all they can. For larger pieces, brush ROT NOT on, as heavily as possible. Flow it on, do not brush it out. It can also be applied by spraying.

Do not thin -- use it full strength. use precautions usual in painting. ROT NOT cannot be used over paint.

INFLAMABLE WHILE WET

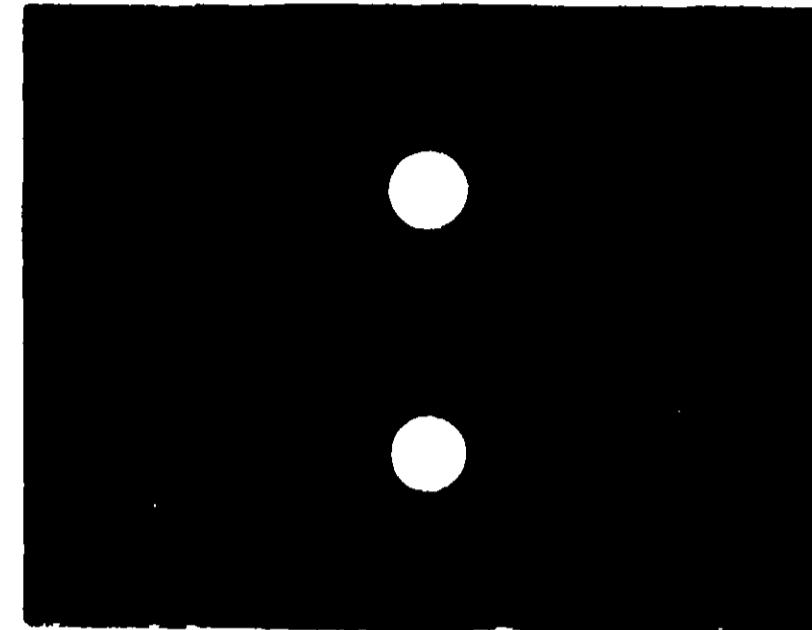
Guaranteed Metal Content. ROT NOT is the same preservative the Navy and Army used in the war.

**INDUSTRIAL PAINT
MANUFACTURING CO.**

Shelton, Ala., U. S. A.

KEEP OUT OF THE REACH OF CHILDREN.

Easy to Apply



Prevents

DECAY

DRY ROT

MOLD

Termites

ROT NOT No. 2 ONE QUART

CONTAINS PETROLEUM DISTILLATE. If Swallowed, Do Not Induce Vomiting. CALL PHYSICIAN IMMEDIATELY. **COMBUSTIBLE.** Keep away from heat and open flame. Use with adequate ventilation. Avoid prolonged contact with skin and breathing of vapor or spray mist. Do not transfer contents to bottles or other unlabeled containers. Close container after each use.



2 KINDS:

ROT NOT Number 1

GREEN. For materials that will not be painted over. It colors them light green and will "bleed" through paint unless sealed.

ROT NOT Number 2

PALE AMBER. Leaves almost no color after drying. For materials to be painted or left "natural".

you have to see for you
**This is ROT NOT
Number 2**