

AS iIL

5536 Coastal Red Anti-Fouling Paint

CAUTION! KEEP OUT OF REACH OF CHILDREN.
HARMFUL OR FATAL IF SWALLOWED. VAPOR HARMFUL.

See back panel for additional cautions. E-11

W. A. King,
1970-1974

5536 COASTAL RED ANTI-FOULING PAINT Pigment 57.2%

*Copper Pigment	40.8%
Magnesium Silicates	7.9%
Zinc Oxide	8.8%
Iron Oxide*	1.7%
* Ferric Oxide	84.0%
* Magnesium Silicates	16.0%

Vehicle 42.8%

Rosin	12.4%
Abietic Rosin Ester	.7%
Zinc Resinate	2.4%
Fish Oil	3.2%
Pine Oil	1.2%
Xylene	18.7%
Aromatic Hydrocarbon	4.3%
Aliphatic Hydrocarbons	3.0%
Butyl Alcohol	.5%
Copper Naphthenate	1.4%

100.0%

ANTI-FOULING INGREDIENTS

ACTIVE INGREDIENTS

*Cuprous Oxide	38.7%
*Metallic Copper	.8%
Copper Naphthenate	1.4%
INERT INGREDIENTS	59.1%

4-9-70 100.0%
Total Copper Calculated as Metallic 35.3%

**65% COASTAL RED
ANTI-FOULING PAINT
Pigment 57.2%**

*Copper Pigment	40.8%
Magnesium Silicates	7.9%
Zinc Oxide	6.8%
Iron Oxide**	1.7%
**Ferric Oxide	84.0%
**Magnesium Silicates	16.0%

Vehicle 42.8%

Aliphatic Hydrocarbons	8.0%
Butyl Alcohol	.5%
Copper Naphthenate	1.4%

100.0%

ANTI-FOULING INGREDIENTS

ACTIVE INGREDIENTS

*Copper Oxide	88.7%
*Metallic Copper	.8%
Copper Naphthenate	1.4%
INERT INGREDIENTS	89.1%

4-9-70 100.0%

Total Copper Calculated as Metallic 89.9%

ANTI-FOULING PAINT FOR METAL BOTTOMS: Application of two coats is recommended for best performance.

Surface Preparation: Surfaces must be dry, clean, and free of grease, oil, rust and loose paint. Steel must be coated with suitable primer, or anti-corrosive barrier coats before application of antifouling.

Mixing: Before use power mix or box the paint until the product is uniform. Stir the paint at intervals during application to maintain uniformity.

Application: Apply by brush, spray or roller.

Thinning: Thin slightly when required for application with 7070 Thinner for brush or roller work, or 7076 Thinner for spray.

Coverage: Theoretical coverage is 425 sq. ft./gal. for a 2 mil dry film. Actual coverage may be less depending upon application techniques, climatic conditions, and type of surface.

Dry Time: At 70° F. and 50% R.H., allow at least 2 hour dry time between coats, and a minimum of 4 hours before refloating. ML-183 5-71

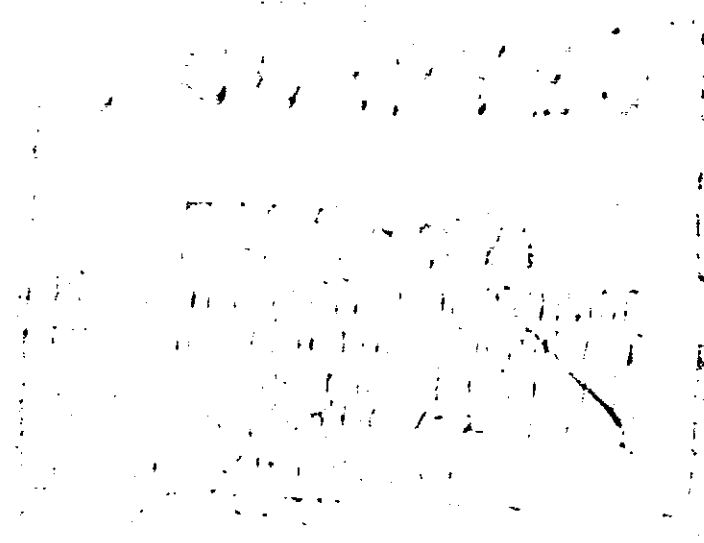
**CAUTION! COMBUSTIBLE.
CONTAINS COPPER AND XYLOL.
HARMFUL IF SWALLOWED. VAPOR HARMFUL.**

Keep away from heat, sparks and open flame. Do not apply on any interior surfaces of a dwelling or a place used for the care of children or on window sills, toys, cribs or other furniture which may be used by children. Avoid breathing of vapors or spray mist or repeated contact with skin. Wash thoroughly after handling and before eating or smoking. Keep container closed when not in use. (CCD-137A)

**USE WITH ADEQUATE VENTILATION.
KEEP OUT OF THE REACH OF CHILDREN.**

XI-631

Mobil®



U. S. D. A.
REGISTRATION
#3607-2

ACCEPTED

APR 16 1971

UNDER THE FEDERAL FUNGICIDE AND RODENTICIDE ACT FOR ECONOMIC POISON REGISTERED UNDER NO. 9755-16

Sheep...
Not...
Copper...

CAUTION! KEEP OUT OF REACH OF CHILDREN.
HARMFUL OR FATAL IF SWALLOWED.
VAPOR HARMFUL.

See back panel for additional cautions (FS-1)

COPPER AN
Element 47
Copper Pic
Zinc Oxide
Seric Oxide
Magnesium
Silica
Volatile 52
Resin
Cooling
Metallic
3-25-66