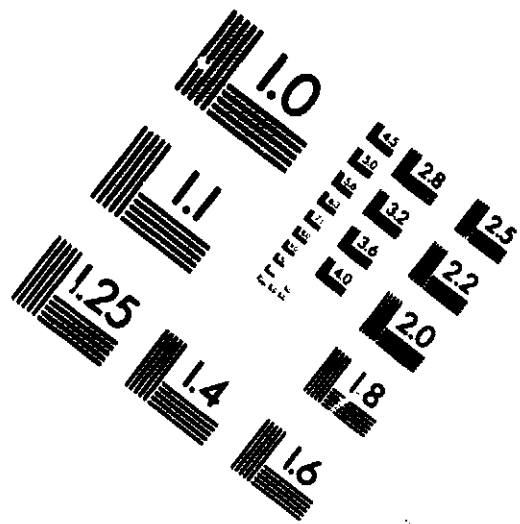
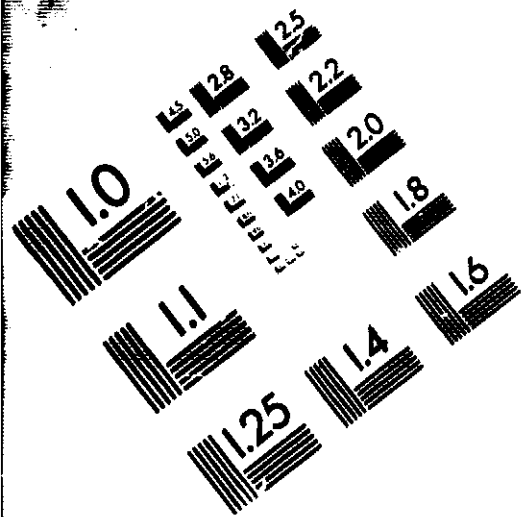




**AIM**

**Association for Information and Image Management**

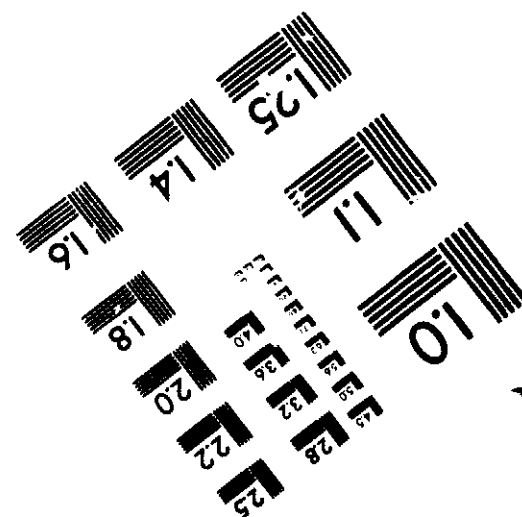
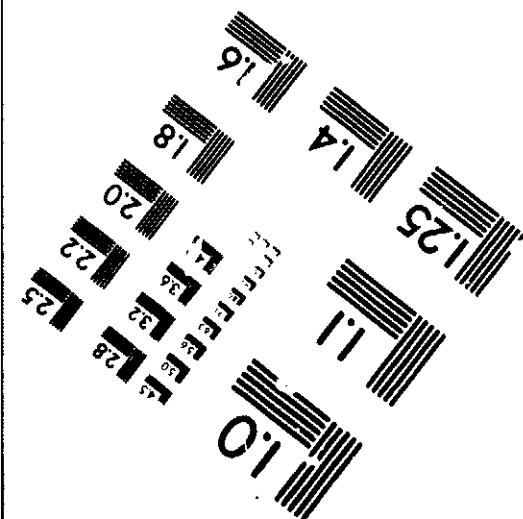
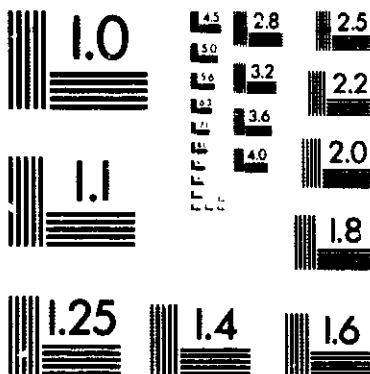
1100 W. ... Avenue, Suite 1100  
Silver Spring, Maryland 20910  
301/587-8202



**Centimeter**



**Inches**



MANUFACTURED TO AIM STANDARDS  
BY APPLIED IMAGE, INC.



**EPA**

**COMPANY  
NUMBER**

**51036**

**PRODUCT  
SERIAL NO.**

**179**

**LABEL  
APPROVAL  
DATE**

**10-17-91**

Reg # 51036-179

PM-19

1 of 11

US ENVIRONMENTAL PROTECTION AGENCY OFFICE OF PESTICIDES PROGRAMS REGISTRATION DIVISION (75-767) WASHINGTON, DC 20460	EPA REGISTRATION NO.	DATE OF ISSUANCE
	51036-179	October 17, 1991
<b>NOTICE OF PESTICIDE:</b> <input checked="" type="checkbox"/> REGISTRATION <input type="checkbox"/> REREGISTRATION (Under the Federal Insecticide, Fungicide, and Rodenticide Act, as amended)	TERM OF ISSUANCE	
	Until Reregistration	
	NAME OF PESTICIDE PRODUCT	
	Ethyl-Methyl Parathion 6-3 EC	
NAME AND ADDRESS OF REGISTRANT (Include ZIP code)		
Micro Flo Company P.O. Box 5948 Lakeland, Florida 33807		
<b>NOTE:</b> Changes in labeling formula differing in substance from that accepted in connection with this registration must be submitted to and accepted by the Registration Division prior to use of the label in commerce. In any correspondence on this product always refer to the above U.S. EPA registration number.		
On the basis of information furnished by the registrant, the above named pesticide is hereby Registered/Reregistered under the Federal Insecticide, Fungicide, and Rodenticide Act.		
A copy of the labeling accepted in connection with this Registration/Reregistration is returned herewith.		
Registration is in no way to be construed as an indorsement or approval of this product by this Agency. In order to protect health and the environment, the Administrator, on his motion, may at any time suspend or cancel the registration of a pesticide in accordance with the Act. The acceptance of any name in connection with the registration of a product under this Act is not to be construed as giving the registrant a right to exclusive use of the name or to its use if it has been covered by others.		
This product is conditionally registered in accordance with FIFRA sec. 3(c)(7)(A) provided that you:		
1. Submit and/or create all data or other material required for registration/reregistration of your product under FIFRA sec. 3(c)(5) or FIFRA sec. 4 when the Agency requires all registrants of similar products to submit such data.		
2. Make the following label changes:		
a. Add the phrase, "EPA Registration No. 51036-179."		
b. Revise the Restricted Use Statement to read as follows:		
For retail sale only to certified commercial aerial applicators or persons under their direct supervision. For use only by certified commercial aerial applicators. Direct supervision for this product is defined as the certified commercial aerial applicator being physically present during mixing, loading, repair and cleaning of application equipment. Certified commercial aerial applicators must also ensure that all persons involved in these activities are informed		
<input checked="" type="checkbox"/> ATTACHMENT IS APPLICABLE to the precautionary statements.		
SIGNATURE OF APPROVING OFFICIAL		DATE
Dennis H. Edwards		10/17/91

- c. Delete the statements, "Not For Home Use" and "First Aid Treatment" from the front panel of your product labeling.
- d. The statement, "See additional precautionary statements elsewhere on label" must be more specific. Please refer the user to a specific place on label where additional precautionary statements may be found.
- e. Please remove the reference to Dust from page two of your product labeling.
- f. Please revise the Environmental Hazards section to read as follows:

This pesticide is highly toxic to fish and wildlife. Birds in treated areas may be killed. Do not apply directly to water or wetlands (swamps, marshes, bogs, and potholes). Run-off and drift from target areas may be hazardous to aquatic organisms in adjacent aquatic sites. Do not contaminate water when disposing of equipment washwaters.

Then proceed with the Bee Precautionary statement.

- g. Please add the following statement to the "Work Safety Rules" section.

During Aerial Application, Human Flaggers are Strictly Prohibited.

- h. On page four of your product labeling, please add the following statements to the end of the paragraph which begins as, "Remove the product..."

Examples of California-listed systems are the Chemprobe® Model II system sold by Cherlor Mfg. Co., Inc., P.O. Box 2174, Salinas, CA 93902, telephone 408-422-5477 or the Protect-O-Loader Model XM-1 system sold by Protecto Mfg. Co. 20189 Firerock Road, Bend, OR 97701, telephone 503-382-6886.

- i. On page five of your product labeling, please delete the heading, "Specifications For Closed Loading System," and all of the statements under that heading.
- j. In the reentry statement, at the top of page eight (8), please correct the spelling of "treated."
- k. Alfalfa- please replace the word, "legumes" with "Alfalfa."

Please delete the statement, "Birds...may be

- 1. Cotton- in the worker reentry statement, please replace the word, "should" with the word "must."

If these conditions are not complied with, the registration will be subject to cancellation in accordance with FIFRA sec. 6(e). Your release for shipment of the product constitutes acceptance of these conditions.

A stamped copy of the label is enclosed for your records.

Dennis H. Edwards, Jr.

DHE

Product Manager 19  
 Insecticide-Rodenticide Branch  
 Registration Division (H7505C)

enclosure

4711

**RESTRICTED USE PESTICIDE**

**Due to very high acute toxicity to Humans and Birds**

For retail sale to and use only by certified applicator or persons under their direct supervision and only for those uses covered by the certified applicator's certification. Direct supervision for this product is defined as the certified applicator being physically present during application, mixing, loading, repair and cleaning of application equipment. Commercial certified applicators must also ensure that all persons involved in these activities are informed of the precautionary statements.

**MICRO FLO  
ETHYL METHYL PARATHION 6-3 EC**

**ACTIVE INGREDIENTS:**

*0,0-diethyl 0-p-nitrophenyl phosphorothioate .....	55.27%
*Related Compounds .....	2.85%
**0,0-dimethyl-0-p-nitrophenyl phosphorothioate .....	27.60%
**Related Compounds .....	1.45%
<b>INERT INGREDIENTS .....</b>	<b>12.83%</b>
<b>TOTAL .....</b>	<b>100.00%</b>

ACCEPTED  
with COMMENTS  
EPA Letter Dated:

OCT 17 1991

Under the Federal Insecticide, Fungicide, and Rodenticide Act as amended, for the pesticide registered under EPA Reg. No.

51036-179

\*Equivalent to 6.0 lbs. parathion & related compounds per gallon

\*\*Equivalent to 3.0 lbs. methyl parathion & related compounds per gallon

**KEEP OUT OF REACH OF CHILDREN**

~~☞~~ POISON ~~☞~~  
**DANGER PELIGRO**

**PRECAUCION AL USUARIO:** Si usted no lee ingles, no use este producto hasta que la etiqueta haya sido explicada ampliamente.

**NOT FOR HOME USE**

**FIRST AID TREATMENT**

**STATEMENT OF PRACTICAL TREATMENT**

Call a doctor (physician), clinic or hospital immediately. Explain that the victim has been exposed to parathion and describe his condition. If doctor cannot come, take victim to clinic or hospital. Move victim immediately from the area where parathion is present.

**IF INHALED:** Remove victim to fresh air. If not breathing, immediately give artificial respiration, preferably mouth-to-mouth, and maintain until doctor sees victim. If breathing is difficult, give oxygen.

**IF IN EYES OR ON SKIN:** immediately flush with plenty of water while removing contaminated personal clothing and shoes to avoid continued possible exposure to victim or persons in attendance.

**IF SWALLOWED:** Induce vomiting immediately by giving two glasses of water and by touching back of throat with finger. **DO NOT INDUCE VOMITING OR GIVE ANYTHING BY MOUTH TO AN UNCONSCIOUS PERSON.** Have victim lie down and keep quiet.

5 of 11

SEE ADDITIONAL PRECAUTIONARY STATEMENTS ELSEWHERE ON LABEL

EPA Reg. No. 51036-RTO

EPA Est. No. 51036-GA-1

Manufactured By  
MICRO FLO COMPANY  
P.O. BOX 5948, LAKELAND, FLORIDA 33807

**PRECAUTIONARY STATEMENTS**  
**Hazards To Humans and Domestic Animals**  
**DANGER**

**POISONOUS IF SWALLOWED, INHALED OR ABSORBED THROUGH SKIN. RAPIDLY ABSORBED THROUGH SKIN. REPEATED EXPOSURE MAY, WITHOUT SYMPTOMS, BE INCREASINGLY HAZARDOUS. Do not breathe vapors or dust. Do not get in eyes, on skin or on clothing.**

**POISON SIGNS (Symptoms)**

Parathion is a very dangerous poison. It rapidly enters the body on contact with all skin surfaces and eyes. Clothing wet with this material must be removed immediately. Exposed persons must receive prompt medical treatment or they may die.

Some of the signs and symptoms of poisoning are: Headaches, nausea, vomiting, cramps, weakness, blurred vision, pin-point pupils, tightness in chest, labored breathing, nervousness, sweating, watering of eyes, drooling or frothing of mouth and nose, muscle spasms and coma.

**NOTE TO PHYSICIAN**

Antidote - administer atropine sulfate in large doses, TWO to FOUR mg. intravenously or intramuscularly as soon as cyanosis is overcome. Repeat at 5 to 10 minute intervals until signs of atropinization appear. 2-PAM chloride is a pharmacologic antidote and may be administered as an adjunct to, but not a substitute for, atropine which is a symptomatic and often life saving antidote. DO NOT GIVE MORPHINE OR TRANQUILIZERS BECAUSE THESE ANTIDOTES MAY PRODUCE ADVERSE EFFECT ACCENTUATING THE PHARMACOLOGIC EFFECT OF THIS PRODUCT.

This product is a strong cholinesterase inhibitor affecting the central and peripheral nervous systems and producing cardiac and respiratory depression. At first sign of pulmonary edema, the patient should be given supplemental oxygen and treated symptomatically. Continued absorption of the poison may occur and fatal relapses have been reported after initial improvements; VERY CLOSE SUPERVISION OF THE PATIENT IS INDICATED FOR AT LEAST 48 HOURS.

**ENVIRONMENTAL HAZARDS**

This pesticide is highly toxic to fish, aquatic invertebrates, and wildlife. Birds in treated areas may be killed. Shrimp and other aquatic organisms may be killed at recommended application rates. Do not apply directly to water, to areas where surface water is present, or to intertidal areas below the mean high water mark. Runoff and drift from target areas may be hazardous to aquatic organisms in adjacent aquatic sites. Do not contaminate water when disposing of equipment washwaters. This product is extremely toxic to bees exposed to direct treatment

6911

or residues on blooming crops or weeds. Do not apply this product or allow it to drift to blooming crops or weeds if bees are visiting the treatment area.

**PHYSICAL OR CHEMICAL HAZARDS: DO NOT USE NEAR HEAT OR OPEN FLAME.**

In Case of: FIRE - Use water spray, foam, dry chemical or CO2.

SPILL or LEAK, keep all unprotected persons away. Cover with absorbent such as ash, lime, clay or saw dust. Sweep up and bury. Wash area thoroughly with strong eye solution.

**WORK SAFETY RULES**

REPEATED EXPOSURES TO CHOLINESTERASE INHIBITORS SUCH AS ARE CONTAINED IN THIS PRODUCT MAY, WITHOUT WARNING, CAUSE PROLONGED SUSCEPTIBILITY TO VERY SMALL DOSES OF ANY CHOLINESTERASE INHIBITOR. Persons working with this product should have frequent blood tests of their cholinesterase levels. If the cholinesterase level falls below a critical point, no further exposure should be allowed until it has been determined by means of blood tests that the cholinesterase level has returned to normal. Before using this product, consult the Agricultural Extension Service or Experimental Station for specific recommendations regarding such blood tests.

If handled indoors, provide mechanical exhaust ventilation.

Keep all unprotected persons and animals away from treated area or where there is danger of drift.

Do not rub eyes or mouth with hands. If you feel sick in any way, STOP work and get help right away. See First Aid (Practical Treatment) section.

**DIRECTIONS FOR USE**

It is a violation of Federal law to use this product in a manner inconsistent with its labeling.

**CHEMIGATION PROHIBITION**

Do not apply this product through any type of irrigation system.

**PROTECTION OF APPLICATORS, MIXER-LOADERS AND MAINTENANCE PERSONNEL**

**APPLICATOR PROTECTION:** The cockpit of the aircraft used to apply this product must be fully enclosed while the product is being applied. No pilot may apply this product if the pilot has earlier during the day of application performed any mixing/loading activities (other than acting as an observer) involving any pesticide product containing parathion.

**MIXER-LOADER PROTECTION:**

An observer must be present during all mixing/loading activities in order to furnish assistance in the event of an accident. The observer may not act as a mixer-loader.

**MAINTENANCE PERSONNEL PROTECTION:**

The following protective clothing and equipment must be worn during repair, cleaning of application equipment, and disposal of pesticide: waterproof-suit of one or two pieces covering all parts of the body except the head, hands, and feet; heavy-duty chemical resistant gloves; chemical resistant shoes (or chemical resistant shoe coverings or chemical resistant boots); goggles or face shield; hood or wide-brimmed hat; NIOSH approved respirator.

Any person involved in mixing/loading activities (other than the observer) must wear (1) a cotton or other fabric coverall worn over a long-sleeved shirt and long



pants, (2) chemical resistant boots and gloves, and (3) when the mixing/loading system is pressurized, a chemically resistant apron and a face shield or goggles. Effective as of January 1, 1992, this product must be mixed and loaded in a closed system, as described below:

The liquid product must be removed from its original shipping container and transferred through connecting hoses, pipes, and/or couplings that are sufficiently tight to prevent handlers or other persons from contacting the parathion concentrate, use dilution, or rinsate solution.

All hoses, piping, tanks, and connections used in the system shall be of a type appropriate for the product being used and the pressure and vacuum levels involved. The system shall be designed and operated so that the concentrated form of this product is not under more than 25 psi of pressure at any point in the system beyond or downstream from a pump producing positive pressure. The closed system must be adequate to make necessary measurements of the product being used. External sight gauges shall be equipped with valves so that the flow of pesticide to the sight gauge can be shut off in case of breakage or leakage from the gauge.

Dry-break couplings shall be used for all hose connections that may be disconnected during normal mixing-loading operations (excluding periodic maintenance). A coupling shall be considered to be a dry-break coupling only if its manufacturer certifies that less than 2 milliliters of liquid will escape per disconnect.

In mixing-loading operations do not pour this product from its container. Before opening the container, make sure that the container is resting securely on the ground or a sturdy support, with the top (opening) end up and approximately level.

Remove the product from the container only by use of a vacuum-producing pump system connected to a probe system that is listed by the State of California under that State's program establishing criteria for closed-system handling of Toxicity Category I pesticides.

The probe system shall be screwed into the threaded opening in the top of the container to form a watertight connection, using appropriate adaptors provided by the probe manufacturer as necessary. The instructions provided by the seller of the probe system shall be followed, except that a removable probe may not be removed from the container until the container is empty and the container and probe have been thoroughly rinsed as required by this section.

The closed system must provide for adequate rinsing of any removable probe and of all containers that are not labeled for return to the registrant. Rinsing must be done using a liquid that contains no pesticide. The rinsing system must be capable of spray-rinsing the inner surface of the container. The rinse solution shall be removed from the pesticide container concurrent with the introduction of the rinse medium. The rinse solution shall go into the pesticide mix tank or applicator vehicle via the closed system.

The system shall be rinsed according to the specifications of the manufacturer of the probe system, or, in the absence of such specifications, by moving at least one half the container volume through the system. A minimum pressure of 15 psi shall

be used for the spray rinse. Measures shall be taken to prevent the spray rinse procedure from causing an increase in pressure on the inside of the container walls of more than 5 psi.

Either the operator of the closed system must have available at the time of operation a complete set of written instructions for proper operation of the system, or the certified applicator must document in writing before an operator uses the closed system that the operator has been adequately trained in the proper operation of the system.

**SPECIFICATIONS FOR CLOSED LOADING SYSTEM**

1. The liquid pesticide must be removed from its original shipping container and transferred through connecting hoses, pipes, and/or couplings that are sufficiently tight to prevent handlers or other persons from contacting the parathion concentrate, use dilution, or rinseate solution. A complete seal by dry break or screw-on coupling to the opening of the original container shall be required.
2. All hoses, piping, tanks, and connections used in conjunction with the closed parathion system shall be of a type appropriate for the formulation of parathion being used and the pressure and vacuum to be encountered.
3. External sight gauges shall be equipped with valves so that the pipes to the sight gauge can be shut off in case of breakage or leakage.
4. The closed system must be adequate to make necessary measurements of the pesticide being used.
5. The movement of parathion concentrate, beyond a pump by positive pressure, shall not exceed 25 psi of pressure.
6. A probe shall not be removed from the container before the container is emptied and the inside of the container and probe have been rinsed in accordance with Specification 8.
7. Shut-off devices must be installed on the exit end of all hoses and at all disconnect points to prevent leakage of parathion when the transfer is stopped and the hose is removed or disconnected.

... If a hose carried parathion concentrate and has not been rinsed in accordance with Specification 8, a dry-couple shutoff device that will minimize parathion drippage to not more than 2 ml. per disconnect must be installed at the disconnect point.

... If the hose carried diluted-for-use parathion or rinseate solution, a reversing action pump or a similar system that will empty the hose and eliminate dripping of liquid from the end of the hose may be used as an alternative to a shut-off device.

8. The closed system must provide for adequate rinsing of any containers that are not labeled for return to the registrant. Rinsing shall be done with a liquid that contains no pesticide.

(a) The rinsing system must be capable of spray-rinsing the inner surfaces of the container, and the rinse solution shall go into the pesticide mix tank or applicator vehicle via the closed system. The system shall be rinsed according to manufacturer's specifications or, in the absence of such specifications, through moving a volume of rinseate equal to at least one half the container volume through the system.

(b) A minimum of 15 psi of pressure shall be used for rinsing.

(c) The rinse solution shall be removed from the pesticide container concurrent with the introduction of the rinse medium.

(d) Parathion containers shall be protected against excessive pressure during the container rinse operation. The maximum pressure on the interior container walls must not be increased by more than exceed 5 psi.

9. The operator of the closed system must either have available to him at the time of operation a complete set of written instructions for proper operation of the system, or the certified applicator must document in writing before an operator uses the closed system that the operator has been adequately trained in the proper operation of the system.

**INCIDENT REPORTING**

A telephone notification must be made if mixing, loading, or use of a product containing parathion results in (1) inadvertent or unexpected human exposure to the product or illness resulting from exposure to the product, (2) spill of the product, (3) an investigation by Federal, State, or local authorities of allegations involving drift of the product, or (4) the deaths of birds or other wildlife. The certified applicator or the owner of the treated land must notify by telephone the Chief, Compliance Branch, Office of Compliance Monitoring, USEPA, at (202) 260-3375 within seven days of becoming aware of the incident.

**RE-ENTRY STATEMENT**

**GENERAL REENTRY LIMITATION:** While an area is being treated with this product and during the first three days after treatment (six days after treatment if the crop treated is corn), or any longer period of time prescribed by State law or regulation, no person may enter or remain in the treated area or within 100 feet of the treated area.

**EXCEPTION:** After four 4 hours have passed since the end of the application a person may enter an area under reentry restrictions to perform scouting or irrigation-related work in accordance with the following requirements:

(a) No person shall remain in any area under reentry restrictions for a total of more than 1 hour in any 24-hour period.

(b) Before entering the treated area the person must have read the product labeling or have been informed, in a language that the person can understand, of all the requirements of the product's labeling related to human hazards or precautions, first aid, symptoms of poisoning, personal protective equipment specified for early entry, and any other labeling requirements related to safe use.

(c) The person must wear personal protective equipment consisting of a cotton or other fabric coverall worn over a long sleeved shirt and long pants, chemical resistant boots, and chemical resistant gloves, and shall take appropriate measures to prevent heat-related illness.

(d) The person must carry an eye-flush dispenser containing at least one pint of water.

(e) A reasonably accessible decontamination site must be available with adequate supplies of potable water for washing, soap, and single-use towels. After restricted-reentry activity, the person must be provided soap, clean towels, and a sufficient amount of potable water for washing and must wash thoroughly after removing personal protective equipment.

(f) All personal protective equipment worn during restricted reentry must be laundered separately and may not be worn home.

**POSTING OF TREATED AREAS:** Treated areas shall be posted with signs at all usual points of entry or in the corners of the treated areas affording maximum visibility. Written warnings must include the following information: **DANGER:** Area treated with Parathion on (date). Do not enter. Consult your State Agricultural Extension Service or Experiment Station regarding posting treated areas.

**STORAGE AND DISPOSAL**

Do not contaminate water, food, or feed by storage or disposal.

**STORAGE AND HANDLING:**

1. Handle container carefully so as to avoid damage and prevent spills.
2. Do not use or store in or around the home.
3. Store container in a well ventilated place.
4. Empty container retains vapor and product residue. Observe all labeled safeguards until container is cleaned, reconditioned or destroyed.
5. Keep out of reach of children and domestic animals.

**PESTICIDE DISPOSAL**

Wastes of this pesticide are acutely hazardous. Improper disposal of excess pesticide, spray mixtures, or rinsate is a violation of Federal law. If these wastes cannot be disposed of according to label use instructions, contact your state pesticide or Environmental Control Agency, or the Hazardous Waste Representative at the nearest EPA Regional Office for guidance.

**CONTAINER DISPOSAL**

Triple rinse (or equivalent). Then offer for recycling or reconditioning or puncture to prevent other use and dispose of in an approved landfill, or by other procedures approved by state and local authorities.

**DIRECTIONS FOR USE**

**THIS PRODUCT MAY NOT BE APPLIED TO ANY CROP OTHER THAN ALFALFA, BARLEY, CORN, COTTON, SORGHUM, SOYBEANS, SUNFLOWER, AND WHEAT. ANY TREATED CROP MAY BE HARVESTED ONLY BY MECHANICAL MEANS; HAND HARVESTING OF A TREATED CROP IS PROHIBITED.**

**LIMITS ON APPLICATION**

**AERIAL APPLICATION ONLY:** This product may only be applied aerially, and only by a certified commercial applicator as defined in FIFRA 2(e)(3).

**AREAS WHERE APPLICATION IS PROHIBITED:** This product may not be applied within 100 feet of buildings, public roads, or bodies of water. Parathion may not be applied within 100 feet of property lines unless the owner of the adjacent property has given prior written consent to the application and has been informed of the timing of the application and the appropriate reentry requirements.

**DRIFT REDUCTION MEASURES:** Do not apply this product if the wind exceeds 10 miles per hour. Apply only from nozzles located not more than 75% of the distance from the center of the aircraft to the wing tip or helicopter rotor tip.

**NOTIFICATION TO LAND OWNER:** A certified commercial applicator shall not apply this product to a person's property unless the applicator has notified the person in

writing no more than 12 months before the date of the application of: the requirement that crops treated with parathion be harvested mechanically; the appropriate reentry interval and the requirements concerning reentry set forth on this label; and the incident reporting requirements set forth on this label.

**ALFALFA:** Aphids (green bug), alfalfa weevil, alfalfa caterpillars, armyworms (up to 3rd instar), climbing cutworms, grasshoppers - use 1/4 to 1/2 pint. Blister beetle, leafhoppers, spider mites, spotted alfalfa aphid, flea beetle, alfalfa weevil larvae - use 1/3 to 2/3 pint. Tortricid moth - use 2/3 pint. **NOTE:** Do not spray legumes during bloom to avoid injury to bees. Birds and other wildlife in treated areas may be killed. Do not apply if the crop or weeds in the treatment area are in bloom. Do not apply within 15 days of harvest, cutting, or forage.

**BARLEY AND WHEAT:** Fall armyworms, winter grain mites - use 1/4 pint. Aphids (green bug), armyworms (up to 3rd instar), black grass bug (Irbisia), blister beetles, brown wheat mite (Petrobia), grasshoppers, leafhoppers, stink bugs - use 1/2 to 2/3 pint. Do not apply within 15 days of harvest.

**CORN:** Aphids, budworms, European corn borer (make 1 or more applications when borer damage threatens depending on the extent of infestation and degree of control desired. Consult your State Agricultural Experiment Station for proper timing of treatments), spider mites - use 1/2 pint. Armyworms (up to 3rd instar), fall armyworms, rootworm adults - use 1/4 pint. Do not apply within 12 days of harvest or cutting for forage. Do not apply to corn during the pollen shed period.

**COTTON:** Boll weevil, overwintered boll weevil, salt marsh caterpillar - use 2/3 to 1 1/3 pint. Aphids, armyworms (up to 3rd instar), cabbage looper, stink bug - use 1 pint. Brown cotton leafworm, cotton leafworm, cotton fleahopper, garden webworm, leafhoppers, leaf rollers, lygus bugs, red spider mites, serpentine leaf miner, thrips - use 1/2 pint. Bollworm, tobacco budworm - use 1 3/5 pint. Do not apply within 7 days of handpicking or harvest. Workers entering fields within 3 days of application should wear protective clothing.

**SORGHUM:** Corn earworms, corn leaf aphids, false chinch bugs, sorghum webworms - use 1/3 pint. Sorghum midge - use 1/2 pint. Do not apply within 21 days of harvest. May cause injury to some varieties of sorghum.

**SOYBEANS:** Aphids, armyworms (up to 3rd instar), blister beetles, climbing cutworms, fall armyworms, flea beetles, grasshoppers, leafhoppers, leaf-miners, mites - use 1/3 pint. Alfalfa loopers, lygus bugs, stink bugs - use 1/2 pint. Do not apply within 20 days of harvest. Do not apply within 60 days of harvest if tops are to be fed to livestock.

**SUNFLOWERS:** Sunflower seed weevil, Sunflower moth, Sunflower maggot, Sunflower stem weevil, Grasshopper - 7/8 pint per acre in sufficient water for thorough coverage. Do not apply more than 3 times at 5 day intervals per season. Do not feed seed to birds. Do not apply within 30 days of harvesting, pasturing, cutting or foraging.

**CONDITIONS OF SALE**

All statements concerning the use of this product apply only when used as directed. THE MANUFACTURER MAKES NO WARRANTIES, EXPRESSED OR IMPLIED, CONCERNING THIS PRODUCT OR ITS USE, WHICH EXTEND BEYOND THE DESCRIPTION ON THE LABEL. Read all directions carefully.

US ENVIRONMENTAL PROTECTION AGENCY  
OFFICE OF PESTICIDES PROGRAMS  
REGISTRATION DIVISION (75-767)  
WASHINGTON, DC 20460

EPA REGISTRATION NO.

DATE OF ISSUANCE

9779-323

October 17, 1991

TERM OF ISSUANCE

Until Reregistration

NAME OF PESTICIDE PRODUCT

Dithon 63

NOTICE OF PESTICIDE:  REGISTRATION  
 REREGISTRATION

(Under the Federal Insecticide, Fungicide,  
and Rodenticide Act, as amended)

NAME AND ADDRESS OF REGISTRANT (Include ZIP code)

Riverside/Terra Corporation  
P.O. Box 171376  
Memphis, Tennessee 38187

NOTE: Changes in labeling formula differing in substance from that accepted in connection with this registration must be submitted to and accepted by the Registration Division prior to use of the label in commerce. In any correspondence on this product always refer to the above U.S. EPA registration number.

On the basis of information furnished by the registrant, the above named pesticide is hereby Registered/Reregistered under the Federal Insecticide, Fungicide, and Rodenticide Act.

A copy of the labeling accepted in connection with this Registration/Reregistration is returned herewith.

Registration is in no way to be construed as an indorsement or approval of this product by this Agency. In order to protect health and the environment, the Administrator, on his motion, may at any time suspend or cancel the registration of a pesticide in accordance with the Act. The acceptance of any name in connection with the registration of a product under this Act is not to be construed as giving the registrant a right to exclusive use of the name or to its use if it has been covered by others.

This product is conditionally registered in accordance with FIFRA sec. 3(c)(7)(A) provided that you:

1. Submit and/or cite all data or other material required for registration/reregistration of your product under FIFRA sec. 3(c)(5) or FIFRA sec. 4 when the Agency requires all registrants of similar products to submit such data.

2. Make the following label changes:

- a. Add the phrase, "EPA Registration No. 9779-323."
- b. Revise the Restricted Use Statement to read as follows:

For retail sale only to certified commercial aerial applicators or persons under their direct supervision. For use only by certified commercial aerial applicators. Direct supervision for this product is defined as the certified commercial aerial applicator being physically present during mixing, loading, repair and cleaning of application equipment. Certified commercial aerial applicators must also ensure that all persons involved in these activities are informed

ATTACHMENT IS APPLICABLE to the precautionary statements.

SIGNATURE OF APPROVING OFFICIAL

Dennis H. Edwards

DATE

10/17/91

- c. Delete all references to canola, and its associated Directions for Use. Until the required residue data are submitted, this is a pending use.
- d. In the Statement of Practical Treatment, delete the phrase "...for at least 15 minutes" from the instructions for "In Case of Contact."
- e. Please revise the Environmental Hazards section to read as follows:

This pesticide is highly toxic to fish and wildlife. fish and other aquatic organisms in treated areas may be killed. Do not apply directly to water or wetlands (swamps, marshes, bogs, and potholes). Run-off and drift from target areas may be hazardous to aquatic organisms in adjacent aquatic sites. Do not contaminate water when disposing of equipment washwaters.

Then proceed with the Bee Precautionary statement.

- f. Under soybeans, delete the directions listed for control of white grubs and wireworms (broadcast spray...incorporate into upper 4 to 6 inches of soil).
- g. Please submit a revised Confidential Statement of Formula incorporating the changes listed below (upper and lower certified limits of all three ingredients using the nominal calculation method) within three months of the date of this registration notice.

1. Methyl Parathion, if N= 36.38, the calculations are as follows:

Column 14A =  $N + 3\% (N) = 36.38 + 1.09 = 37.47$

Column 14B =  $N - 3\% (N) = 36.38 - 1.09 = 35.29$

2. Parathion, if N= 59.25, the calculations are as follows:

Column 14A =  $N + 3\% (N) = 59.25 + 1.78 = 61.03$

Column 14B =  $N - 3\% (N) = 59.25 - 1.78 = 57.47$

3. Armul 88, if N= 4.37, the calculations are as follows:

Column 14A =  $N + 5\% (N) = 4.37 + .22 = 4.59$

Column 14B =  $N - 5\% (N) = 4.37 - .22 = 4.15$

Please refer to 40 CFR section 158.170 for further

reference.

If these conditions are not complied with, the registration will be subject to cancellation in accordance with FIFRA sec. 6(e). Your release for shipment of the product constitutes acceptance of these conditions.

A stamped copy of the label is enclosed for your records.

Dennis H. Edwards, Jr.

DHE

Product Manager 19  
Insecticide-Rodenticide Branch  
Registration Division (H7505C)

enclosure



(Front Panel)

RESTRICTED USE PESTICIDE

Due to very high acute toxicity to humans and birds

For retail sale to and use only by certified commercial applicators or persons under their direct supervision and only for those uses covered by the certified commercial applicators' certification. Direct supervision for this product is defined as the certified commercial applicator being physically present during mixing, loading, repair and cleaning of application equipment. Certified commercial applicators must also ensure that all persons involved in these activities are informed of the precautionary statements.

ACQUA...  
with...  
EPA Letter...

OCT 17 1991

R®

DITHON 63

Under the Federal Insecticide, Fungicide, and Rodenticide Act as amended, for the pesticide registered under EPA Reg. No. 9779-323

For use only on alfalfa, barley, canola, corn, cotton, sorghum, soybeans, sunflower and wheat.

ACTIVE INGREDIENTS

O,O-diethyl O-p-nitrophenyl phosphorothioate*.....	56.3%
Related compounds.....	1.8%
O,O-dimethyl O-p-nitrophenyl phosphorochioate**...	28.0%
Related compounds.....	1.1%
INERT INGREDIENTS***.....	12.8%
TOTAL	100.0%

\*Parathion (also known as ethyl parathion)

\*\*Methyl parathion

\*\*\*Contains 7.3% of aromatic petroleum solvent.

Contains 6 pounds parathion and 3 pounds methyl parathion per gallon.

(Front Panel)

STOP-READ LABEL BEFORE USING.

KEEP OUT OF REACH OF CHILDREN

**DANGER**  
**PELIGRO**  
**POISON**  
**VENENO**



**PRECAUCION**  
**AL USUARIO**  
Si usted no lee ingles,  
no use este producto  
hasta que la etiqueta  
le haya sido explicada  
ampliamente.

**STATEMENT OF PRACTICAL TREATMENT**

**FIRST AID TREATMENT +** Call a doctor (physician), clinic or hospital immediately. Explain that the victim has been exposed to parathion-methyl parathion and describe his condition.

**IF BREATHING HAS STOPPED:** Start artificial respiration immediately and maintain until doctor sees victim.

**IF SWALLOWED:** Call a physician or poison control center. Drink 1 or 2 glasses of water and induce vomiting by touching back of throat with finger, or, if available, by administering syrup of ipecac. Do not induce vomiting or give anything by mouth to an unconscious person.

**IN CASE OF CONTACT:** Immediately flush eyes or skin with plenty of water for at least 15 minutes while removing contaminated clothing and shoes. See doctor immediately.

See additional PRECAUTIONARY STATEMENTS on side panel.

EPA Reg. No. 9779-

EPA Est. No. 9779-TX-3

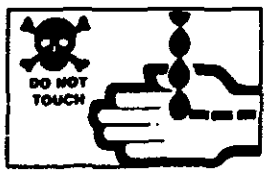
Manufactured For  
**RIVERSIDE/TERRA CORPORATION**  
Terra Centre, 600 Fourth Street, Sioux City, Iowa 51101  
Riverside Serves Agriculture. Agriculture Serves Everyone.

**NET CONTENTS**  
\_\_\_\_\_ **GALS.**

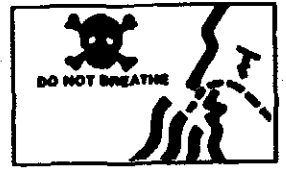
PRECAUTIONARY STATEMENTS  
DANGER  
HAZARDS TO HUMANS AND DOMESTIC ANIMALS



**CAN KILL IF SWALLOWED**  
This product can kill you if swallowed, even in small amounts spray mist may be fatal if swallowed.



**CAN KILL BY SKIN CONTACT**  
This product can kill you if touched by hands or spilled or splashed on skin, in eyes or on clothing (liquid goes through clothes).



**CAN KILL IF BREATHED**  
This product can kill you if vapors or spray mist are breathed.

WORK SAFETY RULES

The National Pesticide Telecommunication Network is available for recommendations regarding poisoning management, emergency treatment, and other information regarding the toxicity of parathion-methyl parathion. The toll free number for the National Pesticide Telecommunication Network is 1-800-858-7378. If handled indoors, provide mechanical exhaust ventilation. Keep all unprotected persons, children, livestock, and pets away from treated area or where there is danger of drift. Do not rub eyes or mouth with hands. If you feel sick in any way, STOP work and get help right away. See First Aid (PRACTICAL TREATMENT) section.

**IMPORTANT!** If pesticide comes in contact with skin, wash off with soap and water and contact a physician immediately. Always wash hands, face, and arms with soap and water before smoking, eating, drinking, or toileting.

**AFTER WORK:** Before removing gloves, wash them with soap and water. Take off all work clothes and shoes. Shower using soap and water. Wear only clean clothes when leaving the job. Do not wear contaminated clothing. Personal clothing worn during work must be stored and laundered separately from protective clothing and household articles. Store protective clothing separately from personal clothing. Clean or launder protective clothing after each use. Respirators must be cleaned and filters replaced according to instructions included with the respirators. Protective clothing and protective equipment heavily contaminated or drenched with parathion-methyl parathion must be destroyed according to state and local regulations. Heavily contaminated or drenched clothing cannot be adequately decontaminated. During aerial application, human flaggers are prohibited.

POISON SIGNS (Symptoms) ☠

Parathion-methyl parathion is a very dangerous poison. It rapidly enters the body on contact with all skin surfaces and eyes. Clothing wet with this material must be removed immediately. Exposed persons must receive prompt medical treatment or they may die.

7713

Some of the signs and symptoms of poisoning are headache, nausea, vomiting, cramps, weakness, blurred vision, pin-point pupils, tightness in chest, labored breathing, nervousness, sweating, watering of eyes, drooling or frothing of mouth and nose, muscle spasms and coma.

#### NOTE TO PHYSICIAN

Antidote--administer atropine sulfate in large doses. TWO to FOUR mg. intravenously or intramuscularly as soon as cyanosis is overcome. Repeat at 5 to 10 minute intervals until signs of atropinization appear. 2-PAM chloride is also antidotal and may be administered in conjunction with atropine. DO NOT GIVE MORPHINE OR TRANQUILIZERS. Parathion-methyl parathion is a strong cholinesterase inhibitor affecting the central and peripheral nervous systems and producing cardiac and respiratory depression. At first sign of pulmonary edema, the patient should be given supplemental oxygen and treated symptomatically. Continued absorption of the poison may occur and fatal relapses have been reported after initial improvement. VERY CLOSE SUPERVISION OF THE PATIENT IS INDICATED FOR AT LEAST 48 HOURS.

#### ENVIRONMENTAL HAZARDS

This pesticide is highly toxic to fish, aquatic invertebrates, and wildlife. Birds in treated areas may be killed. Shrimp and other aquatic organisms may be killed at recommended application rates. Do not apply directly to water, to areas where surface water is present, or to intertidal areas below the mean high water mark. Runoff and drift from target areas may be hazardous to aquatic organisms in adjacent aquatic sites. Do not contaminate water when disposing of equipment washwaters. This product is extremely toxic to bees exposed to direct treatment or residues on blooming crops or weeds. Do not apply this product or allow it to drift to blooming crops or weeds if bees are visiting the treatment area.

#### PHYSICAL OR CHEMICAL HAZARDS

Do not use or store near heat or open flame.

---

## DIRECTIONS FOR USE

It is a violation of Federal law to use this product in a manner inconsistent with its labeling.

Do not apply this product through any type of irrigation system.

This product may not be applied to any crop other than alfalfa, barley, canola, corn, cotton, sorghum, soybeans, sunflower and wheat. Any treated crop may be harvested only by mechanical means; hand harvesting of a treated crop is prohibited.

### REENTRY STATEMENT

General Reentry Limitation: While an area is being treated with this product and during the first three days after treatment (six days after treatment if the crop treated is corn) or any longer period of time prescribed by State law or regulation, no person may enter or remain in the treated area or within 100 feet of the treated area.

Exception: After four (4) hours have passed since the end of the application, a person may enter an area under reentry restrictions to perform scouting or irrigation-related work in accordance with the following requirements:

No person shall remain in any area under reentry restrictions for a total of more than 1 hour in any 24-hour period.

Before entering the treated area, the person must have read the product labeling or have been informed, in a language that the person can understand, of all the requirements of the product's labeling related to human hazards or precautions, first aid, symptoms of poisoning, personal protective equipment specified for early entry, and any other labeling requirements related to safe use.

The person must wear personal protective equipment consisting of a cotton or other fabric coverall worn over a long-sleeved shirt and long pants, chemical resistant boots, and chemical resistant gloves, and shall take appropriate measures to prevent heat-related illness.

The person must carry an eye-flush dispenser containing at least one pint of water.

A reasonably accessible decontamination site must be available with adequate supplies of potable water for washing, soap, and single-use towels. After restricted reentry activity, the person must be provided soap, clean towels, and a sufficient amount of potable water for washing and must wash thoroughly after removing personal protective equipment.

All personal protective equipment worn during restricted reentry must be laundered separately and may not be worn home.

Posting of Treated Areas: Treated areas shall be posted with signs at all usual points of entry or in the corners of the treated areas affording maximum visibility. Written warnings must include the following information: DANGER: Area treated with Parathion-Methyl Parathion on (date). Do not enter. Consult your State Agricultural Extension Service or Experiment Station regarding posting treated areas.

9713

RESTRICTIONS APPLICABLE TO ETHYL PARATHION

LIMITS ON APPLICATION

**Aerial Application Only:** This product may be applied aurally, and only by a certified commercial applicator as defined in FIFRA § 2(e)(3).

**Areas Where Application Is Prohibited:** This product may not be applied within 100 feet of buildings, public roads or bodies of water. Parathion may not be applied within 100 feet of property lines unless the owner of the adjacent property has given prior written consent to the application and has been informed of the timing of the application and the appropriate reentry requirements.

**Drift Reduction Measures:** Do not apply this product if the wind exceeds 10 miles per hour. Apply only from nozzles located not more than 75% of the distance from the center of the aircraft to the wing tip or helicopter rotor tip.

**Notification to Land Owner:** A certified commercial applicator shall not apply this product to a person's property unless the applicator has notified the person in writing no more than 12 months before the date of the application of: the requirement that crops treated with parathion be harvested mechanically; the appropriate reentry interval and the requirements concerning reentry set forth on this label; and the incident reporting requirements set forth on this label.

PROTECTION OF APPLICATORS, MIXER-LOADERS, AND MAINTENANCE PERSONNEL

**Applicator Protection:** The cockpit of the aircraft used to apply this product must be fully enclosed while the product is being applied. No pilot may apply this product if the pilot has earlier during the day of application performed any mixing/loading activities (other than acting as an observer) involving any pesticide product containing parathion.

**Maintenance Personnel Protection:** The following protective clothing and equipment must be worn during repair, cleaning of application equipment, and disposal of pesticide: waterproof-suit of one or two pieces covering all parts of the body except the head, hands, and feet; heavy-duty chemical resistant gloves; chemical resistant shoes (or chemical resistant shoe coverings or chemical resistant boots); goggles or face shield; hood or wide-brimmed hat; NIOSH approved respirator.

**Mixer-loader Protection:** An observer must be present during all mixing/loading activities in order to furnish assistance in the event of an accident. The observer may not act as a mixer-loader.

Any person involved in mixing/loading activities (other than the observer) must wear a cotton or other fabric coverall worn over a long-sleeved shirt and long pants, chemical resistant boots and gloves, and when the mixing/loading system is pressurized, a chemically resistant apron and a face shield or goggles.

The liquid pesticide must be removed from its original shipping container and transferred through connecting hoses, pipes, and/or couplings that are sufficiently tight to prevent handlers or other persons from contacting the parathion concentrate, use dilution, or rinsate solution. A complete seal by dry break or screw-on coupling to the opening of the original container shall be required.

All hoses, piping, tanks, and connections used in the system shall be of a type appropriate for the product being used and the pressure and vacuum levels involved. The system shall be designed and operated so that the concentrated form of this product is not under more than 25 psi of pressure at any point in the system beyond or downstream from a pump producing positive pressure. The closed system must be adequate to make necessary measurements of the product being used. External sight gauges shall be equipped with valves so that the flow of pesticide to the sight gauge can be shut off in case of breakage or leakage from the gauge.

Shut-off devices must be installed on the exit end of all hoses and at all disconnect points to prevent leakage of parathion when the transfer is stopped and the hose is removed or disconnected. If a hose carried parathion concentrate and has not been rinsed in accordance with the instructions in this section, a dry-couple shutoff device that will minimize parathion drippage to not more than 2 ml. per disconnect must be installed at the disconnect point. If the hose carried diluted-for-use parathion or rinsate solution, a reversing action pump or a similar system that will empty the hose and eliminate dripping of liquid from the end of the hose may be used as an alternative to a shut-off device.

In mixing/loading operations do not pour this product from its container. Before opening the container, make sure that the container is resting securely on the ground or a sturdy support, with the top (opening) end up and approximately level.

Remove the product from the container only by use of a vacuum-producing pump system connected to a probe system that is listed by the State of California under that State's program establishing criteria for closed-system handling of Toxicity Category I pesticides. Examples of California-listed systems are the Chemprobe® Model II system sold by Cherlor Mfg. Co., Inc., P. O. Box 2174, Salinas, CA 93902, telephone 408-422-5477 or the Protect-O-Loader Model XM-1 system sold by Protecto Mfg. Co., 20189 Firerock Road, Bend, OR 97701, telephone 503-382-6886. The probe system shall be screwed into the threaded opening in the top of the container to form a watertight connection, using appropriate adaptors provided by the probe manufacturer as necessary. The instructions provided by the seller of the probe system shall be followed, except that a removable probe may not be removed from the container until the container is empty and the container and probe have been thoroughly rinsed as required by this section.

The closed-system must provide for adequate rinsing of any removable probe and of all containers that are not labeled for return to the registrant. Rinsing must be done using a liquid that contains no pesticide. The rinsing system must be capable of spray-rinsing the inner surface of the container. The rinse solution shall be removed from the pesticide container concurrent with the introduction of the rinse medium. The rinse solution shall go into the pesticide mix tank or applicator vehicle via the closed system.

The system shall be rinsed according to the specifications of the manufacturer of the probe system, or, in the absence of such specifications, by moving at least one half of the container volume through the system. A minimum pressure of 15 psi shall be used for the spray rinse. Parathion containers shall be protected against excessive pressure during the container rinse operation. Measures shall be taken to prevent the spray rinse procedure from causing an increase in pressure on the inside of the container walls of more than 5 psi.

11 9 13

Either the operator of the closed system must have available at the time of operation a complete set of written instructions for proper operation of the system, or the certified applicator must document in writing before an operator uses the closed system that the operator has been adequately trained in the proper operation of the system.

#### INCIDENT REPORTING

A telephone notification must be made if mixing, loading, or use of a product containing parathion results in inadvertent or unexpected human exposure to the product or illness resulting from exposure to the product, spill of the product, an investigation by Federal, State or local authorities of allegations involving drift of the product, or the deaths of birds or other wildlife. The certified applicator or the owner of the treated land must notify by telephone the Chief, Compliance Branch, Office of Compliance Monitoring, U.S. EPA, at 202-260-3375 within seven days of becoming aware of the incident.

#### STORAGE AND DISPOSAL

DO NOT CONTAMINATE WATER, FOOD, OR FEED BY STORAGE OR DISPOSAL.

##### STORAGE

Store in a dry location away from children, animals, foods, feeds, seeds, and other agricultural chemicals. Keep container closed when not using. Do not allow water into container as this may cause deterioration of product. Handle in accordance with information given under PRECAUTIONARY STATEMENTS. Do not store under conditions where temperature may exceed 120°F or below 45°F. Keep storage area locked when not in use. In the event of spillage or leakage, soak up material with absorbent clay, sand, sawdust, or other absorbent material while wearing appropriate protective equipment. Scrape up and dispose of in accordance with information given under PESTICIDE DISPOSAL. In case of fire or other emergency, report at once by toll-free telephone to 800-424-9300.

##### DISPOSAL

**PESTICIDE DISPOSAL:** Pesticide wastes are acutely hazardous. Improper disposal of excess pesticide, spray mixture, or rinsate is a violation of Federal law. If these wastes cannot be disposed of by use according to label instructions, contact your State Pesticide or Environmental Control Agency or the Hazardous Waste representative at the nearest EPA Regional Office for guidance.

**CONTAINER DISPOSAL:** Metal Containers--Triple rinse (or equivalent). Then offer for recycling or reconditioning, or puncture and dispose of in a sanitary landfill, or by other procedures approved by state and local authorities.

#### GENERAL INFORMATION

Dithon 63 may be applied by airplanes mixing Dithon 63 in water to form an emulsion spray solution. To make the spray solution, half fill the spray tank with water while still agitating. Continue to agitate during use.

Airplanes should apply the recommended amount of Dithon 63 in not less than 1 gallon of water per acre. Always use sufficient water for adequate coverage of the crop foliage.



Where a dosage range is given, use the lower rate on small or young plants or with light insect infestations; use the higher rate on large or mature plants or with heavy insect infestations.

The hazards and precautions for handling DITHON 63 in this container are equally applicable to it after dilution with water for spray application.

Use of this product in a manner not in accordance with the information on this label may injure or kill humans, domestic animals, wildlife, aquatic life, desirable plants, create excessive and unlawful chemical residues or produce other undesirable results.

**ALFALFA:** For control of aphids (greenbugs), spotted alfalfa aphid, alfalfa weevil larvae, alfalfa caterpillars, armyworms (up to third instar), climbing cutworms and grasshoppers, use 1/3 to 2/3 pint per acre. For blister beetles, webworms and spider mites, use 1/2 pint per acre. For troctricid moths and clover leaf weevils, use 2/3 pint per acre. Do not apply if the crop or weeds in the treatment area are in bloom. Do not reenter treated fields for 3 days.

**CANOLA (For oil):** Not for use in California. For cabbage seedpod weevil, use 1/2 to 1 pint per acre. Make first application when two or more weevils may be found per plant on young pods. Use higher rate during cool weather or where infestations are heavy. If treatment is necessary during bloom, treat only from evening to morning to protect bees. Do not apply later than 3 hours after sunrise. Do not graze treated field or feed foliage or trash to livestock. Do not apply within 28 days of harvest. Do not reenter treated fields for 3 days.

**CORN (Field, Pop and Sweet):** For control of rootworm adults, use 1/3 pint per acre. For aphids, armyworms up to third instar, fall armyworms, budworms, spider mites, and climbing cutworms, use 1/2 pint per acre. For stink bugs use 3/4 pint per acre. For European corn borer control use 3/5 pint per acre. Apply first spray when 75% of corn plants show shot-hole feeding and follow with two additional sprays at 5 to 7 day intervals. Use sufficient water per acre to provide complete coverage and be certain whorls of plants are well treated. Do not apply to corn during the pollen shed period. Do not apply Dithon 63 to corn within 12 days of harvest, cutting, or forage use. Do not reenter treated fields for 6 days.

**COTTON:** For control of cotton leafworms, fleahoppers, Lygus bugs, red spider mites, thrips and garden webworms, use 1/2 pint per acre. For control of cabbage loopers and boll weevils, use 2/3 to 1 1/3 pints per acre. For bollworms and budworms use 1 1/3 pints per acre. For aphids, cotton leaf perforators, armyworms up to third instar, stink bugs and saltmarsh caterpillars, use 1 pint per acre. Application to cotton should be made at 4 to 5 day intervals until control is obtained. Do not reenter treated fields for 3 days.

**SMALL GRAINS (Barley, Wheat):** For control of armyworms up to third instar, fall armyworms, winter grain mites and thrips, use 1/4 pint per acre. For aphids (greenbugs) use 1/3 pint per acre. For grasshoppers and brown wheat mites, use 1/2 pint per acre. For climbing cutworms, leafhoppers and Say's plant bugs, use 1/2 to 3/4 pint per acre. For chinch bugs and false chinch bugs, use 1 pint per acre. Do not apply Dithon 63 to small grains within 15 days of harvest, pasturing, cutting, or forage use. Do not reenter treated fields for 3 days.

**SORGHUM:** For control of corn earworms, corn-leaf aphids, false chinch bugs and sorghum webworms, use 1/3 pint per acre. For sorghum midges, use 1/2 pint per acre. Leaf injury may occur on some hybrid varieties of sorghum. Spray a few rows a week or so before booting to test effects upon plants. Do not apply Dithon 63 to sorghum within 21 days of harvest, cutting or forage use. Do not reenter treated fields for 3 days.

**SOYBEANS:** For control of two-spotted mites, use 1/2 pint per acre. For stink bugs use 2/3 pint per acre. For bollworms, fall armyworms, green cloverworms, velvet bean caterpillars and webworms, use 7/8 pint per acre. Do not apply more than 2 applications per growing season. Do not apply Dithon 63 to soybeans within 20 days of harvest or forage use. Do not reenter treated fields for 3 days.

**SUNFLOWERS:** For control of beetles, grassoppers, seed weevil, moth, maggot, and stem weevil, use 1/2 to 1 pt. per acre. Do not apply more than 3 times at 5-day intervals per season. Do not feed seed to birds. Do not apply within 30 days of harvesting, pasturing, cutting or foraging. Do not reenter treated fields for 3 days.

**NOTICE:** Seller warrants that the product conforms to its chemical description and is reasonably fit for the purposes stated on the label when used in accordance with directions under normal conditions of use, but neither this warranty nor any other warranty of merchantability or fitness for a particular purpose, express or implied, extends to the use of this product contrary to label instructions, or under abnormal conditions, or under conditions not reasonably foreseeable to Seller and Buyer assumes the risk of any such use.