

RIVERSIDE STAND 10D

**CONTAINS 10% CHLORONEB (DEMOSAN*) FUNGICIDE.
USEFUL FOR THE CONTROL OF CERTAIN SEEDLING DISEASES OF COTTON.**

*DEMOSAN IS THE REGISTERED TRADEMARK IN THE U.S. OF E. I. DU PONT DE NEMOURS AND COMPANY, INC.

ACTIVE INGREDIENT:	
**1,4-dichloro-2,5-dimethoxybenzene	10%
INERT INGREDIENTS:	
	90%
	Total
	100%

**Demosan (U.S. Pat. 3,265,564)

CAUTION: KEEP OUT OF REACH OF CHILDREN

MAY IRRITATE EYES, NOSE, THROAT AND SKIN.

Avoid breathing dust.

Avoid contact with skin, eyes, clothing.

Do not contaminate water by cleaning of equipment, or disposal of wastes.

Apply this product only as specified on this label.

READ ENTIRE LABEL BEFORE USING THIS PRODUCT: Use of this product in a manner not in accordance with the information on this label may injure or kill humans, domestic animals, wildlife, aquatic life, desirable plants, create excessive and unlawful chemical residues, or produce other undesirable results.

GENERAL INFORMATION

RIVERSIDE STAND 10D is recommended for use as a supplement to planter box treatment for cotton, or as an in-furrow soil treatment at planting time, for the control of cotton seedling diseases. It is to be used as an adjunct to standard fungicide seed treatment.

When used as directed, RIVERSIDE STAND 10D can be expected to improve stands and plant vigor through the suppression of seedling blights, damp-off, and soreshin caused by such organisms as Rhizoctonia, Phythium, and Sclerotium rolfsii. It is highly effective in preventing post-emergence damp-off, especially when used as a planter box treatment.

DIRECTIONS FOR USE

PLANTER BOX TREATMENT: Use at the rate of 5 lbs. RIVERSIDE STAND 10D per 100 lbs. of acid delinted reginned or fuzzy cottonseed. Use seed treated with a standard fungicide seed treatment. Thoroughly mix RIVERSIDE STAND 10D directly with seed in the planter box (hopper box) or in a separate container.

IN-FURROW TREATMENT: Apply RIVERSIDE STAND 10D at the rate of 10 to 20 pounds (based on 38 inch rows, or 13,700 linear feet) per acre at time of planting. Use planter-attached duster equipment.

NOTE: Do not use treated seed for food, feed or oil purposes. Do not graze or feed forage from treated areas to livestock.

DISPOSAL OF CONTAINER AND WASTES

Destroy all containers when empty by punching holes in them and burying with wastes. Do not burn. Do not reuse containers for other purposes.

NOTICE

Riverside Chemical Company warrants that the product conforms to its chemical description and is reasonably fit for the purposes stated on the label when used in accordance with directions with normal conditions of use, but neither this warranty nor any other warranty of merchantability or fitness for a particular purpose, express or implied, extends to the use of this product contrary to label instructions, or under abnormal conditions, or under conditions not reasonably foreseeable to Riverside Chemical Company, and buyer assumes the risk of any such use.

EPA REG. NO. 9779-196

NET CONTENTS 25 POUNDS



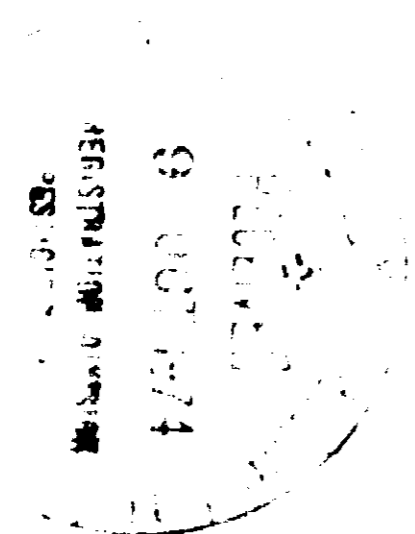
MANUFACTURED BY

RIVERSIDE CHEMICAL CO.

A SUBSIDIARY OF COOK INDUSTRIES, INC., MEMPHIS, TN 38117

Riverside serves agriculture. Agriculture serves everyone.

EPA Est. 9779-AL-1,2; AR-1,2; GA-1; LA-1; MS-1,2,3; TN-1; TX-1.



Colors: Black
GREEN COPY OF 1/11/75

