

KILL-A-PLENTY 162

Kill-A-Plenty 162 is an emulsifiable concentrate specifically formulated for use on cotton for control of most major insect pests such as the boll weevil, bollworms, cotton leafworm, thrips, cotton fleahopper, rapid plant bug, tarnished plant bug, aphids, salt marsh caterpillar, cutworms, brown cotton leafworms, and certain species of spider mites. Kill-A-Plenty 162 can be applied with conventional low volume, low pressure sprayers, or by airplane.

GENERAL DIRECTIONS

When preparing a spray solution using Kill-A-Plenty 162, first, half fill tank with part of the desired amount of water. Then add the desired amount of Kill-A-Plenty 162 to the tank with agitation (mechanical or overflow) in operation. Finish filling with water using agitation.

APPLICATION: Airplane - Use 1/3 gallon of Endrin-Methyl Parathion 162 in 3 - 10 gallons of water per acre consistent with crop growth and good coverage. Ground - Use 1/3 gallons of Endrin-Methyl Parathion 162 in 7 - 15 gallons of water per acre consistent with crop growth and good coverage.

DIRECTIONS FOR USE ON COTTON

FOR THRIPS AND COTTON FLEAHOPPERS, apply 1/2 pint to 1 pint per acre. For thrips, begin application at two leaf stage and repeat every 7 days until insects are under control.

FOR COTTON FLEAHOPPERS, begin application when insects appear and repeat every 5 to 7 days until insects are under control.

FOR BOLL WEEVIL, bollworms, rapid plant bug, tarnished plant bug, cotton leafworm, cabbage looper, salt marsh caterpillar, cutworms, aphids, and certain species of spider mites, apply 1 to 2 pints per acre depending on rankness of foliage and degree of infestation. Repeat every 5 days until insects are under control. For extremely heavy infestations of boll weevil and bollworm late in season, it may be necessary to reduce interval of application to 3 days.

Uniform coverage is necessary for best results. Make no application within 15 days of hand picking (harvest).



POISON

ANTIDOTE

IMMEDIATELY



ENDRIN - METHYL PARATHION 162

(CONTAINS 1.6 LBS. ENDRIN AND 2 LBS. METHYL PARATHION PER GAL.)
KILLS MAJOR INSECT PESTS — KILLS QUICKLY — GOOD RESIDUAL CONTROL — CONTROLS RESISTANT BOLL WEEVILS.

ACTIVE INGREDIENTS:	By Weight
Endrin (Hexachloroepoxyoctahydro-endo, endo-dimethanonaphthalene)	17.10%
O, O-Dimethyl O-p-nitrophenyl thiophosphate*	21.50%
Aromatic Petroleum Solvent	55.00%
INERT INGREDIENTS:	6.40%
TOTAL	100.00%

*Methyl Parathion

DANGER!



POISON



KEEP OUT OF REACH OF CHILDREN

See antidote statement and other warnings on the back/side panel.

Do not graze dairy animals or animals being finished for slaughter in treated fields.

DO NOT apply to cotton within 15 days of hand picking. Use only on recommended crops and at recommended dosages. DO NOT apply or allow to drift to area being grazed by dairy animals or animals being finished for slaughter or to area where there are unprotected human beings.

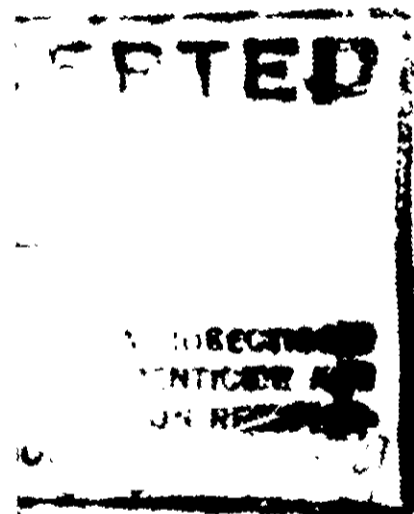
Seller makes no warranty, expressed or implied, concerning the use of this product other than indicated on the label. Buyer assumes all risk of use and/or handling of this material when such use and/or handling is contrary to label instructions.

Net Contents Gallons

Manufactured by

Adkins-Phelps, Inc.

1000 W. 10th Street
 Oklahoma City, Oklahoma 73101



V
 1000 W. 10th Street
 Oklahoma City, Oklahoma 73101
 PH

"This compound contains Methyl Parathion exerts the para-sympathetic ne-sympathetic depressant, tolerance, is indicated to oxygen is helpful. Neve Parathion poisoning. In cases of poisoning wit therapy are ad ministerec treatment may be necess

KILL-A-PLENTY 162

Kill-A-Plenty 162 is a water-soluble concentrate specifically formulated to be effective against most major insect pests such as the boll weevil, fleahoppers, thrips, and worms on the pro-cotton and upland cotton plants. It is also effective against aphids, salt marsh caterpillars, tobacco hornworms, and certain species of spider mites. Kill-A-Plenty 162 is formulated with conventional low volatility active ingredients and is safe to use.

GENERAL DIRECTIONS

When preparing a spray solution using Kill-A-Plenty 162, first fill the tank with part of the desired amount of water. Then add the desired amount of Kill-A-Plenty 162 to the tank with agitation (mechanical or overflow operation). Fill the tank with water using agitation.

APPLICATION: A rate of 1/2 gallon of Endrin-Methyl Parathion 162 in 10 gallons of water per acre is best with crop growth and good coverage. Use 7-15 gallons of Endrin-Methyl Parathion 162 in 7-15 gallons of water per acre consistent with crop growth and good coverage.

DIRECTIONS FOR USE ON COTTON

FOR THRIPS AND COTTON FLEAHOPPERS, apply 1/2 pint to 1 pint per acre. For thrips, begin application at two leaf stage and repeat every 7 days until insects are under control.

FOR COTTON FLEAHOPPERS, begin application when insects appear and repeat every 5 to 7 days until insects are under control.

FOR BOLL WEEVIL, apply 1/2 gallon of plant bug, tarnished plant bug, cotton leafworm, cabbage looper, salt marsh caterpillar, cutworm, and tobacco hornworm. For boll weevils, apply 1 to 2 pints per acre depending on the extent of infestation and degree of infestation. For other insects, apply 1/2 to 1 pint per acre. For cotton leafworm, cabbage looper, salt marsh caterpillar, cutworm, and tobacco hornworm, apply 1/2 to 1 pint per acre. For boll weevils, apply 1 to 2 pints per acre.

For more information on the use of Kill-A-Plenty 162, consult the label on the product container.

(CONTAINS 1.6 LBS. ENDRIN AND 2 LBS. METHYL PARATHION PER GAL.)
KILLS MAJOR INSECT PESTS — KILLS QUICKLY — GOOD RESIDUAL CONTROL — CONTROLS RESISTANT BOLL WEEVILS.

ACTIVE INGREDIENTS:	By Weight
Endrin (Hexachloroepoxyoctahydro-endo, endo-dimethanonaphthalene)	17.10%
O, O-Dimethyl O-p-nitrophenyl thiophosphate	21.50%
Aromatic Petroleum Solvent	55.00%
INERT INGREDIENTS:	6.40%
TOTAL	100.00%

*Methyl Parathion

See entire label statement and other warnings on the back of the label.

Do not graze dairy animals or animals being finished for slaughter in treated fields.

DO NOT apply to cotton within 15 days of hand picking. Use only on recommended crops and at recommended dosages. DO NOT apply or allow to drift to area being grazed by dairy animals or animals being finished for slaughter or to area where there are unprotected human beings.

Save this label for future reference. Do not use the label of this product on other than the crops and insects listed on the label. For more information on the use of Kill-A-Plenty 162, consult the label on the product container.

PHY

fically for-
insect pests
hips, cotton
salt marsh
in species
nventional

first half
n add the
ation (re-
ater using

Parathion
op growth
ethyl Para-
with crop

N
to 1 pint
and repeat

cts appear
rol.

hed plant
pillar, cut-
ily 1 to 2
ree of in-
ontrol. For
m late in
ation time

pplication



**(CONTAINS 1.6 LBS. ENDRIN AND 2 LBS. METHYL PARATHION PER GAL.)
KILLS MAJOR INSECT PESTS — KILLS QUICKLY — GOOD RESIDUAL CON-
TROL — CONTROLS RESISTANT BOLL WEEVILS.**

ACTIVE INGREDIENTS:	By Weight
Endrin (Hexachloroepoxyoctahydro-endo- endo-dimethanonaphthalene)	17.10%
O, O-Dimethyl O-p-nitrophenyl thiophosphate*	21.50%
Aromatic Petroleum Solvent	55.00%
INERT INGREDIENTS:	6.40%
TOTAL	100.00%

*Methyl Parathion

See printed statement and other warnings on the back side panel.
Do not graze dairy animals or animals being finished for slaughter in treated fields.
DO NOT apply to cotton within 15 days of hand picking. Use only on recommended crops and at recommended dosages. DO NOT apply or allow to drift to area being grazed by dairy animals or animals being finished for slaughter or to area where there are unprotected human beings.

Some insects are resistant to endrin. In using the use of this product, there is a risk of injury to man and animals. It is recommended that you read the label carefully and follow the directions.

PHYSICIAN'S NOTE

This is a general statement and should not be used as a basis for diagnosis. Parathion is a potent insecticide and should be used with care. It is highly toxic to man and animals. It is recommended that you read the label carefully and follow the directions. It is a potent insecticide and should be used with care. It is highly toxic to man and animals. It is recommended that you read the label carefully and follow the directions.

