

## DIRECTIONS FOR USE

Mix the recommended amount of product with sufficient water to obtain good spray coverage. Do not mix this product with oil. Best results are obtained when spraying is done while the weeds are young and actively growing.

On Fall-Planted Wheat, Oats, and Barley - Use 1 to 1 1/2 pints of product in 5-10 gallons of water to cover one acre. Apply in early spring when weeds are small and before the crop has reached the boot stage. Do not forage or graze treated grain fields within 2 weeks after treatment with 2,4-D. Do not feed treated straw to livestock.

On Spring-Planted Wheat, Oats, and Barley - Use 1 pint in 5-10 gallons of water to cover one acre. Apply after the fully tillered stage, except during the boot to dough stage. Do not forage or graze treated grain fields within 2 weeks after treatment with 2,4-D. Do not feed treated straw to livestock.

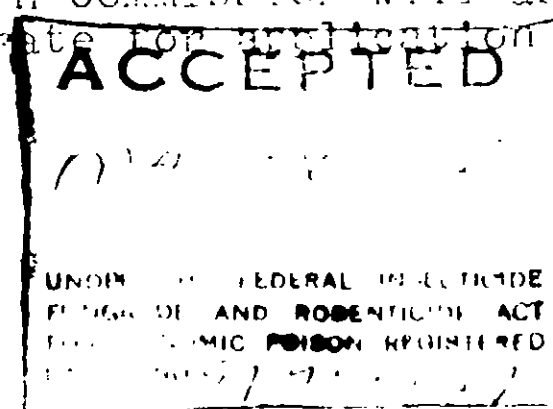
On Corn and Sorghum - Use 1 pint in 5-10 gallons of water to cover one acre when weeds are in active growth. Local climatic conditions determine when treatment should be made. Best results are usually obtained when weeds are small and corn is 4-18 inches tall. Do not apply from tasseling to dough stage. Treat sorghum when 4-12 inches tall. Use drop nozzles when either crop is over 10 inches tall.

On Flax - Use 1/2 pint in 10-15 gallons of water to cover one acre when flax is 3 inches high to first bud stage. Do not apply after flax has formed flower buds.

On Rice - Use 1 to 1 1/2 quarts in 5-10 gallons of water to cover one acre when weeds are in active growth stage. Rice plants are sensitive to 2,4-D in early stage of growth; therefore, it is advisable to delay spraying until the second or third week after flooding. Water in the field should be shallow enough to permit direct application of the spray material to the weeds. Make all treatments well in advance of heading.

On Pastures, Ornamental Turf, and Noncrop Areas - Use 1 to 2 quarts and enough water to give sufficient coverage to one acre on established stands of perennial grasses, depending on type of weed and stage of growth. Do not use on creeping grasses such as bent except for spot spraying. Newly seeded turf should not be treated until after the second mowing, and the lower dosage should be used.

For Aquatic Weeds in lakes, ponds, drainage ditches, and marshes - Use 2 1/2 to 4 1/2 pints of product in 50 to 100 gallons of water per acre. Apply in enough water to wet foliage thoroughly. Application should be made when leaves are fully developed above water line and plants are actively growing. Your State Conservation Department and Fish Commission will assist you in determining the best time and rate for application under local conditions.



DO NOT apply to more than 1/3 to 1/2 of a lake or pond in any one month, because excessive decaying vegetation may deplete oxygen content of water, killing fish.

Perennial and Other Hard-to-Control Weeds may require a repeat application to give adequate control.

#### WARNING

DO NOT apply this product to susceptible beneficial plants that are desirable such as cotton, soybeans, tomatoes, grapes, clover, ornamentals. Excessive amounts of this product in the soil may temporarily inhibit seed germination and all plant growth.

Minute quantities may cause severe injury by drift. Avoid drift of spray and use a coarse spray which is less likely to drift.

DO NOT contaminate water in irrigation ditches or water used for domestic purposes.

Users should note that herbicide treatment of public waters requires a permit from appropriate state agencies in most states. Your State Conservation Department or Game and Fish Commission will aid you in securing a permit if required in your state.

DO NOT apply this product to desirable legumes, such as white clover. These are susceptible to the chemical and may be severely damaged or killed.

Dichondra may be injured by 2,4-D.

DO NOT graze dairy animals on treated areas within seven days after application.

DO NOT store this product near fertilizers, seeds, insecticides, or fungicides. DO NOT contaminate feed or feedstuffs.

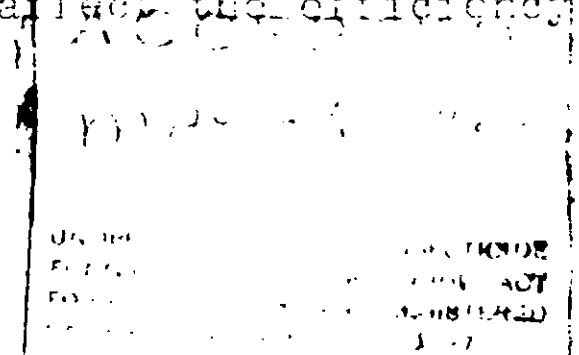
DO NOT use spray equipment contaminated with this product for any other purpose. DO NOT apply insecticides, fungicides, or other agricultural products unless the equipment has been cleaned very carefully with a suitable chemical cleaner.

If stored below freezing, it may be necessary to warm to 40°F. and agitate before using. This does not affect the efficiency of the product.

DO NOT mix with liquid fertilizer.

#### CAUTION

This product may cause skin irritation. Avoid inhaling spray mist. Do not take internally. Avoid contact with the eyes, skin, or clothing. Flush eyes with clear water and get prompt medical attention. Harmful if swallowed.



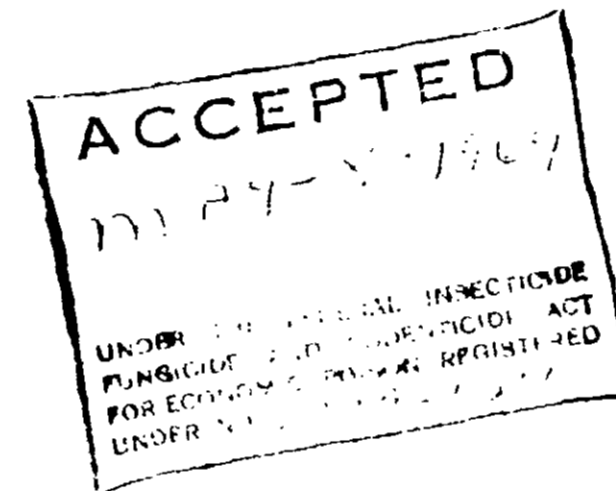
KEEP OUT OF REACH OF CHILDREN

NON WARRANTY STATEMENT

Seller warrants that the product conforms to its chemical description and is reasonably fit for the purposes stated on the label when used in accordance with directions under normal conditions of use, but neither this warranty nor any other warranty of merchantability or fitness for a particular purpose, express or implied, extends to the use of this product contrary to label instructions, or under abnormal conditions, or under conditions not reasonably foreseeable to seller, and buyer assumes the risk of any such use.

DISTRIBUTED BY: RIVERSIDE INDUSTRIES  
USDA REG. NO. 9779

MAKES, MISSISSIPPI



# RIVERSIDE DSMA LIQUID HERBICIDE

CONTAINS 3.6 POUNDS OF DSMA PER GALLON PLUS EFFECTIVE SURFACTANT.  
USEFUL FOR SELECTIVE POST-EMERGENT CONTROL OF CERTAIN GRASSES AND BROADLEAVED WEEDS IN  
COTTON, IN LAWNS AND ORNAMENTAL TURF, IN CERTAIN AGRICULTURAL PLANTINGS, AND IN NON-CROP AREAS.

#### ACTIVE INGREDIENTS:

Disodium Methanearsonate, anhydrous\* .....21.8%

INERT INGREDIENTS: .....78.2%

TOTAL .....100.0%

Total Arsenic (as elemental)  
all in water soluble form ..... 7.9%

\*Product contains 3.6 pounds Disodium  
Methanearsonate Hexahydrate per gal.

## CAUTION: KEEP OUT OF REACH OF CHILDREN

Harmful if swallowed. Avoid contact with skin. Avoid breathing spray mist. Wash hands after using. Do not store near feed or food products. Keep children and domestic animals off treated areas until this material has been washed into the soil.

Do not contaminate water by cleaning of equipment, or disposal of wastes.

ANTIDOTE: If taken internally induce vomiting and call a physician at once.

READ ENTIRE LABEL BEFORE USING THIS PRODUCT: Use of this product in a manner not in accordance with the information on this label may injure or kill humans, domestic animals, wildlife, aquatic life, desirable plants, create excessive and unlawful chemical residues, or produce other undesirable results.

#### GENERAL INFORMATION

RIVERSIDE DSMA LIQUID HERBICIDE is useful for selective post-emergent weed control, particularly for grassy weeds. It is a combination of herbicide and surfactants. IT IS UNNECESSARY TO ADD ANY OTHER SURFACTANT TO THE SPRAY SOLUTION. Best results are obtained on young, actively growing weeds at air temperatures above 70° F.

#### DIRECTIONS FOR USE

**COTTON:** RIVERSIDE DSMA LIQUID HERBICIDE is useful as a directed spray application to weeds in cotton for post-emergent control of grasses and broad-leaved weeds, including barnyardgrass, crabgrass, cocklebur, Dallisgrass, foxtail, goosegrass, Johnsongrass, morningglory, nutsedge, pigweed, puncture vine, ragweed, sandbur, and watergrass.

RIVERSIDE DSMA LIQUID HERBICIDE should be applied with a low volume sprayer having satisfactory pumping and bypass action. Nozzles should be placed so as to give good coverage of the grasses and weeds. Proper coverage is very important. Mix at a rate of 5 quarts of RIVERSIDE DSMA LIQUID HERBICIDE in 50 gallons of water to form the spray solution. Apply at a broadcast rate of 40 gallons of this solution per acre.

**PREPLANT APPLICATION:** If planting of cotton has been delayed and weeds have emerged, use one preplant application. Apply the spray solution at a broadcast rate of 40 gallons per acre. Cotton may be planted immediately following the preplant application.

**DIRECTED APPLICATION:** Direct the spray solution to the base of the cotton plant. Nozzles should be placed so as to avoid spraying the cotton foliage, but to give good coverage of the weeds and grasses. Apply the spray solution at a broadcast rate of 40 gallons per acre. For band application apply at a rate of 1 gallon of the spray solution per 1 inch of band width to be treated on cotton grown in 40 inch rows. A second application may be required during humid growing conditions. Time the second application, if necessary, about 1 to 3 weeks after the first application.

Slight burning and a reddish discoloration of the cotton leaves may occasionally occur following the recommended treatment but the cotton plant will develop normally.

**APPLY ONLY WHEN COTTON IS 3 INCHES HIGH TO FIRST BLOOM. DO NOT APPLY AFTER FIRST BLOOM. DO NOT FEED TREATED FOLIAGE TO LIVESTOCK, OR GRAZE TREATED FIELDS.**

**LAWN AND ORNAMENTAL TURF:** RIVERSIDE DSMA LIQUID HERBICIDE is useful for the control of bahiagrass, barnyard grass, chickweed, crabgrass, Dallisgrass, goosegrass, nutsedge, sandbur, and wood sorrel with little or no injury to good lawn grasses. On new lawns, do not treat until after three mowings. Good grasses may be temporarily discolored. Zoysia, bluegrasses, and bermuda are quite tolerant. Do not use on St. Augustine or centipede.

Mow lawns 1 to 1½ inches high before treatment. Mix 4 fluid ounces (8 tablespoons) of RIVERSIDE DSMA LIQUID HERBICIDE in 5 gallons of water and apply to an area of 1,000 square feet. Spray thoroughly to wet all undesirable plants. Repeat applications, 10 to 14 days apart, may be needed for good control.

**AGRICULTURAL PLANTINGS:** RIVERSIDE DSMA LIQUID HERBICIDE is useful as a directed application in non-bearing vineyards and in non-bearing deciduous fruit, nut, and citrus orchards, such as almond, apple, apricot, cherry, grapefruit, lemon, lime, orange, peach, pear, plum, prune and tangerine orchards. It should be applied at the rate of 3½ to 7 quarts per acre.

Mix RIVERSIDE DSMA LIQUID HERBICIDE at the rate of 3½ quarts in 50 gallons of water. Apply as a directed spray in interspaces and around bases of trees or vines. Spray unwanted vegetation to just short of run-off. If regrowth occurs, reapply as required. However, DO NOT EXCEED 3 APPLICATIONS PER YEAR.

DO NOT ALLOW SPRAY SOLUTION TO CONTACT LEAVES, STEMS, OR BARK. Use a shield, if necessary, for nursery plantings or young trees. DO NOT APPLY AROUND TREES OR VINES FROM WHICH FRUIT WILL BE HARVESTED WITHIN ONE YEAR OF TREATMENT.

**NON-CROP:** RIVERSIDE DSMA LIQUID HERBICIDE is useful for controlling crabgrass, cocklebur, Dallisgrass, goosegrass, Johnsongrass, morningglory, nutsedge, pigweed, ragweed, watergrass, and similar weeds on drainage ditch-banks, right-of-ways, storage yards and similar non-crop areas.

Mix RIVERSIDE DSMA LIQUID HERBICIDE at the rate of 2 to 4 quarts in 50 gallons of water. Spray the unwanted vegetation thoroughly to the point of run-off. Any spray equipment that gives good coverage may be used. If regrowth occurs, retreat as required.

**MIXING INSTRUCTIONS:** RIVERSIDE DSMA LIQUID HERBICIDE must be thoroughly dissolved. Fill the spray equipment reservoir about half full with water and add the required amount of herbicide with agitation. Finish filling the reservoir with water and apply. After use clean equipment thoroughly by flushing with water. Do not store spray solution in tanks for a prolonged period.

DO NOT CONTAMINATE WATERS USED FOR DOMESTIC CONSUMPTION OR BY ANIMALS, WILDLIFE AND AQUATIC LIFE, OR WATER FOR IRRIGATION PURPOSES.

#### CONTAINER DISPOSAL

Do not reuse empty container. Wash thoroughly with water and detergent, crush if possible, and discard in a safe place.

#### NOTICE

Riverside Chemical Company warrants that the product conforms to its chemical description and is reasonably fit for the purposes stated on the label when used in accordance with directions under normal conditions of use, but neither this warranty nor any other warranty of merchantability or fitness for a particular purpose, express or implied, extends to the use of this product contrary to label instructions, or under abnormal conditions, or under conditions not reasonably foreseeable to Riverside Chemical Company, and buyer assumes the risk of any such use.

EPA REG. NO. 9779-128

NET CONTENTS

EPA Est. 9779-AL-1,2; AR-1,2; GA-1; LA-1; MS-1,2,3; TN-1; TX-1.



MANUFACTURED BY

**RIVERSIDE CHEMICAL CO.**

CI DIVISION OF COOK INDUSTRIES, INC., MEMPHIS, TENN. 38116

Riverside serves agriculture. Agriculture serves everyone.

ACCEPTED WITH COMMENTS