

YVYV 2 6 7 7 7
UNION...
FUDGE...
POISON IVY...
POKEWEEED...
WILLI...

COPPER...
CRESOLIN...
DIBYL...

FLAM...
POISON IVY...
POKEWEEED...

...TREATMENT...

...the recommended amount of product...
volume of water to be used in spraying. Mix well, then add
remaining water and mix until spray mixture is uniform.

Best results are obtained when applications are made while
the plants are well leaved and actively growing.

On Fall-Planted Wheat, Oats, and Barley - Use 1/2 to 3/4
pint of product in 5 to 10 gallons of water to cover one
acre. Apply in early spring when weeds are small and be-
fore the crop has reached the boot stage. Do not forage
or graze treated grain fields within two weeks after treat-
ment with 2,4-D. Do not feed treated straw to livestock.

On Spring-Planted Wheat, Oats, and Barley - Use 1/2 pint
in 5 to 10 gallons of water to cover one acre. Apply after
the fully tillered stage, except during the boot to dough
stage. Do not forage or graze treated grain fields within
two weeks after treatment with 2,4-D. Do not feed treated
straw to livestock.

On Corn or Sorghum - Use 1/2 pint in 5 to 10 gallons of
water to cover one acre when weeds are in active growth.
Local climatic condition determines when treatment should
be made. Best results are usually obtained when weeds are
small and corn is 4 to 12 inches tall. Do not apply from
tasseling to dough stage. Treat sorghum when 4 to 12 inches
tall. Use drop nozzles when either crop is over 12 inches
tall.

For pre-emergence on corn use 1 to 2 quarts in 5 to 10
gallons of water per acre. Use the higher rate on heavy
soils. Do not use on sandy soils. Plant corn as deep
as feasible.

On Pastureland Pastures, and for General Weed Control - Use
1 to 4 pints in sufficient water to give good coverage to
one acre, depending on type of weeds and stage of growth.
Use only on established lands of perennial grasses.

For Annual Weeds in Lakes, ponds, drainage ditches, and
marshes - Use 2 1/2 to 4 1/2 pints of product in 10 to
100 gallons of water per acre. Spray to wet foliage thor-
oughly. Application should be made when leaves are fully

developed above the water line and plants are actively growing. Your State Conservation Department or Game and Fish Commission will assist you in determining the best time and rate for application under local conditions.

DO NOT APPLY to more than 1/3 to 1/2 of a lake or pond in any one month, because excessive decaying vegetation may deplete oxygen content of water, killing fish.

Perennial and other hard-to-control Weeds may require a repeat application to give adequate control.

WARNINGS

DO NOT apply this product to susceptible broad leaved plants that are desirable such as cotton, soybeans, tomatoes, grapes, clover, ornamentals. Excessive amounts of this product in soil may temporarily inhibit seed germination and plant growth.

may cause severe injury by drift or avoid drift of spray and use a coarse spray likely to drift. Although this product contains a small amount of low volatility, use it with caution where blowing of vapors can damage nearby susceptible plants.

DO NOT contaminate water in irrigation ditches nor water used for domestic purposes.

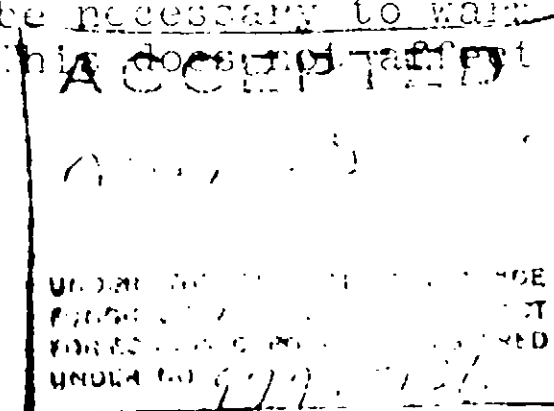
Users should note that herbicide treatment of public waters requires a permit from appropriate state agencies in certain areas. Your State Conservation Department or Game and Fish Commission will aid you in securing a permit if required in your state.

DO NOT graze dairy animals on treated areas within seven days after application.

DO NOT store this product near fertilizers, seeds, insecticides, or fungicides. DO NOT contaminate feed or food-stuffs.

DO NOT use spray equipment contaminated with this product for any other purpose. DO NOT apply insecticides, fungicides, or other agricultural products unless the equipment has been cleaned very carefully with a suitable chemical cleaner.

If stored below freezing, it may be necessary to warm to 40°F. and agitate before using. This does not affect the efficiency of the product.



CAUTION

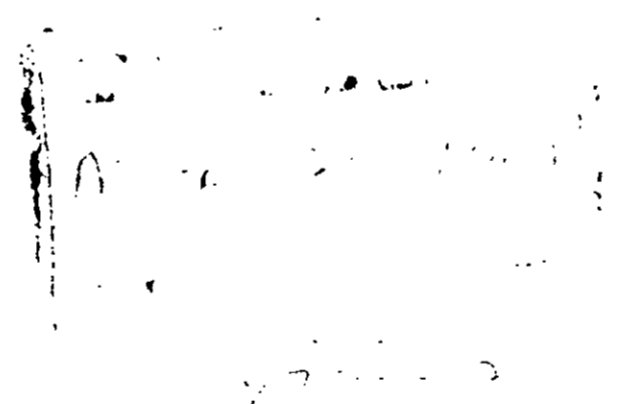
This product may cause skin irritation. Avoid inhaling spray mist. Do not take internally. Avoid contact with the eyes, skin, or clothing. Flush eyes with clear water and get prompt medical attention. Harmful if swallowed.

REVERSE SIDE OF PACKAGE CONTAINS DIRECTIONS

WARRANTY

Seller warrants that the product conforms to its chemical description and is reasonably fit for the purpose stated on the label when used in accordance with directions under normal conditions of use, but neither this warranty nor any other warranty of merchantability or fitness for a particular purpose, express or implied, extends to the use of this product contrary to label instructions, or under abnormal conditions, or under conditions not reasonable foreseeable to seller, and buyer assumes the risk of any such use.

DISTRIBUTED BY: REVERSID INDUSTRIES MARKS, MISSISSIPPI
ECHA REG. NO. 9779-



RIVERSIDE

HERBICIDE

A-40
2,4-D

ACCEPTED
MAY 8 1969
REGISTERED SUBJECT
PUNTS.

Contains 4 lbs. of 2,4-D Acid Equivalent per gallon

ACTIVE INGREDIENTS:

Diquat, the Salt of 2,4-Dichlorophenoxyacetic Acid 49.5%

(Equivalent to 4 lbs. of 2,4-Dichlorophenoxyacetic Acid)

INERT INGREDIENTS:

50.5%
TOTAL 100.0%

CAUTION

READ ENTIRE LABEL FOR ADDITIONAL HANDLING PRECAUTIONS.

KEEP OUT OF REACH OF CHILDREN

NON-FLAMMABLE AMINE SALT to control broad-leaved weeds in cereal crops, corn, sorghum, flax, papirus, rice, sorghum, fescue, turf; for aquatic weed control; for other noncrop uses.

WEEDS CONTROLLED

RIVERSIDE A-40 will kill or control the following in addition to many other noxious plants susceptible to 2,4-D.

- | | | |
|---------------------------------|---------------|------------------|
| ARROWHEAD | DUCKWEED | POVERTYWEED |
| ARTICHOKE | ELDERBERRY | PUNCTURE VINE |
| BINDWEED | GOLDENROD | PURSLANE |
| (hedge, field,
and European) | GROUND IVY | RUSSIAN THISTLE |
| BITTER WINTERGREEN | HEMF | SAGE PLANT |
| BOX ELDER | HOARY CRAB | SHEPHERD'S PURSE |
| BUCKHORN | HONEY SUCKLE | SMART WEEED |
| BULL THISTLE | INDIGO | SOW THISTLE |
| EULRUSH | IRONWOOD | STINKWEED |
| EUPHOCIA | JIMSON WEEED | SUNCO |
| EUR RAGWORT | LAMB-QUARTER | SUNFLOWER |
| BUTTERCUP | LOGO WEEED | VIRGINIA CREEPER |
| CANADA THISTLE | MEXICAN WEEED | WATER HYACINTH |
| CATNIP | MORNING GLOOM | WATER LILY |
| CHICKWEED | MUSTARD | WILD BURNING |
| CHICORY | NUTCRACK | WILD CARROT |
| COCKLEBUR | PARDON ME | WILD GARLIC |
| COFFEE BEAN | PENNYWORT | WILD ONION |
| CREEPING JENNY | PIGWEEED | WILD RICE |
| CURLY TROOP | PLANTAIN | WILD WEEED |
| | POTSMO IVY | |
| | POKEWEEED | |