

**RECOMMENDATIONS
FOR USE ON COTTON**

Effective for control of the following cotton insects: the boll weevil, the cotton leaf worm, the cotton aphid, the cotton fleahopper, red spider mites, and thrips.

Apply at the rate of 10-20 lbs. per acre.

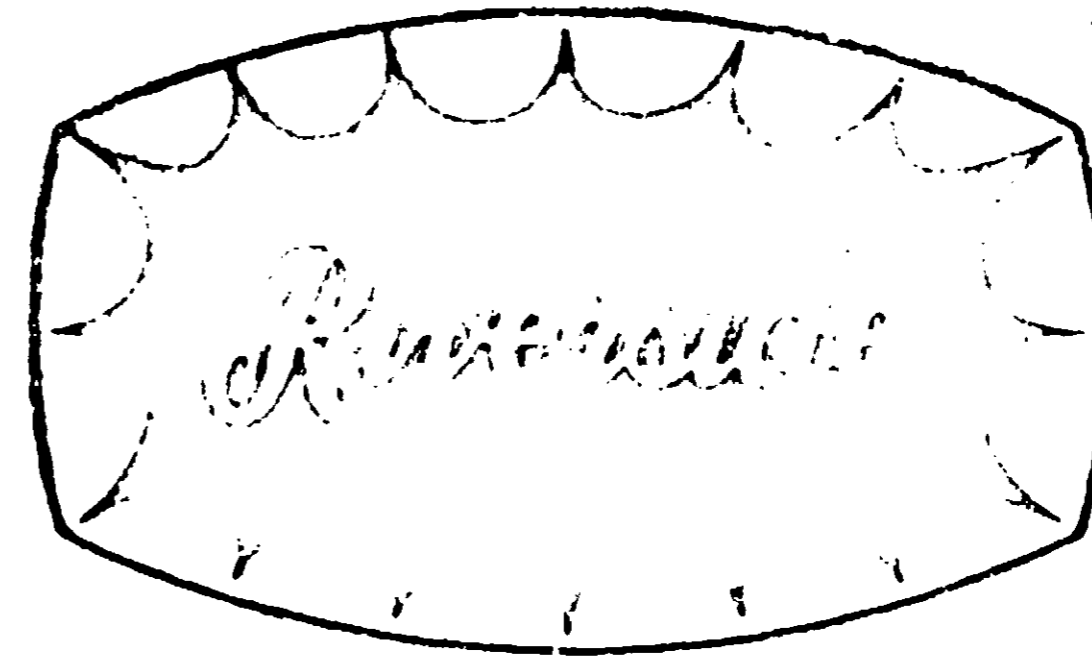
If applied by air, wind should be very light. Early morning or evening applications are recommended. Emphasis during applications should be on complete coverage. Repeat Applications as needed at 4 to 5 day intervals.

NOTE: Applications should not be made within 25 days of hand picking. It is best for all persons to stay out of treated fields for at least one day after application. Do not graze or feed dairy animals and animals being finished for slaughter on treated fields or on treated cotton trash.

CONSULT YOUR COUNTY AGENT or State Agricultural Extension Service for complete information. **DO NOT USE FOR ALL APPLICATIONS.**

NON WARRANTY. Seller warrants that the product conforms to its chemical description and is reasonably fit for the purpose stated on the label when used in accordance with directions under normal conditions of use, but neither this warranty nor any other warranty of merchantability or fitness for a particular purpose, express or implied, extends to the use of this product contrary to label instructions, or under abnormal conditions, or under conditions not reasonably foreseeable to seller, and buyer assumes the risk of any such use.

NET WEIGHT 50 POUNDS



**2.5% METHYL PARATHION
DUST**

ACTIVE INGREDIENTS

| | |
|--|---------------|
| O, O-Dimethyl O-p-Nitrophenyl Thiophosphate* | 2.5% |
| INERT INGREDIENTS | 97.5% |
| TOTAL | 100.0% |

*Otherwise known as Methyl Parathion

DANGER



POISON



Keep Out of Reach of Children
See Antidote Statement and Warning Statement
On Side Panel.

Manufactured by
Riverside Chemical Company
MARKS, MISSISSIPPI

DANGER:

Do not Destroy

This product through skin or on skin o

Wear natural case of cor mask or res Agriculture persons and where there re-entered u pated. Do n and face the Wash all co re-use. Keep

Do not apply

This product and ponds.

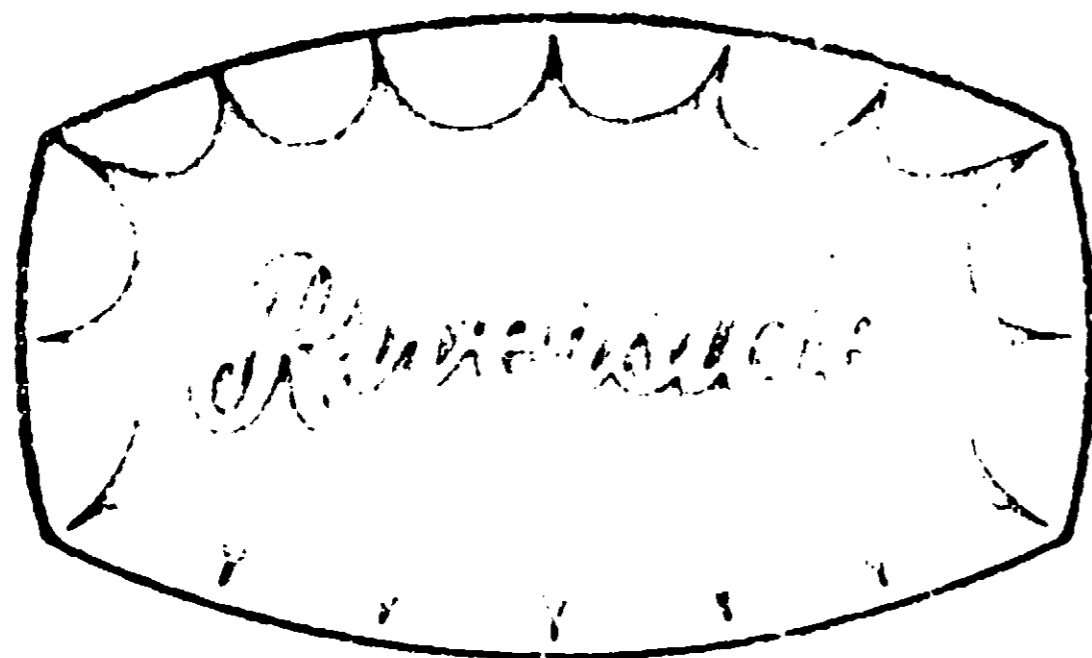
SYMPTOMS
Stomach pain

ANTIDOTE - salt in a gla Have victim

ANTIDOTE - contaminated water.

NOTE TO PH
i. e., stimula sympathetic symptoms. The

NET WEIGHT 50 POUNDS



2.5% METHYL PARATHION DUST

ACTIVE INGREDIENTS

| | |
|--|---------------|
| O, O-Dimethyl O-p-Nitrophenyl Thiophosphate* | 2.5% |
| INERT INGREDIENTS | 97.5% |
| TOTAL | 100.0% |

*Otherwise known as Methyl Parathion

DANGER



POISON



Keep Out of Reach of Children
See Antidote Statement and Warning Statement
On Side Panel.

Manufactured by
Riverside Chemical Company
MARKS, MISSISSIPPI

DANGER: — BEFORE USING, READ THIS LABEL CAREFULLY.

WARNING

Do not reuse empty containers.
Destroy when empty.

This product is **POISONOUS** if swallowed, inhaled or absorbed through skin! Rapidly absorbed through skin! Do not get in eyes or on skin or clothing.

Wear natural rubber gloves, protective clothing and goggles. In case of contact, wash immediately with soap and water. Wear a mask or respirator of a type passed by the U. S. Department of Agriculture for Methyl Parathion protection. Keep all unprotected persons and beneficial animals out of operating areas or vicinity where there may be danger of drift. Vacated areas should not be re-entered until drifting insecticide and volatile residues have dissipated. Do not contaminate feed and foodstuffs. Wash hands, arms, and face thoroughly with soap and water before eating or smoking. Wash all contaminated clothing with soap and hot water before re-use. Keep away from children.

Do not apply to cotton within 3 days of harvest.

This product is toxic to fish and wildlife. Keep out of lakes streams and ponds.

SYMPTOMS OF POISONING — A sense of "tightness" in chest. Stomach pains. Vomiting and diarrhea.

ANTIDOTE - INTERNAL — If swallowed. Give a tablespoonful of salt in a glass of warm water and repeat until vomit fluid is clear. Have victim lie down and keep quiet. Call a physician immediately.

ANTIDOTE - EXTERNAL — If on skin. In case of contact remove contaminated clothing and immediately wash skin with soap and water.

NOTE TO PHYSICIAN — Compound exerts muscarine-like effects - i. e., stimulation of the parasympathetic nervous system. A parasympathetic depressant, such as atropine is indicated to relieve symptoms. The administration of oxygen is helpful.

USDA Reg. No. 9779-

ACCEPTED WITH COMMENTS