



OFFICE OF CHEMICAL SAFETY AND POLLUTION PREVENTION

WASHINGTON, D.C. 20460

January 23, 2024

Dana M. Thomas
Sr. Director Regulatory
Chemsico, A Div. Of United Industries Corp.
P.O. Box 142642
St. Louis, MO 63114

Subject: Notification per PRN 98-10 – Revision of marketing claims
Product Name: Chemsico Home Insect Control 25G
EPA Registration Number: 9688-298
Application Date: 01/08/2024
Case Number: 495833

Dear Ms. Thomas:

The Agency is in receipt of your Application for Pesticide Notification under Pesticide Registration Notice (PRN) 98-10 for the above referenced product. The Registration Division (RD) has conducted a review of this request for its applicability under PRN 98-10 and finds that the action requested falls within the scope of PRN 98-10.

The label submitted with the application has been stamped “NOTIFICATION” and placed in our records.

Should you wish to add/retain a reference to the company’s website on your label, then please be aware that the website becomes labeling under the Federal Insecticide, Fungicide, and Rodenticide Act (FIFRA) and is subject to review by the Agency. If the website is false or misleading, the product would be misbranded and unlawful to sell or distribute under FIFRA section 12(a)(1)(E). 40 CFR 156.10(a)(5) lists examples of statements EPA may consider false or misleading. In addition, regardless of whether a website is referenced on your product’s label, claims made on the website may not substantially differ from those claims approved through the registration process. Therefore, should the Agency find or if it is brought to our attention that a website contains false or misleading statements or claims substantially differing from the EPA approved registration, the website will be referred to the EPA’s Office of Enforcement and Compliance.

If you have any questions, please contact Jamey Shuler by phone at (202) 566-2898, or via email at Shuler.Jamey@epa.gov.

Sincerely,

A handwritten signature in black ink, appearing to read "Jamey Shuler", is centered on a light gray rectangular background.

Jamey Shuler, Risk Manager 03
Invertebrate & Vertebrate Branch 1
Registration Division (7505P)
Office of Pesticide Programs

Chemsico Home Insect Control 25G

(Please see back page for optional marketing claims and language)

NOTIFICATION

9688-298

The applicant has certified that no changes, other than those reported to the Agency have been made to the labeling. The Agency acknowledges this notification by letter dated:

01/23/2024

Active Ingredient:

Gamma-Cyhalothrin0.025%
Other Ingredients 99.975%

KEEP OUT OF REACH OF CHILDREN

CAUTION See side for additional precautionary statements.

Net Contents: [1 qt (32 fl oz/ 946 mL)] [0.5 gal (2qt/ 64 fl oz/ 1.8L)] [1 Gallon (128 fl oz/ 3.7L)] [1.3 gal. (168 fl oz/ 4.9L)] [1.33 gal (170 fl oz/ 5.0 L)]

[OPERATING INSTRUCTIONS FOR EZ SPRAY™][AccuShot Sprayer] {Option A}

1. Shake well before each use
2. Remove sprayer from side holder. [Unwrap the tubing] [Gently pull tubing out].
3. Remove seal from top of cap. Unplug cap.
4. Securely snap the [green] plug into hole on cap.
5. Remove plastic tab near [top] [bottom] of sprayer to activate batteries.
6. Twist nozzle to adjust spray from CLOSE to SPRAY or STREAM.
7. [When priming the sprayer, hold sprayer level to the ground. Sprayer may not prime if it is held at an angle. Once primed, it will spray in any direction.

[OPERATING INSTRUCTIONS FOR AccuShot Sprayer] {Option B}

1. Remove cap and replace with reusable AccuShot Sprayer. Make sure sprayer cap is tightly closed before use
2. Shake well before each use.
3. Twist nozzle to adjust spray from CLOSE to SPRAY or STREAM.
4. [When priming the sprayer, hold sprayer level to the ground. Sprayer may not prime if it is held at an angle. Once primed, it will spray in any direction.

[Directions for EzSpray™ Sprayer and AccuShot™ Sprayer with Snap Adapt Cap] {Option B1}

[Optional Subheading: How to Use [AccuShot Sprayer™] [Alternate: EzSpray™]]

1. Shake well before each use
2. [Unwrap sprayer.] Remove sprayer from side holder [Alternate: holster]. [Unwrap the tubing] [Gently pull tubing out].
3. Open flip top closure
4. Securely snap the hose plug into opening in cap until it snaps into place.
5. Slide switch on hose plug counter-clockwise to "OPEN"
6. Remove plastic tab near [top] [bottom] of sprayer to activate batteries.
7. Twist nozzle to adjust spray from CLOSE to SPRAY or STREAM.
8. [When priming the sprayer, hold sprayer level to the ground. Squeeze and hold trigger until liquid comes out the nozzle. Sprayer may not prime if it is held at an angle. Once primed, it will spray in any direction.

[AccuShot Sprayer Directions with Snap Adapt Cap] {OPTION B2 – Alternate to B1}

1. Remove cap and replace with reusable AccuShot cap and Sprayer. Make sure sprayer cap is tightly closed before use
2. Shake well before each use.
3. Twist nozzle to adjust spray from CLOSE to SPRAY or STREAM.
4. Slide switch on hose plug counter-clockwise to "OPEN"
5. [When priming the sprayer, hold sprayer level to the ground. Sprayer may not prime if it is held at an angle. Once primed, it will spray in any direction.

[Optional Subheading: How To Use the AccuShot™ Sprayer [Alternate: EzSpray™]] (For use with Snap Adapt Cap version of Directions)

[Bracketed Text] = Optional Language {Braced Text = Note to Reviewer}

- Shake well before each use.
- Aim toward target [site] [area to be treated], and away from people and pets.
- [To improve accuracy, use slider to extend wand.][Use slider to extend wand and to improve accuracy.]
- Press the trigger to spray.
- Release the trigger to stop spray.

After use: 1. Twist sprayer nozzle completely to CLOSE position. 2. Turn hose plug switch clockwise to "CLOSED". 3. Secure sprayer upright [tip down] in [holster] [holder]. 4. **Failure to adjust nozzle completely to CLOSE position and properly secure sprayer in [holster] [holder] may result in leakage and damage to property or injury to people or animals.**

[Keep reusable AccuShot sprayer for use with Chemsico Home Insect Control 25G]

HOW TO USE THE EZ SPRAY™[AccuShot Sprayer]

- Shake well before each use.
- Aim toward target [site] [area to be treated], and away from people and pets.
- [To improve accuracy, use slider to extend wand.][Use slider to extend wand and to improve accuracy.]
- Press the trigger to spray.
- Release the trigger to stop spray.

After use: 1. Twist nozzle completely to CLOSE position. 2. Secure sprayer [upright] [tip down] in [holster] [holder]. 3. **Failure to adjust nozzle completely to CLOSE position and properly secure sprayer in [holster] [holder] may result in leakage and damage to property or injury to people or animals.**

[Keep reusable AccuShot sprayer for use with Chemsico Home Insect Control 25G]

To replace batteries: 1. [Slide battery compartment door to unlatch and open.] [Push release button near nozzle and lift up on battery hatch.] [Use screwdriver to open battery compartment] 2. Remove used batteries and insert [four] [two] new AA batteries **in correct positions** as marked per diagram inside of battery compartment. Never insert the positive end where the negative end belongs and vice versa. **Always** use a complete set of new batteries of the same type when replacing batteries. **Never** mix alkaline, carbon-zinc or rechargeable batteries. 3. Securely close battery compartment door. 4. **Always** follow manufacturer's recommendations for use and disposal of batteries.

Additional Operating Notes: • Do not submerge in water. • Before each use, inspect sprayer carefully, making sure hose is flexible and not kinked, worn or cracked, and that all connections are tight. • When storing sprayer for prolonged periods, remove batteries.

{ Directions for Easy Action Pump - Option A }

[EASY ACTION PUMP [SPRAYER] Directions] [HOW TO USE THE

EASY ACTION PUMP [SPRAYER]

- [1. For the initial use, remove the tie that is securing the handle to the base of the pump.
- REMOVE THE WAND** from the holster and **PULL THE HOSE** from the storage compartment.
- Make sure the sprayer wand is securely tightened to the spray handle.
- Shake well before each use.
- TURN THE PUMP HANDLE CLOCKWISE** to tightly seal the pump to the bottle and unlock the pump handle for pumping.
- RAISE THE PUMP HANDLE FROM THE BOTTLE AND PUMP** until you begin to feel resistance.
- Secure the pump handle for carrying by pushing the handle into the base of the pump and turn the handle counterclockwise one quarter-turn to lock.
- BEGIN SPRAYING** by pushing down on the spray handle trigger.
- ROTATE THE NOZZLE AT THE TIP** of the wand to adjust the spray from a direct spray to a broadcast mist.
- For continuous spray, push the trigger down and slide it forward to lock. **SLIDE THE TRIGGER BACK TO RELEASE** it from the lock position.

Note: If sprayer does not function properly, remove nozzle cover and check nozzle and holes in rubber component for obstructions. Replace nozzle cover and use as instructed above.]

{ Directions for Easy Action Pump - Option B }

[EASY ACTION PUMP [SPRAYER] Directions] [HOW TO USE THE EASY ACTION PUMP [SPRAYER]

- For the initial use, remove the tie from the handle and the base of the pump.
- REMOVE THE WAND** from the holster and **PULL THE HOSE** from the storage compartment.
- TURN THE PUMP COLLAR CLOCKWISE** to make sure the pump is tightly sealed on the bottle.
- Shake well before each use.
- TURN THE PUMP HANDLE COUNTERCLOCKWISE** one-eighth turn to release the handle.
- Raise the pump handle from the bottle and pump until you begin to feel resistance (10-20 pumps).
- When you begin to feel resistance, push the pump handle into the base of the pump and turn the handle clockwise one-eighth turn to secure it for carrying.
- Once the pump handle is secured **BEGIN SPRAYING** by pushing down on the spray handle trigger.
- ROTATE THE NOZZLE AT THE TIP** of the wand to adjust the spray from a direct spray to a broadcast mist.

Note: If sprayer does not function properly, remove nozzle cover and check nozzle and holes in rubber component for obstructions. Replace nozzle cover and use as instructed above.

STOP. READ ENTIRE LABEL BEFORE USE.**DIRECTIONS FOR USE**

It is a violation of Federal law to use this product in a manner inconsistent with its labeling. *For use around the home only. Do not use on pets.*



People and pets should not be allowed in treated areas until spray has dried.

- Do not water the treated area to the point of runoff.
- Do not make applications during rain.
- All outdoor applications must be limited to spot or crack-and-crevice treatments only, except for the following permitted uses:
 1. Treatment to soil or vegetation around structures
 2. Applications to lawns, turf and other vegetation
 3. Applications to building foundations, up to a maximum height of 3 ft. Other than applications to building foundations, all outdoor applications to impervious surfaces such as sidewalks, driveways, patios, porches and structural surfaces (such as windows, doors and eaves) are limited to spot and crack-and-crevice applications only.
- Application is prohibited directly into sewers or drains, or to any area like a gutter where drainage to sewers, storm drains, water bodies or aquatic habitat can occur. Do not allow the product to enter any drain during or after application.

[SHAKE WELL BEFORE USING]**[SPRAYER INSTRUCTIONS]**

[How to prime and care for your sprayer:]

1. After shaking product well, remove cap from container and replace with sprayer hose and cap assembly. Tighten securely.
2. Turn sprayer nozzle one half-turn counterclockwise. Hold sprayer below the level of container and prime by pumping trigger 10 to 15 times until product is dispensed. Adjust nozzle to fine spray or jet stream as needed.
3. To store, turn nozzle to "OFF" position and [store with sprayer above level of liquid in container to prevent leakage] [store sprayer on hook located near bottle handle to prevent leakage].
4. Avoid contamination of food, feedstuffs and domestic water supplies. All food-processing surfaces and utensils should be covered during treatment or thoroughly washed before use. Remove pets and birds and cover fish aquariums before spraying.

{OPTIONAL} [DIRECTIONS FOR TRIGGER SPRAYER PRODUCT]**HOW TO USE**

1. Shake well before each use.
2. Adjust nozzle to narrow fan spray, to prevent excessive wetting and waste of product. Spray just enough to cover area to be treated.
3. Avoid contamination of food, feedstuffs and domestic water supplies. All food-

processing surfaces and utensils should be covered during treatment or thoroughly washed before use. Remove pets and birds and cover fish aquariums before spraying.

{OPTIONAL} [DIRECTIONS FOR NESTED SPRAYER APPLICATOR]**HOW TO USE**

1. Shake well before each use.
2. Pull tab outward.
3. Rotate lock ring counterclockwise to unlock.
4. Pull sprayer to uncoil tubing.
5. Turn sprayer nozzle one half-turn counterclockwise. Hold sprayer below the level of container and prime by pumping trigger 10 to 15 times until product is dispensed. Adjust nozzle to fine spray or jet stream as needed.
6. To store, turn nozzle to "OFF" position and return sprayer to bottle opening.
7. Drape tubing through slot in the spray handle.
8. Turn lock ring clockwise to lock.
9. Avoid contamination of food, feedstuffs and domestic water supplies. All food-processing surfaces and utensils should be covered during treatment or thoroughly washed before use. Remove pets and birds and cover fish aquariums before spraying.

{OPTIONAL} [DIRECTIONS FOR CAPTIVE SPRAYER PRODUCT]**HOW TO USE****BEFORE USE:**

1. Shake well before each use.
2. Peel sticker from flip-top cap and open cap. Discard sticker.
3. Remove sprayer from its slot beneath the bottle handle and remove and discard plastic wrap. Pull black hose tip to completely extend tubing.
4. Firmly press black hose tip into opening in cap until it snaps into place.
5. Hold sprayer below the level of the container and prime by pumping trigger several times until product is dispensed.
6. Adjust nozzle to desired setting.

AFTER USE:

7. To store, turn sprayer nozzle off.
8. DO NOT disconnect hose.
9. Return sprayer to its slot. Hose can be pushed back into sprayer handle.

{OPTIONAL} [DIRECTIONS FOR CAPTIVE SPRAYER PRODUCT with Snap Adapt Cap]**HOW TO USE****BEFORE USE:**

1. Shake well before each use.
2. Peel sticker from flip-top cap and open cap. Discard sticker.
3. Remove sprayer from its slot beneath the bottle handle and remove and discard plastic wrap. Pull black hose tip to completely extend tubing.
4. Securely snap the hose plug into opening in cap until it snaps into place.
5. Slide switch on hose plug counter-clockwise to "OPEN"
6. Hold sprayer below the level of the container and prime by pumping trigger

[Bracketed Text] = Optional Language {Braced Text = Note to Reviewer}

- several times until product is dispensed.
- Adjust nozzle to desired setting.

AFTER USE:

- To store, turn sprayer nozzle off.
- DO NOT disconnect hose.
- Return sprayer to its slot. Hose can be pushed back into sprayer handle.

[AUTO TRIGGER [SPRAYER] DIRECTIONS] {OPTION 1}

- Shake well before use.
- Remove plastic tab near top of sprayer to activate batteries
- Twist nozzle to adjust spray from CLOSE to SPRAY or STREAM
- [Press the trigger to spray]. Spray just enough to cover area to be treated. Avoid contamination of food, feedstuffs and domestic water supplies. All food-processing surfaces and utensils should be covered during treatment or thoroughly washed before use. Remove pets and birds and cover fish aquariums before spraying.
- Release the trigger to stop spray.

Keep the reusable auto trigger [sprayer] for use on compatible refills.

[DIRECTIONS FOR **NAME SPRAYER PRODUCT] {OPTION 2}**

For Initial Use Only: Remove Battery Isolation Strip [from] [beneath] sprayer and discard.

HOW TO USE

BEFORE USE:

- Shake well before each use.
- [Flip] [Rotate] [Raise] the [nozzle extension] [wand] up to the ["Ready to Use"] [spray] position.
- Rotate nozzle from ["Off"] ["X"] position to [desired [spray]] position.
- Slide the [[lock [switch] [button]] [towards [trigger] [button]] [down] to the [unlocked] [open] [spray] position.
- [Grab bottle and let arm hang naturally.] Press button down to spray.

AFTER USE:

- [When] [Once] spraying is completed, slide the [[lock [switch] [button]] [away from [trigger] [button]] [up] to the [locked] [closed] position.
- Rotate nozzle to ["Off"] ["X"] position and [flip] [rotate] the [nozzle extension] [wand] down to storage position.

To replace batteries: While the lock is in the [locked] [closed] position, rotate sprayer counterclockwise and [lift] [pull up] on the sprayer. [Push] [Press] battery door tab and pull to [open] [remove] battery door. Insert and align new batteries to correct "+" and "-" designations as shown near the battery door. [Close] [Replace] battery door. Replace the sprayer on the bottle in the same position it was removed from, matching the arrows on the front of the sprayer and bottle. Rotate sprayer clockwise until the sprayer lines up with the front of the bottle.

[Keep reusable **NAME sprayer for use with Chemsico Home Insect Control 25G]**

[DIRECTIONS FOR **NAME SPRAYER PRODUCT] {OPTION 3}**

For Initial Use Only: Remove Battery Isolation Strip [from] [beneath] sprayer and discard.

HOW TO USE

BEFORE USE:

- Shake well before each use.
- [Flip] [Rotate] [Raise] the [nozzle extension] [wand] up to the ["Ready to Use"] [spray] position.
- Rotate nozzle from ["Off"] ["X"] position to [desired [spray]] position.
- Slide the [[lock [switch] [button]] [away from [trigger] [button]] [up] to the [unlocked] [open] [spray] position.
- [Grab bottle and let arm hang naturally.] Press button down to spray.

AFTER USE:

- [When] [Once] spraying is completed, slide the [[lock [switch] [button]] [towards [trigger] [button]] [down] to the [locked] [closed] position.
- Rotate nozzle to ["Off"] ["X"] position and [flip] [rotate] the [nozzle extension] [wand] down to storage position.

To replace batteries: While the lock is in the [locked] [closed] position, rotate sprayer counterclockwise and [lift] [pull up] on the sprayer. [Push] [Press] battery door tab and pull to [open] [remove] battery door. Insert and align new batteries to correct "+" and "-" designations as shown near the battery door. [Close] [Replace] battery door. Replace the sprayer on the bottle in the same position it was removed from, matching the arrows on the front of the sprayer and bottle. Rotate sprayer clockwise until the sprayer lines up with the front of the bottle.

[Keep reusable **NAME sprayer for use with Chemsico Home Insect Control 25G]**

INDOORS.)

Spray areas where **cockroaches, palmetto bugs, ants*, clover mites, crickets, cigarette beetles, confused flour beetles, red flour beetles, rice weevils, saw-toothed grain beetles, dermestid beetles, firebrats, water bugs, silverfish, earwigs, box elder bugs, centipedes, millipedes, stink bugs, pillbugs, sowbugs, scorpions and spiders** are found or normally occur, including dark corners of rooms and closets; cracks and crevices in walls; along and behind baseboards; beneath and behind sinks, stoves, refrigerators and cabinets; and around plumbing and other utility installations. **Pillbugs, sowbugs, scorpions and spiders** must be sprayed directly to be killed.

For ants*, apply to ant trails, around doors and windows and wherever else ants may find entrance.

* Argentine, southern, field, Allegheny mound, Florida carpenter, black carpenter, cornfield, honey, pavement, nuisance, harvester

[Bracketed Text] = Optional Language {Braced Text = Note to Reviewer}

For control of carpet beetles, thoroughly spray along baseboards and edges of carpeting; under carpeting, rugs and furniture; in closets and on shelving; and areas where carpet beetles are seen or suspected.

For control of fleas and brown dog ticks, thoroughly spray pet beds, resting quarters, nearby cracks and crevices, along and behind baseboards, window and door frames and localized areas of floor and floor covering where fleas and ticks may be present. Pet bedding should be replaced with clean, fresh bedding after treating the area. **Do not treat pets with this product.** To control the source of flea infestations, treat pets with a product registered for application to animals.

Note: Test inconspicuous sample of fabric or rug for staining before use. Check carpet manufacturer's warranty and care and maintenance information before using product on your specific brand of carpeting.

OUTDOORS

Bees, wasps, box elder bugs, centipedes, millipedes, pillbugs, sowbugs, scorpions, spiders, flies, Asian beetles, stink bugs and mosquitoes: For use only as an aid in reducing annoyance from these insects. Spray outside surfaces of screens, doors, window frames or wherever insects may enter the room. Also spray surfaces around light fixtures, on porches, in garages and other places where insects alight [land] or congregate. **Pillbugs, sowbugs, scorpions and spiders** must be sprayed directly to be killed.

Ants*, ticks (including ticks which transmit Lyme disease), crickets, fleas and earwigs: For treatment of infestation of these insects in areas where there are weeds or bushy non-crop areas, spray infested areas thoroughly. When treating for ticks, give special attention to areas frequented by pets. For ants, thoroughly wet hills and runways.

* Argentine, southern, field, Allegheny mound, Florida carpenter, black carpenter, cornfield, honey, pavement, nuisance, harvester

[FOUNDATION] [PERIMETER] [BARRIER] TREATMENT

Apply a continuous band of insecticide around building foundation and around windows, doors, utility line entrances, eaves, vents and other areas to reduce the potential for entry by crawling pests. Remove debris and leaf litter from next to the foundation, cut back vegetation and branches that touch the foundation, and move or rake back rocks, deep mulch or other potential pest harborage next to the foundation.

Apply the band up to 3 ft wide around the structure and upwards along the foundation to 3 ft and around windows, doors and roof overhangs. Apply as a coarse spray to thoroughly and uniformly wet the foundation and/or band area so that the insecticide will reach the soil or thatch level where pests may be active. One gallon will cover 800 sq ft [1.3 gallons will cover 1,050 sq ft.] [One quart will cover 200 sqft].

WOOD DESTROYING INSECTS

Treat infested areas and areas likely to be infested: wood surfaces, voids and tunnels [channels] in damaged wood; behind veneers; in structural voids (between stud walls

and spaces between wood and foundations); along cracks; along crawl spaces; and around outside buildings, porches, wood piles, wooden fences and decks. Kills **exposed subterranean termites*, dampwood termites*, drywood termites*, carpenter ants, ambrosid beetles, death hunter beetles, false powderpost beetles and powderpost beetles.**

For Carpenter Bees

Treat active tunnels where carpenter bee activity has been observed. Leave the entrance hole open for 48 hours after application to allow the bees to contact and distribute the insecticide throughout the nest galleries. Then plug the entrance hole with a piece of wooden dowel coated with carpenter's glue or wood putty. Plugging the hole will prevent reinfestation of old nesting tunnels and reduce the chances of wood decay.

Do not use this product as the sole source of control for active, structural infestations by subterranean termites; the purpose of this application is to kill workers or winged reproductive forms of termites which are present at the time of treatment. It is not intended to provide structural pest control. It is not a substitute for mechanical alteration, soil and foundation treatment, but merely a supplement. For active, structural infestations by subterranean termites, this product can only be used to supplement a federally registered conventional product that is registered as a sole source for termite control. This product will not eliminate termite infestations or provide protection against future infestation.

REFILL DIRECTIONS

Chemsico Home Insect Control 25G can be refilled using Chemsico Insecticide Concentrate 25G. Pour the entire contents of one 12.8 fl oz bottle of Chemsico Insecticide Concentrate 25G into an empty 1 gal container of Chemsico Home Insect Control 25G. Fill to 1 gal with water, replace the lid [cap] and shake well prior to using.

REFILL DIRECTIONS FOR EZ SPRAY™

Refill only with Chemsico Insecticide Concentrate 25G. Remove cap. Carefully measure and pour 12.8 fl oz of concentrate into an empty 1 gal container of Chemsico Home Insect Control 25G EZ Spray, and fill to 1 gal with water. Replace and tightly close cap. Wipe off any spilled product.

{OPTIONAL} [REFILL DIRECTIONS FOR EZ SPRAY™]

Refill only with Chemsico Insecticide Concentrate 25G. Remove cap. Carefully measure and pour 17 fl oz of concentrate into an empty 1.3 gal container of Chemsico Home Insect Control 25G EZ Spray, and fill with water to 1.3 gal. Replace and tightly close cap. Wipe off any spilled product.

STORAGE AND DISPOSAL [FOR EZ SPRAY™]

Pesticide Storage: Turn the nozzle to “CLOSE” position. To prevent leakage, attach sprayer to clip. Store this product only in its original container in a secure storage area away from sources of heat or open flame and in an area inaccessible to children and pets. Keep from freezing. **Pesticide Disposal:** Nonrefillable container. Do not reuse or refill this container unless the directions for use allow a different (concentrated) product to be diluted in the container. **If empty:** Place in trash or offer for recycling if available. **If partly filled:** Call your local solid waste agency for disposal instructions. Never place unused product down any indoor or outdoor drain.

STORAGE AND DISPOSAL [FOR AccuShot Sprayer]

Pesticide Storage: Turn the nozzle to “CLOSE” position. To prevent leakage, attach sprayer to clip. Store this product only in its original container in a secure storage area away from sources of heat or open flame and in an area inaccessible to children and pets. Keep from freezing. **Pesticide Disposal:** Do not discard the AccuShot Sprayer. Keep the AccuShot Sprayer for use on Chemsico Home Insect Control 25G Nonrefillable container. Do not reuse or refill this container unless the directions for use allow a different (concentrated) product to be diluted in the container. **If empty:** Place in trash or offer for recycling if available. **If partly filled:** Call your local solid waste agency for disposal instructions. Never place unused product down any indoor or outdoor drain.

STORAGE AND DISPOSAL

Pesticide Storage: Store in cool dry area away from heat or open flame. **Pesticide Disposal:** Nonrefillable container. Do not reuse or refill this container unless the directions for use allow a different (concentrated) product to be diluted in the container. **If empty:** Place in trash or offer for recycling if available. **If partly filled:** Call your local solid waste agency for disposal instructions. Never place unused product down any indoor or outdoor drain.

{For use with Option A}

STORAGE AND DISPOSAL (EASY ACTION PUMP [SPRAYER])

Pesticide Storage: Slowly turn the pump handle counterclockwise to loosen the pump mechanism from the bottle to release pressure. Turn the handle back clockwise to seal the unit for storage. Turn the handle counterclockwise one quarter-turn to lock the handle. Push the hose back into the storage compartment. Place the wand back in the holster. Store this product in its original container in a secure storage area. **Pesticide Disposal: If empty:** Nonrefillable container. Do not reuse or refill this container unless the directions for use allow a different (concentrated) product to be diluted in the container. Place in trash or offer for recycling if available. **If partly filled:** Call your local solid waste agency for disposal instructions. Never place unused product down any indoor or outdoor drain.

{For use with Option B}

STORAGE AND DISPOSAL [EASY ACTION PUMP [SPRAYER]]

Pesticide Storage: Slowly turn the pump collar counterclockwise to loosen the seal and release pressure. Turn the collar back clockwise to retighten the seal. Push the hose back into the storage compartment. Place the wand back in the holster. Store this product in its original container in a secure storage area. **Pesticide Disposal: If empty:** Nonrefillable container. Do not reuse or refill this container unless the directions for use allow a different (concentrated) product to be diluted in the container. Place in trash or offer for recycling if available. **If partly filled:** Call your local solid waste agency for disposal instructions. Never place unused product down any indoor or outdoor drain.

STORAGE AND DISPOSAL {For use with Auto Trigger Sprayer}

Pesticide Storage: Store in original container in a cool, dry area away from heat or open flame and in an area inaccessible to children and pets. Keep from freezing. **Pesticide Disposal: Reusable Auto Trigger [Sprayer]:** Do not discard. Keep the Auto Trigger [Sprayer] for use on Chemsico Home Insect Control 25G. **If Empty:** Non-refillable container. Do not reuse or refill this container. Place in trash or offer for recycling if available. **If partly filled:** Call your local solid waste agency for disposal instructions. Never place unused product down any indoor or outdoor drain.

STORAGE AND DISPOSAL {For use with **NAME Sprayer}**

Pesticide Storage: Turn the nozzle to “CLOSE” position. To prevent leakage, and [flip] [rotate] the [nozzle extension] [wand] down to storage position. Store this product only in its original container in a secure storage area away from sources of heat or open flame and in an area inaccessible to children and pets. Keep from freezing. **Pesticide Disposal:** Do not discard the **NAME** Sprayer. Keep the **NAME** Sprayer for use on Chemsico Home Insect Control 25G Nonrefillable container. Do not reuse or refill this container unless the directions for use allow a different (concentrated) product to be diluted in the container. **If empty:** Place in trash or offer for recycling if available. **If partly filled:** Call your local solid waste agency for disposal instructions. Never place unused product down any indoor or outdoor drain.

PRECAUTIONARY STATEMENTS**Hazards to Humans and Domestic Animals**

CAUTION. Harmful if absorbed through skin. Avoid contact with skin, eyes or clothing. Wash hands thoroughly with soap and water after handling and before eating, drinking, chewing gum, or using tobacco. Remove and wash contaminated clothing before reuse.

First Aid

If on Skin or Clothing: Take off contaminated clothing. Rinse skin immediately with plenty of water for 15-20 minutes. Call a Poison Control Center or doctor for treatment advice.

Have the product container or label with you when calling a Poison Control Center or doctor or going for treatment.

Environmental Hazards

This product is toxic to fish and other aquatic organisms. To protect the environment, do not allow pesticide to enter or run off into storm drains, drainage ditches, gutters or surface waters. Applying this product in calm weather when rain is not predicted for the next 24 hours will help to ensure that wind or rain does not blow or wash pesticide off the treatment area.

NOTICE: To the extent consistent with applicable law, buyer assumes all responsibility for safety and use not in accordance with directions.



[**Questions or comments?** Call toll free 1-800-332-5553.] []

[**If you are not satisfied with this product for any reason, send your written request for a refund to the address below, together with the original dated store receipt showing the price you paid. Please allow 6-8 weeks for processing.]

Made in the USA for Chemsico
Division of United Industries Corporation
PO Box 142642
St. Louis, MO 63114-0642

EPA Reg. No: 9688-298
EPA Est. No. 9688-MO-1 © 2021

{OPTIONAL MARKETING STATEMENTS AND GRAPHICS}**{Spanish translation of text may be included on marketed label}****{General Treatment Claims}**

1. [Tailored to] [[target] [treat]] baseboards
2. [new] [**NAME** [Sprayer]] [is][Ideal] [Made] [Designed] for treating [baseboards] [around windows] [door thresholds] [and other hard to reach areas] {"New" reference to be used only for a 6 month duration after introduction into the marketplace}
3. [Accurate] [Precise] spray for insect control
4. Indoor + [plus] [Home] Perimeter [Insect] Treatment[Control]
5. Indoor + [plus] [Home] Barrier [Insect] Treatment[Control]
6. Indoor + [Home] Foundation [Insect] Treatment[Control]
7. Control listed insects inside the house and around the perimeter
8. Use Indoors and as an Outdoor Foundation Treatment
9. Indoor & Foundation [Barrier] [Perimeter] Treatment in One!
10. For use around foundations, outside buildings, porches, wood piles, wooden fences, and decks
11. For Use Around Foundations, Porches, Wood Fences & Decks
12. Use indoors and outdoors



13.

WHERE TO USE:

INDOORS: In cracks and crevices, along baseboards, under sinks, behind stoves and refrigerators, and anywhere insects may hide.



OUTDOORS: Outside surfaces of screens, doors and window frames; porches; patios; buildings or wherever insects may enter.

14.

{General Efficacy Claims}

15. Kills [controls] roaches
16. Kills fleas
17. Kills both adult and pre-adult (larvae) fleas
18. Kills fleas and their hatching eggs
19. Kills ticks (including ticks which may transmit Lyme disease)
20. Helps protect your home from invading ants
21. Also stops spiders, roaches, fleas, and ticks
22. Kills Carpenter Ants & other listed ant species
23. Kills Ants [on Contact]
24. Kills carpenter bees [on contact]
25. Kills Wood-Destroying Insects on Contact
26. Kills on Contact



- 27. Kills ticks on contact
- 28. Kills [even] hidden bugs
- 29. Kills the bugs you see and kills the bugs you don't see
- 30. Kills roaches, ants and spiders
- 31. Kills roaches, fleas, and ticks
- 32. Kills [controls] ants, roaches, spiders, fleas and ticks
- 33. Kills home invading pests [insects]

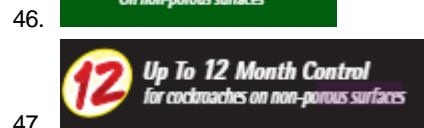


- 34. Kills [controls] up to 40 [types of] insects [indoors & outdoors]
- 35. [Also] Kills Stink Bugs



{Residual Efficacy Claims}

- 38. Up to 9 Months of Indoor Control
- 39. Up to 9 Months of Control Indoors
- 40. Indoor Protection [for] up to 9 Months
- 41. Indoor Control [for] up to 9 Months
- 42. Controls Roaches, Ants, Crickets and Silverfish Indoors [for] up to 9 Months
- 43. Up to 9 Month Control
- 44. Up to 12 Month* [52 weeks] Control for Cockroaches
- 45. Controls Cockroaches for 12 months*



{Formula/Package Claims}

- 48. [new] [**NAME** [Sprayer]] [is] Designed for small spaces {“New” reference to be used only for a 6 month duration after introduction into the marketplace}
- 49. Designed for [your] accuracy
- 50. [new] [**NAME** [Sprayer]] [features a] [built with] lightweight [bottle] [design] {“New” reference to be used only for a 6 month duration after introduction into the marketplace}
- 51. [Balanced] [Intuitive] [Modern] [Sleek] design
- 52. [new] [**NAME** [Sprayer]] [features a] slim bottle [profile] [for convenient storage] {“New” reference to be used only for a 6 month duration after introduction into the marketplace}
- 53. Ready-to-use



54.



55.



- 56. Economical do-it-yourself pest control
- 57. Do-it-yourself pest control
- 58. Easy to use ready spray
- 59. Clear Formula
- 60. Clear Formula – Non-staining, No Lingerin odor
- 61. Non-Staining Clear Formula
- 62. Indoor & Outdoor Insect Killer
- 63. No lingering odor
- 64. No Lingerin Odor Clear Formula
- 65. Leaves no lingering odor
- 66.



{graphic for “no lingering odor” claims}

67. No oily residue



- 68. Unscented
- 69. Non-Staining
- 70. Water-based



- 71.
- 72. Water-based (Non-staining, [Leaves] no lingering odor)
- 73. Non-staining formula that leaves no lingering odor
- 74. **[Guaranteed] [Results] [or your] [money back]



- 75.
- 76.



{Sprayer Related Claims}

- 77. [new] **[**NAME**]** [Sprayer] [has] [3] [different] spray patterns [for multiple applications] [for precise treatments] [ideal for indoor/outdoor use] *{“New” reference to be used only for a 6 month duration after introduction into the marketplace}*
- 78. [Accurate] [continuous] spray [technology]
- 79. [new] **[**NAME**]** [Sprayer] [features an] Accurate nozzle [and] [extension] [wand] *{“New” reference to be used only for a 6 month duration after introduction into the marketplace}*
- 80. All-in-one [battery] [power] [powered] sprayer
- 81. [Contains] [Includes] AA Batteries
- 82. Replaceable batteries
- 83. [new] **[**NAME**]** [Sprayer] [with] continuous [Power] Sprayer [Technology] *{“New” reference to be used only for a 6 month duration after introduction into the marketplace}*
- 84. [new] **[**NAME**]** [Sprayer] [is] [[Designed] [ideal] [perfect]] for [small area(s)] [spot treatment] *{“New” reference to be used only for a 6 month duration after introduction into the marketplace}*
- 85. [new] **[**NAME**]** [Sprayer] [featuring an] [Easy] [simple] [precise] pivot [extension] [wand] *{“New” reference to be used only for a 6 month duration after introduction into the marketplace}*
- 86. [new] **[**NAME**]** [Sprayer] [is] easy to maneuver [in] [to] [under] [hard to reach places] *{“New” reference to be used only for a 6 month duration after introduction into the marketplace}*
- 87. Sprays in hard to reach places
- 88. [Extended] [powerful] spray
- 89. [new] **[**NAME**]** [Sprayer] [with] Flip and go [spray] [sprayer] *{“New” reference to be used only for a 6 month duration after introduction into the marketplace}*
- 90. [Just] [[point] [aim] [flip]] and [spray] [shoot] [treat]
- 91. [[Just] [Simply]] [Flip] & [Spray]
- 92. [new] **[**NAME**]** [Sprayer] [featuring] [features] multiple spray patterns *{“New” reference to be used only for a 6 month duration after introduction into the marketplace}*
- 93. [new] **[**NAME**]** [Sprayer] [with] [power] [precision] *{“New” reference to be used only for a 6 month duration after introduction into the marketplace}*
- 94. [Precise] [precision] spray [pattern]
- 95. [new] **[**NAME**]** [Sprayer] [functions with just a] [simple] press of a button *{“New” reference to be used only for a 6 month duration after introduction into the marketplace}*
- 96. Spray with a [simple] press of a button

- 97. Reusable sprayer
- 98. EZ Spray Sprayer included
- 99. Easy Storage Sprayer
- 100. 4 AA Alkaline Batteries Included [Battery Powered EZ Spray]
- 101. EzSpray Power Action Sprayer [batteries included]
- 102. [Please Read Before Use] – When Priming, Hold sprayer Level to the Ground. If Held at an Angle, Sprayer Will not Prime
- 103. EzSpray Easy Setup
- 104. Continuous Spray
- 105. Increased Pressure for (5 [10] [X] Minute) Continuous Spray
- 106. Up to 5 [10] [X] minutes of Continuous Spray
- 107. Adjustable Spray Patterns for [Spot Application][Covers large area]
- 108. Extended Wand for Hard-to-Reach Areas
- 109. Locking Trigger Reduces Hand Fatigue
- 110. Easy Action Pump [Sprayer]
- 111. No Assembly Required]
- 112. Reusable Battery Sprayer
- 113. Battery Powered Sprayer
- 114. Reusable Auto Trigger [Sprayer]•
- 115. For Use with Reusable Auto Trigger [Sprayer]
- 116. Refill
- 117. Continuous [Adjustable] Spray [for Entire Home Protection]
- 118. Continuous [Action] Power Sprayer
- 119. Continuous Power Trigger [Spray]Press and Hold Technology
- 120. EZSpray
- 121. Comfort Power Sprayer [Trigger] Reduces[No] Hand Fatigue
- 122. No pumping [no squeezing], just press to spray
- 116. Batteries [not] included
- 117. Includes [X] AA Batteries
- 118. AccuShot
- 119. AccuShot Sprayer.
- 120. [Just] Aim & Spray.
- 121. Comfort-Power-Precision
- 122. With Extendable Wand [for improved accuracy]
- 123. With Adjustable Wand [for improved accuracy]
- 124. For use with Reusable AccuShot Sprayer



125.

OPERATING INSTRUCTIONS FOR ACCUSHOT® SPRAYER

1. Shake well before each use. 2. Remove sprayer from side holster. Uncap the tubing. Gently pull tubing out. 3. Open flip-top closers. 4. Securely snap the hose plug into opening in cap until it snaps into place. 5. Slide switch on hose plug counterclockwise to OPEN. 6. Remove plastic tab near bottom of sprayer to activate batteries. 7. Twist nozzle to adjust spray from CLOSE **X** to SPRAY **S** or STREAM **S**. 8. When priming the sprayer, hold sprayer level to the ground. Squeeze and hold trigger until liquid comes out the nozzle. Sprayer may not prime if it is held at an angle. Once primed, it will spray in any direction.

126.

INSTRUCTIONS FOR REUSABLE ACCUSHOT® SPRAYER

1. Remove cap and replace with reusable AccuShot cap and sprayer. Make sure sprayer cap is tightly closed before use. 2. Shake well before each use. 3. Twist nozzle to adjust spray from CLOSE **X** to SPRAY **S** or STREAM **S**. 4. Slide switch on hose plug counterclockwise to OPEN. 5. When priming the sprayer, hold sprayer level to the ground. Sprayer may not prime if it is held at an angle. Once primed, it will spray in any direction.

127.



128.



129.



130.



131.

[Bracketed Text] = Optional Language

{Braced Text = Note to Reviewer}

{Storage Claims}

- 132.new [**NAME** [Sprayer]] Bottle fits [[on] [in] [under]] [[cabinets] [shelves] [under sinks]] [with ease] {"New" reference to be used only for a 6 month duration after introduction into the marketplace}
- 133.[**NAME** [Sprayer]] [for] convenient Storage 126.Easy [to store] [store] [Storage] [bottle]
- 134.new [**NAME** [Sprayer]] [is designed to] Fit[s] on most shelves [in small storage areas] {"New" reference to be used only for a 6 month duration after introduction into the marketplace}
- 135.Lock button prevents [[drips] [spills] [leaks]] in storage
- 136.[new] [**NAME** [Sprayer]] [with a] locking trigger prevents [[drips] [leaks] [spills]] [in storage] {"New" reference to be used only for a 6 month duration after introduction into the marketplace}

{Usage Claims}

- 137.[1] [One] [Single]] Hand [usage] [design] [grip] 131.[1] [One] [Single]] hand spraying [operation]
- 138.[new] [**NAME** [Sprayer]] [design] has [single hand [usage] [operation] allowing you to keep [1] [one] hand free for ability to easily move away [curtains] [rugs] [furniture] [or other items] {"New" reference to be used only for a 6 month duration after introduction into the marketplace}
- 139.Comfort grip [design] [handle]
- 140.[**NAME** [Sprayer]] [features] Comfort & Accuracy [[all] in one] 135.[convenient] [easy to grab] [handle] [fits] [for] all hand sizes 136.[Easy] balance grip
- 141.[new] [**NAME** [Sprayer]] [features] [with] [Easy] [little] [no] set-up {"New" reference to be used only for a 6 month duration after introduction into the marketplace}
- 142.Easy [to] grab [handle] [design]
- 143.[Easy] [Simple] to [hold] [use]
- 144.Grab and go
- 145.No bending [over] required 142.Easy control [with one hand]
- 146.[new] [**NAME** [Sprayer]] [is] designed for [your] [comfort] [balance] [comfort & balance] {"New" reference to be used only for a 6 month duration after introduction into the marketplace}

*on non-porous surfaces

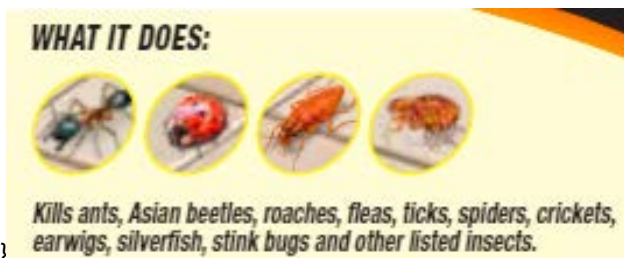
{Note to Reviewer: The word "new" will only remain on the label for up to 6 months after being introduced into the market}

{OPTIONAL MARKETING LANGUAGE}

[Kills both adult and pre-adult (larvae) fleas for up to 8 weeks [2 months] • Kills fleas and their hatching eggs • Breaks the flea life cycle • Keeps killing • Keeps on killing • Protects for up to [36 weeks] 9 months indoors • Lasts up to [36 weeks] 9 months Indoors • Up to 9 month Indoor Control]

[Chemsico Home Insect Control 25G [This product] is an effective formulation, which kills roaches, ants and other crawling insects [bugs]. [Chemsico Home Insect Control 25G [This product] is specially formulated to kill bugs [pests] fast plus keeps killing up to 9 months, [36 weeks.] indoors. Chemsico Home Insect Control 25G [This product] stays on treated surfaces providing killing power for up to 9 months [36 weeks] indoors after the spray has dried. Chemsico Home Insect Control 25G also stays on treated surfaces providing insect protection for up to 9 months [36 weeks] indoors. [This product [formula] is for indoor and outdoor insect control. It leaves no odor and is non-staining.] [Chemsico Home Insect Control 25G controls cockroaches for up to 12 months [52 weeks] indoors on non-porous surfaces].

Chemsico Home Insect Control 25G is effective against roaches, ants and other listed insects and kills [controls] for up to 9 months [36 weeks] indoors. This formula is non- staining and leaves no odor. To kill [control] insects inside your home, spray Chemsico Home Insect Control 25G [this product] along baseboards in your kitchen, bathroom and other living areas. To help prevent insects from entering your home, spray outside surfaces of screens and around door and window frames.



{OPTIONAL GRAPHIC}

[Bracketed Text] = Optional Language

{Braced Text = Note to Reviewer}

{OPTIONAL PRODUCT FACT BOX}

PRODUCT FACTS

What It Does:

Kills [carpenter ants] ants, asian beetles [cockroaches] roaches, fleas, ticks, spiders, [crickets, earwigs, silverfish] and other listed insects

Where to Use:

INDOORS: In cracks and crevices, along baseboards,[under sinks, behind stoves and refrigerators and anywhere insects may hide] [wherever pests find entrance]

OUTDOORS: [On surfaces of] Outside surfaces of screens, doors and window frames, porches, patios, buildings or wherever insects may enter

Questions & Comments:

Call 1-800-332-5553 or Visit our Website at www.xxx.com