



OFFICE OF CHEMICAL SAFETY AND POLLUTION PREVENTION

WASHINGTON, D.C. 20460

March 4, 2024

Michael G. Sarli
Sr. Director Regulatory
Chemsico, A Div. Of United Industries Corp.
P.O. Box 142642
St. Louis, MO 63114

Subject: Approval of Label Amendment; Only Indicated Changes Reviewed – make minor label changes and optional marketing claims related to an optional sprayer.
Product Name: Chemsico Herbicide RTU 4A
EPA Registration Number: 9688-264
Application Date: 12/13/2021 & 12/14/2021
Case Number: 00476397 & 00480171

Dear Michael G. Sarli:

The amended label referred to above, submitted in connection with registration under the Federal Insecticide, Fungicide, and Rodenticide Act (FIFRA), as amended, is acceptable. However, EPA reviewed only the label changes highlighted, marked, or otherwise indicated on the submitted label. Any other changes to the previously approved label that were not clearly highlighted, marked, or otherwise indicated in your submission were not reviewed and may form the basis of regulatory and/or enforcement action if later discovered by the Agency. Further, submission of a label amendment application with unidentified changes may be considered a knowing submission of false information to the Agency. This approval does not affect any conditions that were previously imposed on this registration. You continue to be subject to existing conditions on your registration and any deadlines connected with them.

The label submitted with the application has been stamped "Accepted Only Indicated Revisions Reviewed" and is enclosed for your records.

This labeling supersedes all previously accepted labeling. You must submit one copy of the final printed labeling before you release the product for shipment with the new labeling. In accordance with 40 C.F.R. § 152.130(c), you may distribute or sell this product under the previously approved labeling for 18 months from the date of this letter. After 18 months, you may only distribute or sell this product if it bears this new revised labeling or subsequently approved labeling. "To distribute or sell" is defined under FIFRA section 2(gg) and its implementing regulation at 40 C.F.R. § 152.3.

Should you wish to add/retain a reference to the company's website on your label, then please be aware that the website becomes labeling under FIFRA and is subject to review by the Agency. If the website contains any false or misleading statement, design, or graphic, the product may be misbranded and unlawful to sell or distribute under FIFRA Sections 2(q)(1)(A) and 12(a)(1)(E). 40 C.F.R. § 156.10(a)(5) lists examples of statements EPA may consider false or misleading. In addition, regardless of whether a website is referenced on the product label, claims made as part of the product's sale or distribution may not substantially differ from those claims approved through the registration process under FIFRA Section 12(a)(1)(B). Therefore, should the Agency find or if it is brought to our attention that a website contains false or misleading statements or claims substantially differing from the EPA approved registration, the product will be referred to the EPA's Office of Enforcement and Compliance Assurance.

Your release for shipment of the product constitutes acceptance of these conditions. If these conditions are not complied with, the registration will be subject to cancellation in accordance with FIFRA section 6.

If you have any questions, please contact Francisco Llarena-Arias at 202-566-2816 or at llarena-arias.francisco@epa.gov.

A handwritten signature in black ink, appearing to read 'Francisco Llarena-Arias', is centered on a light blue rectangular background.

Francisco Llarena-Arias
For Lydia Crawford,
Acting Product Manager 24
Fungicide & Herbicide Branch
Registration Division (7505P)

Enclosure

Chemsico Herbicide RTU 4A

ACCEPTED
ONLY INDICATED
REVISIONS REVIEWED
03/04/2024

Under the Federal Insecticide, Fungicide and
Rodenticide Act as amended, for the pesticide
registered under EPA Reg. No.
9688-264
No label revisions other than those indicated were
reported to the Agency.

For outdoor residential use only.

(SEE APPENDIX FOR CONSOLIDATED LIST OF MARKETING CLAIMS AND FULL WEED LIST)

Active Ingredients:	
Diquat Dibromide	0.12%
Fluazifop-p-butyl.....	0.06%
Dicamba*, dimethylamine salt.....	0.04%
Oxyfluorfen.....	0.10%
Other ingredients.....	99.68%
Total	100.00%

*0.0028lbs Dicamba acid equivalent or 0.03%

KEEP OUT OF REACH OF CHILDREN

CAUTION See back [Alternate:inside booklet [Alternate: panel] for additional precautionary statements

Net Contents:

First Aid

If in Eyes:	<ul style="list-style-type: none">• IMMEDIATELY hold eye open and rinse thoroughly and gently with water for 15-20 minutes. Remove contact lenses, if present, after the first 5 minutes, then continue rinsing eye. Call a Poison Control Center or doctor for treatment advice.
If on Skin or Clothing:	<ul style="list-style-type: none">• Take off contaminated clothing.• Rinse skin immediately with plenty of water for 15-20 minutes.• Call a Poison Control Center or doctor for treatment advice
Have the product container or label with you when calling a Poison Control Center, doctor, or going for treatment. You may also contact 1-800-332-5553 for emergency medical treatment advice.	
Note to Physician: If in eyes, treat symptomatically. Symptoms may develop gradually. Severe damage may be caused by apparently trivial contact and healing may be delayed. Medical supervision should be continued until healing is complete.	

PRECAUTIONARY STATEMENTS

Hazards to Humans and Domestic Animals

CAUTION. May cause eye irritation. Protective eyewear is strongly recommended when applying this product. Avoid contact with eyes, skin or clothing. Wash thoroughly with soap and water after handling and before eating, drinking, chewing gum or using tobacco.

USER SAFETY RECOMMENDATIONS

Users should wash hands before eating, drinking, chewing gum, using tobacco or using the toilet. Users should remove clothing immediately if pesticide gets inside. Then wash thoroughly and put on clean clothing.

Users should remove clothing and personal protective equipment immediately after handling this product. As soon as possible, wash thoroughly and change into clean clothing.

Environmental Hazards

This pesticide is toxic to fish and aquatic invertebrates. To protect the environment, do not allow pesticide to enter or run off into storm drains, drainage ditches, gutters or surface waters. Applying this product in calm weather when rain is not predicted for the next 24 hours will help to ensure that wind or rain does not blow or wash pesticide off the treatment area. This product may impact surface water quality due to runoff of rain water. This is especially true for poorly draining soils and soils with shallow ground water. This product is classified as having a high potential for reaching surface water via runoff. This chemical has properties and characteristics associated with chemicals detected in groundwater. This chemical may leach into groundwater if used in areas where soils are permeable, particularly where the water table is shallow. A level, well maintained vegetative buffer strip between areas to which this product is applied and surface water features such as ponds, streams, and springs will reduce the potential loading of fluzifop-p-butyl from runoff water and sediment. Runoff of this product will be reduced by avoiding applications when rainfall or irrigation is expected to occur within 48 hours. **NON-TARGET ORGANISM ADVISORY:** This product is toxic to plants and may adversely impact the forage and habitat of non-target organisms, including pollinators, in areas adjacent to the treated site. Protect the forage and habitat of non-target organisms by following label directions intended to minimize spray drift.

DIRECTIONS FOR USE

It is a violation of Federal law to use this product in a manner inconsistent with its labeling.

STOP. Read Entire Label Before use [Alternate: Read and follow label instructions] [Lift Here. Press to Reseal]



DO NOT allow people or pets to enter the treated area until sprays have dried.

APPLICATION RESTRICTIONS

DO NOT apply this product in a way that will contact any person, pet, either directly or through drift. Keep people and pets out of the area during application. **DO NOT** mow, cut or otherwise disturb treated vegetation, weeds, or plants for at least 7 days following application. **DO NOT** use on or around edible feed or food crops. Do not use in areas that are to be planted or seeded within 3 months. **DO NOT** use around newly planted trees, shrubs or flowers. **DO NOT** make more than 2 applications per year to any given area. **DO NOT** use for spot weed treatment in lawns, since Chemsico Herbicide RTU 4A kills all green plants, including lawn grasses. **DO NOT** apply this product via backpack sprayer.

SPRAY DRIFT ADVISORIES

Handheld Technology Applications:

Take precautions to minimize spray drift.

Where to Use [Alternate: Use Sites]

[GENERAL WEED CONTROL:] Use along [near] fences, paths, patios, sidewalks, curbs and driveways, around established ornamental trees, shrubs, flower beds and plantings, around buildings. Use for trimming and edging landscapes.

Tips for Replanting

When replanting trees, shrubs or flowers in an area treated with Chemsico Herbicide RTU 4A[Alternate: this product] within the last 90days[Alternate: 3 months]:

- Dig the planting hole
- Set aside the soil removed from the hole
- Place the plant in the hole according to the [Alternates: instructions,guide] on the plant
- Fill the hole with planting soil or other untreated soil
- Spread the soil removed from the hole in an area where no vegetation[Alternate: plants]is[are] desired

When to Apply

- For best results apply during warm, sunny weather (above 60°F) when weeds are actively growing. [Rainfall or watering 15[Alternate: 10, 20,25,30] minutes after application will not wash away effectiveness.]
- To avoid drift to desirable plants, apply when the air is calm.

How To Apply*

- Completely wet [Alternate: cover] the foliage [Alternate: leaves] of the target vegetation.
- Sprayed plants begin yellowing and wilting in as little as 3 hrs, with complete kill, including the roots, in 1 to 2 weeks.
- Thoroughly cover treated [bare][soil] areas to prevent new weeds and grasses from [growing][emerging] .
- Protect desirable plants with a piece of plastic or cardboard.
- If desirable plants are accidentally sprayed, wash plants with water immediately.

*Visual symptoms and time to complete kill will depend on weed and grass type, temperature and application rate.

How to use

Chemsico Herbicide RTU 4A is pre-mixed and ready to use and is formulated for “spot” treatment of weeds and grasses. [It is ideal for tough to reach weeds found in flowerbeds.] Use it on driveways and walkways, or around fences, trees, flower beds, shrubs and other areas in your yard (except in lawns).

One application of this product[Alternate: Chemsico Herbicide RTU 4A] will prevent re-growth for up to three [Alternates: four, five months***.] [Alternate: Provide season-long protection from re-growth.]

Does not kill all seeds, woody and semi-woody plants, and propagules in the soil, such as tubers and rhizomes.

(Note to Reviewer: Only one of the following sprayer options will be used on the marketed product label)

(OPTION A: Directions for Hand Sprayer)

How to prime and care for your sprayer:

1. CONNECT TRIGGER SPRAYER. Unscrew and discard the [white] cap on the bottle. Insert the hose into the bottle and tighten the cap securely.
2. PRIME SPRAYER. Turn the sprayer nozzle one-half turn counter-clockwise. Hold the sprayer lower than the bottle and squeeze the trigger several times until it sprays. Adjust the nozzle to coarse spray pattern. Avoid sprays which are too fine because they can drift and damage other plants.

(OPTION B: Directions for Trigger Sprayer)

1. Turn nozzle to coarse spray pattern.
2. Avoid sprays which are too fine because they can drift and damage other plants.



(OPTION C: Directions for Nested Sprayer)

1. Pull tab outward
2. Rotate lock ring counterclockwise to unlock.
3. Pull sprayer to uncoil tubing.
4. To replace, return sprayer to bottle opening.
5. Drape tubing through slot in the spray handle.
6. Turn lock ring clockwise to lock.

(OPTION D: Directions for Captive Sprayer)

HOW TO USE

BEFORE USE:

1. Shake well before each use.
2. Peel sticker from flip-top cap and open cap. Discard sticker.
3. Remove sprayer from its slot beneath the bottle handle and remove and discard plastic wrap. Pull black hose tip to completely extend tubing.
4. Firmly press black hose tip into opening in cap until it snaps into place.
5. Hold sprayer below the level of the container and prime by pumping trigger several times until product is dispensed.
6. Adjust nozzle to desired setting.

AFTER USE:

7. To store, turn sprayer nozzle off.
8. **DO NOT** disconnect hose.
9. Return sprayer to its slot. Hose can be pushed back into sprayer handle.

(OPTION E: Directions for Captive Sprayer with Snap Adapt Cap)

HOW TO USE

BEFORE USE:

1. Shake well before each use.
2. Open flip top closure
3. Remove sprayer from its slot beneath the bottle handle and unwrap the tubing. Pull hose plug to completely extend tubing.
4. Firmly press hose plug into opening in cap until it snaps into place.
5. Slide switch on hose plug counter-clockwise to "OPEN"
6. Adjust nozzle to desired setting, SPRAY or STREAM
7. Hold sprayer below the level of the container and prime by pumping trigger several times until product is dispensed.

AFTER USE:

1. To store, turn sprayer nozzle off.
2. Turn hose plug switch clockwise to "CLOSED"
3. **DO NOT** disconnect hose.
4. Return sprayer to its slot. Hose can be pushed back into sprayer handle.

(OPTION F: Directions for Auto Trigger Sprayer)

1. Shake well before use.
2. Remove plastic tab near top of sprayer to activate batteries
3. Twist nozzle to adjust spray from CLOSE to SPRAY or STREAM.
4. [Press the trigger to spray]. Spray just enough to cover area to be treated. Avoid contamination of food, feedstuffs and domestic water supplies. Cover all food-processing surfaces and utensils during treatment or thoroughly washed before use. Remove pets and birds and cover fish aquariums before spraying.
5. Release the trigger to stop spray.

Keep the reusable auto trigger [sprayer] for use on compatible refills.

(Option G: Directions for EZ SPRAY™ and AccuShot Sprayer)

[Optional Subheading: Operating Instructions for AccuShot Sprayer]

[Optional Subheading: EZSpray Directions]

1. [Unwrap sprayer.] Remove sprayer from side holder. Gently pull tubing out.
2. Remove seal from top of cap. Unplug cap.
3. Securely snap the [yellow] plug into hole on cap.
4. Remove plastic tab near bottom of sprayer to activate batteries.
5. Twist nozzle to adjust spray from CLOSE to SPRAY to STREAM.

(Alternate AccuShot Sprayer Directions)

1. Remove cap and replace with reusable AccuShot Sprayer. Make sure sprayer cap is tightly closed before use
2. Twist nozzle to adjust spray from CLOSE to SPRAY or STREAM.
3. [When priming the sprayer, hold sprayer level to the ground. Sprayer may not prime if it is held at an angle. Once primed, it will spray in any direction.]

HOW TO USE THE EZSPRAY™ [Alternate: HOW TO USE THE Accushot Sprayer]

1. Aim toward target weeds/plants, and away from people and pets.
2. To improve accuracy, use slider to extend wand.[Alternate: Use slider to extend wand and to improve accuracy.]

3. Press the trigger to spray.
4. Release the trigger to stop spray.

After use: 1. Twist nozzle completely to CLOSE position. 2. Secure sprayer upright [tip down] in holder. 3. **Failure to adjust nozzle completely to CLOSE position and properly secure sprayer in holder may result in leakage and damage to property or injury to people or animals.**

[Keep reusable AccuShot sprayer for use with Chemsico Herbicide RTU 4A]

To replace batteries: 1. Slide battery compartment door to unlatch and open. [Alternate: Use screwdriver to open battery compartment] 2. Remove used batteries and insert four new AA batteries **in correct positions** as marked per diagram inside of battery compartment. Never insert the positive end where the negative end belongs and vice versa. **Always** use a complete set of new batteries of the same type when replacing batteries. **Never** mix alkaline, carbon-zinc or rechargeable batteries. 3. Securely close battery compartment door. 4. **Always** follow manufacturer's recommendations for use and disposal of batteries. **Additional Operating Notes: DO NOT** submerge in water. Before each use inspect sprayer carefully, make sure hose is flexible and not kinked, worn or cracked, and that all connections are tight. When storing sprayer for prolonged periods remove batteries.

(Option H: Directions for EZ SPRAY™ and AccuShot Sprayer with Snap Adapt Cap)[Optional Subheading: Operating Instructions for AccuShot Sprayer]

[Optional Subheading: EZSPRAY™ Directions]

1. Shake well before each use
2. Remove sprayer from side holster [Alternate: holder]. [Unwrap the tubing] [Gently pull tubing out].
3. Open flip top closure
4. Securely snap the hose plug into opening in cap until it snaps into place.
5. Slide switch on hose plug counter-clockwise to "OPEN"
6. Remove plastic tab near top [Alternate: bottom] of sprayer to activate batteries.
7. Twist nozzle to adjust spray from CLOSE to SPRAY or STREAM.
8. [When priming the sprayer, hold sprayer level to the ground. Squeeze and hold trigger until liquid comes out the nozzle. Sprayer may not prime if it is held at an angle. Once primed, it will spray in any direction.]

(Alternate AccuShot Sprayer Directions with Snap Adapt Cap)

1. Remove cap and replace with reusable AccuShot cap and Sprayer. Make sure sprayer cap is tightly closed before use
2. Twist nozzle to adjust spray from CLOSE to SPRAY or STREAM.
3. Slide switch on hose plug counter-clockwise to "OPEN"
4. [When priming the sprayer, hold sprayer level to the ground. Sprayer may not prime if it is held at an angle. Once primed, it will spray in any direction.]

HOW TO USE THE EzSpray™ [Alternate: Accushot Sprayer] (For use with Snap Adapt Cap version of Directions)

- Aim toward target site [Alternate: area to be treated], and away from people and pets.
- [To improve accuracy, use slider to extend wand.][Use slider to extend wand and to improve accuracy.]
- Press the trigger to spray.
- Release the trigger to stop spray.

After use: 1. Twist sprayer nozzle completely to CLOSE position. 2. Turn hose plug switch clockwise to "CLOSED". 3. Secure sprayer upright [Alternate: tip down] in holster [Alternate: holder]. 4. **Failure to adjust nozzle completely to CLOSE position and properly secure sprayer in [holster] [holder] may result in leakage and damage to property or injury to people or animals.**

[Keep reusable AccuShot sprayer for use with Chemsico Herbicide RTU 4A]

To replace batteries: 1. Slide battery compartment door to unlatch and open. [Alternate: Use screwdriver to open battery compartment [Push release button near nozzle and lift up on battery hatch.]] 2. Remove used batteries and insert [four] [two] new AA batteries **in correct positions** as marked per diagram inside of battery compartment. Never insert the positive end where the negative end belongs and vice versa. **Always** use a complete set of new batteries of the same type when replacing batteries. **Never** mix alkaline, carbon-zinc or rechargeable batteries. 3. Securely close battery compartment door. 4. **Always** follow manufacturer's recommendations for use and disposal of batteries.

Additional Operating Notes: • **DO NOT** submerge in water. • Before each use, inspect sprayer carefully, making sure hose is flexible and not kinked, worn or cracked, and that all connections are tight. • When storing sprayer for prolonged periods, remove batteries.

(Option I: Directions for Easy Action Pump)

[Optional Subheading: EASY ACTION PUMP Directions] [Optional Subheading: HOW TO USE THE EASY ACTION PUMP]

1. For the initial use, remove the tie that is securing the handle to the base of the pump.
 2. **REMOVE THE WAND** from the holster and **PULL THE HOSE** from the storage compartment.
 3. Make sure the sprayer wand is securely tightened to the spray handle.
 4. **TURN THE PUMP HANDLE CLOCKWISE** to tightly seal the pump to the bottle and unlock the **pump-handle** for pumping.
 5. **RAISE THE PUMP HANDLE FROM THE BOTTLE AND PUMP** until you begin to feel resistance
 6. Secure the pump handle for carrying by pushing the handle into the base of the pump and turn the handle counterclockwise one quarter turn to lock.
 7. **BEGIN SPRAYING** by pushing down on the spray handle trigger.
 8. **ROTATE THE NOZZLE AT THE TIP** of the wand to adjust the spray from a direct spray to a broadcast mist.
 9. For continuous spray, push the trigger down and slide it forward to lock. **SLIDE THE TRIGGER BACK TO RELEASE** it from the lock position.
- Note:** If sprayer does not function properly, remove nozzle cover and check nozzle and holes in rubber component for obstructions. Replace nozzle cover and use as instructed above.]

(Option J: Directions for Easy Action Pump)

[Optional Subheading: EASY ACTION PUMP Directions] [Optional Subheading: HOW TO USE THE EASY ACTION PUMP]

1. For the initial use, remove the tie from the handle and the base of the pump.
2. **REMOVE THE WAND** from the holster and **PULL THE HOSE** from the storage compartment.
3. **TURN THE PUMP COLLAR CLOCKWISE** to make sure the pump is tightly sealed on the bottle.
4. **TURN THE PUMP HANDLE COUNTERCLOCKWISE** one-eighth turn to release the handle.
5. Raise the pump handle from the bottle and pump until you begin to feel resistance (10-20 pumps).
6. When you begin to feel resistance, push the pump handle into the base of the pump and turn the handle clockwise one-eighth turn to secure it for carrying.
7. Once the pump handle is secured **BEGIN SPRAYING** by pushing down on the spray handle trigger.
8. **ROTATE THE NOZZLE AT THE TIP** of the wand to adjust the spray from a direct spray to a broadcast mist.

Note: If sprayer does not function properly, remove nozzle cover and check nozzle and holes in rubber component for obstructions. Replace nozzle cover and use as instructed above.

REFILL DIRECTIONS

Refill only with Chemsico Herbicide Concentrate 4A. Remove cap. Carefully measure and mix 7 fl oz (14 tablespoons) in one gallon of water. Replace and tightly close cap. Wipe off any spilled product.

{OPTION K} [DIRECTIONS FOR Flip & Go SPRAYER PRODUCT]

For Initial Use Only: Remove Battery Isolation Strip [from] [beneath] sprayer and discard.

HOW TO USE

BEFORE USE:

1. Shake well before each use.
2. Flip [Rotate] [Raise] the [nozzle extension] wand up to the ["Ready to Use"] spray position.
3. Rotate nozzle from OFF ["X"] position to [desired] spray position.
4. Slide the lock [switch] [button] [away from] [trigger] [button]] [up] to the unlocked [open] [spray] position.
5. [Grab bottle and let arm hang naturally.] Press button down to spray.

AFTER USE:

6. [When] Once spraying is completed, slide the lock [switch] [button] towards trigger [button]] [down] to the locked [closed] position.
7. Rotate nozzle to OFF ["X"] position and flip [rotate] the [nozzle extension] wand down to storage position.

To replace batteries: While the lock is in the locked [closed] position, rotate sprayer counterclockwise and lift [pull up] on the sprayer. Push [Press] battery door tab and pull to open [remove] battery door. Insert and align new batteries to correct "+" and "-" designations as shown near the battery door. Close [Replace] battery door. Replace the sprayer on the bottle in the same position it was removed from, matching the arrows on the front of the sprayer and bottle. Rotate sprayer clockwise until the sprayer lines up with the front of the bottle.

[Keep reusable Flip & Go sprayer for use with [Product Name]]

STORAGE AND DISPOSAL (for use with Hand Sprayer)

Pesticide Storage: Turn the nozzle to "OFF" position and store with sprayer above the level of liquid in container to prevent leakage. Store this product in its original container in a secure storage area **Pesticide Disposal and Container Handling:** Nonrefillable container. **DO NOT** reuse or refill this container. **If empty:** Place in trash or offer for recycling if available. **If partly filled:** Call your local solid waste agency for disposal instructions. Never place unused product down any indoor or outdoor drain.

STORAGE AND DISPOSAL (for use with Trigger Sprayer)

Pesticide Storage: Store this product in its original container in a secure storage area. **Pesticide Disposal and Container Handling:** Nonrefillable container. **DO NOT** reuse or refill this container. **If empty:** Place in trash or offer for recycling if available. **If partly filled:** Call your local solid waste agency for disposal instructions. Never place unused product down any indoor or outdoor drain.

STORAGE AND DISPOSAL (For use with Auto Trigger Sprayer)

Pesticide Storage: Store in original container in a cool, dry area away from heat or open flame and in an area inaccessible to children and pets. Keep from freezing.

Pesticide Disposal: Reusable Auto Trigger [Sprayer]: DO NOT discard. Keep the Auto Trigger [Sprayer] for use on Chemsico Herbicide RTU 4A. **If Empty:** Non-refillable container. **DO NOT** reuse or refill this container. Place in trash or offer for recycling if available. **If partly filled:** Call your local solid waste agency for disposal instructions. Never place unused product down any indoor or outdoor drain.

STORAGE AND DISPOSAL

Pesticide Storage: Store in cool dry area away from heat or open flame.

Pesticide Disposal: Nonrefillable container. **DO NOT** reuse or refill this container unless the directions for use allow a different (concentrated) product to be diluted in the container. **If empty:** Place in trash or offer for recycling if available. **If partly filled:** Call your local solid waste agency for disposal instructions. Never place unused product down any indoor or outdoor drain.

STORAGE AND DISPOSAL (for use with EZSPRAY sprayer)

Pesticide Storage: Turn the nozzle to "CLOSE" position. To prevent leakage, attach sprayer to clip. Store this product in its original container in a secure storage area. **Pesticide Disposal and Container Handling:** Nonrefillable container. **DO NOT** reuse or refill this container unless the directions for use allow a different (concentrated) product to be diluted in the container. **If empty:** Place in trash or offer for recycling if available. **If partly filled:** Call your local solid waste agency for disposal instructions. Never place unused product down any indoor or outdoor drain.

STORAGE AND DISPOSAL (for use with AccuShot Sprayer)

Pesticide Storage: Turn the nozzle to "CLOSE" position. To prevent leakage, attach sprayer to clip. Store this product only in its original container in a secure storage area away from sources of heat or open flame and in an area inaccessible to children and pets. Keep from freezing. **Pesticide Disposal: DO NOT** discard the AccuShot Sprayer. Keep the AccuShot Sprayer for use on Chemsico Herbicide RTU 4A. Nonrefillable container. **DO NOT** reuse or refill this container unless the directions for use allow a different (concentrated) product to be diluted in the container. **If empty:** Place in trash or offer for recycling if available. **If partly filled:** Call your local solid waste agency for disposal instructions. Never place unused product down any indoor or outdoor drain.

STORAGE AND DISPOSAL (For AccuShot Sprayer with Snap Adapt Cap)

Pesticide Storage: Turn the nozzle to "CLOSE" position. To prevent leakage, place sprayer in holster. Store this product only in its original container in a secure storage area away from sources of heat or open flame and in an area inaccessible to children and pets. Keep from freezing. **Pesticide Disposal: DO NOT** discard the AccuShot Sprayer. Keep the AccuShot Sprayer for use on Chemsico Herbicide RTU 4A. Nonrefillable container. **DO NOT** reuse or refill this container unless the directions for use allow a different (concentrated) product to be diluted in the container. **If empty:** Place in trash or offer for recycling if available. **If partly filled:** Call your local solid waste agency for disposal instructions. Never place unused product down any indoor or outdoor drain.

STORAGE AND DISPOSAL (for use with Easy Action Pump Option I)

Pesticide Storage: Slowly turn the pump handle counterclockwise to loosen the pump mechanism from the bottle to release pressure. Turn the handle back clockwise to seal the unit for storage. Turn the handle counterclockwise one quarter turn to lock the handle. Push the hose back into the storage compartment. Place the wand back in the holster. Store this product in its original container in a secure storage area. **Pesticide Disposal and Container Handling:** Nonrefillable container. **DO NOT** reuse or refill this container unless the directions for use allow a different (concentrated) product to be diluted in the container. **If empty:** Place in trash or offer for recycling if available. **If partly filled:** Call your local solid waste agency for disposal instructions. Never place unused product down any indoor or outdoor drain.

STORAGE AND DISPOSAL (for use with Easy Action Pump Option J)

Pesticide Storage: Slowly turn the pump collar counterclockwise to loosen the seal and release pressure. Turn the collar back clockwise to retighten the seal. Push the hose back into the storage compartment. Place the wand back in the holster. Store this product in its original container in a secure storage area. **Pesticide Disposal and Container Handling: If empty:** Nonrefillable container. **DO NOT** reuse or refill this container unless the directions for use allow a different (concentrated) product to be diluted in the

container. Place in trash or offer for recycling if available. **If partly filled:** Call your local solid waste agency for disposal instructions. Never place unused product down any indoor or outdoor drain.

STORAGE AND DISPOSAL *{For use with Flip and Go Sprayer Option K and other sprayers as appropriate}*

Pesticide Storage: Turn the nozzle to "CLOSE" position. To prevent leakage, [flip] [rotate] the [nozzle extension] [wand] down to storage position. Store this product only in its original container in a secure storage area away from sources of heat or open flame and in an area inaccessible to children and pets. Keep from freezing. **Pesticide Disposal:** [Do not discard the Flip and Go Sprayer. Keep the Flip and Go Sprayer for use on new refill container.] Nonrefillable container. Do not reuse or refill this container unless the directions for use allow for reuse on a different (concentrated) product to be diluted in the container or reuse on a new refill container. **If empty:** Place in trash or offer for recycling if available. **If partly filled:** Call your local solid waste agency for disposal instructions. Never place unused product down any indoor or outdoor drain.

NOTICE: To the extent consistent with applicable law buyer assumes all responsibility for safety and use not in accordance with directions.

[Questions or Comments? call 1-800-332-5553]

[**If you are not satisfied with this product for any reason, send your written request for a refund to the address below, together with the original dated store receipt showing the price you paid. Please allow 6-8 weeks for processing.]

Made in the USA by Chemsico, Division of United Industries Corp., P. O. Box 142642, St. Louis, MO 63114-0642

EPA Reg. No. 9688-264
EPA Est. No. 9688-MO-1

© 2020

OPTIONAL MARKETING CLAIMS

1. [****Guaranteed Results**] [or your money back] [**Money Back Guarantee****]
2. [Better] [Best] value
3. [Formula] enters the plant within one to two hours [won't wash off]
4. Absorbed into the plant
5. Absorbed on Contact
6. Can be Used Over the Root Zones of Trees, Shrubs or Desirable Plants
7. Control that doesn't wash away
8. Controls [Hardy] [Tough] [Hard To Kill] Weeds and Grasses
9. Dead [weeds] [and] [grass] in 24 hours [and they'll never come back]
10. Dead Weeds Guaranteed** [****Or Your Money Back**]
11. Do-it-yourself weed killer
12. Effective even if it rains
13. Eliminates [kills] all common weeds and grasses
14. Eliminates Roots & Weeds, [Guaranteed**]
15. Eliminates Weeds, [Guaranteed**]
16. Fast & [and] complete
17. Fast Acting [Formula]
18. Fastest Replanting Available
19. For [Spot] Treatment of Unwanted Weeds and Grasses
20. For use [Ideal] [Can be Used] [Use in and around] [in] [on] [for] [along] flowerbeds
21. For Use [Use] [Ideal] [Can be Used] [Use in and around] [in] [on] [for] [along] [around] [fences], [driveways], [walkways], [shrubs], [trees] [ornamentals] [Walks] [Mulch Beds] [Gravel] [and] [Driveways] [Curbs]
22. For walks, drives, fences, patios and similar areas
23. Keeps Working, Even If it Rains
24. Kills All Treated Weeds
25. Kills Even Tough Weeds & Grasses
26. Kills from the Inside Out
27. Kills Over 500 [500+] Types Of Weeds [weed types] [As Listed]
28. Kills Over 500 [500+] Varieties Of Broadleaf And Grassy Weeds [As Listed]
29. Kills 521 [types of] weeds as listed
30. Kills all weeds as listed
31. Kills the Entire Plant
32. Kills the Root
33. Kills the Root So Weeds Won't Grow Back
34. Kills the Root!
35. Kills the Weed you see and the Root you Don't

- 36. Kills Weeds and Unwanted Grasses
- 37. Kills Weeds and Unwanted Grasses, [Roots and All]
- 38. Kills Weeds in [a] [one] day
- 39. No Measuring
- 40. No Mixing [Required] [Necessary]
- 41. No Root, No Weeds, [Guaranteed]
- 42. Quick-Kill Formula
- 43. Rainfast in [10]15 [20] [25] [30] minutes for control that doesn't wash away [won't wash away]
- 44. Rainfast in [10]15 [20] [25] [30] Minutes – Starts to enter the Plant on Contact
- 45. Rainproof in [10]15 [20] [25] [30] Minutes
Optional Graphic Icon (*May appear in black & white or color*):



- 46. Rainfast in [10]15 [20] [25] [30] Minutes
- 47. Rain resistant in [10]15 [20] [25] [30] Minutes
- 48. [Rainfast][Rainproof] in [10]15 [20] [25] [30] minutes for Control That Won't Wash Away
- 49. Ready-To-Use
- 50. Replant flowers, trees & shrubs [in half the time of other brands] [the same weekend]
- 51. Can be used around trees & shrubs
- 52. Satisfaction guaranteed [or your money back] [with proof of purchase]
- 53. See Results in 24 hrs!
- 54. Starts to work in 24 hours
- 55. Starts Working in Hours
- 56. Systemic formula
- 57. Systemic Weed and Grass Killer
- 58. Water-based
- 59. Won't Wash Away
- 60. Works the First Time, [Every time]
- 61. Works in 24 hours
- 62. Works 4 Ways : (1)Results in 24 hrs, (2) Kills over 155 varieties of Broadleaf & Grassy Weeds as listed, (3) Kills the Root (4) Prevents re-growth for up to 3 months*** [season-long control]
- 63. Starts Working Immediately !
- 64. Use on Paved & Landscaped Areas
- 65. Visible Results [as Fast as] [in] 3 Hours
Optional Graphic Icon (*May appear in black & white or color*):



- 66. [Prevents][Controls][Kills] weeds for up to 3 months*** [season long]
- 67. [Prevents][Controls][Kills] weeds for up to [3][4][5] months***
- 68. One application] kills and prevents [weeds][weeds and grasses][from coming back] for up to [3][4][5] months***
- 69. Weed killer plus preventer
Optional Graphic Icon (*May appear in black & white or color*):



- 70. [One application] kills and prevents [weeds][weeds and grasses][from coming back][all season long][for 3 months***][for the entire season]
- 71. Kills weeds and forms a protective barrier to prevent [new weeds][growth]
- 72. Apply Once and you're done
- 73. Once & Done
- 74. Only one application needed [for season long control]
- 75. [Weed] killer plus preventer
- 76. Kills existing weeds down to the root and prevents and new weeds and grasses from growing for up to 3 months***
- 77. Kills weeds fast and prevents new weeds for up to 3 months***
- 78. Dual Action Formula
- 79. Plant new flowers, trees & shrubs in treated area after just 1 day
Optional Graphic Icon (*May appear in black & white or color*) :



- 80. Kills weeds AND grass
- 81. Read back label [for more information]
- 82. See inside booklet for complete Directions for Use, including How to Use, How and When to Apply and Replanting Tips
- 83. One gallon covers 260 sq ft

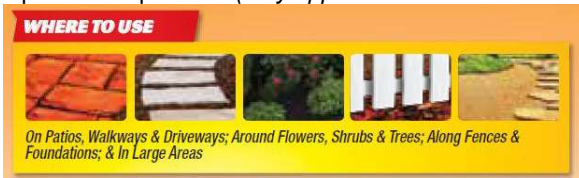
84. 1.33 gallons covers 345 sq ft
85. Treated, dead weeds [and grasses] will gradually decompose and disappear
86. Dead weeds [and grasses] gradually decompose [and disappear]
87. Dead weeds [and grasses] eventually decompose [and disappear]
88. Dead weeds [and grasses] decompose [and disappear]
89. If you would prefer to remove the dead weeds [and grasses] by hand, wait up to 7 days after treatment to allow the product to do its job and kill the weeds and grasses to the root
90. [If you'd prefer], wait 7 days for product to kill weeds [and grasses] to the root then remove by hand
91. [If you'd prefer], wait 7 days then pull dead weeds [and grasses]
92. [If you'd prefer], pull dead weeds [and grasses] after 7 days
93. [If you'd prefer], pull them after 7 days
94. **[How it Works :]** Weeds [and grasses] have different types of roots and need different chemicals in order to kill each type. These chemicals work to kill the cells of the weeds [and grasses] by entering the plant through the leaves and moving down to the roots.
95. **[How it Works :]** Weeds [and grasses] have different types of roots and need different chemicals in order to kill each type
96. **[How it Works :]** Different chemicals are needed to kill different root types
97. **[How it Works :]** Different chemicals are needed to kill different weeds [and grasses]
98. **[How it Works :]** These chemicals work to kill the cells of the weeds [and grasses] by entering the plant through the leaves and moving down to the roots
99. **[How it Works :]** These chemicals kill weed [and grass] cells by entering through leaves and moving to roots
100. **[How it Works :]** These chemicals kill weeds [and grasses] by killing the plant cells
101. **[How it Works :]** **Diquat Dibromide** : Burn down agent [Lets you see the product is working [fast]]. **Fluazifop-p-butyl** : Kills grasses to the root. **Dicamba** : Kills listed [tough] broadleaf [dandelion-type][thistle-type] weeds to the root. **Oxyfluorofen**: [Residual agent] [- Controls weeds and grasses for up to [3] [4] [5] months***]. Weeds and grasses have different types of roots and need different chemicals in order to kill each type. These chemicals work to kill the cells of the weeds and grasses by entering the plant through the leaves and moving down to the roots.
102. **[How it Works :]** **Diquat Dibromide** : Burn down agent [Lets you see the product is working [fast]].
103. **[How it Works :]** **Fluazifop-p-butyl** : Kills grasses to the root.
104. **[How it Works :]** **Dicamba** : Kills listed [tough] broadleaf [dandelion-type][thistle-type] weeds to the root.
105. **[How it Works :]** Weeds and grasses have different types of roots and need different chemicals in order to kill each type; these chemicals work to kill the cells of the weeds and grasses by entering the plant through the leaves and moving down to the roots
106. **[How it Works :]** **Oxyfluorofen** : [Is a] [Residual agent] [Controls weeds and grasses for up to [3][4][5] months***]
107. **[How it Works :]** Weeds and grasses have different types of roots and need different chemicals in order to kill each type
108. **[What to Expect :]** *Visual symptoms and time to complete kill will depend on weed [or grass] type, temperature and application rate. Examples of visual symptoms you can expect to see as the product works are yellowing/browning of leaves and leaves curling, twisting, wilting and shriveling. Treated, dead weeds [and grasses] will gradually decompose and disappear. If you would prefer to remove the dead weeds [and grasses] by hand, wait up to 7 days after treatment to allow the product to do its job and kill the weeds and grasses to the root.
109. **[What to Expect :]** *Visual symptoms and time to complete kill [will] depend on weed [and grass] type, temperature and application rate
110. **[What to Expect :]** *Visual symptoms and time to 100% kill [will] depend on weed [and grass] type, temperature and application rate
111. **[What to Expect :]** Weed [and grass] type, temperature and application rate affect visual symptoms and time to complete [100%] kill
112. **[What to Expect :]** Examples of visual symptoms you can expect to see as the product works are yellowing/browning of leaves and leaves curling, twisting, wilting and shriveling.
113. **[What to Expect :]** Examples of visual symptoms are yellowing/browning of leaves and leaves curling, twisting, wilting and shriveling.
114. **[What to Expect :]** Expected visual symptoms: yellowing/browning of leaves and leaves curling, twisting, wilting and shriveling.
115. **[What to Expect :]** Expected visual symptoms: leaves yellowing/browning, then curling, twisting, wilting and shriveling.
116. **[When to Use :]** For best results, apply when max daytime temperature is above 60°F. The higher the temperature, the faster the product will work. To avoid drift to desirable plants, don't apply when it's windy
117. **[When to Use :]** [For best results], apply when max daytime temperature is above 60°F
118. **[When to Use :]** [For best results], apply when temperature is above 60°F
119. **[When to Use :]** [For best results], apply above 60°F

Optional Graphic Icon (May appear in black & white or color) :

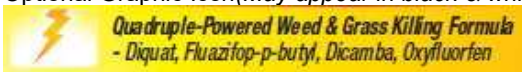


120. **[When to Use :]** The higher the temperature, the faster the product will work

- 121. **[When to Use :]** Works faster at higher temperatures
- 122. **[When to Use :]** To avoid drift to desirable plants, don't apply when it's windy
- 123. **[Where to use :]** [Use] On [patios] [walkways] , [driveways] [flower beds]; [around] [flowers][shrubs] & [trees]] ; [along [fences] & [foundations]] & [in large areas]
Optional Graphic Icon(May appear in black & white or color) :



- 124. **[What it Does :]** Kills all types of listed weeds & grasses, including dandelion, clover, chickweed, plantain, annual bluegrass and crabgrass. [see inside for complete list]
- 125. **[What it Does :]** Kills all types of listed weeds & grasses
- 126. Effective formula [- Diquat, Fluazifop-p-butyl, Dicamba, Oxyfluorfen -] for killing weeds
- 127. Contains four active ingredients [- Diquat, Fluazifop-p-butyl, Dicamba, Oxyfluorfen -] for [quick] weed [and grass] killing [power]
- 128. [Powered by][Built on][Fueled by][Charged with] 4 Active Ingredients [- Diquat, Fluazifop-p-butyl, Dicamba, Oxyfluorfen -] [for [quick] weed [and grass] killing [power]]!
- 129. Quad[ruple]-Powered Weed [and grass] Killing Formula [- Diquat, Fluazifop-p-butyl, Dicamba, Oxyfluorfen]
Optional Graphic Icon(May appear in black & white or color) :



***Does not kill all seeds, woody and semi-woody plants, and propagules in the soil, such as tubers and rhizomes.

Optional Marketing Claims- Sprayer Claims

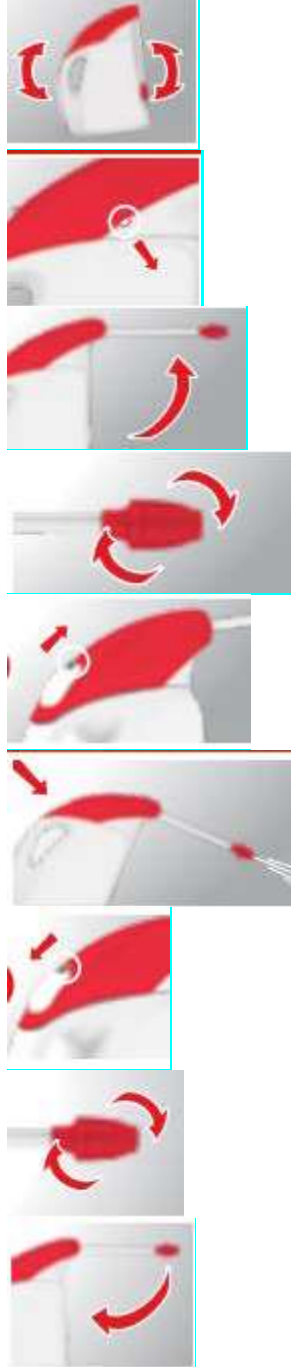
- 130. Continuous Spray
- 131. Increased Pressure for (5 [10] [X] Minute) Continuous Spray
- 132. Up to 5 [10] [X] minutes of Continuous Spray
- 133. Adjustable Spray Patterns [For Spot Application][Covers Large Area]
- 134. Extended Wand for Hard-to-Reach Areas
- 135. Locking Trigger Reduces Hand Fatigue
- 136. Easy Action Pump [Sprayer]
- 137. No Assembly Required
- 138. Reusable Battery Sprayer
- 139. Battery Powered Sprayer
- 140. Reusable Auto Trigger [Sprayer]
- 141. For Use with Reusable Auto Trigger [Sprayer]
- 142. Refill
- 143. Continuous [Adjustable] Spray [for Entire Home Protection]
- 144. Continuous Action Power Sprayer
- 145. Continuous Power Trigger [Spray]
- 146. Press and Hold Technology
- 147. EZSpray
- 148. Comfort Power Sprayer [Trigger]
- 149. Reduces[No] Hand Fatigue
- 150. No pumping [no squeezing], just press to spray
- 151. Batteries [not] included
- 152. Includes [X] AA Batteries
- 153. AccuShot
- 154. AccuShot Sprayer
- 155. [Just] Aim & Spray
- 156. Comfort-Power-Precision
- 157. With Extendable Wand [for improved accuracy]
- 158. With Adjustable Wand [for improved accuracy]
- 159. For use with Reusable AccuShot Sprayer

{Flip & Go Sprayer Claims}

- 160. [new] Flip & Go Sprayer [is] Designed for small spaces {"New" reference to be used only for a 6 month Duration after introduction into the marketplace}
- 161. Designed for [your] accuracy
- 162. [new] Flip & Go Sprayer features a [built with] lightweight bottle [design] {"New" reference to be used only for a 6 month duration after introduction into the marketplace}

163. Balanced [Intuitive] [Modern] [Sleek] design
164. [new] Flip & Go Sprayer features a slim bottle [profile] [for convenient storage] {"New" reference to be used only for a 6 month duration after introduction into the marketplace}
165. [new] Flip & Go Sprayer [has] [3] [different] spray patterns [for multiple applications] [for precise treatments] [ideal for
166. indoor/outdoor use] {"New" reference to be used only for a 6 month duration after introduction into the marketplace}
167. [Accurate] [continuous] spray [technology]
168. [new] Flip and Go Sprayer features an Accurate nozzle [and] [extension] [wand] {"New" reference to be used only for a 6 month duration after introduction into the marketplace}
169. All-in-one battery power [powered] sprayer
170. [Contains] [Includes] AA Batteries
171. Replaceable batteries
172. [new] Flip and Go with continuous [Power] Sprayer [Technology] {"New" reference to be used only for a 6 month duration after introduction into the marketplace}
173. [new] Flip and Go [is] [[Designed] [ideal] [perfect]] for [small area(s)] spot treatment {"New" reference to be used only for a 6 month duration after introduction into the marketplace}
174. [new] Flip and Go featuring a [an] [Easy] [simple] [precise] pivot [extension] wand {"New" reference to be used only for a 6 month duration after introduction into the marketplace}
175. [new] Flip and Go [is] easy to maneuver [in] [to] [under] [hard to reach places] {"New" reference to be used only for a 6 month duration after introduction into the marketplace}
176. Sprays in hard to reach places
177. Extended [powerful] spray
178. [new] Flip and Go [with] Flip and go spray [sprayer] {"New" reference to be used only for a 6 month duration after introduction into the marketplace}
179. [Just] point [aim] [flip]] and spray [shoot] [treat]
180. [Just] [Simply] Flip & Spray
181. [new] Flip and Go featuring [features] multiple spray patterns {"New" reference to be used only for a 6 month duration after introduction into the marketplace}
182. [new] Flip and Go with a [power] [precision] spray wand {"New" reference to be used only for a 6 month duration after introduction into the marketplace}
183. Precise [precision] spray [pattern]
184. [new] Flip and Go functions with [just] a [simple] press of a button {"New" reference to be used only for a 6 month duration after introduction into the marketplace}
185. Spray with a [simple] press of a button
186. Reusable sprayer
187. [new] Flip and Go Bottle fits [[on] [in] under cabinets [shelves] [under sinks] [with ease] {"New" reference to be used only for a 6 month duration after introduction into the marketplace}
188. Flip and Go [for] convenient Storage
189. Easy to store [store] [Storage] [bottle]
190. [new] Flip and Go [is designed to] Fit[s] on most shelves [in small storage areas] {"New" reference to be used only for a 6 month duration after introduction into the marketplace}
191. Lock button prevents drips [spills] [leaks] in storage
192. [new] Flip and Go [with a] locking trigger prevents drips [leaks] [spills] [in storage] {"New" reference to be used only for a 6 month duration after introduction into the marketplace}
193. 1 [One] [Single] Hand [usage] [design] [grip]
194. 1 [One] [Single] hand spraying [operation]
195. [new] Flip and Go [design] has single hand usage [operation] allowing you to keep 1 [one] hand free for ability to easily move away [curtains] [rugs] [furniture] [or other items] {"New" reference to be used only for a 6 month duration after introduction into the marketplace}
196. Comfort grip [design] [handle]
197. Flip and Go [features] Comfort & Accuracy [all] in one
198. Convenient [easy to grab] [handle] [fits] [for] all hand sizes
199. [Easy] balance grip
200. [new] Flip and Go [features] with [Easy] [little] no set-up {"New" reference to be used only for a 6 month duration after introduction into the marketplace}
201. Easy to grab [handle] [design]
202. Easy [Simple] to [hold] use
203. Grab and Go
204. No bending [over] required
205. Easy control [with one hand]
206. [new] Flip and Go [is] designed for [your] comfort [balance] [comfort & balance] {"New" reference to be used only for a 6 month duration after introduction into the marketplace}

{Optional images to accompany Flip and Go Sprayer directions}



OPTIONAL PICTURES AND ACCOMPANYING LANGUAGE (Note to Reviewer: Pictures will not appear on product label without text that lists the type of weed, time difference between the pictures, and description of visual symptoms)

[What to Expect:]



Pre-application 3 hours 6 hours 24 hours

- Pictured Weed: Plantain
- Examples of visual symptoms you can expect to see as the product works are yellowing/browning of leaves and leaves curling, twisting, wilting and shriveling. [Visual symptoms include leaves yellowing/browning, curling, twisting, wilting and shriveling.]
- [Treated, dead weeds [and grasses] will gradually decompose and disappear. If you would prefer to remove the dead weeds [and grasses] by hand, wait up to 7 days after treatment to allow the product to do its job and kill the weeds and grasses to the root.]

OPTIONAL LANGUAGE FOR PICTURES

1. *Visual symptoms and time to complete kill [will] depend on weed [and grass] type, temperature and application rate
2. *Visual symptoms and time to 100% kill [will] depend on weed [and grass] type, temperature and application rate
3. *Weed [and grass] type, temperature and application rate affect visual symptoms and time to complete kill
4. Examples of visual symptoms you can expect to see as the product works are yellowing/browning of leaves and leaves curling, twisting, wilting and shriveling.
5. Examples of visual symptoms are yellowing/browning of leaves and leaves curling, twisting, wilting and shriveling.
6. Expected visual symptoms: yellowing/browning of leaves and leaves curling, twisting, wilting and shriveling.
7. Expected visual symptoms: leaves yellowing/browning, then curling, twisting, wilting and shriveling.

OPTIONAL MARKETING LANGUAGE AND PRODUCT FACTS BOXES

[Chemsico Herbicide RTU 4A eliminates all types of [common][existing] weeds and grasses [as listed] and prevents new weeds from growing all season long. (illustrations) This product can be used [for] [edging around lawns] [ornamental garden plot preparation] in driveways, walkways, curbs, along fences and foundations, near trees and shrubs, in flower beds, mulch beds and other similar areas of the yard to get rid of undesirable vegetation.]

[This product [is a non-selective herbicide that] will kill any vegetation contacted and [it] will prevent [re-growth] [new weeds and vegetation from emerging] for up to 3 [4][5] months***. It enters plants through the leaves and moves down to the roots. This will ensure that the entire plant is eliminated. [Chemsico Herbicide RTU 4A][it][This product] also provides a [protective][invisible] barrier that prevents [weeds and grasses][new weeds] from [emerging][germinating][growing] for up to three [3] [4][5] [months***]. Avoid direct spray or drift onto desirable plants, lawn grasses, shrubs, and trees. Protect desirable plants and vegetation with a piece of plastic or cardboard. If desirable plants are accidentally sprayed, wash plants with water immediately.]

[This container covers approximately 260 sq. ft. Coverage may be reduced if large brush species are treated.]

***Does not kill all seeds, woody and semi-woody plants, and propagules in the soil, such as tubers and rhizomes.

Product Facts

Container treats [more than][over] 200 weeds [24 fl oz.] [Container treats 48 sq ft]
Container treats [more than][over] 500 weeds [1/2 gal, 2L][Container treats 130 sq ft]
Container treats [more than][over] 1000 weeds [1 gal, 4 L][Container treats 260 sq ft]
Container treats [more than][over] 1000 weeds [1.33 gal][Container treats 345 sq ft]
Container treats [more than][over] 2000 weeds [2 gal] [Container treats 520 sq ft]

KILLS WEEDS

[illustrate grassy, broadleaf and woody weeds]
ALL TYPES OF WEEDS [AND][&] GRASSES

WHERE TO USE:

- [On patios, walkways or driveways]
- [In flower [beds] [gardens]
- [Around established shrubs & trees]
- [Along fences [and foundations]
- [Other areas in your yard (except in lawns)]
- [Edging around lawns]
- [In landscaping]
- [Around ornamentals]

Questions & comments:

Call 800-332-5533 or www.spectracide.com(address)

PRODUCT FACTS

WHAT IT DOES: Kills all types of listed weeds and grasses [down to the root]. Prevents [weeds][weed and grass][re-growth] for up to 3 [4][5] months***

***Does not kill all seeds, woody and semi-woody plants, and propagules in the soil, such as tubers and rhizomes.

[all season long] by creating a [an invisible barrier [that prevents new weeds from germinating]

WHERE TO USE: Outdoors [icon]: On patios, walkways, driveways, around flowers, shrubs and [or] trees; along fences, foundations, and in large areas

WHEN TO USE: For best results, apply during warm, sunny weather (above 60°F)

Questions & Comments:

Call 1-800-332-5553 or visit our website.

Optional Weed List

[KILLS] [CONTROLS] MOST COMMON [TOUGH] WEEDS AND GRASSES AND PREVENTS RE-GROWTH FOR UP TO [THREE][FOUR][FIVE] MONTHS*:**

alder	bluegum	Common Chickweed
Alkali Mallow	box elder	common cinquefoil
Alsike Clover	Bracted plantain	Common Dandelion
alyce clover	Brambles	common groundsel
amur honeysuckle	Brass buttons	common lambsquarters
Annual Bluegrass (Poa annua)	Brazil Pusley	Common Lespedeza
Annual Bluegrass (Poa annua)	brazilian pepper	Common Mallow
annual mouse-ear chickweed	Bristly Mallow	common mullein
annual oxalis	Bristly oxtongue	common plantain
annual purple cudweed	broadleaf plantain	Common Purslane
annual ryegrass	broadleaf signalgrass	common ragweed
Annual Sowthistle	Broad-leaved dock	common sowthistle
annual wild geranium	bromegrass	Common Speedwell
annual yellow sweet clover	Broomweed	common vetch
arkansas rose	brownseed	Common Yarrow
Artichoke	Buckhorn	coral bead
artichoke thistle	buckhorn (narrowleaf) plantain	corn chamomile
Ash	buckwheat	Corn Speedwell
asiatic pennywort	Bulbous buttercup	Corn spurry
Aspen	bull nettle	cotton thistle
Aster	bull thistle	coyote
Austrian fieldcress	Bur Ragweed	coyote brush
bahiagrass	burclover	crabgrass
Ball Mustard	Burdock	Cranesbill
bamboo	Burning nettle	creeping beggarweed
barnyardgrass	Burweed	creeping bentgrass
Bedstraw	bush honeysuckle	Creeping Buttercup
beggartick	bushy aster	creeping Charlie
beggarweed	bushy buttonweed	Creeping Jenny (Creeping Charlie)
bentgrass	Buttonweed	Creeping Woodsorrel
Bermudagrass	california rose	Crimson Clover
bidens	Canada thistle	croton
big leaf maple	Carolina geranium (wild)	Crowfootgrass
Bigroot Morningglory	Carpetweed	Cudweed
Bi-lobed Speedwell	catchweed	Cupid shaving brush
bindweed (wild morningglory)	Catchweed bedstraw	curly dock
Birch	Catnip	curly indigo
Bird vetch	Catsear	cutleaf evening primrose
bird's-eye pearlwort	catsear dandelion	Daisy Fleabane (annual)
bitter sneezeweed	cattail	dallisgrass
Bitter wintercress	ceanothus	dandelion
Bitterweed	Cedar	Dayflower
Black cherry	centipedegrass	dead nettle
black cottonwood	Chamber bitter	dewberry
Black medick	chamise	Dichondra
Black mustard	cheeseweed	diffuse lovegrass
black willow	cherry	distaff thistle
Blackberry	chickweed	Dock
Black-eyed Susan	Chicory	dog fennel
Blackseed plantain	choke cherry	Dogbane
Blessed thistle	Cinquefoil	Dogfennel
bloodflower	Clover	Dollarweed (pennywort)
Bloodflower milkweed	Cockle	Doveweed
Blue lettuce	cocklebur	drummonds thistle
blue medick	coffeebean	Dwarf Mallow
Blue Mustard	coffeeweed	Elderberry
blue toadflax	cogongrass	elk thistle
Blue vervain	common burdock	elm
bluegrass	Common Buttonweed (poorjoe)	English Daisy

eucalyptus
 evening primrose
 evergreen blackberry
 facelis
 fall dandelion
 fall panicum
 False dandelion (∞spotted catsear & common catsear)
 false flax
 False sunflower
 fennel
 fescue
 fescue species
 Field bindweed (*morningglory & creeping jenny)
 field horsetail rush
 Field oxeye-daisy (*creeping oxeye)
 field pansy
 field pennycress
 field violet
 filaree
 Fleabane
 flix weed
 Flodman Thistle (prairie)
 Florida Betony
 florida prickly blackberry
 Florida pusley
 florida yellow woodsorrel
 foxtail
 french broom
 Frenchweed
 Galinsoga
 garden spurge
 garlic mustard
 Giant Foxtail
 giant ragweed
 giant reed
 Goathead
 goatsbeard
 Goldenrod
 Gooseberry
 goosegrass
 gray thistle
 great burdock
 green foxtail
 ground ivy (creeping charlie)
 Groundsel
 guineagrass
 Gumweed
 Hackberry
 Hairy Beggarticks
 Hairy Bittercress
 hairy buttercup
 hairy crabgrass
 Hairy fleabane
 Hairy Galinsoga
 Hairy Vetch
 Hawkweed
 hawthorn
 hazel
 Healall
 Heartleaf drymary
 Heath Aster
 Hedge bindweed

Hedge mustard
 Hemp
 hemp sesbania
 henbit
 himalayan blackberry
 Hoary cress
 Hoary plantain
 Hoary vervain
 honeysuckle
 Hop Clover
 horsetail
 horseradish
 horsetail
 horsetail rush
 horseweed/marestail
 iceplant
 Indian Mock Strawberry
 Indian Mustard
 Innocence (Blue-eyed Mary)
 ironweed
 italian thistle
 Ivyleaf Morningglory
 Ivyleaf Speedwell
 japanese honeysuckle
 jewelweed
 Jimsonweed, Devil's Snare
 Johnny-Jumpup violet
 Johnsongrass
 jungerice
 Kentucky bluegrass
 kikuyugrass
 Kikuyugrass (seedling)
 knapweed
 knawel
 knotweed
 Kochia
 Kudzu
 Ladysthumb Smartweed
 lambsquarters
 Lanceleaf Ragweed
 lantana
 Large Crabgrass
 Large Flower Pusley
 Lawn Burweed (spurweed)
 leafy thistle
 Lespedeza
 Lilac
 little bittercress
 little mallow
 locoweed
 locust
 London rocket
 lupine
 mackenzie willow
 madrone
 mallow
 maple
 Marcela
 marshelder
 Matchweed
 mayweed
 Meadow Hawkweed
 meadow thistle
 mesquite

Mexican Morningglory
 Mexicanweed
 milk thistle
 Milk vetch
 milkweed
 mimosa∞
 Moneywort
 Morning glory
 Mouseear Chickweed
 Mouseear hawkweed
 Mugwort
 Multiflora rose
 Musk thistle
 Mustard
 narrow leaved willow
 narrowleaf cudweed
 narrowleaf plantain
 Narrowleaf vetch
 Nettle
 nightshade (silverleaf)
 nimblewill
 Northern Bedstraw
 nutgrass
 oak
 oakleaf fleabane
 Old world diamond flower
 oldenlandia
 oldfield cinquefoil
 Orange hawkweed
 orchardgrass
 Oriental cocklebur
 Oxalis (∞yellow woodsorrel & creeping woodsorrel)
 Oxeye Daisy
 Pale Smartweed
 pampas grass
 parsley-piert
 Parsnip
 paspalum
 Pearlwort
 Pennsylvania smartweed
 Pennycress (Frenchweed)
 pennywort
 Peppergrass
 Pepperweed
 perennial mouse-ear chickweed
 perennial oxalis
 Perennial Pepperweed
 perennial purple cudweed
 perennial wild geranium
 Persian Speedwell
 persimmon
 pigweed
 Pineappleweed
 Pineywoods bedstraw
 plains coreopsis (tickseed)
 Plains tickseed
 plantain
 Platte Thistle
 plumeless thistle
 poison hemlock
 Poison Ivy
 Poison Oak
 Poison Sumac

Pokeweed	smooth cat's ear	trumpet creeper
Poorjoe	Smooth chaff-flower	Trumpet vine
poplar	Smooth Crabgrass	tufted knotweed
povertyweed	Smooth dock	tumble mustard
Prairie sunflower	smooth pigweed	Tumble pigweed
Prickly lettuce (compass plant)	Smutgrass (seedling)	vaseygrass
Prickly sida	sneezeweed	velvetleaf
primrose	Snow Speedwell	Venice mallow
Prostrate knotweed	Snowberry	veronica
Prostrate pigweed	Soliva	vetch
prostrate spurge	Sorrel	vine maple
Prostrate Verbain	sour dock	violet
prostrate vervain	southern wild rose	Violet Woodsorrel
puncture vine	sowthistle	virginia buttonweed
Purple Amaranth	Spanish needles	Virginia creeper
Purple Aster	spatterdock	Virginia Pepperweed (peppergrass)
Purple cudweed	speedwell (veronica)	wandering cudweed
purple deadnettle	Spiny amaranth	Water pennywort
purple nutsedge	Spiny cocklebur	Wavyleaf bullthistle
purslane	Spiny sowthistle	Wavyleaf Thistle
Purslane Speedwell	Spotted Catsear (false dandelion)	Western clematis
quackgrass	spotted knapweed	Western Ragweed
quaking aspen	spotted spurge	Western salsify
Rabbit Foot Clover	sprangletop	Western Yarrow
ragweed	sprawling horseweed	White Clover (∞Dutch clover, honeysuckle clover, white trefoil, & purplewort)
Raspberry	Spurge	White Heath Aster
red alder	Spurweed	White mustard
red clover	St. Augustine grass	White Prairie Aster
Red Morning glory	st. johnswort	White Sweet Clover
Red sorrel (∞sheep sorrel)	Star of Bethlehem	Whitestem Filaree
redroot	Sticky Chickweed	whitetop
Redroot Pigweed	Stinging (burning) nettle	Wild aster
Redstem filaree	stinkweed	wild barley
Redweed	stitchwort	Wild Blackberry
Rough cinquefoil	Strawberry Clover	Wild buckwheat
Rough fleabane	Sumac	wild carrot
roundleafed marigold	sunflower	Wild cherry
rush	swamp smartweed	wild four-o'clock
Russian pigweed	Sweet Clover	Wild garlic
Russian thistle	sweet gum	Wild geranium
Sage	swinecross	wild grape
Sagebrush	tall fescue	Wild lettuce
salmonberry	Tall Morning glory	Wild marigold
saltcedar	Tall nettle	wild morningglory
sandspur	tall thistle	Wild mustard (yellow rocket)
sassafras	Tall vervain	wild oats
Scarlet pimpernel	tan oak	Wild onion
scotch broom	tansy mustard	Wild parsnip
Scotch thistle	tansy ragwort	Wild plum
scouler's willow	Tanweed	Wild radish
Sheep sorrel	tarweed	Wild rape
Shepherd's purse	teaweed	wild rose (multiflora)
shiny cudweed	Texas panicum	Wild strawberry
showy evening primrose	thimbleberry	Wild sweet potato
sibara	Thistle	Wild vetch
Slender Amaranth	three flower beggarweed	Wild Violet
Slender plantain	Thymeleaf Speedwell	willow
Slender Speedwell	tick trefoil	winter speedwell
slender-flower thistle	Timothy	winter vetch
smallflower buttercup	toadflax	witchgrass
Smallflower galinsoga	torpedograss	witchweed
smartweed	trailing blackberry	Wood Nettle
Smooth Bedstraw	trailing crownvetch	
smooth bromegrass	tree tobacco	

Woodsorrel	yarrow	Yellow Sweet Clover
Woolly croton	Yellow Foxtail	Yellow Thistle (horrible)
Woolly morning glory	Yellow Hawkweed	Yellow Woodsorrel (Oxalis)
Woolly plantain	yellow nutgrass	Yellow Yarrow
woolly vetch	Yellow Nutsedge	Yellowflower pepperweed
woollyleaf bursage	yellow oxalis	yellowspine thistle
Wormseed	Yellow rocket	zoysia
Wormseed Mustard	yellow starthistle	

∞annual or perennial

***Does not kill all seeds, woody and semi-woody plants, and propagules in the soil, such as tubers and rhizomes.