

**Chemsico jet stream  
wasp & hornet killer**  
formula u

**kills wasps and hornets on contact  
jet stream kills from 20 foot distance**

**DIRECTIONS FOR USE**

It is a violation of Federal Law to use this product in a manner inconsistent with its labeling.

**FOR OUTDOOR USE ONLY.** Shake well before using. Hold can upright. Aim spray opening away from face. Apply as a contact spray. Spray directly on insects. Avoid spraying plants or turf except to spray infested areas.

**TO KILL WASPS, HORNETS, YELLOW JACKETS, BEES.** Apply in evening when insects are at rest. Spray directly into hiding and breeding places, particularly under eaves. Aim spray at nest openings in trees, bushes, under eaves, chimneys, cracks and crevices to saturate in and around the nest openings contacting as many insects as possible. Repeat as necessary.

**TO KILL ANTS.** Spray directly on insects and around window frames, doors, ant trails and hills. Repeat as necessary.

**TO KILL EARWIGS, SOWBUGS, CRICKETS, BEETLES, SILVERFISH, CENTIPEDES AND MILLIPEDES:** Apply as a contact spray. Repeat as necessary.

**TO KILL TENT CATERPILLARS:** Application should be made when caterpillars are young and tents are first noticed. For best results apply in the late afternoon or evening when caterpillars have returned to their tents. Aim spray directly at tents and totally saturate on all sides. Repeat as necessary.

**PRECAUTIONARY STATEMENTS**

**HAZARDS TO HUMANS AND DOMESTIC ANIMALS**

**CAUTION.** Harmful if swallowed or absorbed through skin. Avoid breathing vapors or spray mist. Avoid contact with skin and eyes. In case of contact, immediately flush eyes or skin with plenty of water. Obtain medical attention if irritation persists. Do not apply directly to food. In commercial food handling facilities cover or remove any food and food processing equipment during application. Do not apply while food processing is underway. After space spraying in meat packing plants, bakeries and other food processing plants wash all equipment, benches, shelving and so on where exposed food will be handled with potable water. In the home all food processing surfaces and utensils should be covered during treatment or thoroughly washed before use. Remove pets, birds and cover fish aquariums before spraying.

**ENVIRONMENTAL HAZARDS**

**DO NOT APPLY DIRECTLY TO WATER.** Do not contaminate water by cleaning of equipment or disposal of wastes. When used on ships, do not wash or flush freshly sprayed surfaces into adjacent waters.

**PHYSICAL AND CHEMICAL HAZARDS**

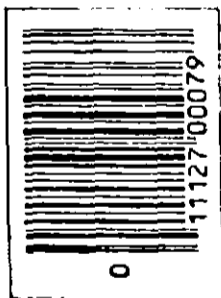
Contents under pressure. Do not puncture. Do not use near heat or open flame. Exposure to temperatures above 130°F may cause bursting.

**STORAGE AND DISPOSAL**

Do not store near heat or open flame. Do not reuse empty container. Wrap container and put in trash collection. Never throw container into fire or incinerator.

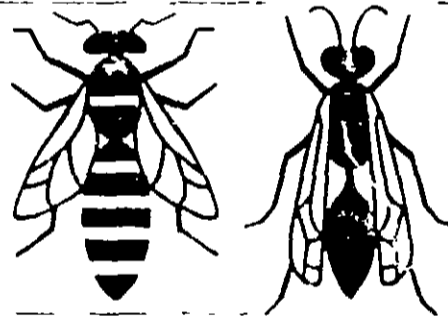


8494 Chapin Industrial Drive  
St. Louis, Missouri 63144  
EPA Reg No 9688-49  
EPA Est 9688-MO-1



**jet stream  
wasp &  
hornet  
killer**  
Kills on contact  
from 20 ft. away

formula u



**ACTIVE INGREDIENTS**

Resmethrin (15-(phenyl ethyl)-3-turanyl)  
methyl 2,2-dimethyl-3-(2-methyl-1-propenyl)  
cyclopropanecarboxylate) 0.250% W/W  
Related compounds 0.034%

**INERT INGREDIENTS**

99.716%

**CAUTION: KEEP OUT OF REACH OF CHILDREN**

See back of container for additional  
precautionary statements and directions

**NET WEIGHT 14.5 OZ.**