

3

GC#1 is an industrial cleaner which disinfects as it cleans. It is especially designed for schools, institutions, and industry. A single application removes dirt and grime, disinfects, and is virucidal. When used as directed, the hard surface disinfecting action of GC#1 will reduce the hazard of cross-infection.

GC#1 is an extremely effective one-step sanitizer. It cleans and sanitizes in waters up to 1000 ppm hardness. This hard water tolerance is in excess of most potable waters and will insure complete sanitizing action when used as directed.

When used as directed, GC#1 will deodorize toilet areas, behind and under sinks and counters, garbage cans and garbage storage areas, and other places where bacterial growth can cause mal odors.

### WARNING

Keep out of reach of children. Causes eye and skin irritation. Do not get in eyes, on skin, or on clothing. Harmful if swallowed. Avoid contamination of food.

#### STORAGE AND DISPOSAL

- DO NOT CONTAMINATE WATER, FOOD, OR FEED BY STORAGE OR DISPOSAL
- OPEN DUMPING IS PROHIBITED
- DO NOT REUSE EMPTY CONTAINER

#### PESTICIDE DISPOSAL

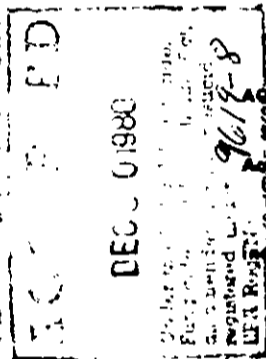
Pesticide, or rinsate that cannot be used or chemically reprocessed should be disposed of in a landfill approved for pesticides or buried in a safe place away from water supplies.

#### CONTAINER DISPOSAL

Triple rinse (or equivalent) and dispose in an incinerator or landfill approved for pesticide containers, or bury in a safe place.

#### GENERAL

Consult federal, state or local disposal authorities for approved alternate procedures such as limited open burning.



## GC#1

Cleaner—Disinfectant—Deodorizer—Fungicide—Virucide\*  
for Institutional Use

<b>AGAC Phenol Coefficients</b>	
Staph. aureus (ATCC No. 6538)	50.0
Salmonella typhosa (ATCC No. 6539)	20.0
<b>Active Ingredients</b>	
Didecyl dimethyl ammonium chloride	2.5%
Tetrasodium ethylenediamine tetraacetate	1.9%
Sodium carbonate	1.5%
<b>Inert Ingredients</b>	94.0%
	100.0%

### KEEP OUT OF REACH OF CHILDREN

### WARNING

Causes eye and skin irritation. Avoid contamination of food. Harmful if swallowed. Avoid getting product in the eyes. In case of contact, flush copiously with water and seek medical attention. Avoid getting product on the skin. In case of contact, flush copiously with water immediately to avoid possible skin irritation.

#### STATEMENT OF PRACTICAL TREATMENT

In case of contact immediately flush eyes or skin with plenty of water for at least 15 minutes. For eyes, call a physician. Remove and wash contaminated clothing before reuse.

If swallowed, drink promptly a large quantity of milk, raw egg whites, gelatin solution; or if these are not available, drink large quantities of water. Avoid alcohol. Call a physician immediately.

SEE LEFT PANEL FOR ADDITIONAL PRECAUTIONARY STATEMENTS

EPA Registration No.	9619-8
EPA Establishment No.	9619-MA-1
Net Contents	

82 Manufactured By  
**SYNTHETIC LABS, INC.**  
 Victory Lane  
 Dracut, Massachusetts 01826

If is a violat  
sistant wi

Add two out  
Apply GC#1  
bed frames

At two ounce  
aureus, Sati  
digitate, the  
three organ  
cidal perfo  
Fungicidal

\* At two ounce  
(a member  
(representa  
by the stra  
on Inanin a

Note, this o

For sanitiz

Use GC#1  
faces. When  
contact stu

BEST DOCUMENT AVAILABLE