



LAUNDRY: For front loading washer add $\frac{1}{2}$ cup Easy Monday to wash water. For top loading washer add 1 cup. If clothes are in machine, dilute bleach in 1 quart water before adding. To make clothes and linens soft and wrinkle resistant, add Easy Monday Fabric Softener to rinse water.



BABY CLOTHES: Removes stains, deodorizes, sanitizes. Follow same directions as for laundry. Rinse thoroughly. To make baby clothes soft and non-scratchy, add Easy Monday Fabric Softener to rinse water.



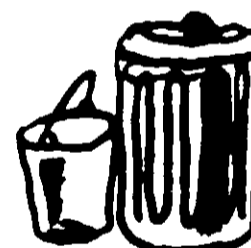
SICK ROOM EQUIPMENT: To disinfect, deodorize, and remove stains. Mix 3 tablespoons Easy Monday to a quart of water. Immerse or keep article wet in solution for 5 minutes. Rinse well.



TABLE LINENS: To remove mildew, stains, and scorch. First, wash out any starch. Mix 3 ounces of Easy Monday to each quart of lukewarm water. Add 1 teaspoon of baking soda. Mix well. Immerse article completely. Let stand 15 minutes or until stain is gone. Rinse out thoroughly. For the new fabrics: nylon, dacron, orlon, dynel, or rayon, follow the above directions but add ONLY 2 ounces of Easy Monday to a GALLON of water. Let stand only 15 minutes and rinse thoroughly.



TOILET BOWLS: To remove stains and odors. Pour $\frac{1}{2}$ cup Easy Monday into bowl; swish solution over inside surface. Let stand 10 minutes or overnight. To help remove rust stains add 2 tablespoons of vinegar to solution.

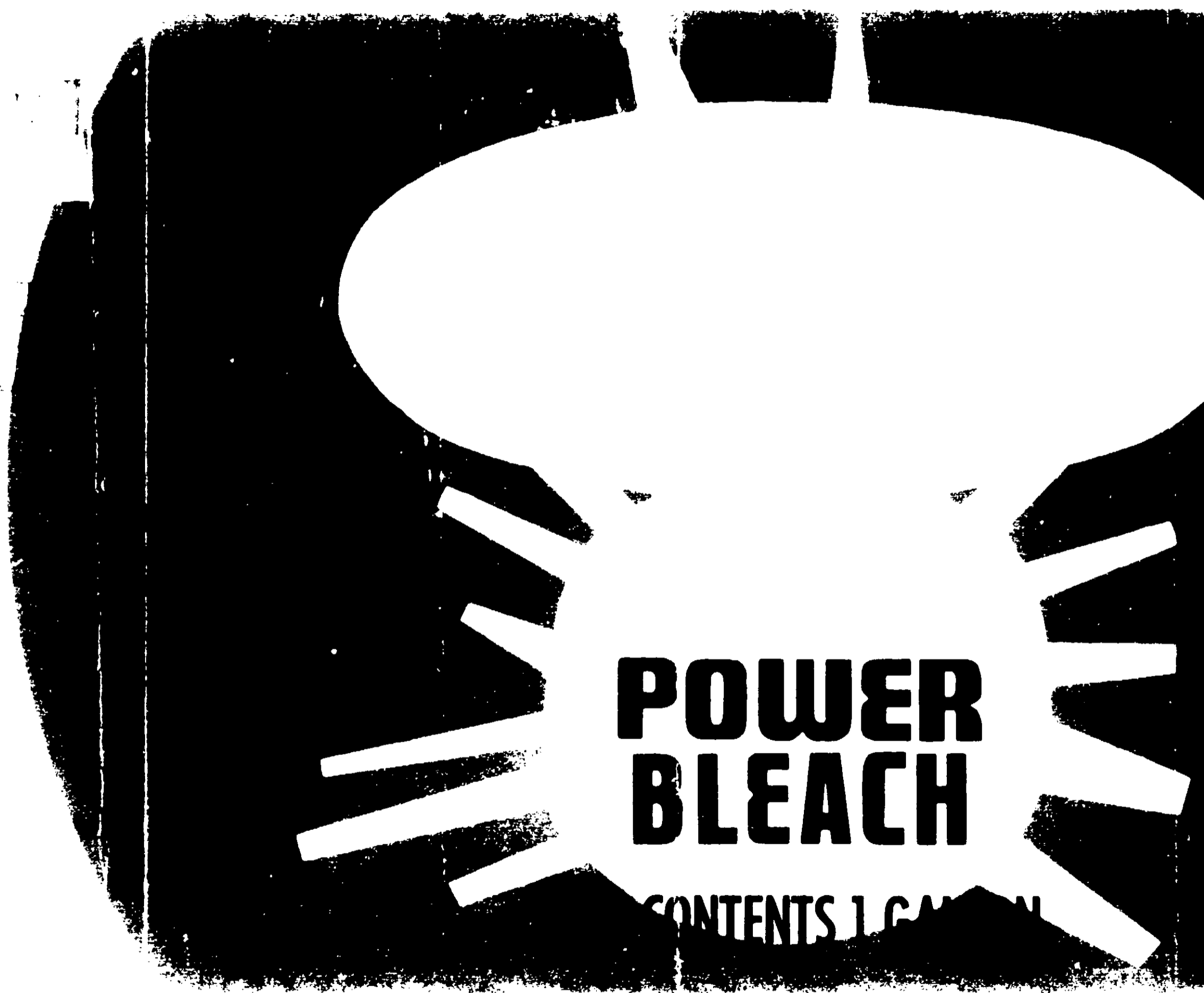


TRASH CAN: Destroys odors. Wash out can with 2 gallons of water containing a cupful of Easy Monday. Rinse out with hose.

NET CONTENTS ONE GALLON FLUID

**THE BLUE MAGIC COMPANY OF OHIO, INC.
PIQUA, OHIO 45356**

9612-1
35



**POWER
BLEACH**

CONTENTS 1 GALLON

**NEW FIRE RESISTANT
CRYSTAL AQUA
CONCENTRATED POOL CHLORINE**

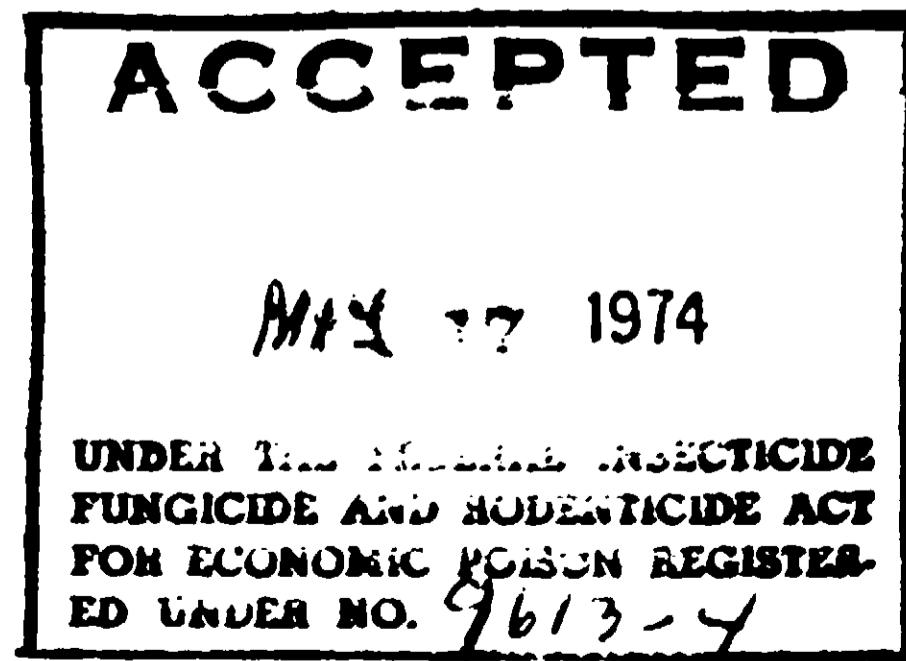
- FEATURES A DRY CHLORINE THAT DISSOLVES IMMEDIATELY.
- A MOST EFFECTIVE GERMICIDE AND ALGACIDE.
- WILL NOT CAUSE CLOUDINESS IN WATER.
- WILL NOT ADD SCALE FORMING MINERALS IN THE WATER.
- WILL MAINTAIN YOUR POOL CRYSTAL CLEAR.
- FLAME-RESISTANT

The control of pH is greatly simplified using Crystal Aqua concentrated Pool Chlorine. In fact, you will require from 1/4 to 1/2 times the amount of acid usually applied. Crystal Aqua Concentrated Pool Chlorine provides a more stable form of chlorine for easier maintenance of an effective chlorine residual in pool water for disinfecting action. It requires less storage space and maintains constant strength regardless of storage time. It is economical to use in that, after the pool is stabilized, you will need to apply Crystal Aqua concentrated Pool Chlorine less often.

INSTRUCTIONS

When starting up a new pool, superchlorinate to satisfy chlorine demand and to establish a chlorine residual of 1.0 ppm to 1.5 ppm available chlorine. To accomplish this, add 2 oz. Crystal Aqua concentrated Pool Chlorine per 1,000 gallons of pool water. The next morning, add Crystal Aqua cyanuric acid at the rate of 4 oz. per 1,000 gallons to stabilize the pool. Crystal Aqua concentrated Pool Chlorine should be added daily or as needed at the rate of 1/4 to 1/2 oz. per 1,000 gallons of pool water to maintain a chlorine residual at all times of 1.0 ppm to 1.5 ppm as determined by a suitable test kit. The pH should be maintained between 7.2 and 7.6.

EPA REG. NO. 9613-4



CRYSTAL-AQUA



CONCENTRATED GRANULAR CHLORINE

FIRE RESISTANT

ACTIVE INGREDIENT:
SODIUM DICHLORO-S-TRIAZINE TRIONE DIHYDRATE 100%
AVAILABLE CHLORINE 56%



Repackaged by:
BISON LABORATORIES, INC. BUFFALO, N. Y. 14211

NET WT. 5 LBS.

DANGER
KEEP OUT OF REACH OF CHILDREN
SEE FIRST AID AND PRECAUTIONS ON SIDE PANEL

A shock treatment should be made every week during hot weather or after heavy rains. Less frequent shock treatments may be made during cool weather. For the shock treatment, add 2 oz. of Crystal Aqua Concentrated Pool Chlorine per 1,000 gallons of pool water. Swimmers should not be permitted in the pool after the shock treatment until the chlorine residual has reached the 1.0 ppm to 1.5 ppm range.

Keep in mind that a slight flexibility must be maintained in the event of heavy accumulations of dust and dirt caused by storms or super heavy bathing loads which require additional dosages as needed to maintain the chlorine residual between 1.0 ppm and 1.5 ppm.

DANGER: **KEEP OUT OF REACH OF CHILDREN**

Corrosive causes eye damage. Do not get in eyes or on skin. Do not breathe dust. May cause skin, nose and throat irritation. Wear safety goggles, dust respirator and protective clothing when handling. May be fatal if swallowed. May cause burns to broken skin.

Strong oxidizing agent. Moisture contamination may liberate irritating and hazardous chlorine-containing gases. Decomposes at 350-475°F with liberation of harmful gases. In case of decomposition, if possible isolate container in open air or well ventilated area. Flood with large volume of water if necessary. Mix only with water. Do not mix with other pool chemicals. Use only dry clean measuring utensils. Store in a cool dry place. Keep closed when not being used. Do not reuse container. Rinse empty container thoroughly with water and discard.

FIRST AID:

In case of personal contact remove excess material and flush skin or eyes with cold water for at least 15 minutes. For eyes get medical attention. Clean contaminated clothing before reuse.

If swallowed, feed gruel or cooked cereal followed by olive oil or cooking oil. Call a Physician immediately.

This product is toxic to fish. Treated pool effluent water should not be discharged where it will drain into lakes, streams, ponds, or public water. Do not contaminate water by cleaning of equipment or disposal of wastes.

Apply this product only as specified on this label.