

PM 12 9591-57
12-26-89

**PRECAUTIONARY STATEMENTS
HAZARDS TO HUMANS & DOMESTIC
ANIMALS**

CAUTION
Harmful if swallowed. Avoid contact with eyes, skin and clothing. Avoid breathing vapors or spray mist. Keep away from food, feedstuffs and domestic water supplies. Wash thoroughly after handling.

**STATEMENT OF PRACTICAL
TREATMENT**

IF SWALLOWED do not induce vomiting. Call a physician immediately. Note To Physician: Contains Petroleum Distillate. If Gastric Lavage is deemed necessary, undertake only after proper placement of a cuffed endotracheal tube. Active ingredients contain a cholinesterase inhibitor. Treat symptomatically. Atropine is an antidote.
IF ON SKIN wash immediately with soap and water. If irritation develops, get medical attention.
IF IN EYES flush eyes for at least 15 minutes with water. Call a physician immediately.
Do not allow children or pets to contact treated surfaces until spray has dried.
Do not spray air in rooms or use on plants. Apply as a surface spray only as specified on this label.
Do not allow spray to contact food, feedstuffs or water supplies. Thoroughly wash dishes and food handling utensils if contaminated with this product.

ENVIRONMENTAL HAZARDS
This product is toxic to fish, birds and other wildlife. Do not apply directly to lakes, streams or ponds. Do not contaminate water by cleaning of equipment or disposal of wastes. Apply this product only as specified on this label.

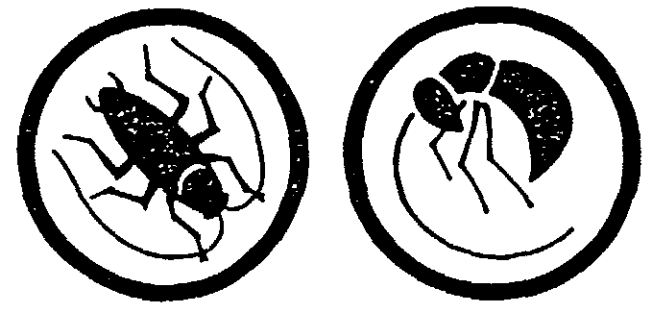
PHYSICAL OR CHEMICAL HAZARDS
COMBUSTIBLE. Do not smoke while using. Do not use, pour, spill or store near heat or open flame.

DIRECTIONS FOR USE
It is a violation of Federal Law to use this product in a manner inconsistent with its labeling.

STORAGE AND DISPOSAL
Do not contaminate water, food and feed by storage or disposal. Open dumping is prohibited.
Pesticide, spray mixture or rinse water that cannot be used according to label instructions must be disposed of according to applicable Federal, state or local procedures. Triple rinse (or equivalent). Then offer for recycling or reconditioning. Or, if not possible, dispose of in a sanitary landfill, or by other approved state and local procedures.
Consult Federal, state or local disposal authorities for approved alternate procedures.

MANUFACTURED BY
NATIONAL
CHEMICAL PRODUCTS, INC.
P.O. BOX 3887
HAMILTON, OHIO 45013
EPA REGISTRATION NO 5601-67
EPA ESTABLISHMENT NO 5601-0M-1

PRO KILL



ROACH & ANT SPRAY

PROVIDES FLUSHING ACTION & FAST KNOCKDOWN

Kills Cockroaches, Ants, Silverfish, Spiders, Crickets, Earwigs and Brown Dog Ticks.

Use In and Around Homes, Apartments, Garages, Similar Residential Structures, Institutions, Restaurants and Food Processing Plants.
Use Outdoors As An Aid in Reducing Annoyance from Flies and Mosquitoes Entering the Home.

ACTIVE INGREDIENTS:	
Pyrethrins	0.052%
*Piperonyl Butoxide, Technical	0.260%
**Chlorpyrifos (0,0-dietlyl 0-(3,3,5-trichloro-2-pyridyl) phosphorothioate)	0.500%
INERT INGREDIENTS	99.188%
	100.000%

*Equivalent to 0.208% (butylcarbityl) (6-propylpiperonyl) ether and 0.052% related compounds

CAUTION KEEP OUT OF REACH OF CHILDREN
SEE SIDE PANEL FOR ADDITIONAL PRECAUTIONARY STATEMENTS

Net Contents _____ Gallons

DIRECTION FOR HOUSEHOLD AND OUTDOOR USE IN NON-FOOD AREAS: Including garbage rooms, lavatories, floor drains (to sewers), entries and vestibules, offices, locker rooms, machine rooms, boiler rooms, garages, mop closets and storage (after canning or bottling). Apply to baseboard areas, around water pipes, surfaces behind and beneath sinks, lockers, tables, pellets and similar areas where insects hide or through which they may enter. Repeat treatment as required.

To control cockroaches, ants, earwigs, water bugs, silverfish, spiders and crickets apply in small amounts directly into cracks and crevices using equipment capable of delivering a pin stream of insecticide, in points between different elements of construction, between equipment and floors, openings leading to voids and hollow spaces in walls, equipment legs and bases, in conduits, motor housings, junction or switch boxes. Prior to application de-energize electrical equipment. After application allow time for oil to evaporate before starting motors or placing switches in "ON" position. Care should be taken to avoid depositing the product onto exposed surfaces or introducing the material into the air. Avoid contamination of food or food processing surfaces.

Brown Dog Ticks: Apply thoroughly as a spot treatment to infested areas such as pet beds and resting quarters, nearby cracks and crevices, along and behind baseboards, window and door frames and localized areas of floor and floor covering where these insects may be present. Fresh bedding should be placed in animal quarters following treatment. Do not spray pets with this product.

Flies and Mosquitoes: Use only on outdoor surfaces. Spray outside surfaces of windows and door frames and other areas where these pests may enter the home. Also spray dark corners and localized resting areas, such as under eaves, porches, partitions and in garages where these insects may congregate. Flies and mosquitoes coming to rest on treated surfaces will be killed. Repeat treatment when effectiveness diminishes.

APPLICATIONS OF THIS PRODUCT IN THE FOOD AREAS OF FOOD HANDLING ESTABLISHMENTS OTHER THAN AS A CRACK AND CREVICE TREATMENT ARE NOT PERMITTED.

SERVING AREAS: Facilities where foods are served such as dining rooms, but excluding areas where foods may be prepared or held, apply as a spot treatment to selective surfaces, such as baseboards, under elements of construction and into cracks and crevices. Avoid treating surfaces likely to be contacted by food. (Do not apply when facility is in operation or foods are exposed.)

Includes areas for receiving, storage, packing (canning, bottling, wrapping, boxing), preparing, edible waste storage and enclosed processing systems (mills, dairies, edible oils, syrups) and serving areas (when food is exposed and facility is in operation).

WARRANTY STATEMENT

Our recommendation for use of this product are based upon tests believed to be reliable. The use of this product being beyond the control of the manufacturer, no guarantee, expressed or implied, is made as to the effects of such or the directions or established safe practice. The buyer must assume all responsibility, including injury or damage, resulting from its abuse or such, or its combination with other materials.

Not Reviewed. Registrant claims to be in accordance with Reregistration of Pesticide Product Guidance for Phase 2 Response, Page 2.12, Active to Inert Change in Status.