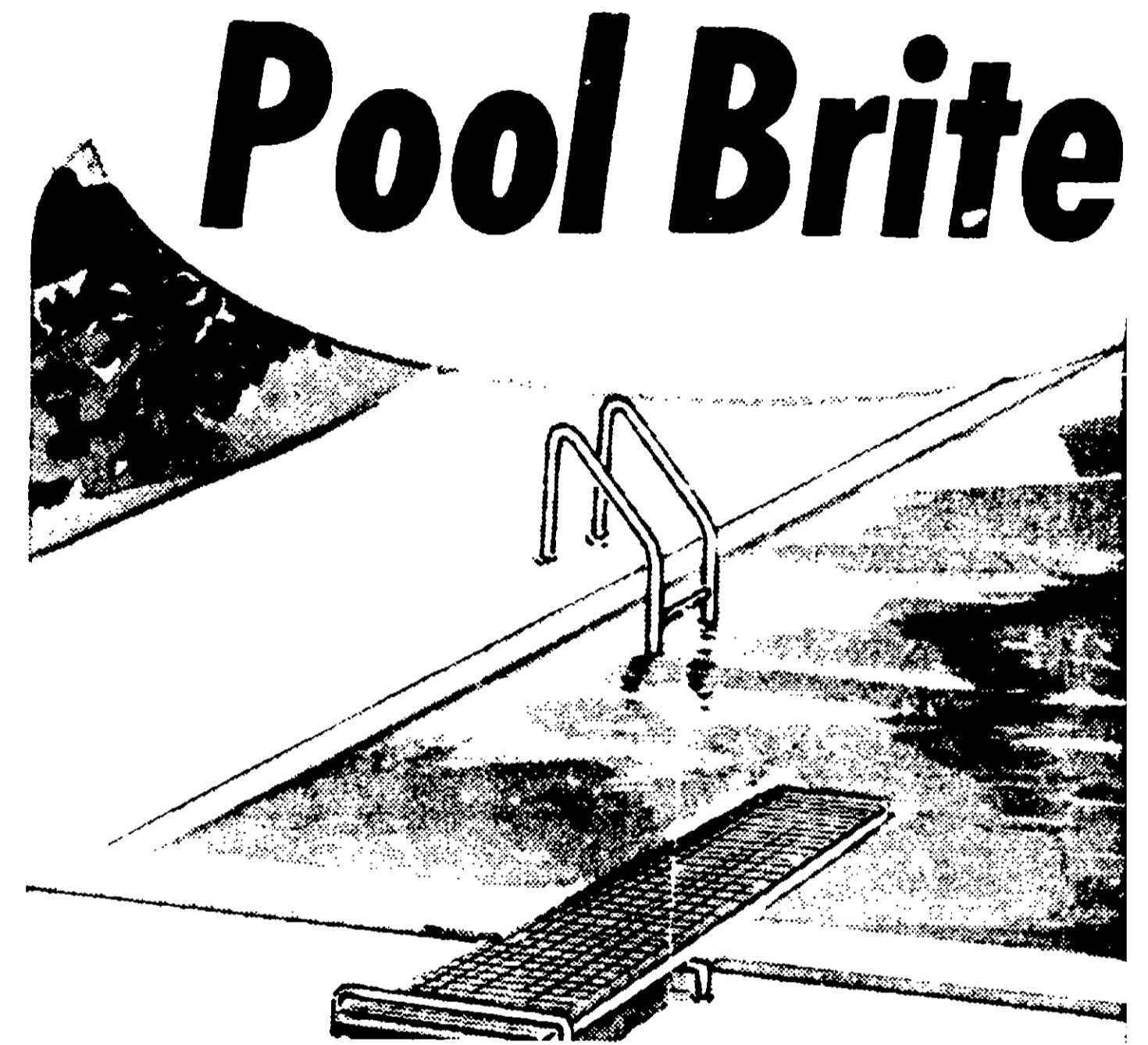


KEEP YOUR POOL CLEAR & SANITARY

DIRECTIONS

1. Adjust pool water pH to 7.2 to 7.6 as necessary with pH Increaser or Pool Acid
2. Proper conditioning of pool water with POOL CONDITIONER & STABILIZER is necessary to ensure maximum effectiveness of pool chlorine. To freshly filled or previously unconditioned and stabilized pool water add 1½ lbs. of CONDITIONER & STABILIZER for each 5000 gallons of pool water capacity.
3. To a pH adjusted and preconditioned pool as recommended in steps 1 & 2, add 2 oz. Chlorine Granular 70 for every 4000 gals of fresh water to super chlorinate and satisfy the demand of the fresh water. Test water after 1 to 4 hours with a chlorine test kit. If there is no chlorine residual recheck pH with test kit and readjust as in step 1. Repeat above chlorine dosage until a reading of 0.8 PPM or more residual is found with test kit. Thereafter, periodically add 2 oz. Chlorine Granular 70 for each 8000 gals. of water daily or as needed to maintain 0.8 to 1.5 PPM chlorine residual at all times. ADD CHLORINE GRANULAR 70 TO SKIMMER WHILE PUMP IS RUNNING. It will dissolve leaving no residue, contains no scalling minerals. Test water daily for pH as well as chlorine residual, as pH has a direct effect on chlorine action. One fluid oz. equals one oz. by weight. 2 oz. of Chlorine Granular 70 added to 8000 gals. of water will provide 1.1 PPM available chlorine.



CHLORINE GRA

ACTIVE INGREDIENT—Trichloro-s-Triazinetrione
INERT INGREDIENT—Sodium Carbonate

WARNING KEEP OUT OF REACH OF CHILDREN
SEE SIDE PANEL FOR

TARY

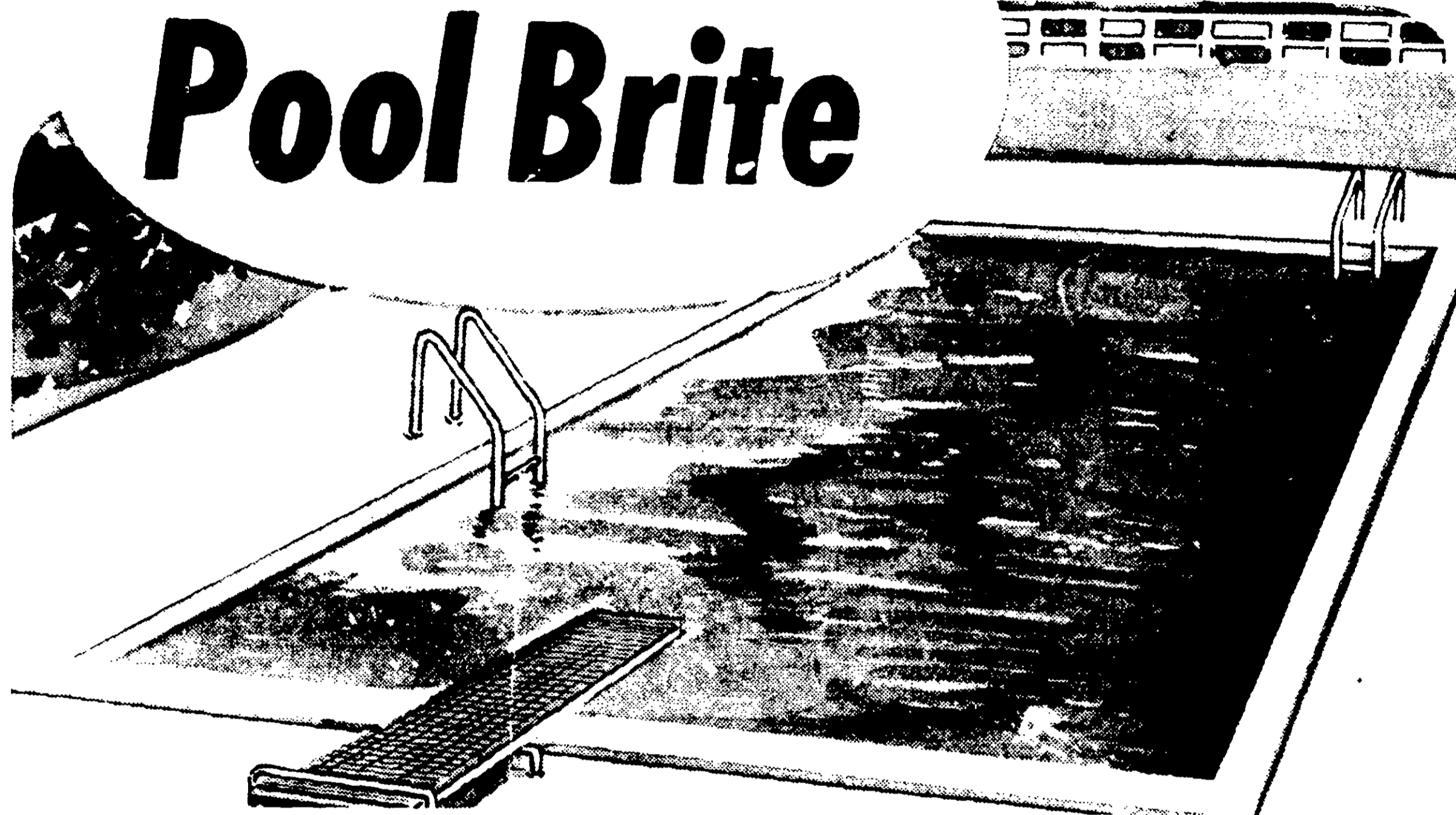
Increaser or Pool

ER & STABILIZER

To freshly filled
add 1½ lbs. of
of water capacity.

l in steps 1 & 2,
sh water to super
water after 1 to
idual recheck pH
e dosage until a
hereafter, periodi-
of water daily or
it all times. ADD
UNNING. It will
st water daily for
n chlorine action.
ranular 70 added
e.

Pool Brite



NET WT.

5 10 20 LBS.

U.S.D.

W

Keep out of reach of
cause burns or dama
terial. Avoid breathin
may cause fire. Mois
tating and hazardous
from open flame. Kee
place when not in
when empty.

EXTERNAL ANTIDOTE
clothing. In case
eyes with cold wa
get medical atten

INTERNAL ANTIDOTE
by olive oil or co
CALL A PHYSICIA

CHLORINE GRANULAR 70

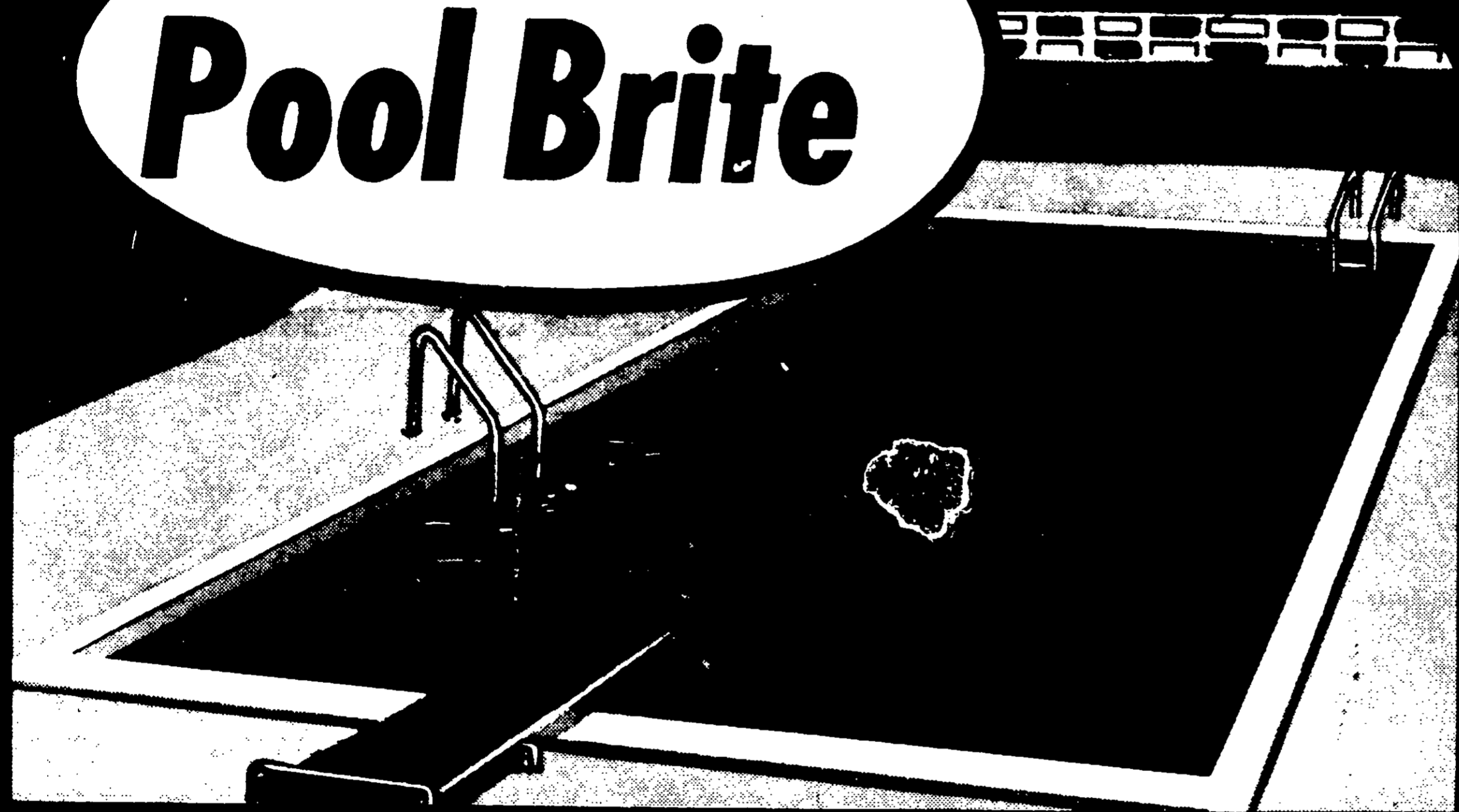
ACTIVE INGREDIENT—Trichloro-s-Triazinetrione 70%
INERT INGREDIENT—Sodium Carbonate 30%
100%

**KEEP OUT OF REACH OF CHILDREN
USE WITH CAUTION**

Ortex

560 Ferry S

Pool Brite



CHLORINE GRANULAR 70

ACTIVE INGREDIENT—Trichloro-s-Triazinetrione	70%
INERT INGREDIENT—Sodium Carbonate	30%
	100%

U.S.D

W

Keep out of reach of children to avoid
cause burns or damage to material. Avoid breathing dust. May cause fire. Moisture sensitive and hazardous when mixed with water. Keep container tightly closed when not in use. Do not use when empty.

EXTERNAL ANTIDOTE
Remove contaminated clothing. In case of contact with eyes with cold water, get medical attention.

INTERNAL ANTIDOTE
by olive oil or cod liver oil.
CALL A PHYSICIAN

Ortex

560 Ferry St

U.S.D.A. Reg. No. 9556-9

WARNING

Keep out of reach of children. Harmful if swallowed. May cause burns or damage to the eyes. Strong oxidizing material. Avoid breathing dust. Contact with organic matter may cause fire. Moisture contamination may liberate irritating and hazardous chlorine-containing gases. Keep away from open flame. Keep container closed and in a cool, dry place when not in use. Do not reuse container. Destroy when empty.

POISON

EXTERNAL ANTIDOTE — Avoid contact with skin, eyes or clothing. In case of contact, immediately flush skin or eyes with cold water for at least 15 minutes. For eyes get medical attention.

INTERNAL ANTIDOTE — Feed bread soaked in milk followed by olive oil or cooking oil.

CALL A PHYSICIAN.

Manufactured for

Ortex Products Inc.

560 Ferry St., Newark, N. J. 07105

KEEP YOUR POOL CLEAR & SANITARY

DIRECTIONS

1. Adjust pool water pH to 7.2 to 7.6 as necessary with pH Increaser or pH Reducer.
2. Proper conditioning of pool water with **CONDITIONER & STABILIZER** is necessary to ensure maximum effectiveness of pool chlorine. To freshly filled or previously unconditioned and stabilized pool water, add $1\frac{1}{2}$ lb. of **CONDITIONER & STABILIZER** for each 5000 gallons of pool water to establish a 30 to 40 P.P.M. range of cyanuric acid.
3. To a pH adjusted and preconditioned pool as recommended in steps 1 & 2, add 2 oz. Chlorine Granular 85 for every 4000 gals of water to super chlorinate and satisfy the demand of the fresh water. After 1 to 4 hours, test water with a test kit for chlorine. If there is no chlorine residual, recheck pH and readjust as in step 1. Repeat above chlorine dosage until a reading of 0.6 p.p.m. or more is found. Thereafter periodically add 2 oz. Chlorine Granular every other day for each 8000 gal. or, as needed to maintain 0.8 to 1.5 p.p.m. residual chlorine at all times. Add Chlorine Granular 85 by broadcasting at the deep end of pool by main drain. It will leave no residue, contains no scale forming minerals. Test water at least daily for pH as well as chlorine residual as it has, a direct effect on chlorine action. 2 oz. of Chlorine Granular 85 added to 8000 gals. of pool water every other day will provide 1.5 p.p.m. available chlorine. 1 liquid oz. equals 1 oz. by weight. (Approx.) NOTE - When adding to a vinyl lined pool, brush area where the granules have settled to prevent possible bleaching of liner, or, dissolve granules in a separate 5 gal. container and pour into pool water.