

RY

Increaser or

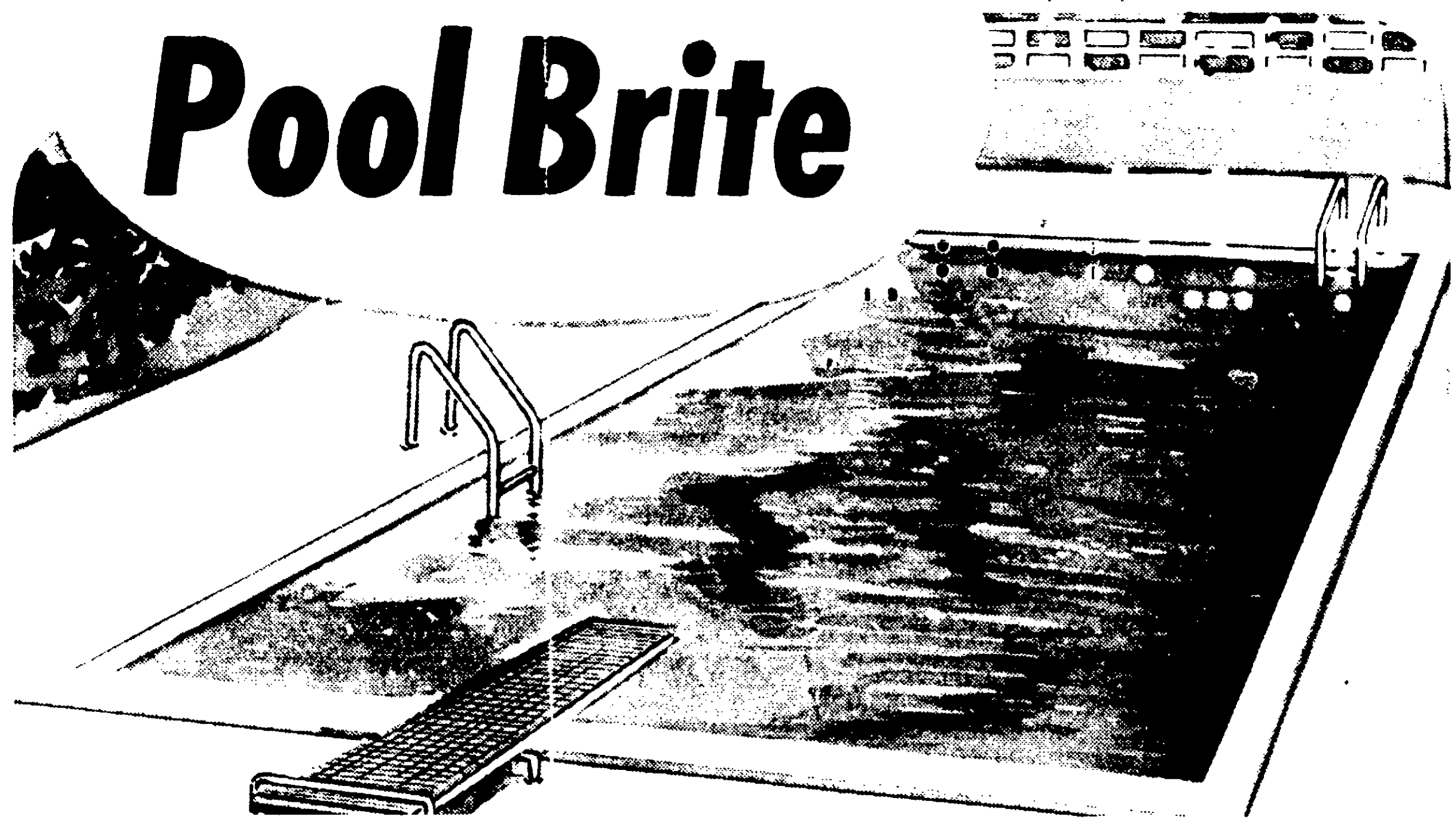
STABILIZER

To freshly  
add 1 1/2 lbs.  
water capacity.

steps 1 & 2,  
water to super  
Test water  
chlorine residual  
move chlorine  
found with  
for each 8000  
ppm residual  
at the deep  
will dissolve  
Test water  
direct effect  
0 gallons of

**NET WT.  
5 10 20 LBS.**

# Pool Brite



## STABILIZED CHLORINE GRANULAR

Active Ingredient — Sodium Dichloro-S-Triazinetrione ..... 100%  
Inert Ingredient ..... None

**KEEP OUT OF REACH OF CHILDREN.**  
**SEE SIDE PANEL FOR ADDITIONAL CAUTIONS.**

**U.S.D.A.**

**WA**

Harmful if swallowed. Str  
tact with skin, eyes or clo  
flush skin or eyes with c  
For eyes get medical atten  
with organic matter may  
may liberate irritating a  
gases. Keep away from  
and in a cool dry place  
tainer. Destroy when emp

**P**

External antidote — Imme  
water

Internal antidote — Feed  
clive  
Call

Mar

**Ortex**

560 Ferry St.

RY

Increaser or

& STABILIZER

To freshly  
add 1 1/2 lbs.  
water capacity.

steps 1 & 2,

water to super

or. Test water

chlorine residual

above chlorine

is found with

or each 8000

ppm residual

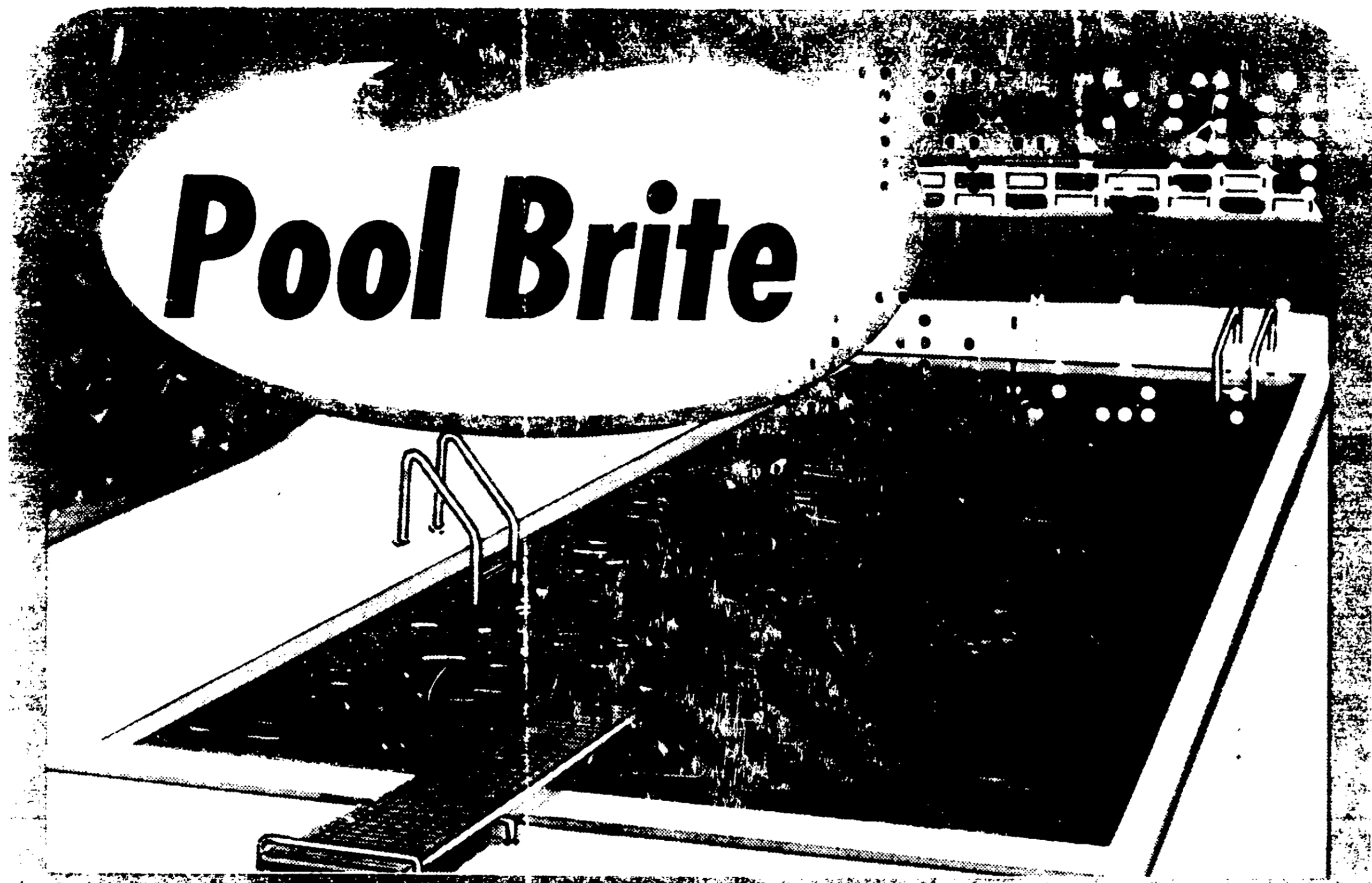
at the deep

will dissolve

s. Test water

direct effect

10 gallons of



# Pool Brite

## STABILIZED CHLORINE GRANULAR

Active Ingredient — Sodium Dichloro-S-Triazinetrione ..... 100%  
Inert Ingredient ..... None

U.S.D.A.

W

Harmful if swallowed. St  
tact with skin, eyes or clot  
flush skin or eyes with c  
For eyes get medical atten  
with organic matter may  
may liberate irritating c  
gases. Keep away from  
and in a cool dry place  
tainer. Destroy when emp

P

External antidote — Imm  
water

Internal antidote — Feed  
olive  
Call

Mar

Ortex

560 Ferry St.

**U.S.D.A. Reg. No. 9556-6**

## **WARNING**

Harmful if swallowed. Strong oxidizing material. Avoid contact with skin, eyes or clothing. In case of contact, immediately flush skin or eyes with cold water for at least 15 minutes. For eyes get medical attention. Avoid breathing dust. Contact with organic matter may cause fire. Moisture contamination may liberate irritating and hazardous chlorine-containing gases. Keep away from open flame. Keep container closed and in a cool dry place when not in use. Do not reuse container. Destroy when empty.

## **POISON**

**External antidote** — Immediately flush with plenty of cold water.

**Internal antidote** — Feed bread soaked in milk followed by olive oil or cooking oil.  
Call a physician.

Manufactured for

**Ortex Products Inc.**

**560 Ferry St., Newark, N. J. 07105**

## CHLORINE GRANULAR 56

- \* Dissolves immediately by broadcasting in pool.
- \* Most effective germicide and algaecide.
- \* Will not cause cloudiness in water.
- \* Will not add scale forming minerals in water.
- \* Will maintain pool crystal clear.
- \* Flame resistant.

The control of pH is greatly simplified using Chlorine Granular 56. In fact, you will require from  $\frac{1}{2}$  to  $\frac{1}{4}$  times the amount of acid normally applied. Chlorine Granular 56 provides a more stable form of chlorine for easier maintenance of an effective chlorine residual in pool water for disinfecting action. It requires less storage space and maintains constant strength regardless of storage time. It is economical to use in that, after pool is stabilized, you will need to apply Chlorine Granular 56, less often.

### DIRECTIONS

When starting a new pool, super-chlorinate to satisfy chlorine demand and to establish a chlorine residual of 1.0 to 1.5 ppm. To accomplish this, add 2 oz. Chlorine Granular 56 per 1,000 pool water. The next morning add Conditioner & Stabilizer at a rate of 4 oz per 1,000 gals to stabilize the pool water.

Chlorine Granular 56 should be added daily or as needed at a rate of  $\frac{1}{4}$  oz per 1,000 gals of water to maintain a chlorine residual of 1.0 to 1.5 ppm as determined by a suitable test. pH should be maintained between 7.2 & 7.6.

A shock treatment should be made every week during hot weather after heavy rains. Less frequent shock treatments may be made during cool weather. For shock treatment, add 2 oz Chlorine Granular 56 per 1,000 gals of water. Swimmers should not be permitted until the chlorine residual has reached the 1.0 to 1.5 ppm range. Slight flexibility must be maintained with heavy accumulation of sand and dirt caused by storms or super heavy bathing loads which require additional dosages to maintain 1.0 to 1.5 ppm chlorine.

**ACCEPTED**

9556-19

NOV 21 1971

ENTER THE FEDERAL INSECTICIDE  
FUNGICIDE AND RODENTICIDE ACT  
FOR ECONOMIC POLSON REGISTER-  
ED UNDER NO. 234-17 SUBJECT  
1. ATTACHED COMMENTS.